



Kitsap Regional Coordinating Council

* MATERIAL IN THIS PACKET

Chair
Mayor Patty Lent
City of Bremerton

Vice-Chair
Commissioner Josh Brown
Kitsap County

Commissioner Charlotte Garrido
Commissioner Robert Gelder
Kitsap County

Council Member Will Maupin
Council Member Dianne Robinson
Council Member Greg Wheeler *
City of Bremerton

Council Member Kim Brackett
Council Member Hilary Franz
Council Member Kirsten Hytopoulos*
City of Bainbridge Island

Mayor Lary Coppola
Council Member Carolyn Powers
Council Member Jim Colebank *
City of Port Orchard

Mayor Becky Erickson
Council Member Linda Berry-Maraist *
City of Poulsbo

Council Chair Leonard Forsman
Rob Purser*
*Suquamish Tribe****

Council Chair Jeremy Sullivan
Council Member Kelly Baze
*Port Gamble S'Klallam Tribe****

Commissioner Bill Mahan
Commissioner Roger Zabinski *
Port of Bremerton

Captain Pete Dawson
Tom Danaher, PAO *
*Naval Base Kitsap***

Mary McClure
*Executive Management
McClure Consulting LLC*

* *Alternate*
** *Ex Officio Member*
*** *Associate Member*

P.O. Box 1934
Kingston, WA 98346
360-377-4900 (voice)
360-297-7762 (fax)
www.KitsapRegionalCouncil.org

Executive Board Meeting Tuesday, September 27, 2011 Norm Dicks Government Center

AGENDA

Board Meeting:

1. Call to Order 8:00 a.m.
2. Citizen Comments (PLEASE KEEP COMMENT TO THREE MINUTES)
3. Consent Agenda: *Action* (5)
 - a. Approve Minutes of July 26, 2011 Meeting *
 - b. Approve 2011 KRCC Budget Amendment *
4. From the Executive Committee:
 - a. Draft 2012 Organizational Program (*for action: November 22 meeting*) * (30)
 - Work Program
 - Budget
 - Member Agency Dues
 - b. Boeing 737 Assembly Plant: WA Aerospace Partnership * (30)
5. Work Program Report
 - a. CDBG & Low Income Housing Coordinated Grant Programs: Recommendations for Funding: *Open Public Comment Period* * (5)
 - b. Transportation: Countywide Multi-Modal Transportation Plan * *Update* (10)
 - c. Growth Management Planning: Revisions to Countywide Planning Policies * *Update* (15)

See KRCC website for Proposed Revisions: www.kitsapregionalcouncil.org
[orange box *Planning* on right hand side of front page]
 - d. Local Integrating Organization: *Update* * (15)
6. Member Agency Comments
7. Citizens Comments (AS TIME PERMITS)
8. Adjourn 10:00 a.m.

Study Session:

10:15 – 12:00 p.m.

- Legislative Agenda for 2012: Topics of Interest * *Discussion* (45)
- T2040 Prioritization Process: Stephen Kiehl/Robin Mayhew, PSRC * *Update* (45)



Executive Board Meeting Materials





Kitsap Regional Coordinating Council

Chair
Mayor Patty Lent
City of Bremerton

Vice-Chair
Commissioner Josh Brown
Kitsap County

Commissioner Charlotte Garrido
Commissioner Robert Gelder
Kitsap County

Council Member Will Maupin
Council Member Dianne Robinson
Council Member Greg Wheeler *
City of Bremerton

Council Member Kim Brackett
Council Member Hilary Franz
Council Member Kirsten Hytopoulos *
City of Bainbridge Island

Mayor Lary Coppola
Council Member Carolyn Powers
Council Member Jim Colebank *
City of Port Orchard

Mayor Becky Erickson
Council Member Linda Berry-Maraist *
City of Poulsbo

Council Chair Leonard Forsman
Rob Purser *
*Suquamish Tribe****

Council Chairman Jeremy Sullivan
Council Member Kelly Baze *
*Port Gamble S'Klallam Tribe***

Commissioner Bill Mahan
Commissioner Roger Zabinski *
Port of Bremerton

Captain Pete Dawson
Tom Danaher, PAO *
*Naval Base Kitsap***

Mary McClure
*Executive Management
McClure Consulting LLC*

* *Alternate*
** *Ex Officio Member*
*** *Associate Member*

P.O. Box 1934
Kingston, WA 98346
360-377-4900 (voice)
360-297-7762 (fax)
www.KitsapRegionalCouncil.org

Executive Board Meeting

July 26, 2011

Draft Meeting Summary

- Call to Order:** Chair Patty Lent called the Kitsap Regional Coordinating Council's Executive Board to order at 8:11 a.m. (*Attendance noted at end*)
- Citizen Comments: Four.**
To hear comments in full, contact KRCC staff to request Board Meeting audio recordings.
 - Raelenea Rodriguez, North Kitsap Fishline Foodbank: Coordinated Entry Program**
 - Thanks to the Board for their support of today's CDBG & Low Income Housing Grant Programs agenda item regarding Coordinated Entry.
 - North Kitsap's homeless population has tripled in the past four years, and is growing in need as much as the rest of the County.
 - A Homeless Services Center will be vital to getting homeless people the services they need immediately and effectively.
 - North Kitsap Fishline would be very interested in being a satellite location to serve north- and central-Kitsap populations.
 - Manny Cruz, Kitsap Mental Health Services: Coordinated Entry Program**
 - I have served on the Consolidated Entry Advisory Group for last six months, designing a Coordinated Entry Program to fit the needs of Kitsap County.
 - Kitsap Mental Health has seen a dramatic increase in need over the past year.
 - Funding cuts have not helped the homeless, our clients, or our local partners.
 - Coordinated Entry will help homeless clients in crisis receive faster service and help agencies distribute services more fairly.
 - I ask the Board today to support the requested action for Coordinated Entry.
 - Broad support for Coordinated Entry Program from Kitsap's social service providers.
 - Jan Wold, Citizen: Population Distribution**
 - Population distribution is very important.
 - Kitsap's Urban Growth Areas are too big:
 - Actual growth in Kitsap is less than OFM mid-range projection, but the KRCC Population Distribution used a figure higher than the mid-range to guide UGA sizing.
 - Kitsap County is developing at incorrectly low density.
 - Oversized UGA's open an excessive amount of land to developers and are a financial burden on the taxpayer.
 - A population distribution more in line with actual growth over the last decade would facilitate correctly sized UGA's.
 - PSRC's VISION 2040 shows that Bremerton & Silverdale, with the most complete infrastructure, should have greater proportions of population but the 2030 Population Projection does not reflect this. The SEPA analysis states the opposite.

- Neither SEPA analysis, nor notice of it, was sent to citizens that testified during the CPP process, or to the KRCC mailing list. The SEPA process is not listed on CPP process chart.
- The SEPA document is not available on the Kitsap County website, but will shortly be final.
- The appeal date should be extended due to the lack of public notice and access to this document.

Beverly Kinkaid, Sound Grants: Coordinated Entry Program

- In the past, I have represented United Way of Kitsap on Continuum of Care Coalition (CoCC) and am currently a business member of the CoCC.
- I have previously coordinated the annual Project Connect event for homeless and those in risk of homelessness. In 2010, over 1,300 individuals came to this event seeking services and advice.
- My experiences proved to me that a Coordinated Entry system is absolutely necessary in Kitsap.
- I wholeheartedly support the concept but do not support a set-aside of \$350,000 of grant funds for implementation.
- I suggest that the KRCC approve a smaller set-aside, perhaps \$100-\$150,000, to begin a phased process, to preserve some of the funds for service provision.

3. Consent Agenda:

- Approve Minutes of May 24, 2011 Meeting
- Coordinated Grant Program: Appoint Grant Recommendation Committee Members.

Commissioner Garrido noted that comments she made on page 4 of (a) the May 24 Meeting summary have been missed. Specifically, she had commented that times change and that the Fully Contained Community concept could be re-visited in the future.

Mary McClure commented that the Continuum of Care Coalition (CoCC) has suggested that the vacant position to the 2012 Capital Grant Recommendation Committee, that would be recommended by CoCC, be left open.

Chair Lent noted that the vacant appointment for the Bremerton area to the 2012 Capital Grant Recommendation Committee would be approved by the Board at a later date, should a volunteer come forward.

Motion: (Gelder) and second (Brackett) to approve the Consent Agenda, with the inclusion of the revision to Commissioner Garrido's comments on page 4 of (a) Minutes of May 26, 2011. *Motion carried unanimously.*

4. From the Chair:

Chair Lent: Commissioner Garrido has been appointed to the Governor's Connecting Washington Task Force. The Task Force is charged with developing a financially sustainable 10 year funding strategy for the State's transportation system, and presenting it to the 2012 Legislature.

Commissioner Garrido: The first meeting was July 19, and an additional four full-day meetings will follow. The work of the Task Force will be fast-paced. During the first meeting, we were given basic information on the transportation system, and met other Task Force members. Information is on the Governor's website, and I will try to link it to the Kitsap County website.

The Task Force will develop a recommendation to the State Legislature for a fair funding package for all transportation modes. There are three representatives for Counties across the state, so I represent the interests of Counties, as well as specifically Kitsap County. I bring special interest to ensure that ferry service is well represented in this conversation. I have already been approached by some of the non-motorized groups to make sure that issue is represented. I will be delighted to take forward any issues that people in Kitsap have.

Chair Lent: This June's Complete Streets Leadership Forum was a tremendous success. We were hosted by Mayor Erickson at the Poulsbo City Hall.

Mayor Erickson: I think the event was a great success. There were many knowledgeable speakers and participants. Complete Streets is the concept of considering all modes and all users when developing transportation solutions. When you implement that concept early-on in planning you can get great results. I think a lot of people got a lot out of the event. It was a well-organized event.

Chair Lent: This is an inclusive and complete packet on the legislative agenda. KRCC puts together a legislative agenda each year, and this year we have results on not only our priorities, but those of the Association of Washington Cities (AWC), Kitsap Transit, and our other partner agencies.

Mary McClure: Thanks go to Myrna Knode on our staff for such an extensive report on the Legislative Agenda. For the Complete Streets Forum ~ Vicky Clarke engineered and coordinated the event.

5. Work Program Report:

a. Transportation:

- Countywide Multi-Modal Transportation Plan

As part of the Contingency Funding recommendations, the Transportation Policy Committee has recommended funding for Phase I of the Plan. We are working with the KRCC Transportation Committees and Planning Directors, as well as Kitsap Transit and Kitsap County Health District, to formulate what's do-able and important. Phase I will run longer than initially anticipated, but will cost less overall. The proposal involves gathering all of Kitsap's transportation and corridor plans, reviewing what we have, where there are gaps and what recommendations have not been implemented but could be useful. This portion of the Plan is underway.

Demographic analysis will be useful to Kitsap Transit, but also potentially for the Health District and other agencies. An important element of Phase I will be developing a toolbox of possible strategies in relation to transportation planning (eight topics, as listed in the Board Packet), which will be developed using expertise from existing staff and regional resources. We anticipate beginning the topic meetings this year and during first half of 2012.

We will work intensively with Planning Commissions, City Councils, County Commissioners and the KRCC Transportation Policy Committee to refine the toolbox. The final element of Phase I is scoping Phase II of the Plan. The level of detail of Phase II is yet to be defined, and could be as broad as guiding principles for development, or more specific, such as modal solutions for specific corridors with extensive public input. The level of detail will likely not be known until we are well into Phase I, and could differ by corridor or region.

Points of Discussion:

Commissioner Garrido: This is clearly a substantial staff time commitment. What commitment has been given by staff?

Mary McClure: The Planning Director and Transportation Committee staff have agreed to participate to whatever level they are able.

- Federal Contingency Funding Recommendations

Additional transportation funds were available this year from PSRC through both returned funds and the usual annual re-distribution of Federal Funds. No returned countywide funds came to Kitsap because all of Kitsap projects were completed within the time allowed. No returned regional funds came to Kitsap because Kitsap projects were relatively low on the regional contingency list. A total of \$1.82m came to Kitsap through the annual redistribution. This

represents the difference between annual available funds and the conservative estimate of funds made by PSRC at the beginning of each 2-3 year funding cycle. The KRCC Transportation Committees used the 2010 Kitsap contingency list as a starting point during this several-month process, and asked project sponsors about the status of their projects and what the project's current need was. All active projects on the contingency list were funded except two - Port Orchard Cedar Sidewalks and Bremerton Pacific Avenue; they will remain on the contingency list, should additional funds become available. Project notes:

- KRCC and PSRC focus on funding projects to complete phases. While Kitsap Transit's Annapolis and Port of Bremerton's SKIA projects were not funded to the full funding request; both jurisdictions have committed to use agency funds to make up the difference.
- The Countywide Multi-modal Transportation Plan: Phase I Assessment may need to be sent out for public comment by PSRC as the project has evolved from a countywide non-motorized spine [to be incorporated into the multi-modal plan].

Points of Discussion

Council Member Powers: If additional contingency funds do not come in, when can Port Orchard expect funds to complete the project?

Mary McClure: The next funding cycle was originally scheduled for this year, but is now anticipated in 2012 or 2013 at the latest.

Council Member Powers: Port Orchard had no staff or elected representation at the last Transportation Committee meeting. I was upset to see that the Cedar Sidewalks project had been dropped off the contingency list. The City has been working on this project for about five years. At one point, the Transportation Policy Committee (TransPOL) had adopted the policy that safe pedestrian facilities around schools were their number one funding priority. I do not see this happening. I don't know how the City is going to do the project now. There are two schools contained within this project. My understanding is that the Cedar Sidewalks project is ready to go to construction. Many projects received funding for planning or design.

Mayor Lent: Are there additional State funds, in addition to this funding source, that could be used for this type of project?

Vicky Clarke: There is the federal, WSDOT-administered, Safe Routes to Schools program for exactly this type of project. I'd be happy to talk with your engineer about the project. I am sure that he is aware of this funding source.

Council Member Powers: I think I will have to vote against this list. I don't want to offer an amendment to take money away from another project. I would like to see the Board today say that they would like to do something for the Cedar Sidewalks Project in Port Orchard.

Mayor Lent: I would like to move forward with the motion on the floor in support of the projects. Any Board Member is free to vote against the motion.

Mayor Erickson: The Cedar Sidewalks Project is the only one of all the projects listed here that is eligible for the Safe Routes to Schools funding. I was not at the TransPOL meeting, but that may have been part of the thinking as to why this project was not funded. I do not think it would be wise to go against the recommendation of TransPOL.

Commissioner Garrido: Were all jurisdictions represented at TransPOL?

Several Board members concurred that all jurisdictions but Port Orchard and the Port of Bremerton were represented by elected leadership at the meeting. The Port of Bremerton engineer was in attendance.

Motion: (Mahan) and second (Brackett) to approve the List of Contingency Projects for funding, and refer the Revised Contingency List to the TransPOL for prioritization should additional 2011-2013 Cycle funds become available.

Yeas: Brackett, Erickson, Franz, Garrido, Gelder, Lent, Mahan. Nay: Powers
Motion carries.

Commissioner Mahan moved that the Port Orchard and Bremerton projects be the #1 and #2 priorities in the next round of funding.

Points of Discussion:

Commissioner Mahan: Jurisdictions put a lot of effort into preparing projects for grant funding. Both the Port Orchard and Bremerton projects are significant projects that agencies have been working on for a long time. These projects should not have to compete against other projects in the next round of funding. I am not sure what funding is available, but I think these projects should be the top two priorities of KRCC.

Council Member Franz: I am sensitive to the concerns voiced here today. However, I am concerned about stepping out of the process we have in place. We don't have the criteria by which projects are weighed in front of us. These projects might not be the future priorities of these jurisdictions. For example, an emergency project could arise before additional funds become available. The Board's comments and conversation today should be reported back to the TransPOL as they move forward with future prioritization.

Mayor Erickson: I agree that we don't know which funds will be available and when. Both Bainbridge Island and Poulsbo have had emergency road projects funded during this cycle. The Safe Routes to Schools funding is absolutely designed for the Cedar Sidewalks Project. Poulsbo used that funding source for a recent schools project.

Motion: (Mahan) and second to approve the two Contingency List Projects as #1 (Cedar Sidewalks) and #2 (Pacific Avenue) for funding by the first available regional funds.

Yeas: Mahan, Powers Nay: Brackett, Erickson, Franz, Garrido, Gelder, Lent. Motion fails.

- T2040 Prioritization Process *Mayor Erickson, City of Poulsbo*

A presentation on T2040 Prioritization was included in the Board meeting packet, and can be downloaded from www.KitsapRegionalCouncil.org

The 2040 Prioritization Working Group is involved in PSRC's effort to marry VISION 2040, the regional planning document, to Transportation 2040, the list of transportation projects for the region between now and 2040. This list contains projects totaling \$230 billion. The prioritization process involves developing a set of criteria with which to rank the projects. Half of the requested funds are for preservation projects, while most of our grant processes are for building new facilities. In a move toward financial stability, this is the first time I have seen such a focus on preservation.

Initially, seventeen criteria were tested as the metrics for weighing the projects against one another. The test indicated that such a high number of criteria made for uneven results. The group is now considering five criteria to score projects against, each with their own specific definition. The criteria are mobility, community character, prosperous economy, social responsibility and sustainable environment. Geographic equity has not yet been discussed. There are significant differences in priorities and values among all the Group members. Going forward, the Group will consider several key questions, including whether and where project cost should be factored into the prioritization criteria, and whether funding should go first to designated centers, or

communities that have grown or are growing despite not being designated centers. VISION 2040 is clear that the focus of growth should be on transportation services that connect centers. Creating services to locations that are not designated centers induces sprawl and is contrary to the Growth Management Act. Kitsap County is relatively small compared with the other Counties in the Puget Sound Region (Pierce, King, Snohomish), but ensuring that some Kitsap projects are funded is vital.

Points of Discussion

Mary McClure: The PSRC Regional Staff Committee is also involved in this work, and from their perspective there are challenges in evaluating projects that are at the conceptual stage. It is important to understand project specifics to be able to score them effectively. For instance, do all arterial projects have sidewalks? The recent loss of some funding sources – such as Sound Transit’s federal earmarks – means stronger competition for PSRC funds, and an evolving discussion around geographic equity.

Commissioner Garrido: At our first meeting, discussion among the Connecting Washington Task Force placed more value on sustaining the existing transportation system rather than building new facilities. In the long-term, we are looking at maintaining and sustaining the existing system.

b. Growth Management Planning: Revisions to Countywide Planning Policies: County Process

The schedule has slipped a little, but we are still on-track for County adoption and City and Tribal ratification by the end of the year. The County has completed the SEPA process, which returned a Determination of Non-Significance (DNS). The SEPA appeal period carries through early August. There will be a public hearing with the Board of County Commissioners on August 22, with hopefully action that day. County adoption will trigger the City and Tribal ratification process. The schedule for adoption and the proposed revisions to the Countywide Planning Policies are on the KRCC website. The DNS will also be added.

Mayor Lent: We will add this information to the City of Bremerton website too.

c. CDBG & Low Income Housing Grant Programs: Planning & Funding Set-Aside for Coordinated Entry Program

Kirsten Jewell, Housing Grant Programs Manager, presented information on the proposed set-aside from the Homeless Housing Grant Program for a Kitsap Coordinated Entry Program. Board members generally expressed support for the concept, especially those on the Housing Advisory Team. Points of discussion:

Mayor Erickson: Some communities have not had success with Coordinated Entry, but what we have right now is not working. Fund it for a year, then evaluate – and fund it sufficiently to be effective.

Council Member Powers: Why have other communities’ efforts failed? *Mayor Erickson:* In Pierce County the problem was not enough staff ~ a huge demand that could not be met.

Commissioner Garrido: How we are bringing service providers together to improve service delivery?

Council Member Brackett: Are there projections re: increases in need for service capacity?

Kirsten Jewell: Based on current service levels and some anecdotal evidence, service need is not declining and will most likely increase.

Mayor Erickson: Is the \$170,000 CTED funding included in this budget?

Kirsten Jewell: That is a separate grant that requires each community to have a Coordinated Entry program by the end of 2014

Commissioner Gelder: What plans are in place for future funding?

Kirsten Jewell: House Bill 2048 did not pass, that would have provided additional funding for homeless housing and eliminate the sunset on a significant portion of existing funds. There will be renewed efforts next session to pass this legislation. In Whatcom County, the coordinated entry program was originally funded through their Homeless Housing Grant Program; its funding now comes from a broad range of sources. That would be the goal for Kitsap too.

Commissioner Gelder: Is one month enough time for a contractor to get up and running?

Kirsten Jewell: A contractor will be selected in early November, so they will actually have three months before starting the program.

Council Member Franz: How will program success be evaluated?

Executive Director Mary McClure: The Housing Advisory Team could remain intact to develop an evaluation process.

Commissioner Garrido: The RFP requires a team approach. Service providers have knowledge and can identify metrics for evaluation. Agencies need to identify how they will partner.

Mayor Erickson: The Coordinated Entry Advisory Group should be continued, meeting with the Housing Advisory Team periodically.

Motion: (Gelder) and second (Franz) to approve the Coordinated Entry program approach, as recommended by the Coordinated Entry Advisory Group, and described in the draft Request for Proposals, and approve \$350,000 to fund this program, as a set-aside from the Homeless Housing Grant Program 2012 cycle. The Housing Advisory Team and the Housing Funders Leadership Group, coordinated by KRCC staff, are empowered to carry out the RFP process, and recommend a Lead Agency for approval by the KRCC Executive Board at the November 1, 2011 Special Board Meeting.
Motion carried unanimously.

d. Public Works: Potential Cost Efficiencies *Mary McClure*

The Public Works Directors have been actively involved in the conversation about cost efficiencies through service consolidation and have been receptive and responsive to the possibilities. Spencer Horning is no longer representing Navy Region Northwest, but the KRCC has appreciated his input and participation with the Public Works Group. Kitsap Transit intends on participating as appropriate.

Cost efficiencies have been considered in several key areas. The presentation related to this agenda item can be downloaded from the KRCC website: www.KitsapRegionalCouncil.org. The following potential areas for collaboration were highlighted:

- Vehicle Fleet Management
 - Consolidation of repair and maintenance is a possibility.
 - Consolidating boat fleets would involve inter-agency relationships between law enforcement agencies as well as public works.
 - Specialist vehicles tend to be used by all jurisdictions at the same time (*i.e.* snow plows) and can't be scheduled on a routine basis.
- Stormwater
 - Collaboration is already occurring.
 - There is the recognition that opportunities for future collaboration may evolve, especially for larger ponds and underground tanks.
 - Written contracts and liability insurance are necessary for collaboration to work.

- Capital Facilities
 - Public Works Directors have interest in comparing Capital Facilities plans to explore potentials for future facility sharing or consolidation.

This information was initially shared at the 2010 KRCC Board Retreat, with the intention of Board members' sharing that information within their jurisdiction. In December, the Public Works Directors sought policy feedback, but received no direction to move forward. Mayors Lent, Erickson, and Coppola have recently been involved in conversation with the Ruckleshaus Center about stimulating this kind of conversation. There is good possibility for consolidation here, but policy direction is needed to enable this discussion to move forward.

Points of Discussion

Mayor Lent: The Ruckleshaus Center could provide us with a proposal for cost-efficiencies for around \$15,000. As we are all focused on budgets for next year, I don't believe this is something we will look at during 2011.

Commissioner Garrido: This is similar to a conversation occurring at the County level about providing regional service and the Cities providing more urban services. Probably the Commissioners should talk about this further.

6. Member Agency Comments: *One.*

Mayor Lent: Welcome to City Notify, a private business with a line of messaging service products designed for public agencies. They will be talking with Mary McClure to see if they can be of assistance in a similar vein to the previous presentation.

7. Citizen Comments: *None.*

8. Adjourn: 10:19 a.m.

Meeting Participants:

Kim Brackett, City of Bainbridge Island	Tom Danaher, Naval Base Kitsap *
Pete Dawson, Naval Base Kitsap **	Becky Erickson, City of Poulsbo
Hilary Franz, City of Bainbridge Island	Charlotte Garrido, Kitsap County
Robert Gelder, Kitsap County	Patty Lent, City of Bremerton
Bill Mahan, Port of Bremerton	Carolyn Powers, City of Port Orchard

* Alternate ** Non-Voting

Executive Management by McClure Consulting LLC:

Mary McClure, Executive Manager	Vicky Clarke, Project Coordination
Kirsten Jewell, Project Coordination	Myrna Knode, Executive Assistant

Board Members Not in Attendance:

Kelly Baze, Port Gamble S' Klallam Tribe *	Linda Berry-Maraist, City of Poulsbo
Josh Brown, Kitsap County	Jim Colebank, City of Port Orchard *
Lary Coppola, City of Port Orchard	Leonard Forsman, Suquamish Tribe
Kirsten Hytopoulos, City of Bainbridge Island *	Will Maupin, City of Bremerton
Rob Purser, Suquamish Tribe *	Dianne Robinson, City of Bremerton
Jeromy Sullivan, Port Gamble S' Klallam Tribe	Greg Wheeler, City of Bremerton *
Roger Zabinski, Port of Bremerton *	

* Alternate

Others in Attendance:

Greg Bender, City Notify	Juanita Clark, Housing Kitsap
Manny Cruz, Kitsap Mental Health Services	Larry Eyer, Kitsap Community Resources
Dave Frederick, Coffee Oasis	Beverly Kinkaid, Sound Grants
Raelenea Rodriguez, North Kitsap Fishline	Sally Santana, Citizen
John Snyder, City Notify	Bonnie Tufts, Kitsap County CDBG
Leann Weaver, Georgia's House	Jan Wold, Citizen



Kitsap Regional Coordinating Council

Chair
Mayor Patty Lent
City of Bremerton

Vice-Chair
Commissioner Josh Brown
Kitsap County

Commissioner Charlotte Garrido
Commissioner Robert Gelder
Kitsap County

Council Member Will Maupin
Council Member Dianne Robinson
Council Member Greg Wheeler *
City of Bremerton

Council Member Kim Brackett
Council Member Hilary Franz
Council Member Kirsten Hytopoulos*
City of Bainbridge Island

Mayor Lary Coppola
Council Member Carolyn Powers
Council Member Jim Colebank *
City of Port Orchard

Mayor Becky Erickson
Council Member Linda Berry-Maraist *
City of Poulsbo

Council Chair Leonard Forsman
Rob Purser*
*Suquamish Tribe****

Council Chair Jeremy Sullivan
Council Member Kelly Baze
*Port Gamble S'Klallam Tribe****

Commissioner Bill Mahan
Commissioner Roger Zabinski *
Port of Bremerton

Captain Pete Dawson
Tom Danaher, PAO *
*Naval Base Kitsap***

Mary McClure
*Executive Management
McClure Consulting LLC*

* *Alternate*
** *Ex Officio Member*
*** *Associate Member*

P.O. Box 1934
Kingston, WA 98346
360-377-4900 (voice)
360-297-7762 (fax)
www.KitsapRegionalCouncil.org

KRCC Executive Board Study Session *July 26, 2011*

Legislative Outcomes

A full analysis of legislative outcomes for the 2011 session was included in the Board packet. Download the packet from: www.KitsapRegionalCouncil.org.

The 2011 Legislative Session was a difficult one, due to the deficit reduction and cost savings required. Many of the same issues will arise again during the 2012 Session. Work on the 2012 KRCC Legislative Agenda will begin at the September 27th KRCC Board Meeting.

Points of Discussion

- Safe Drugs legislation failed: there were 23 anti-lobbyists working the session.
- Bills concerning Public Records were not clear and included too many additional elements that “muddied the waters.” A successful Public Records bill needs to be concise and narrowly construed, to ensure transparency.
- Clean Water Bill
 - 60%+ of revenue would have gone into WA State general fund
 - Find out name of sponsor(s) and contact: we will support if specific elements are different in 2012 proposed bill.
 - Council Member Franz to pass message back to Environmental Groups.
- Where does AWC stand on MVET backfill funding?

Next Steps: 2012

- KRCC staff to solicit items for 2012 agenda from KRCC Board members and local lobbyists. The agenda should focus on a few issues, similar to the 2011 Agenda; many issues are expected to be carried forward from last year.
- The November special KRCC Board meeting will be used (in part) for developing the 2012 KRCC Legislative Agenda.
- KRCC to host a legislative breakfast in December with local and state elected officials, once the KRCC Legislative Agenda is approved.

Board Members In Attendance:

Kitsap County:	Charlotte Garrido	Robert Gelder
Bremerton:	Patty Lent	
Bainbridge Island:	Kim Brackett	Hillary Franz
Poulsbo:	Becky Erickson	
Port Orchard:		
Port of Bremerton:	Bill Mahan	
Naval Base Kitsap:		



Kitsap Regional Coordinating Council

* Total 2011 KRCC budget did not include this total, pending reconciliation of AHFA/HH Grant Program carry-forward with County Auditor's office. It is shown here for reader convenience.

3b. Proposed Budget Amendment: September 27, 2011

Expenses	2010 Final Budget	2011 Adopted Budget	2 nd Qtr Proposed Amendment	Total Proposed 2011 Amended
Core Program	347,043	248,087	+3,625 ¹	\$251,712
Management Services	266,880	199,400	+ 2,400 ²	201,800
Re-imburse Expenses	13,000	8,500		
Unallocated	47,163	28,187	- 2,400 ² +3,625 ¹	29,412
Organizational Expenses ¹	15,000	12,000		
Kit~Net	19,000	17,100		
Management Services	14,966	14,590		
Re-imburse Expenses	600	1,300		
Unallocated	3,434	1,210		
AHFA/HH Grant Programs	101,439	75,300	+ 13,520 ³	\$88,820
Management Services	79,200	71,265	+12,295 ³	\$83,560
Re-imburse Expenses	5,800	4,035	+ 1,225 ³	\$ 5,260
Unallocated	16,439	tbd		tbd
Total KRCC Expenses	\$467,482	\$340,487 *	+17,145	

Revenues

Core Program	347,043	248,087	+3,625 ¹	\$251,712
Est Beginning Balance	134,938	49,300		
Member Dues	211,390	198,787	+ 3,625 ¹	\$202,412
Miscellaneous Income	715			
Kit~Net Member Assessments	19,000	17,100		
AHFA/HH Grant Programs	101,439	80,439	+ 13,392 ³	\$93,831
Est Beginning Balance		10,439	- 10,439 ³	tbd
Doc Record Fee Admin		55,000	+ 9,225 ³	\$64,225
HMIS (WA Commerce)	25,000	15,000	+ 10,000 ³	\$25,000
AHGP Admin Set-aside			+ 4,606 ³	\$ 4,606
Total KRCC Revenues	\$467.482	\$345.626 *	+17.017	

¹ Reflects bookkeeping error in accounting for County Kit~Net contribution.

² Core Program change (+\$2,400 to Management Services from Unallocated) reflects additional staff time needed primarily for the CPP amendment process, and approved by the Executive Committee.

³ Reflects changes to the Affordable Housing grant programs that KRCC administers:

- Revenues: Document recording fees are somewhat higher, the HMIS contract was extended six months, and the set-aside for AHGP admin that was approved as part of the 2010 grant cycle.
- Expenses: Both the Coordinated Grant Program (integrating the two CDBGs' programs, the HHGP, and the AHGP) and the Coordinated Entry Program took significantly more time than originally anticipated.
- In addition, tracking the annual budget carryover involves accounting complexities that we continue to coordinate with the Kitsap County Auditor's office.

Board Action Requested: Approve changes to the 2011 budget as presented.



Kitsap Regional Coordinating Council

Chair
Mayor Patty Lent
City of Bremerton

Vice-Chair
Commissioner Josh Brown
Kitsap County

Commissioner Charlotte Garrido
Commissioner Robert Gelder
Kitsap County

Council Member Will Maupin
Council Member Dianne Robinson
Council Member Greg Wheeler *
City of Bremerton

Council Member Kim Brackett
Council Member Hilary Franz
Council Member Kirsten Hytopoulos*
City of Bainbridge Island

Mayor Lary Coppola
Council Member Carolyn Powers
Council Member Jim Colebank *
City of Port Orchard

Mayor Becky Erickson
Council Member Linda Berry-Maraist *
City of Poulsbo

Council Chair Leonard Forsman
Rob Purser*
Suquamish Tribe***

Council Chair Jeromy Sullivan
Council Member Kelly Baze
Port Gamble S'Klallam Tribe***

Commissioner Bill Mahan
Commissioner Roger Zabinski *
Port of Bremerton

Captain Pete Dawson
Tom Danaher, PAO *
Naval Base Kitsap **

Mary McClure
Executive Management
McClure Consulting LLC

* Alternate
** Ex Officio Member
*** Associate Member

P.O. Box 1934
Kingston, WA 98346
360-377-4900 (voice)
360-297-7762 (fax)
www.KitsapRegionalCouncil.org

2012 Work Program: Proposed September 27, 2011

Core Mandated Program Elements (Federal / State)

1. Coordinate participation in Federal / Regional Planning
 - Transportation
 - Track existing federally-funded project obligations
 - Conduct federal transportation funding cycle
 - Countywide Multi-Modal Transportation Plan: Phase 1 Assessment
(federally-funded)
 - Growth Management
 - Population Distribution & Related Data Analyses
(e.g. Census, UGA/non-UGA split, Buildable Lands, et al)
 - Review Countywide Planning Policies for un-met policies
 - Technical Forecasting Update (PSRC)
 - Topics of shared interest e.g. Census results, TDR's
 - Strengthen Kitsap reps' interaction within PSRC Boards & Committees

Continuing Non-Mandated Programs

2. Develop 2012 Legislative Agenda: Selected Strategic Issues that KRCC Members will support in Olympia
3. Cross-Agency Cost Efficiencies: Public Works
4. Support Countywide Economic Development
 - Coordinate with KEDA on issues of common action/discussion at Board level
 - Coordinate *Government as Partner* elements of Kitsap 20/20 Strategy

Administrative

5. Review Member Agency Funding Principles & Strategies

Self-Funding Programs

6. Kit~Net Program, as per ILA & Program Goals for 2012
7. Low Income/Homeless Housing Grant Programs
 - Manage Coordinated Grant Cycles
 - Implement HMIS System/WA Commerce Pilot Project
 - Implement Coordinated Entry Program
 - Coordinate Housing Advisory Team
 - Coordinate Housing Leadership Group



Kitsap Regional Coordinating Council

2012 Budget & Work Program Assumptions

- ✓ Executive Board: (10) every month meetings:
[except January & August]
Supported by monthly Executive Committee meetings

During 2011, we experimented with meeting every other month, with the Executive Committee reviewing after six month trial. **Results:** Do-able, but

...

- (1) Challenging ... cuts down on useful dialogue among members.
- (2) Eventually had to add special November meeting to meet program requirements [CDBG].
- (3) Transportation Planning during 2012 will need frequent Board updates & discussion.

- ✓ Monthly meetings of each of three standing committees:
 - TransTAC
 - TransPOL
 - Planning Directors Forum
- ✓ Coordination with Puget Sound Regional Council:
 - Policy-level representatives' monthly teleconferences:
 - Executive Board
 - Growth Management
 - Transportation
 - Economic Development
 - Director participates:
 - Regional Staff Committee (bi-monthly)
 - Transportation 2040 Project Prioritization Work Group (as scheduled by PSRC)
 - Regional Project Evaluation Committee (monthly)
 - Countywide Chairs Committee (monthly)
- ✓ Quarterly meetings of each of two standing committees:
 - Public Works Group
 - Kit~Net Policy Advisory Group
- ✓ Director participates: KEDA Board of Directors (non-voting)
- ✓ Director participates: Local Integrating Organization Process Advisory Committee
- ✓ Sponsor one Legislative Gathering pre-2013 Session with Legislative Agenda
Invite participation from our State Legislators in Board Study Sessions as useful.
- ✓ Office staffed Monday through Thursday, 8:30 – 11:30 a.m. with extensive staff tele-working.



Kitsap Regional Coordinating Council

*For
Discussion
Only*

Draft 2012 Budget
September 27, 2011

Expenses	2010 Amended 11/2/10	2011 Adopted Budget	2011 Amended Budget	2012 Draft Budget
Core Program	347,043	248,087	\$251,712	\$248,087
Management Services	266,880 ²	199,400	201,800	199,400
Re-imburse Expenses	13,000	8,500	8,500	8,500
Unallocated	47,163	28,187	29,412	26,962
Organizational Expenses ¹	15,000	12,000	\$251,712	12,000
Kit~Net	19,000	17,100	17,100	Waiting for
Management Services	14,966	14,590	14,590	Rec from Kit~Net PAG
Re-imburse Expenses	600	1,300	1,300	
Unallocated	3,434	1,210	1,210	
AHFA/HH Grant Programs	101,439		\$88,820	\$88,820
Management Services	79,200		\$83,560	\$83,560
Re-imburse Expenses	5,800		\$ 5,260	\$ 5,260
Unallocated	16,439		tbd	tbd
Total KRCC Expenses	\$467,482			

Core Program	347,043	248,087	\$251,712	\$251,712
Est Beginning Balance ³	134,938	49,300	tbd	tbd
Member Dues	211,390	198,787	\$202,412	\$202,412
Miscellaneous Income	715			
Kit~Net Member Ass'ments	19,000	17,100	17,100	See above
AHFA/HH Grant Programs	101,439		\$93,831	tbd
Est Beginning Balance			tbd	tbd
Doc Record Fee Admin			\$64,225	\$64,225
HMIS (WA Commerce)	25,000		\$25,000	\$25,000
AHGP Admin Set-aside			\$ 4,606	
Total KRCC Revenues	\$467,482			

¹ Organizational expenses include website, phone, post office box, insurance, and NDGC facility use fees.

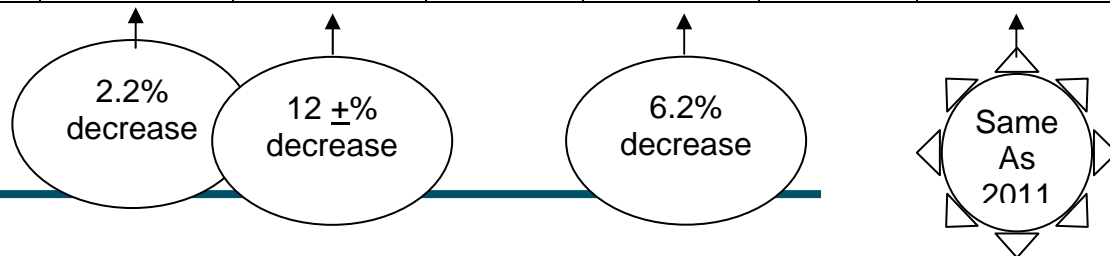
² Includes **2009 & 2010** Services outside of Core Program &/or contract: Coordinate jurisdictions' effort re: HUD Sustainability Grant; federal trans funding (New Jobs Bill Prep; federal Trans Enhancements Program; WTC Listening Session) Board Retreat; Additional ARRA Grant Process & WA State Housing Grant Programs

³ Beginning Balance adjustment, as per Kitsap County Finance Administration, not yet calculated



4a. Proposed 2012 Member Agency Cost Allocations
September 27, 2012

	2007 Dues	2008 Dues	2009 Dues	2010 Dues	2010 Kit-Net	2011 Dues	2011 Kit-Net	2012 Proposed	2012 Kit-Net
Kitsap County 57.7%	\$141,972	\$145,660	\$142,456	\$125,778	\$4,000	<12,978> \$116,800	\$3,625	\$116,800	Awaiting Kit-Net Policy Advisory Group recommendation re: budget & work program
Bremerton 12.3%	\$28,049	\$28,781	\$28,148	\$24,944	\$750	\$24,944	\$650	\$24,944	
Bainbridge Island 13.9%	\$31,725	\$32,550	\$31,834	\$28,115	\$750	\$28,115	\$650	\$28,115	
Port Orchard 2.9%	\$6,693	\$6,867	\$6,716	\$5,919	\$750	\$5,919	\$650	\$5,919	
Poulsbo 3.2%	\$7,331	\$7,523	\$7,358	\$6,553	\$1,000	\$6,553	\$650	\$6,553	
Pt Gamble S'Klallam Tribe 0.5%	\$1,124	\$1,155	\$1,130	\$1,057	\$500	\$1,057	\$500	\$1,057	
Suquamish Tribe 0.5%	\$1,124	\$1,155	\$1,130	\$1,057	\$500	\$1,057	\$500	\$1,057	
Port of Bremerton 3.8%	\$8,638	\$8,861	\$8,667	\$7,610	\$500	\$7,610	\$500	\$7,610	
Kitsap Transit 5.1%	\$11,612	\$11,916	\$11,651	\$10,357	\$500	\$10,357	\$500	\$10,357	
TOTAL 99.9%	\$238,268	\$244,468	\$239,090	\$211,390		\$202,412		\$202,412	





Kitsap Regional Coordinating Council

Chair
Mayor Patty Lent
City of Bremerton

Vice-Chair
Commissioner Josh Brown
Kitsap County

Commissioner Charlotte Garrido
Commissioner Robert Gelder
Kitsap County

Council Member Will Maupin
Council Member Dianne Robinson
Council Member Greg Wheeler *
City of Bremerton

Council Member Kim Brackett
Council Member Hilary Franz
Council Member Kirsten Hytopoulos*
City of Bainbridge Island

Mayor Lary Coppola
Council Member Carolyn Powers
Council Member Jim Colebank *
City of Port Orchard

Mayor Becky Erickson
Council Member Linda Berry-Maraist *
City of Poulsbo

Council Chair Leonard Forsman
Rob Purser*
*Suquamish Tribe****

Council Chair Jeromy Sullivan
Council Member Kelly Baze
*Port Gamble S'Klallam Tribe****

Commissioner Bill Mahan
Commissioner Roger Zabinski *
Port of Bremerton

Captain Pete Dawson
Tom Danaher, PAO *
*Naval Base Kitsap***

Mary McClure
*Executive Management
McClure Consulting LLC*

* *Alternate*
** *Ex Officio Member*
*** *Associate Member*

P.O. Box 1934
Kingston, WA 98346
360-377-4900 (voice)
360-297-7762 (fax)
www.KitsapRegionalCouncil.org

4b. Boeing 737 Assembly Plant Washington Aerospace Partnership *September 27, 2011*

Attached is a brief description of the WA Aerospace Partnership and efforts to raise funds for its work to attract the Boeing 737 Assembly Plant to Washington State, with the South Kitsap Industrial Area being one of just a few “contestant” locations. Intention is to develop local funding in Kitsap, to help support a Marketing Analysis by the consulting group Accenture (study cost: \$380,000) in the amount of \$35,000, distributed as follows:

Port of Bremerton:	\$10,000
Kitsap County	\$ 5,000
City of Bremerton:	\$ 5,000
City of Port Orchard:	\$ 5,000
City of Poulsbo:	\$ 3,000
City of Bainbridge Island:	\$ 3,000
Suquamish Tribe:	\$ 2,000
Port Gamble S’Klallam Tribe:	\$ 2,000
Total:	\$35,000

Will your jurisdiction support
this financial commitment to
the region’s and Kitsap’s
future?

FUTURE OF 650 AEROSPACE COMPANIES & 87,000 JOBS HINGE ON DECISIONS NEXT YEAR.



The Boeing Company will decide next year where to expand to accommodate production of the new 737 MAX – will it be in Washington or somewhere else?

Every aerospace supplier has a stake in this decision regardless of whether its business is related to the 737. Boeing's choice will either affirm its long-term commitment to aircraft assembly in Washington or signal a shift to further diversify production elsewhere.

This is not a random, one-off decision – it's truly about whether there will be robust aerospace industry in Washington in the future!

Business, government and labor leaders from throughout the state are mounting a campaign to make sure Washington is in the best position. Governor Gregoire has made it a top priority. The statewide Washington Aerospace Partnership is leading the charge – chaired by Bob Drewel, executive director of the Puget Sound Regional Council; Jeff Johnson, president of the Washington State Labor Council; and Tayloe Washburn, former chair of the Greater Seattle Chamber of Commerce.

Competitiveness Analysis

Accenture, one of the world's premier management consulting firms, is assessing our state's competitive position and will recommend new actions that can be taken to further improve it. This assessment updates and drills down on the study that was done to win the 787 competition. It also focuses on strategies for expanding the aerospace supplier base.

The analysis will be done next month – in time to develop proposals for local and state government leaders to consider and act upon.

"This is much bigger than the 737 MAX. It's about the future of aerospace in Washington and whether companies in the business here today are going to be winners in the future."

Bob Drewel
Former Snohomish County Executive,
Current Executive Director of the Puget Sound
Regional Council

Find out what you can do to help.



**WASHINGTON
AEROSPACE
PARTNERSHIP**

Public Education and Awareness

We're working to:

- To expand the coalition – all segments of the economy and all geographic areas
- Deploy tactics from the news media outreach to one-on-one contacts
- Convince elected and appointed decision makers in the state that they need to take whatever actions are necessary to address the ongoing needs of the aerospace industry and to make Washington the most competitive state in the nation for aerospace
- Make aerospace a very high priority for elected, civic and community leaders across the state.

Your Help is Urgently Needed

We need you and your company to join the Partnership. Give us support, your ideas – and a financial contribution.

Labor organizations, state and local governments have already committed a total of \$400,000. We need to raise \$200,000 more from the private sector, and we're especially counting on contributions from the aerospace companies that have a direct interest in the outcome.

We need large companies (plus 5,000 employees) to contribute at least \$20,000 each. We're asking smaller companies – firms with 25 to 1,000 employees to contribute between \$5,000 and \$20,000 each. The money is being managed as a special account by the Economic Alliance of Snohomish County and is overseen by an the WAP Executive Committee.

“Economists are telling us this decision by Boeing may be the greatest opportunity for new industrial expansion – new business and jobs – in the entire country over the next decade.”

Tayloe Washburn, Former chair
Greater Seattle Chamber of Commerce

“Our region has been the backbone of the aerospace industry since Bill Boeing constructed his first plane here. Labor is committed to continuing this legacy built by the workers of Washington.”

Jeff Johnson,
Washington State Labor Council

Please make a contribution to the Washington Aerospace Partnership and mail it to:

Washington Aerospace Partnership
c/o Economic Alliance of Snohomish County
728 134th Street SW Suite 128
Everett, Washington 98204

Questions? Call Tayloe Washburn at 206.419.3878

September 2011



**WASHINGTON
AEROSPACE
PARTNERSHIP**



5a. Kitsap Coordinated Grant Program: Recommendations for 2012 Funding Cycle

September 27, 2011

Attached are recommendations for grant awards from the two Grant Recommendation Committees (GRCs) for the Coordinated Grant Program. The first cycle of the Coordinated Grant Program went smoothly, which is particularly noteworthy due to the complexity of coordinating the requirements of the six (yes, 6!) different funding sources.

The Capital GRC considered 26 applications for capital or operations & maintenance projects, with total requests of \$4.2M. An additional two Capital applications had to be disqualified for major deficiencies in the applications. Estimated Capital funds available from all sources totaled \$2,294,357.

The Public Service GRC considered 34 Public Service and two Economic Development applications, totaling \$2M, with estimated funds available of \$861,091.

Each GRC carefully reviewed written applications, interviewed applicants, and evaluated each project/program on its own merits to develop the attached funding recommendations. They considered which populations the program serves, program effectiveness, agency capacity, program cost relative to how many people it serves, and how well it meets community needs, as identified in the KRCC Homeless Housing Plan, the CDBG Consolidated Plan, and Bremerton's Comprehensive Plan. Developing these recommendations required thoughtful analysis and vigorous discussions by the GRCs.

This year was particularly challenging due to the large gap between the community needs reflected in the grant requests (\$6.2m) vs. the funds available (\$3.2M). Many of the funding recommendations were very difficult ones because nearly all of the requests were supporting much-needed programs and projects in our community, yet there were simply not enough grant funds to recommend funding them all. One GRC member commented, "It's hard to work so hard and at the end feel so bad." Many thanks to all of the GRC members for volunteering for this extremely difficult work.

After the GRCs made their funding recommendations, the staff worked with the GRCs to match the recommended projects with the most appropriate funding source, with the goal of minimizing the number of contracts. This was an intricate process. Overall, there will be fewer contracts than in prior years and duplication of funding was eliminated.

The attached recommendations for grant funds include:

- Coordinated Grant Program 2012 Recommendations Overview summarizes information about projects & programs funded from **ALL funding sources** (including City of Bremerton grant programs which will be considered by that Council) ~ one for Capital & one for Public Service.
- Coordinated Grant Program 2012 Recommendations Summary includes project/program information for recommended awards from **ALL funding sources** ~ KRCC will make the awards for the County CDBG, County HOME, Homeless Housing Grant Program, and Affordable Housing Grant Program.

KRCC Executive Board action today will open the 30-day public comment period. Written public comment can be submitted to the KRCC office or the County CDBG office by October 25, 2011. At the November 1, 2011 Special KRCC Executive Board Meeting, 9:30am at the Main Meeting Chambers in the Norm Dicks Government Center, there will be a Public Hearing on these recommendations and the Board is anticipated to take action on approving grant awards.

Board Action Requested: Open the Public Comment Period for the Coordinated Grant Program 2012 Funding Recommendations.

5a. 2012 Coordinated Grant Process - Capital Recommendations OVERVIEW

Agency	Capital Project	Coordinated Grant funds requested	GRC Recommended Funding	City CDBG	County CDBG	City HOME	County HOME	AHGP
Agape	Sisyphus II Project Based O/M	\$47,414	\$47,414					\$47,414
Agape	Koinonia Inn Transitional Hsg. O/M	\$22,308	\$22,308					\$22,308
Boys & Girls Club	Bremerton Teen Center	\$200,000	\$40,000	\$40,000				
Bremerton Housing Authority	Bay Vista Affordable Homeownership	\$330,000	\$150,000			\$150,000		
Catholic Community Services	Benedict House	\$25,000	\$20,000					\$20,000
Catholic Housing	Max Hale Center	\$105,431	\$25,000					\$25,000
City of Bremerton Park & Rec.	Evergreen Park Accessible Play Project	\$162,000	\$162,000	\$162,000				
Community Frameworks	Built In Bremerton	\$300,000	\$90,000			\$90,000		
Housing Kitsap	Austurbruin Painting	\$48,400	\$48,400		\$48,400			
Housing Kitsap	Rhododendron Roof	\$150,000	\$87,000		\$87,000			
Housing Kitsap	Fairview Painting	\$150,000	\$35,000		\$35,000			
Housing Kitsap	Chico Passage	\$24,000	\$0					
Housing Kitsap	Single Family Rehab. Program	\$267,362	\$255,071		\$255,071			
Housing Kitsap	Down Payment Assistance Program	\$100,000	\$60,000				\$60,000	
Housing Resources Board	Island Home Upgrade	\$236,326	\$36,500		\$36,500			
Inland Empire Residential Res.	Frances Haddon Morgan Replac. Hsg.	\$150,000	\$150,000		\$19,500	\$100,000	\$30,500	
KCR	Jackson Village - new construction housing	\$200,000	\$180,000				\$180,000	
KCR	Weatherization Program	\$320,000	\$280,102	\$130,102	\$150,000			
KCR	Transitional Housing	\$70,000	\$64,562					\$64,562
Kitsap Mental Health Services	Scattered Site Rehab.- rental hsg.	\$612,624	\$451,000			\$451,000		
Lindquist Dental	Dental Clinic - new construction	\$200,000	\$0					
Low Income Housing Institute	Cedar Heights Apt. Rehab.	\$347,752	\$0					
Martha & Mary Child Services	Emergency Generator	\$30,000	\$0					
Martha & Mary Health Services	Call Light System Upgrade	\$78,000	\$0					
Westsound Treatment Center	O-Hana, Lighthouse, Oxford House	\$69,036	\$50,000					\$50,000
YWCA	Emerg. Shelter & Transitional Hsg.	\$52,000	\$40,000					\$40,000
TOTAL GRANTS:		\$4,297,653	\$2,294,357	\$332,102	\$631,471	\$791,000	\$270,500	\$269,284
TOTAL AVAILABLE:			\$2,294,357	\$963,573		\$1,061,500		\$269,284
UN-ALLOCATED:			\$0	\$0		\$0		\$0

CONTINGENCIES:

Decrease in County CDBG :

If decrease is under \$36,500 the Single Family Rehabilitation Program will be decreased.

If there is a decrease greater than \$36,500 HRB Island Home will be removed. Then the Single Family Rehabilitation Program will be decreased.

Decrease in County HOME: Housing Kitsap Down Payment Assistance Program will be decreased.

Increase in County CDBG : Weatherization will receive increase.

Increase in County HOME: Proportional increase will be given to all recommended projects.

Decrease in City CDBG : Weatherization will be decreased.

Decrease in City HOME: Kitsap Mental Health Services - Scattered Site Rehabilitation of Rental Housing will be decreased.

Increase in City CDBG : Boys & Girls Club Bremerton Teen Center will be increased.

Increase in City HOME: Proportional increase will be given to all recommended projects.

NOTE: CDBG and HOME project amounts may be reduced to cover project/activity delivery costs as outlined in the 2012 CDBG/HOME Policy Plan

5a. 2012 Coordinated Grant Process - Public Service Recommendations OVERVIEW

Agency	Public Service Project	Coordinated Grant Funds requested	GRC Recommended Funding	County CDBG	County Economic Dev.	County HOME	City CDBG	HHGP
Agape	Case Management Sisyphus II	\$58,967	\$19,500					\$19,500
Boys & Girls Club	Kitsap Program Operations	\$15,000	\$10,000				\$10,000	
Bremerton Foodline	Agency Salaries	\$22,000	\$13,600				\$13,600	
Bremerton Housing Authority	Rental Assistance	\$135,450	\$70,000					\$70,000
Bremerton Rescue Mission	Permanent Overnight Shelter	\$80,000	\$0					
Bremerton Services Association	Chuckwagon Meals on Wheels	\$30,000	\$19,500	\$19,500				
Catholic Community Services	Benedict House	\$92,000	\$45,500					\$45,500
Catholic Housing	Max Hale Center - Res. Services Coord	\$50,631	\$10,000					\$10,000
CK Foodbank	Food Distribution	\$20,000	\$13,600	\$13,600				
Helpline House	A Coordinated System of Service	\$12,000	\$10,000	\$10,000				
Holly Ridge	Partnership for Children at Risk	\$14,875	\$10,000				\$10,000	
Hope In Christ	Oasis Youth Cont. of Services	\$108,540	\$100,000				\$30,039	\$69,961
Hope In Christ	Teen Shelter	\$59,580	\$0					\$0
Hope In Christ	Job Training Program	\$54,180	\$0					
Housing Kitsap	Housing Stabilization Program	\$200,000	\$113,750					\$113,750
Housing Resources Board	Rental Assistance	\$60,000	\$48,000					\$48,000
Housing Resources Board	CHDO Operating	\$50,000	\$19,500			\$19,500		
KCR	Homeless Child & Family Services	\$160,000	\$123,641	\$47,523				\$76,118
Kitsap Adult Center For Learning	Transitioning Students to Workforce	\$20,000	\$10,000	\$10,000				
Kitsap Econ. Develop. Alliance	Selling To The Government	\$25,000	\$0					
Kitsap Humane Society	Low Income Vet Services	\$25,000	\$0					
Kitsap Recovery Center	Emergency Housing Program	\$131,760	\$87,500					\$87,500
Kitsap Sexual Assault Center	Child Abuse Intervention	\$37,000	\$15,000	\$15,000				
NK Fishline	Homeless Support Services	\$42,500	\$26,000					\$26,000
Olympic College Foundation	SING (Students In Need Group)	\$30,972	\$0					
RMH Services	Untreated Mentally Ill	\$35,000	\$0					
Salvation Army	Salvation Army Social Services	\$50,000	\$16,500					\$16,500
Soundworks Job Center	No-Fee Job Referral	\$10,000	\$0					
Washington CASH	Kitsap Microenterprise Dev. Initiative	\$80,000	\$20,000		\$20,000			
Weaver Foundation	Georgia's House	\$100,000	\$0					
Westsound Treatment Center	Case Management - O'Hana & Lighthouse	\$72,000	\$22,000					\$22,000
Westsound Treatment Center	Forward Bound	\$15,000	\$0					
Westsound Treatment Center	Behavioral Health Services	\$27,000	\$10,000	\$10,000				
YMCA	Childcare Scholarships	\$35,000	\$10,000	\$10,000				
YWCA	ALIVE Family Services	\$25,000	\$14,000	\$14,000				
YWCA	Legal Advocacy	\$25,000	\$13,000				\$13,000	
TOTAL GRANTS:		\$2,009,455	\$870,591	\$149,623	\$20,000	\$19,500	\$76,639	\$604,829
TOTAL AVAILABLE:			\$870,591	\$149,623	\$20,000	\$19,500	\$76,639	\$604,829
UN-ALLOCATED:			\$0	\$0	\$0	\$0	\$0	\$0

<p><u>CONTINGENCIES</u></p> <p><u>Increase in County & City CDBG:</u> Proportional cut to all agencies down to minimum of \$10,000</p> <p><u>Decrease in County & City CDBG:</u> Proportional to all agencies.</p>

5a. 2012 COORDINATED GRANT APPLICATIONS SUMMARY – CAPITAL

KITSAP COUNTY CDBG PROJECTS		
AGENCY/PROJECT/DESCRIPTION	2012 REQUEST	GRC RECOMMENDATION
<p>HOUSING KITSAP – AUSTURBRUIN PAINTING</p> <p>Funds will be used for the installation of new window flashing, replacing failed exterior trim elements and new exterior paint for 5 duplex homes and 6 carports.</p>	\$48,400	\$48,400
<p>HOUSING KITSAP – RHODODENDRON APARTMENTS RE-ROOFING PROJECT</p> <p>Funds will be used to replace the roofing on 2 residential apartment buildings consisting of 50 units of affordable housing and the building that houses the site office / site managers unit. The \$150,000 request was to replace the roofs with 50 year metal roofs. Alternatively, the roofs could be replaced with 30-year asphalt shingle roofs at a cost of \$87,000</p>	\$150,000	\$87,000 Asphalt Roof
<p>HOUSING KITSAP – FAIRVIEW PUBLIC HOUSING PAINTING PROJECT</p> <p>Funds will be used to install new gutters and paint the exteriors of 33 single family homes at the Fairview public housing site. The project cost breakdown is \$35,000 for new gutters and \$115,000 for painting.</p>	\$150,000	\$35,000 Gutters
<p>HOUSING KITSAP – SINGLE FAMILY REHAB PROGRAM</p> <p>Funds will be used to provide home rehabilitation loans or emergency grants to repair and preserve affordable owner occupied homes for the elderly, disabled and low income individuals and families in Kitsap County. The program addresses health and safety home repairs and provisions for disabilities or special needs a priority</p>	\$267,362	\$255,071 (\$187,709 CDBG funds plus \$67,362 program income)
<p>HOUSING RESOURCES BOARD – ISLAND HOME UPGRADES</p> <p>Funds will be used for materials and labor to provide upgrades to 10 permanently affordable rental units called Island Home. Upgrades will consist of the following list in priority order: 1) installation of safe, new, energy efficient heating systems (\$39,950), 2) replacement of bath tubs, bath tub fixtures, and bath tub surrounds (\$30,063), 3) replacement of all flooring in unit (\$75,176), 4) addition of closet doors in bedrooms and upgrade of interior doors in each unit (\$22,803), 5) new cabinets and countertops in all kitchens (\$53,774), 6) new bathroom vanities and fixtures (\$14,561).</p>	\$150,000	\$36,500 Heating System

<p>INLAND EMPIRE RESIDENTIAL RESOURCES – FRANCES HADDON MORGAN REPLACEMENT HOUSING</p> <p>Funds will be used for the acquisition of (3) houses, two in Bremerton and one in Port Orchard, which will be remodeled to support (10) extremely low-income individuals with developmental disabilities who are being displaced by the Frances Haddon Morgan Center closure. Tenants will pay 30% of their income for rent and utilities and will receive 24/7 support services from the State Operated Living Alternatives (SOLA).</p>	\$150,000	\$19,500 (plus \$30,500 from Kitsap County HOME and \$100,000 from Bremerton CDBG)
<p>KITSAP COMMUNITY RESOURCES – WEATHERIZATION</p> <p>Funds will be used for weatherization and related minor home repairs to assist low-income households reduce energy costs, improve livability of affordable housing units, improve accessibility, safety and improve the housing stock for the City of Bremerton and Kitsap county.</p>	\$320,000	\$150,000 (plus \$130,102 from Bremerton CDBG)
TOTAL KITSAP COUNTY CDBG		\$631,471

KITSAP COUNTY HOME PROJECTS		
AGENCY/PROJECT/DESCRIPTION	2012 REQUEST	GRC RECOMMENDATION
<p>HOUSING KITSAP – DOWN PAYMENT ASSISTANCE PROGRAM</p> <p>Funds will be used to provide down payment assistance for individuals at or below 80% of Kitsap County median income. Second mortgage loans or mortgage buy downs will allow very low and low income families to purchase homes through the self-help program, leveraging first mortgages.</p>	\$100,000	\$60,000
<p>INLAND EMPIRE RESIDENTIAL RESOURCES – FRANCES HADDON MORGAN REPLACEMENT HOUSING</p> <p>Funds will be used for the acquisition of (3) houses, two in Bremerton and one in Port Orchard, which will be remodeled to support (10) extremely low-income individuals with developmental disabilities who are being displaced by the Frances Haddon Morgan Center closure. Tenants will pay 30% of their income for rent and utilities and will receive 24/7 support services from the State Operated Living Alternatives (SOLA).</p>	\$150,000	\$30,500
<p>KITSAP COMMUNITY RESOURCES – JACKSON VILLAGE</p> <p>Funds will be used to construct eight (8) units of long-term, affordable rental housing (two bedroom cottages) with supportive services located at 3101 Jackson Avenue SE in Port Orchard.</p>	\$200,000	\$180,000
<p>HOUSING RESOURCES BOARD – CHDO OPERATING</p> <p>Funds will be used towards HRB operating and staff costs as it relates to the development of Ferncliff Village, Phase One's 24 units of affordable, homeownership Community Land Trust housing on Bainbridge Island.</p>	\$50,000	\$19,500
TOTAL KITSAP COUNTY HOME		\$290,000

Contingencies

Decrease in County CDBG: If the decrease is greater than \$36,500 then cut HRB Island Home and then Housing Kitsap Single Family Rehab. If the decrease is smaller than \$36,500 then cut Housing Kitsap Single Family Rehab.

Decrease in County HOME: Housing Kitsap Down Payment Assistance Program will be decreased.

Increase in County CDBG: Weatherization will receive increase.

Increase in County HOME: Proportional increase will be given to all recommended projects.

AFFORDABLE HOUSING GRANT PROGRAM OPERATIONS & MAINTENANCE PROJECTS		
AGENCY/PROJECT/DESCRIPTION	2012 REQUEST	GRC RECOMMENDATION
<p>AGAPE – “PROJECT BASED” SISYPHUS II O&M</p> <p>Funds will be used to support the salary and payroll benefits for a .5 FTE maintenance staff person to maintain and repair the interiors and exteriors of the Sisyphus II “Project Based” program which provides 18 permanent affordable housing beds for individuals who are homeless and in recovery.</p>	\$47,414	\$47,414
<p>AGAPE – KOINONIA INN TRANSITIONAL HOUSING O&M</p> <p>Funds will be used to support the operational and maintenance costs of the Koinonia Inn Transitional Housing Program which provides a total of 14 transitional housing beds for six pregnant/parenting women and up to eight children. Costs include salary and benefits for a part-time maintenance staff person in addition to utilities, facility mortgage, pest control, insurance, licenses/fees and supplies.</p>	\$22,308	\$22,308
<p>CATHOLIC COMMUNITY SERVICES – BENEDICT HOUSE O&M</p> <p>Funds will be used to for day to day operating and maintenance expenses incurred (including salaries, benefits, facility maintenance, and other allowable costs) to provide housing and support services for homeless men and homeless men with children.</p>	\$25,000	\$20,000
<p>CATHOLIC HOUSING – MAX HALE CENTER O&M</p> <p>Funds will be used to address building maintenance projects that include replacement and/or repair of 11 windows with frame damage and to pay the wages and benefits of the one existing maintenance employee.</p>	\$105,431	\$25,000 Maintenance Employee
<p>KITSAP COMMUNITY RESOURCES – TRANSITIONAL HOUSING O&M</p> <p>Funds will be used to fund operations and maintenance costs associated with all of KCR’s emergency and transitional housing units which provide housing to homeless and very low income Kitsap County residents. Total number of units includes 12 emergency housing units (6 units at the Family Place and six scattered residential sites) and 23 transitional housing units.</p>	\$70,000	\$64,562

<p>WESTSOUND TREATMENT CENTER – O’HANA, LIGHTHOUSE & OXFORD HOUSE O&M</p> <p>Funds will be used for maintenance and operations of West Sound Treatment Center’s three transitional housing facilities. The O’Hana House provides housing for 8 females recovering from alcohol and/or drug addiction and up to 4 children. The Lighthouse provides housing for 8 adult homeless or “at risk” of homelessness males recovering from alcohol and/or drug addiction. The Oxford Housing provides housing for 8 females recovering from alcohol and other drug addiction. All individuals served are formerly homeless or extremely low-income.</p>	\$69,036	\$50,000
<p>YWCA OF KITSAP COUNTY – EMERGENCY SHELTER & TRANSITIONAL HOUSING O&M</p> <p>Funds will be used to partially fund staff custodial/handyman wages and payroll taxes, food, insurance, utilities, grounds keeping, equipment maintenance, cleaning supplies and large scale repairs for two transitional housing duplexes and the ALIVE Shelter. These facilities provide shelter and housing to survivors of domestic violence and their children.</p>	\$52,000	\$40,000
TOTAL AHGP OPERATIONS & MAINTENANCE		\$269,284

THESE PROJECTS FUNDED BY CITY OF BREMERTON

CITY OF BREMERTON CDBG PROJECTS		
AGENCY/PROJECT/DESCRIPTION	2012 REQUEST	GRC RECOMMENDATION
<p>BOYS & GIRLS CLUBS OF SOUTHWEST PUGET SOUND – BREMERTON TEEN CENTER</p> <p>Funds will be used for the construction costs associated with the development of the Bremerton Teen Center which will address the need for a safe, fun, inclusive, and inspiring place for kids to thrive during non-school hours. The Center will offer a variety of youth services, including recreation, mentoring, education, and nutrition services for the community’s target income young people.</p>	\$200,000	\$40,000
<p>CITY OF BREMERTON, PARKS & RECREATION DEPARTMENT – EVERGREEN PARK ACCESSIBLE PLAY PROJECT</p> <p>Funds will be used to redevelop Evergreen Park’s playground to create an inclusive playground to serve children and adults of all abilities while also enhancing wheelchair accessibility to the new playground and adjoining park facilities.</p>	\$162,000	\$162,000

KITSAP COMMUNITY RESOURCES – WEATHERIZATION Funds will be used for weatherization and related minor home repairs to assist low-income households reduce energy costs, improve livability of affordable housing units, improve accessibility, safety and improve the housing stock for the City of Bremerton and Kitsap county.	\$320,000	\$130,102
TOTAL CITY OF BREMERTON CDBG		\$332,102

CITY OF BREMERTON HOME PROJECTS		
AGENCY/PROJECT/DESCRIPTION	2012 REQUEST	GRC RECOMMENDATION
BREMERTON HOUSING AUTHORITY – BAY VISTA AFFORDABLE HOMEOWNERSHIP Funds will be used to reduce the purchase price of homes in the Bay Vista Development that are being built and sold at a pre-determined price to make the homes affordable to income eligible homebuyers. Each home will have a \$30,000 buy down.	\$330,000	\$150,000
COMMUNITY FRAMEWORKS – BUILT IN BREMERTON Funds will be used to provide \$30,000 down payment assistance for low income families to purchase and fix-up homes in the revitalization target area of the City of Bremerton.	\$300,000	\$90,000
INLAND EMPIRE RESIDENTIAL RESOURCES – FRANCES HADDON MORGAN REPLACEMENT HOUSING Funds will be used for the acquisition of (3) houses, two in Bremerton and one in Port Orchard, which will be remodeled to support (10) extremely low-income individuals with developmental disabilities who are being displaced by the Frances Haddon Morgan Center closure. Tenants will pay 30% of their income for rent and utilities and will receive 24/7 support services from the State Operated Living Alternatives (SOLA).	\$150,000	\$100,000
KITSAP MENTAL HEALTH SERVICES – SCATTERED SITE REHAB OF RENTAL HOUSING Funds will be used to renovate 12 KMHS scattered site houses providing 7 self-contained, and 8 shared kitchen, bathroom and living areas for 15 units in total. Rehabilitation of 15 units assures decent, affordable permanent housing for 36 adults with severe chronic mental illness, with low to very low incomes.	\$612,624	\$451,000
TOTAL CITY OF BREMERTON HOME		\$791,000

Contingencies

Decrease in City CDBG: Weatherization will be decreased.

Decrease in City HOME: Kitsap Mental Health Services – Scattered Site Rehabilitation of Rental Housing will be decreased.

Increase in City CDBG: Boys & Girls Club Bremerton Teen Center will be increased.

Increase in City HOME: Proportional increase will be given to all recommended projects.

PROJECTS NOT FUNDED

AGENCY/PROJECT/DESCRIPTION	2012 REQUEST	GRC RECOMMENDATION
<p>HOUSING KITSAP – CHICO PASSAGE DUPLEX</p> <p>Funds will be used to correct drainage issues by installing an asphalt driveway to divert surface water run off to a public drainage ditch.</p>	<p align="center">\$24,000</p>	<p align="center">\$0</p>
<p>LOW INCOME HOUSING INSTITUTE – CEDAR HEIGHTS APT. REHAB</p> <p>Funds will be used to conduct needed rehabilitation items to the property, as well as replace existing fixtures and appliances with energy efficient models that will significantly reduce operating and maintenance fees for the property which serves low and very low income individuals and families.</p>	<p align="center">\$347,752</p>	<p align="center">\$0</p>
<p>LINDQUIST DENTAL – BREMERTON DENTAL CLINIC</p> <p>Funds will be used for the construction of a new 6-chair dental clinic within the Bremerton Youth Wellness Campus in East Bremerton which will provide dental services annually to 7,000 low income children between the ages 0 – 18.</p>	<p align="center">\$200,000</p>	<p align="center">\$0</p>
<p>MARTHA & MARY HEALTH SERVICES –EMERGENCY GENERATOR</p> <p>Funds will be used for the purchase of an emergency generator for the Silverdale Early Learning Center.</p>	<p align="center">\$30,000</p>	<p align="center">\$0</p>
<p>MARTHA & MARY CHILDREN’S SERVICES – RESIDENT CALL LIGHT SYSTEM UPGRADE FOR HEALTH CENTER</p> <p>Funds will be used to upgrade an out-of-date nurse call light system for residents at the Health Center</p>	<p align="center">\$78,000</p>	<p align="center">\$0</p>

5a. 2012 COORDINATED GRANT APPLICATIONS SUMMARY – PUBLIC SERVICE

KITSAP COUNTY CDBG PROJECTS		
AGENCY/PROJECT/DESCRIPTION	2012 REQUEST	GRC RECOMMENDATION
<p>BREMERTON SERVICES ASSOCIATION – <i>Chuckwagon Meals on Wheels</i></p> <p>Funds will be used to pay the meal cost for home-delivered meal program for homebound, low-income elderly.</p>	\$30,000	\$19,500
<p>CK FOODBANK – <i>Food Distribution</i></p> <p>Funds will be used to pay salaries for existing staff in order to distribute food to food bank clients.</p>	\$20,000	\$13,600
<p>HELPLINE HOUSE – <i>A Coordinated System of Service</i></p> <p>Funds will be used to pay a portion of the salaries of a team of Master’s level social workers whose responsibilities include: client assessment, crisis intervention, case management, volunteer education, referral and advocacy.</p>	\$12,000	\$10,000
<p>KITSAP COMMUNITY RESOURCES – <i>Homeless Child and Family Services</i></p> <p>Funds will be used to support the cost of case management and a portion of the supportive services for families participating in the program. The program serves the needs of low income families in Kitsap who are homeless or at risk of homelessness.</p>	\$160,000	\$47,523 (plus \$76,118 from HHGP)
<p>KITSAP ADULT CENTER FOR EDUCATION – <i>Transitioning Students to Workforce and Education</i></p> <p>Funds will be used toward salaries for this program providing mentoring and goal planning to students going through KACE programs.</p>	\$20,000	\$10,000
<p>KITSAP SEXUAL ASSAULT CENTER – <i>Child Abuse Intervention</i></p> <p>Funds will be used Child & Family Advocate’s salary, who will provide advocacy and crisis intervention services for children and developmentally delayed adults who have been sexually abused and their non-offending family members.</p>	\$37,000	\$15,000

<p>WASHINGTON CASH – Kitsap Microenterprise Development Initiative</p> <p>Funds will be used for microbusiness development services in Kitsap County, including: community outreach, business training courses, business group support facilitation, individual technical assistance, workshops, loans to qualified businesses, and operational costs associated with services and loan fund management.</p>	\$80,000	\$20,000
<p>WEST SOUND TREATMENT CENTER – Behavioral Health Services</p> <p>Funds will be used provide sliding scale services to low income clients, and to purchase some supplies to support the program of intensive, outpatient treatment and recovery services for adults struggling with addiction.</p>	\$27,000	\$10,000
<p>YMCA – Childcare Scholarships</p> <p>Funds will be used to provide scholarships to enable 40 low and very low-income children to participate in YMCA Childcare, including before and after school child care, and summer day camp programs.</p>	\$35,000	\$10,000
<p>YWCA – ALIVE Family Services</p> <p>Funds will be used to support partial staffing costs of one FT Program manager and one family advocate. Program provides family assessments, advocacy/case management, information and referral, and supportive services for survivors of domestic violence and other services.</p>	\$25,000	\$14,000
<p>TOTAL KITSAP COUNTY CDBG PUBLIC SERVICE AND ECONOMIC DEVELOPMENT</p>		\$169,623

Contingencies

If there is a decrease in County CDBG funds: Proportional cut to all agencies down to minimum of \$10,000.

If there is an increase in County CDBG funds: Proportional increase to all agencies.

HOMELESS HOUSING GRANT PROJECTS		
AGENCY/PROJECT/DESCRIPTION	2012 REQUEST	GRC RECOMMENDATION
<p>AGAPE – Case Management Sisyphus II</p> <p>Funds will be used to support the salaries and related payroll expenses of 1.5 case managers.</p>	\$58,967	\$19,500

<p>BREMERTON HOUSING AUTHORITY – <i>Rental Assistance</i></p> <p>Funds will be used to provide rental assistance to chronically mentally ill clients who have just left an institution, correctional facility, or are homeless. Partnership with KMHS allows state funds that would go towards housing, to instead support critical mental health services for these clients.</p>	\$135,450	\$70,000
<p>CATHOLIC COMMUNITY SERVICES – <i>Benedict House Operations</i></p> <p>Funds will be used to pay day-to-day expenses, including salaries, benefits, facility maintenance, and other (allowable) costs to providing housing and support services for homeless men and homeless men with children.</p>	\$92,000	\$45,500
<p>CATHOLIC HOUSING SERVICES – <i>Max Hale Resident Services Coordinator</i></p> <p>Funds will be used to cover the salary, benefits and other costs related to Resident Services Coordinator position.</p>	\$50,631	\$10,000
<p>HOPE IN CHRIST MINISTRIES – <i>Oasis Youth Continuum of Services</i></p> <p>Funds will be used to help prevent and end youth homelessness through a continuum of services, including: street and school outreach, drop-in center services, case management, job counseling, tutoring and other services..</p>	\$108,540	\$69,961 (plus \$30,039 from Bremerton CDBG)
<p>HOUSING KITSAP – <i>Housing Stabilization Program</i></p> <p>Funds will be used to stabilize homeless and those at risk of homelessness through a revolving loan fund to assist those in danger of losing their housing, rental assistance and supportive housing to stabilize the homeless. Funding will allow program to continue through December, 2012</p>	\$200,000	\$113,750
<p>HOUSING RESOURCES BOARD – <i>Rental Assistance</i></p> <p>Funds will be used to provide rental assistance to the very low income residents of HRB's properties.</p>	\$60,000	\$48,000
<p>KITSAP COMMUNITY RESOURCES – <i>Homeless Child and Family Services</i></p> <p>Funds will be used to support the cost of case management and a portion of the supportive services for families participating in the program. The program serves the needs of low income families in Kitsap who are homeless or at risk of homelessness.</p>	\$160,000	\$76,118 (plus \$47,523 from County CDBG)

<p>KITSAP RECOVERY CENTER – <i>Emergency Housing Program</i></p> <p>Funds will be used to provide case management, outreach and key supportive services by dedicating four of the KRC's beds to male homeless, and 2 to female homeless, for clean and sober shelter for up to 30 days. Funds will cover beds and meals at rate of \$60/day.</p>	\$131,760	\$87,500
<p>NORTH KITSAP FISHLINE – <i>Homeless Support Services</i></p> <p>Funds will be used for providing critical assistance to the homeless through intake and case management, temporary housing, and first month rent for permanent housing.</p>	\$42,500	\$26,000
<p>SALVATION ARMY – <i>Salvation Army Social Services</i></p> <p>Funds will be used to 1) assist the homeless in a number of ways that will enable them to get back on their feet, and 2) prevent homelessness through partial rental assistance.</p>	\$50,000	\$16,500
<p>WESTSOUND TREATMENT CENTER – <i>Case Management</i></p> <p>Funds will be used to cover cost of wages and health benefits for 2 FT case managers for O'hana House (women) and Lighthouse (men) housing programs for chemically dependent clients transitioning from homelessness to clean and sober self sufficiency and recovery.</p>	\$72,000	\$22,000
TOTAL HHGP		\$604,829

THESE PROJECTS FUNDED BY CITY OF BREMERTON

CITY OF BREMERTON CDBG PROJECTS		
AGENCY/PROJECT/DESCRIPTION	2012 REQUEST	GRC RECOMMENDATION
<p>BOYS & GIRLS CLUB – <i>Kitsap Program Operations</i></p> <p>Funds will be used to provide after school and summer programs to youth, ages 6-13. Program includes homework help, tutoring, nutrition education, opportunities for community service, regular physical activity.</p>	\$15,000	\$10,000
<p>BREMERTON FOODLINE – <i>Agency Salaries</i></p> <p>Funds will be used to support four part-time salaries, including Executive Director, Supervisor of Operations, Office Manager/Outreach Coordinator, and Driver.</p>	\$22,000	\$13,600

<p>HOLLY RIDGE CENTER – <i>Partnership for Children at Risk</i></p> <p>Funds will be used to further efforts in community collaboration by extending partnership with Olympic College Sophia Bremer Child Development Center whereby children with special needs will receive quality care, and Early Childhood Education students will receive training.</p>	\$14,875	\$10,000
<p>HOPE IN CHRIST MINISTRIES – <i>Oasis Youth Continuum of Services</i></p> <p>Funds will be used to help prevent and end youth homelessness through a continuum of services, including: street and school outreach, drop-in center services, case management, job counseling, tutoring and other services..</p>	\$108,540	\$30,039 (plus \$69,961 from HHGP)
<p>YWCA – <i>Legal Advocacy</i></p> <p>Funds will be used provide no-cost legal advocacy, safety planning, domestic violence response services, and Washington State Certified Victims’ Services Training. Funds will pay for partial salaries and benefits for one FT Program Director and one FT legal advocate.</p>	\$25,000	\$13,000
TOTAL CITY OF BREMERTON PUBLIC SERVICE		\$76,639

Contingencies

If there is a decrease in City CDBG funds: Proportional cut to all agencies down to minimum of \$10,000.

If there is an increase in City CDBG funds: Proportional increase to all agencies.

PROJECTS NOT FUNDED		
AGENCY/PROJECT/DESCRIPTION	2012 REQUEST	GRC RECOMMENDATION
<p>BREMERTON RESCUE MISSION – <i>Permanent Overnight Shelter</i></p> <p>Funds will be used for operations and to cover some staffing costs of a permanent overnight shelter. Shelter will provide a hot evening meal, showers, laundry services and referrals to other community agencies.</p>	\$80,000	\$0
<p>HOPE IN CHRIST MINISTRIES – <i>Teen Shelter</i></p> <p>Funds will be used primarily to fund the lead counselor position at Oasis Teen Shelter. Lead Counselor is the key on-site staffing position for the supervision of the youth at the shelter. Some funds will also be used to cover supplies, repairs, utilities, taxes and insurance.</p>	\$59,580	\$0

<p>HOPE IN CHRIST MINISTRIES – <i>Job Training Program</i></p> <p>Funds will be used to fund the Director of Job Training Programs position, as well as expenses such as training supplies, youth scholarships, L&I insurance, and youth transportation costs. Program helps 18-25 year old street and homeless youth develop hireable job skills and professional work ethic in order to obtain living-wage, permanent employment.</p>	\$54,180	\$0
<p>KITSAP ECONOMIC DEVELOPMENT ALLIANCE – <i>Selling to Government</i></p> <p>Funds will be used to provide technical assistance to companies and individuals on doing business with the federal government.</p>	\$25,000	\$0
<p>KITSAP HUMANE SOCIETY – <i>Low-Income Vet Services</i></p> <p>Funds will be used to support an expanded low-cost veterinary services program, including spay/neuter, vaccinations, and microchips. Funds will be used for veterinary and vet tech salaries, supplies, and program promotion.</p>	\$25,000	\$0
<p>OLYMPIC COLLEGE FOUNDATION – <i>SING (Students in Need Group)</i></p> <p>Funds will be used to support the salary of one SING staff member providing services to high-risk, under-represented, low-income students such as: assessment, guidance, support.</p>	\$30,972	\$0
<p>RMH SERVICES – <i>Untreated Mentally Ill</i></p> <p>Funds will be used cover benefits and travel costs for Executive Director, janitor fees, rent and utilities, insurance and office expenses for program addressing the needs of the very hard-to-treat mentally ill.</p>	\$35,000	\$0
<p>SOUNDWORKS JOB CENTER – <i>No-Fee Job Referral</i></p> <p>Funds will be used to provide 800 hours of job referral and placement coordination, including: acquiring job listings, working with over 300 low-income individuals, and assisting with resume and job preparations.</p>	\$10,000	\$0
<p>WEAVER FOUNDATION – <i>Georgia's House</i></p> <p>Funds will be used to sustain operational functions at Georgia's House womens' shelter including wages, director compensation, personal needs for residents, and purchase of 2 computers to aid residents in skill development. Georgia's house provides a home for women transitioning from homelessness.</p>	\$100,000	\$0

WEST SOUND TREATMENT CENTER – *Forward Bound*

Funds will be used to partially support the cost of case management for the program, which provides “housing first” permanent housing to 14 high-needs homeless families in Bremerton.

\$15,000

\$0



Kitsap Regional Coordinating Council

5b .Countywide Multi-Modal Transportation Plan September 27, 2011

Phase 1: 3rd Quarter 2011 → 2012 [\$190,000]

Gather & Analyze transportation system information: KRCC Staff Time
KRCC Sharepoint
TransTAC

Hire Transportation Planner w/ Transit Experience
Contract for BI survey research re: SR 305

Demographic Analysis: Identify other possible agency participants
Identify information needs: Kitsap Transit
TransTAC
Health District
Planning Directors
Other agencies e.g.
Housing Kitsap

Identify / retain consultant

Develop Toolbox: Range of Solutions & Components

1. Level of Service requirements/methods (all modes)
2. Density Strategies on Corridors
3. CTR Strategies
4. Consistent Road Standards w/i UGA's
5. System Performance Standards
6. Local Funding Strategies e.g. impact fees, parking fees, business taxes
7. Park & Ride Strategies
8. Parking & Other TDM Strategies

Appropriate
staff +
expert
working
groups

Document & Package

➤ In-depth Workshop with City Councils and Planning Commissions

Scope Phase 2: KRCC Transportation Committees

Project Funding

Phase 1: \$190,000

\$75,000 = Kitsap Transit
\$125,000 = STP

Phase 2: Currently unfunded

Phase 2: 2013 [currently unfunded]

Based on discovered data gaps (current & future)
Based on funding availability

Determine scope of Transportation Plan
Determine extent of Public Involvement

30,000 foot view e.g.
Identify corridors
(freight, multi-modal, routed service)

Principles of corridor development
countywide

3,000 foot view e.g.
Prioritize corridors and/or specific
improvements

Principles of corridor development
for individual corridors

300 foot view e.g.
Transportation Modeling



Kitsap Regional Coordinating Council

Chair
Mayor Patty Lent
City of Bremerton

Vice-Chair
Commissioner Josh Brown
Kitsap County

Commissioner Charlotte Garrido
Commissioner Rob Gelder
Kitsap County

Council Member Will Maupin
Council Member Dianne Robinson
Council Member Greg Wheeler *
City of Bremerton

Council Member Kim Brackett
Council Member Hilary Franz
Council Member Kirsten Hytopoulos *
City of Bainbridge Island

Mayor Lary Coppola
Council Member Carolyn Powers
Council Member Jim Colebank *
City of Port Orchard

Mayor Becky Erickson
Council Member Linda Berry-Maraist *
City of Poulsbo

Council Chair Leonard Forsman
Rob Purser *
*Suquamish Tribe****

Council Chairman Jeromy Sullivan
Council Member Kelly Baze *
*Port Gamble S'Klallam Tribe****

Commissioner Bill Mahan
Commissioner Roger Zabinski *
Port of Bremerton

Captain Mark Olson
Tom Danaher, PAO *
*Naval Base Kitsap***

Mary McClure
*Executive Management
McClure Consulting LLC*

* *Alternate*
** *Ex Officio Member*
*** *Associate Member*

P.O. Box 1934
Kingston, WA 98346
360-377-4900 (voice)
360-297-7762 (fax)
www.KitsapRegionalCouncil.org

5c. Countywide Planning Policy Revisions: Schedule for Adoption & Ratification *September 27, 2011*

Dec 8 ✓	Submit for 60 day Agency Review: WA State agencies; KRCC Member Agencies (informal ~ ID “sticky spots”); PSRC
Jan 25 ✓	KRCC Executive Board: Identify any “sticky spots” from each member jurisdiction
Jan 27 ✓	Public Hearing (<i>Quorum of KRCC Exec. Board req'd</i>)
Jan 28 ✓	End Public Comment Period
Feb 3, Feb 16, March 2 ✓	Planning Directors: Review public & state agency comments; prepare final proposed CPP revisions
March 22 ✓ May 24 ✓	KRCC Executive Board: Recommend proposed revisions to Kitsap County for adoption & to jurisdictions for ratification
3 rd 4 th Qtr, 2011	Kitsap County: SEPA checklist, public hearing, Planning Commission, adopt by ordinance (est. 60 days)
	SEPA Appeal period: June – July 15 ✓ September <i>Note: Kitsap County Public Hearing: September 12 ✓</i> September <i>October 24: BoCC adopts/rejects</i> September <i>October 25-December 15: Cities & Tribes ratify/reject</i> <i>Note: 90 day ratification period</i>

→ Please see attached KRCC comment letter to Kitsap County re:

1. Population Distribution: schedule & analyses
2. Element B-6 & 7: FCC's
3. Adding text note re: Kitsap County SEPA responsibility to Appendix A



Kitsap Regional Coordinating Council

Chair
Mayor Patty Lent
City of Bremerton

Vice-Chair
Commissioner Josh Brown
Kitsap County

Commissioner Charlotte Garrido
Commissioner Robert Gelder
Kitsap County

Council Member Will Maupin
Council Member Dianne Robinson
Council Member Greg Wheeler *
City of Bremerton

Council Member Kim Brackett
Council Member Hilary Franz
Council Member Kirsten Hytopoulos*
City of Bainbridge Island

Mayor Lary Coppola
Council Member Carolyn Powers
Council Member Jim Colebank *
City of Port Orchard

Mayor Becky Erickson
Council Member Linda Berry-Maraist *
City of Poulsbo

Council Chair Leonard Forsman
Rob Purser *
*Suquamish Tribe****

Council Chair Jeremy Sullivan
Council Member Kelly Baze
*Port Gamble S'Klallam Tribe****

Commissioner Bill Mahan
Commissioner Roger Zabinski *
Port of Bremerton

Captain Pete Dawson
Tom Danaher, PAO *
*Naval Base Kitsap***

Mary McClure
*Executive Management
McClure Consulting LLC*

* *Alternate*
** *Ex Officio Member*
*** *Associate Member*

P.O. Box 1934
Kingston, WA 98346
360-377-4900 (voice)
360-297-7762 (fax)
www.KitsapRegionalCouncil.org

Kitsap County Board of Commissioners:

Josh Brown
Charlotte Garrido
Robert Gelder

September 12, 2011

Re: Recommended Revisions to Kitsap Countywide Planning Policies

Through a careful, iterative multi-jurisdictional coordinating process spanning over 2 years, the Kitsap Regional Coordinating Council has developed extensive revisions to the Kitsap Countywide Planning Policies, to reflect the regional *Vision 2040* and local issues within our county. The revisions now come to you for adoption, as recommended by the KRCC Executive Board. I am commenting on behalf of the KRCC on three elements of the recommended revisions:

1. Updating the population distribution to 2030 (Appendix B-1) as required by the Puget Sound Regional Council: The KRCC determined that we are collectively on the cusp of new data and analyses regarding population distribution. In order to meet the PSRC requirements for consistency with *Vision 2040*, we agreed to extend the existing population distributions (which are within the WA State Office of Financial Management target ranges for 2030) to 2030 with the policy proviso that it will be reviewed and extended as soon as relevant analyses are complete, and in any case, by mid-2013, to form the context for local Comprehensive Planning. Below is the text from Appendix B-1 expressing that intent:

Appendix B-1: Population Distribution 2005 - 2025-2030

[The following projections are based upon preliminary estimates of 2030 population distributions for Kitsap County and Cities. Kitsap County and Cities expect to update this 2030 population distribution and extend it to 2035, based upon new information and analyses, including 2010 Federal Census data and WA State Office of Financial Management population projections, the VISION 2040 regional growth strategy, updated Buildable Lands Analysis, and potentially revised UGA/non-UGA growth split, as described below. The County and Cities shall refine and complete the 2035 population distribution for approval by the Kitsap Regional Coordinating Council by June 30, 2013, so that it may form the basis for 2014 Comprehensive Plan updates, including housing and employment projections.](#)

Subsequently, (1) the WA State Growth Management Hearings Board has remanded the Kitsap urban/rural population distribution and UGA boundaries, with reference to the 2025 Population Distribution in the Countywide Planning Policies, and (2) WA State has extended the deadline for Comprehensive Plan Updates to 2016, recognizing that local jurisdictions' planning staffs are sorely stretched due to the economic downturn and resulting staff cutbacks. These developments may bear on the recommended revisions before you, pending clarification of the GMHB remand and review of work programs for 2012-2013.

Request: Seek further clarification and review of this section.

2. Element B. Urban Growth Areas, 6 & 7: Referring to Fully Contained Communities and urban-scale growth outside of Urban Areas: This section has been the subject of intense debate among our communities. The KRCC Planning Directors Forum developed two policy options for the KRCC Executive Board (*see attached*). Discussion finally focused on which alternative more effectively expressed the policy ~ outright prohibition of FCC's or their heavily caveated allowance. The Executive Board determined that outright prohibition is the more clear approach, noting that it could be re-visited in the future; that is embodied as B-6 & 7 before you.

Subsequently, two of the Kitsap Cities have determined that the outright prohibition for various reasons is a strong concern for their City Councils that are charged with ratification of the County's adoption action, while the second option originally presented would be acceptable.

Request: Substitute Option B for the language in B-6 & 7.

3. Amend Appendix A to clarify that Kitsap County performs the SEPA Review for proposed revisions to the Countywide Planning Policies, as shown below.

<p style="text-align: center;">Kitsap County Adoption by Ordinance</p> <ul style="list-style-type: none">• SEPA Review• Kitsap County Public Hearing• Kitsap County Ordinance (may change document)

Thank you for your consideration of these three issues.

Sincerely,

Mayor Patty Lent, City of Bremerton
Chair, Kitsap Regional Coordinating Council

Option 1:

6. ~~Fully Contained Communities and~~ Master Planned Resorts

A ~~Master Plan~~ review process and decision criteria for ~~fully contained communities and~~ master planned resorts should be incorporated in the County's comprehensive plan, must reflect the standards and requirements in the GMA and in addition must address the following:

a. Provision of necessary public facilities, including but not limited to parks, schools, and public safety facilities ~~should be provided~~ within or along with the development, consistent with adopted capital facility and level of service standards;

b. Future assessment of adverse impacts to public infrastructure, nearby communities, adjacent rural areas, environmental resources, and designated resource lands. Such impacts should first be avoided, second minimized, and third mitigated;

c. Provisions for review of such developments through the Kitsap Regional Coordinating Council process, in addition to other procedural requirements.

~~Under The Growth Management Act (RCW 36.70A.350), fully contained communities (FCCs) may be considered, provided that a portion of the twenty year population forecast is reserved for & subsequently distributed to the FCC. The GMA requires that FCCs provide for a mix of uses that would provide jobs, housing, & public facilities and services to support a long term residential population.~~

The Growth Management Act GMA (RCW 36.70A.360) also allows the consideration of proposed master planned resorts (MPR's) outside of Urban Growth Areas for shorter-term residential uses. Master planned resorts are described as self-contained, fully integrated planned developments in areas with significant natural amenities.

7. Fully Contained Communities are prohibited in Kitsap County.

Option 2:

6. Policies for Growth Outside of Urban Growth Areas: Fully Contained Communities, National Historic Towns, and Master Planned Resorts

a. A ~~Master Plan~~ review process and decision criteria for fully contained communities, *national historic towns*, and master planned resorts should be incorporated in the County's comprehensive plan, must reflect the standards and requirements in the GMA and in addition must address the following:

~~a.~~ *i. Provision of* necessary public facilities, including but not limited to parks, schools, and public safety facilities ~~should be provided~~ within or along with the development, consistent with adopted capital facility and level of service standards;

~~b.~~ *ii. Future assessment of adverse* impacts to public infrastructure, nearby communities, adjacent rural areas, environmental resources, and designated resource lands. *Such impacts* should first be avoided, second minimized, and third mitigated;

~~c.~~ *iii.* Provisions for review of such developments through the Kitsap Regional Coordinating Council process, in addition to other procedural requirements.

b. Consistent with guidance provided in VISION 2040, the Kitsap Regional Coordinating Council shall avoid the establishment of a Fully Contained Community (FCC). Only if it is found necessary to accommodate future urban population growth, may the Kitsap Regional Coordinating Council recommend the creation of an FCC and a corresponding new community reserve population. Any such designation shall be fully consistent with all Countywide Planning Policies establishing new Urban Growth Areas (Elements B3 and B5) and RCW 36.70A.350(2), which, in part, requires that a new community reserve population be established no more than once every five years as a part of the designation or review of Urban Growth Areas and that the Urban Growth Areas shall be accordingly offset.

In addition, the following shall be included in any County Comprehensive Plan requirements governing FCCs:

i. a phasing plan that monitors and requires concurrent development of commercial and employment uses with residential development, to insure that the community is fully contained;

Under the Growth Management Act (*RCW 36.70A.350*), fully contained communities (FCCs) may be considered, provided that a portion of the twenty-year population forecast is reserved for & subsequently distributed to the FCC. The GMA requires that FCCs provide for a mix of uses that would provide jobs, housing, & public facilities and services to support a long-term residential population.

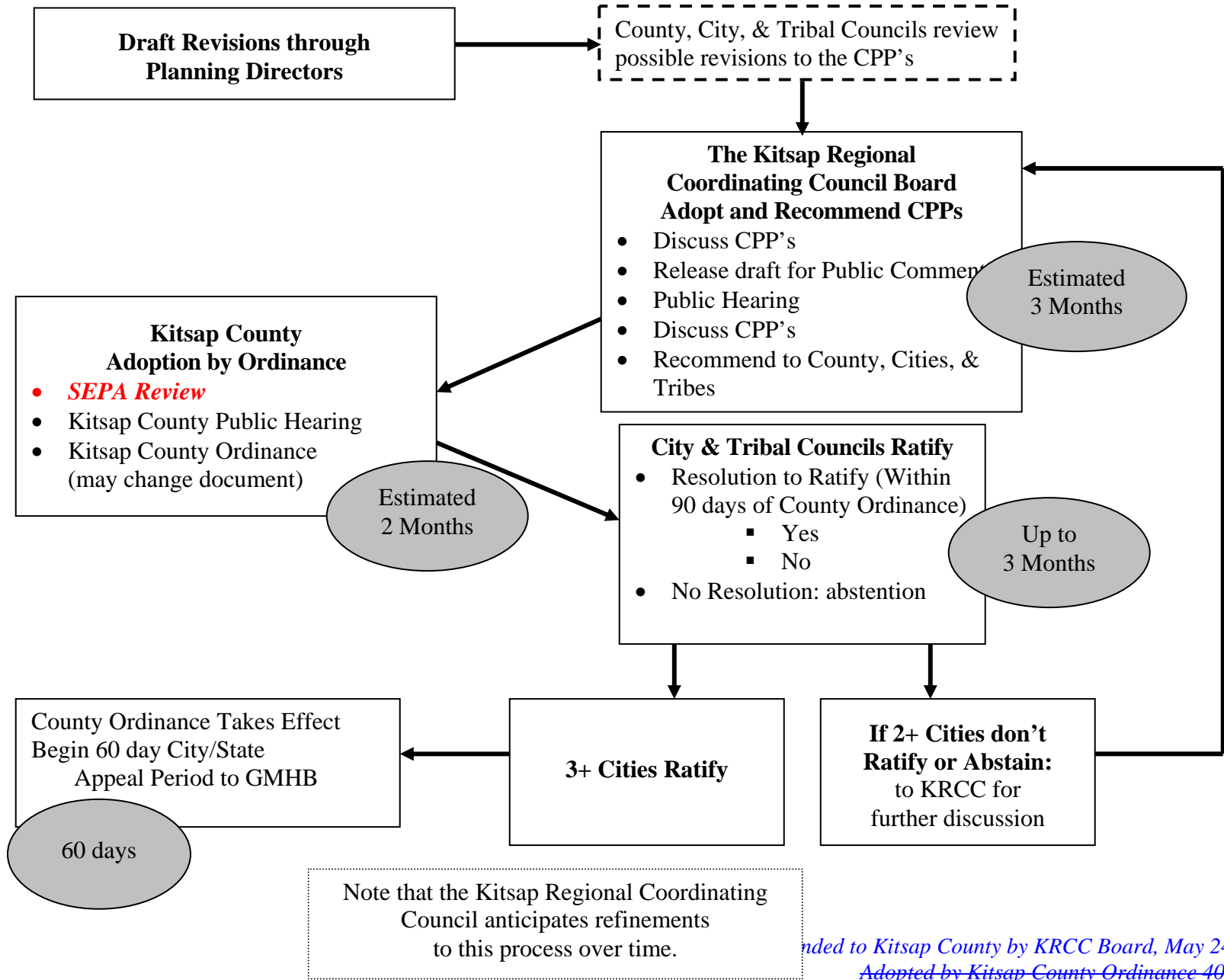
The GMA (*RCW 36.70A.360*) also allows the consideration of proposed master planned resorts (MPR's) outside of Urban Growth Areas for shorter-term residential uses. Master planned resorts are described as self-contained, fully integrated planned developments in areas with significant natural amenities.

The GMA allows for areas with a federal landmark designation to be developed as National Historic Towns (RCW 36.70A.520). The designation may allow urban services in rural areas dependent upon historic development pattern. Its boundaries and land uses must be consistent with those over the course of its history, but not specific to any point in time.

Vision 2040 policies state that new FCC's are to be avoided.

- ii. a mechanism to insure that the timing of the development components will be fully regulated by the phasing plan;
 - iii. a substantial public benefit.
- c. As Vision 2040 requires comprehensive review and consideration of the regional impacts of any proposed Fully Contained Community, the County shall forward the proposal to adjacent counties, the Puget Sound Regional Council, and the Kitsap Regional Coordinating Council for review at the earliest possible point in the process. The Kitsap Regional Coordinating Council shall review the proposal for regional impacts to the following:
- i. the regional growth strategy as included in Vision 2040;
 - ii. the split in population growth between the countywide urban and rural areas;
 - iii. other elements of the Countywide Planning Policies.

**Appendix A:
Kitsap Countywide Planning Policy Ratification Process**



Note that the Kitsap Regional Coordinating Council anticipates refinements to this process over time.

*Adopted to Kitsap County by KRCC Board, May 24, 2011
Adopted by Kitsap County Ordinance 403-2007
November 19, 2007*

Blue: Denotes revisions to the 2007 Adopted Kitsap CPP's proposed by the KRCC on May 24, 2011.
Red: Denotes revisions subsequent to Kitsap County Public Hearing on September 12, 2011.

Appendix B-1: Population Distribution 2005 - 2025 ~~2030~~ 2025

The following projections are based upon preliminary estimates of 2030 population distributions for Kitsap County and Cities. Kitsap County and Cities expect to update this ~~2030~~ 2025 population distribution and extend it to 2035, based upon new information and analyses, including 2010 Federal Census data and WA State Office of Financial Management population projections, the VISION 2040 regional growth strategy, updated Buildable Lands Analysis, and potentially revised UGA/non-UGA growth split, as described below. The County and Cities shall refine and complete the 2035 population distribution for approval by the Kitsap Regional Coordinating Council by June 30, 2013, so that it may form the basis for 2014 the next cycle of Comprehensive Plan updates, including housing and employment projections.

Population Distribution 2005 through 2025	2000 Population	+ New Population	= Total in 2025 2030 2025
Bremerton City ²	37,259	14,759	52,017
East UGA ¹	5,412	2,210	7,622
West UGA ¹	3,229	2,017	5,246
Gorst UGA ¹	154	73	227
SKIA ²	68	- 68	0
Bainbridge Island City ²	20,308	8,352	28,660
Poulsbo City ²	6,813	3,739	10,552
UGA ²	901	3,355	4,256
Port Orchard City ^{2,5}	8,934	11,624	20,558
UGA ²	11,570	9,709	21,279
UGA Population			
Central Kitsap UGA ¹	21,743	8,733	30,476
Silverdale UGA ¹	15,276	8,059	23,335
Kingston UGA ³	1,871	3,135	5,006
UGA Population	133,537 58%	75,697 76%	209,234 63%
Non-UGA Population	98,432 42%	23,905 24%	122,337 37%
<i>Total Countywide Population</i>	231,969	99,602	331,571
OFM Projection through:		2025	2030
	Low	268,573	245,397
	Intermediate	331,571	314,610
	High	412,391	396,879

¹ Based on PSRC Model

² Based on City and/or County Comprehensive or Sub-area planning

³ Target to be substantiated by further analysis and/or Sub-area planning

⁴ Office of Financial Management official estimate

⁵ Includes South Kitsap annexed McCormick Woods area

Population distribution will be reviewed through the Kitsap Regional Coordinating Council process every five years. The review will include an analysis of the Cities' and County's progress in achieving target distributions. If the 76% UGA target mentioned above for new population growth and the overall population targets are met or exceeded, the target for new population will revert to five sixths (83%), as per the revised Countywide Planning Policies adopted by Kitsap County Ordinance #258-01 on August 20, 2001. Otherwise, the target may be reaffirmed or explicitly modified.

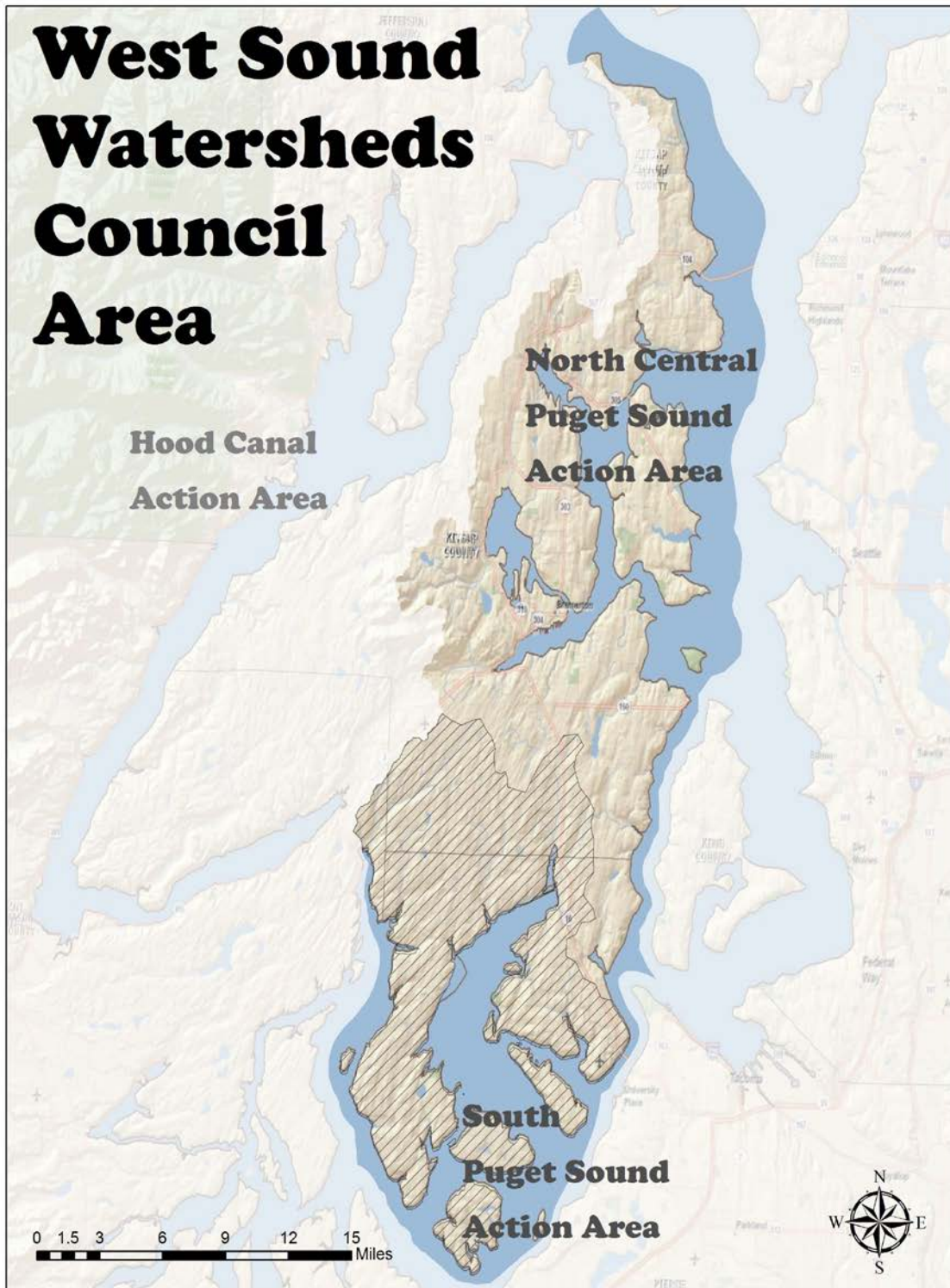


5d. Local Integrating Organization (LIO) Planning

September 27, 2011

- Summary Overview of Work-to-Date:
 - Geographic Area of Focus
 - Connection to existing Puget Sound Partnership structure
 - Forming the West Sound LIO
 - Core Group
 - Steering Committee
 - Draft LIO Proposal
 - Proposed participants
 - Current planning grant:
 - \$75,000
 - Available July 1, 2011
 - Housing the Planning Grant admin & staff: Hood Canal Coordinating Council ???
 - Advisory Group to Review Coordinating Process as it evolves
 - Potential role of the KRCC in the LIO:
 - Planning Directors Forum
 - Public Works Directors Group
 - KRCC Director participate in Advisory Group re: Coordinating Process
- Next steps

West Sound Watersheds Council Area



Action Area (solid) and West Sound Watersheds Council (solid + hatched) boundaries

DRAFT
West Sound Local Integrating Group Proposal
Version 7

**THIS MEMO IS MEANT SOLELY TO STIMULATE DISCUSSION RE: THE
FORMATION OF AN LIO FOR THE WEST SOUND**

Introduction

This memo proposes a model to implement a West Sound local integrating organization for the North-Central Action Area (see map). The memo is meant to capture the ideas of the Steering Committee and their recommendations for LIO formation.

Background

There are many groups in the West Sound Action Area currently executing work to recover Puget Sound. In order to leverage and streamline these efforts, which will help increase efficiency and secure funding, parties must better work together to tackle the most pressing issues and sequence implementation efforts.

The West Sound Action Area is a unique geography consisting of the east side of the Kitsap Peninsula, including portions of Kitsap County and Pierce County, 5 cities, and a mix of urban and rural landscapes. This Action Area has the highest percentage of urban area within its boundaries compared to all other Action Areas. Multiple players are involved with and operate in this Action Area that focus on protection and restoration efforts as they relate to Puget Sound.

Rather than forming an LIO with representatives from all these entities, which would likely be duplicative, unmanageable and ineffective, it was determined that establishing a small, broadly representative caucus group would be most appropriate to help tie the work together of various groups in the West Sound. This group would seek to connect with and build on the work of existing functioning groups and avoid creating another layer of process.

To do this, a steering committee was formed to convene a broad group of multiple interests throughout the action area to present and obtain feedback on the caucus group approach. The proposed LIO and its structure reflect this group's thinking.

Purpose of the Local Integrating Organization

To serve as a forum to foster communication and collaboration in the West Sound to implement the priority strategies identified in the Puget Sound Partnership's Action Agenda, as well as to address other natural resource issues. This will be achieved largely through engaging participants in four key areas (see attached diagram for proposed structure and participants):

- Government and Regulatory
- Ecosystem Restoration and Protection

- Public Health, Education and Outreach
- Private Sector and Commerce

Function and Scope

- Build strong community support and represent constituent interests
- Invigorate Action Area coordination, communication, and integration
- Work cooperatively to implement strategic actions in the Action Agenda
- Advise PSP on local priorities and resource allocation
- Assess, clarify, and sequence actions in the Action Agenda that would make the most difference to recovery of Puget Sound in the West Sound AA
- Capitalize on funding opportunities and develop funding strategies in line with local priorities
- Provide assistance to enhance implementation of local work
- Monitor and adaptively manage group activities based on developing performance measures for the LIO
- Update and advise the West Sound Action Area representative to the ECB
- Make recommendations to change the Action Agenda

Operating Guidelines

The following are proposed guidelines for how the group might discuss issues and operate to provide advice and recommendations to the PSP:

1. Meeting and Ground rules
 - a. Focus on reviewing and acting on timely information and ideas brought forward by workgroups/subcommittees, giving further direction to work groups/subcommittees, and crafting outcomes in the form of advice and recommendations to the PSP
 - b. Meet quarterly, prior to ECB meetings
 - c. Meeting based on meeting agendas and materials distributed in a timely manner
 - d. Be planned and managed by the Chair in consultation with supporting staff and work groups/subcommittees
 - e. Be chaired by the West Sound AA ECB representative, or other Caucus member as designated by the group
 - f. Help build work plans, tasks, and deliverables

2. Creation of workgroups and subcommittees

The group may establish smaller workgroups to be tasked with addressing specific priority action strategies:

- a. Protect and restore terrestrial and freshwater ecosystems
 - b. Protect and restore marine and near-shore ecosystems
 - c. Reduce and control the sources of pollution to the Sound
 - d. Sustain, coordinate, and adapt Puget Sound recovery efforts
 - e. Base work on the best scientific information, including from tribal, local, state, and federal governments, as well as PSP staff and the Science Panel
3. Decisions: the group will strive to make decisions based on consensus. In the absence of consensus, the group will vote and the majority vote will prevail. Minority opinions, along with reason for dissent, will be noted in any advice going to the PSP.

Membership

The Caucus Group will be composed of representatives specializing in the four key areas of focus listed above. Please see attached diagram for potential participating groups.



Target topic/issue areas will be comprised of representatives from the LIO to serve on workgroups to fulfill the tasks described in the LIO's work plan. This will help connect the various sectors in order to set priorities, even though in many ways collaborative efforts are already under way.

Membership:

The caucus group will be composed of representatives specializing in the four target topic/issues areas. There will likely be cross-over between groups. Participating groups may include:

Government & Regulatory:

Federal: Navy

Local governments: Cities (Gig Harbor, Port Orchard, Bremerton, Poulsbo, Bainbridge Island),
Counties (Pierce, Kitsap), Tribes (Suquamish, Port Gamble S'Klallam)

Planning Directors

Public Works Directors

Transportation Directors

Parks

Ports

Water Purveyors Association of Kitsap County and similar counterpart in Pierce County

Restoration & Protection:

Puget Sound Partnership (including West Sound rep to ECB)

Salmon Recovery/WSWC (includes NGOs/citizens)

Tribes

Kitsap and Pierce Conservation Districts

Parks

Public Health (see above)

Kitsap Surface and Storm Water Management, Pierce Surface Water Management
Science

Land Trusts (BILT and GPC)

Public Health, Education & Outreach:

KEEP/ECONet

KGI Watershed Council

Kitsap Peninsula Clean Runoff Collaborative

WSU Extension (Kitsap and Pierce)

Kitsap Surface and Storm Water Management, Pierce Surface Water Management

Water Purveyors Association of Kitsap County and similar counterpart in Pierce County

Public Health (Kitsap Health District, Tacoma/Pierce County Health Department)

Wastewater Utilities (Counties and Cities)

Economic Issues

Private businesses

Forestry

Tourism

Kitsap/Pierce Home Builders Association

NGOs/citizens

Kitsap Economic Development Association

Kitsap Community and Agriculture Alliance

Kitsap County Food/Farm Policy Council

Chambers of Commerce

Others: Hood Canal Coordinating Council

Newspapers (Kitsap Sun, Peninsula Gateway, Kitsap Newspaper Group)



Study Session Materials





Kitsap Regional Coordinating Council

Chair
Mayor Patty Lent
City of Bremerton

Vice-Chair
Commissioner Josh Brown
Kitsap County

Commissioner Charlotte Garrido
Commissioner Robert Gelder
Kitsap County

Council Member Will Maupin
Council Member Dianne Robinson
Council Member Greg Wheeler *
City of Bremerton

Council Member Kim Brackett
Council Member Hilary Franz
Council Member Kirsten Hytopoulos*
City of Bainbridge Island

Mayor Lary Coppola
Council Member Carolyn Powers
Council Member Jim Colebank *
City of Port Orchard

Mayor Becky Erickson
Council Member Linda Berry-Maraist *
City of Poulsbo

Council Chair Leonard Forsman
Rob Purser*
Suquamish Tribe***

Council Chair Jeremy Sullivan
Council Member Kelly Baze
Port Gamble S'Klallam Tribe***

Commissioner Bill Mahan
Commissioner Roger Zabinski *
Port of Bremerton

Captain Pete Dawson
Tom Danaher, PAO *
Naval Base Kitsap **

Mary McClure
Executive Management
McClure Consulting LLC

* Alternate
** Ex Officio Member
*** Associate Member

P.O. Box 1934
Kingston, WA 98346
360-377-4900 (voice)
360-297-7762 (fax)
www.KitsapRegionalCouncil.org

KRCC Executive Board Study Session September 27, 2011

Developing the 2012 Legislative Agenda

During your July 26th Study Session, Mayor Lent suggested, and we did, starting the legislative agenda development process with an initial query to you:

What are the top 4 or 5 legislative issues you'd like to see on the 2012 Legislative agenda?

August Results: We heard from only one Board member and one of our partners (thank you, Kim Brackett and Scott Daniels!)

From Kim:
Transportation
Environment & Energy
Education
Health
Housing & Human Services

From Scott: [initial thinking]
Protect existing discretionary funding for local health jurisdictions.

Create a stable, dedicated, state funding source for local public health as soon as realistically possible.

Create additional local option revenues for counties (some of which could potentially be used to support public health and the work of other agencies who align with our mission),

Pass the drug take-back bill.

Agenda Schedule: - - - - -

- September 27 @ Study Session: Discuss & Identify Key Issues
- Nov 1 @ ¾ hour of Special Board Meeting: Review Draft Agenda & Partner Issues
- Nov 22 @ Action at Board Meeting: Final Refinements & Adopt Agenda
- Dec 13: Legislative Breakfast

Goal for Today:
Discuss & Identify Key Issues

Please Refer to... As part of the July 26th Board materials, we sent a full 37 page summary of 2011 Legislative Outcomes. It is also available on the front page of our website:

www.KitsapRegionalCouncil.org




Transportation 2040

toward a sustainable transportation system

T-2040 Prioritization
Kitsap Regional Coordinating Council
September 27, 2011

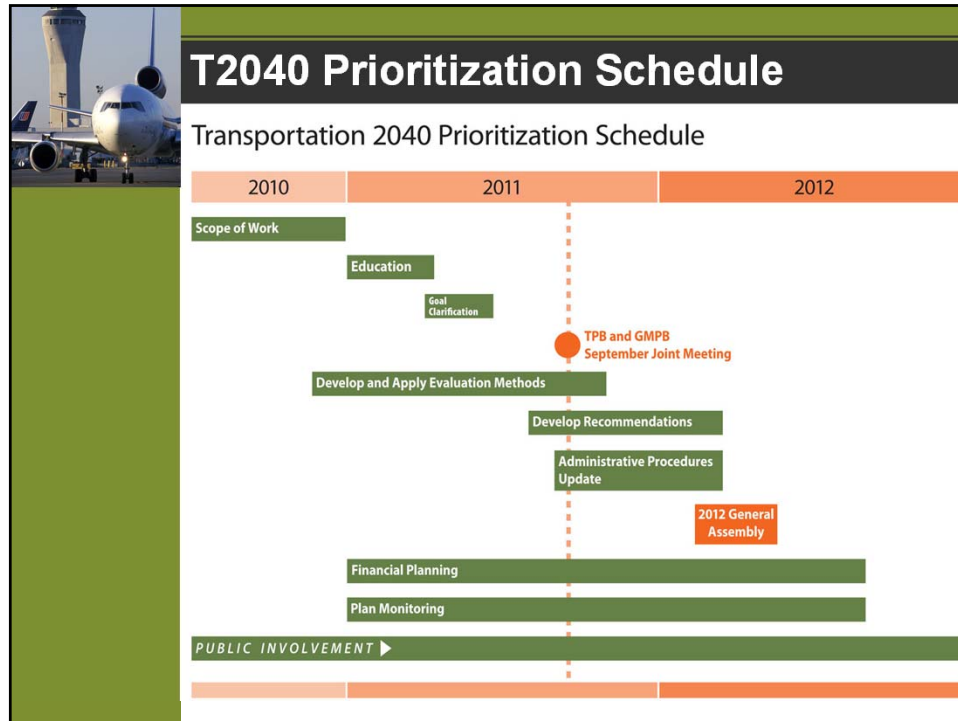
Puget Sound Regional Council
PSRC



T2040 Prioritization Mission Statement

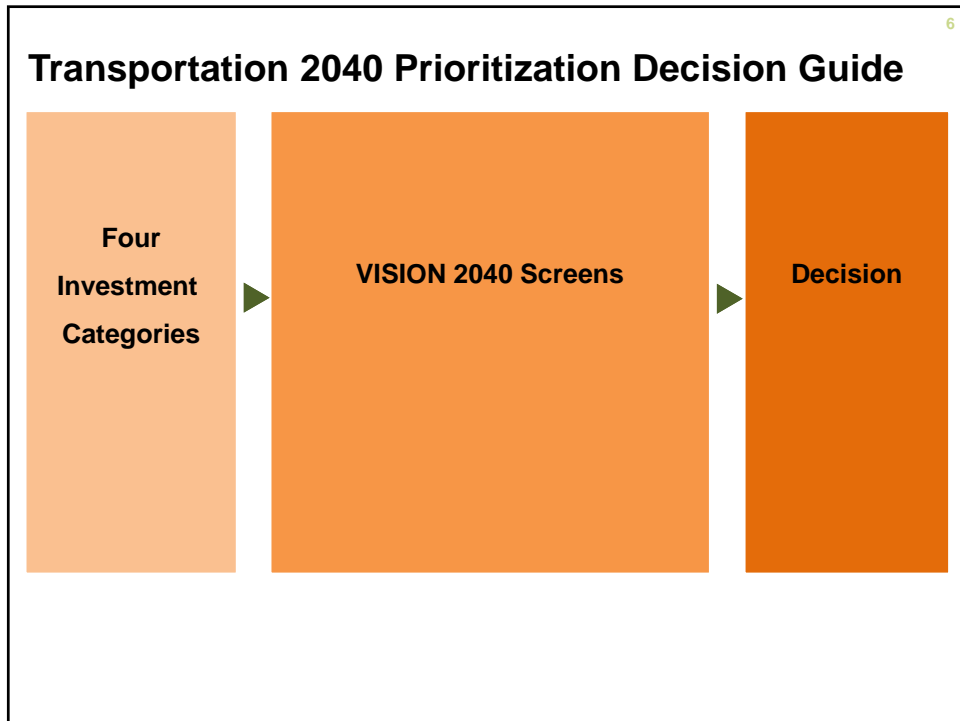
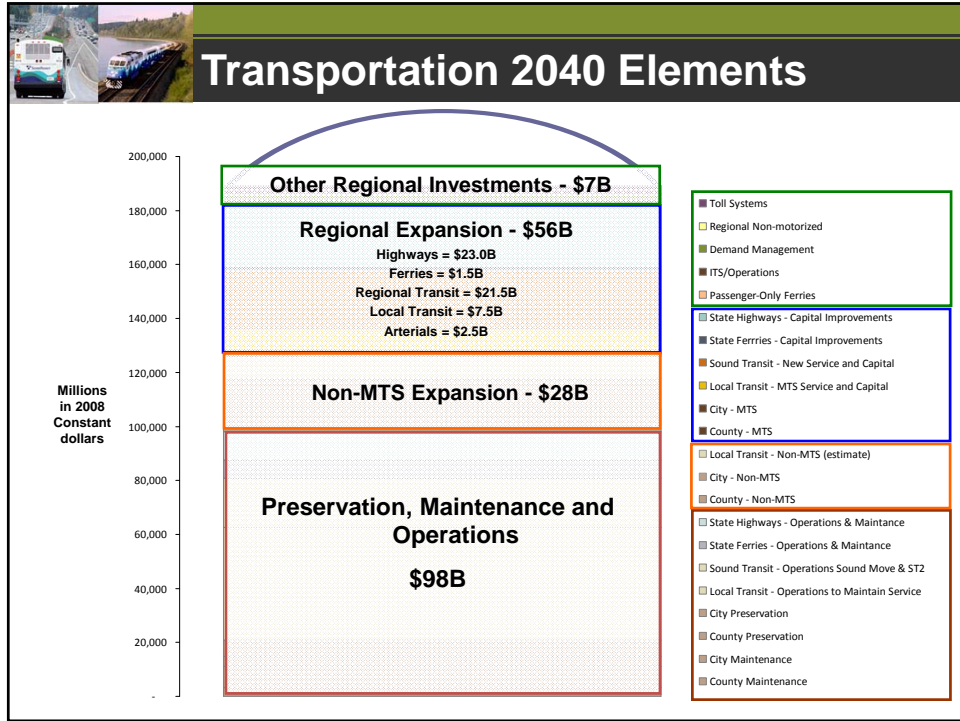
“To prioritize transportation projects in a manner that reinforces and implements VISION 2040. This will include the development and application of an evaluation process to prioritize projects/programs that are within the plan as well as the means for allowing projects to be entered, modified or removed.”

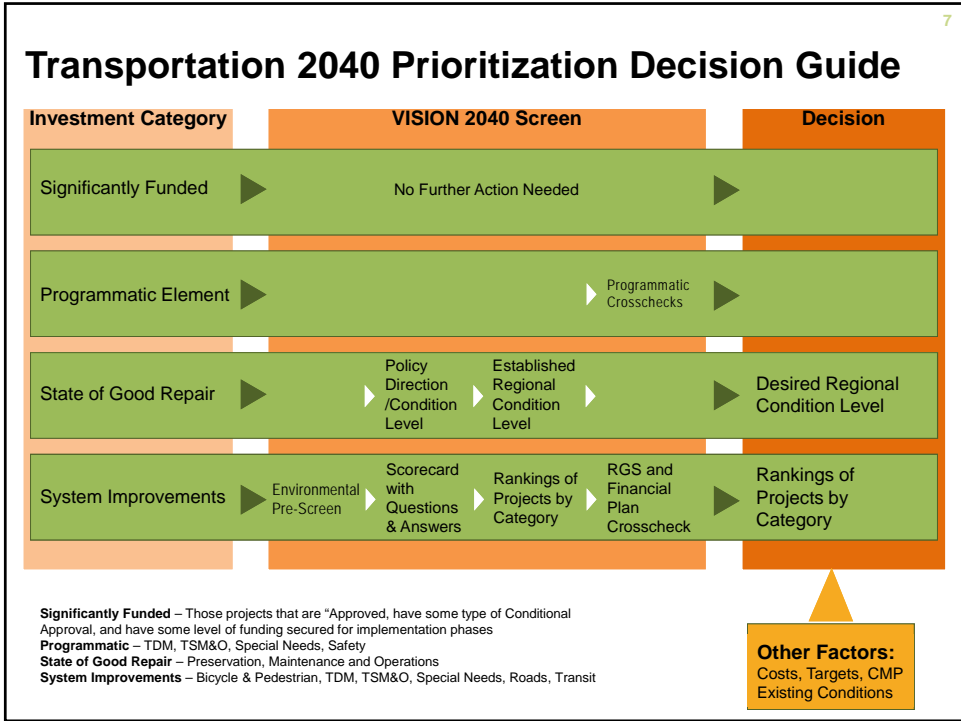
Approved
December 2010



How might this new Process be Used?

- Implement VISION 2040
- For T2040 update, rank transportation projects within the plan, by categories, by decade
- Communicate regional transportation priorities to the legislature
- Improve alignment between state, regional and local investments
- Identify priority projects as inspiration and guides for future project proposals





T2040 PRIORITIZATION - SCORECARD EXAMPLE

PROJECT	CATEGORIES									SCORE	WEIGHTED SCORE
	SUPPORT FOR CENTERS	JOB ACCESS	TRAVEL BENEFITS	NON-SOV USE	UNDERSERVED POPULATIONS	SAFETY	BENEFITS TO TRUCKS	EMISSIONS REDUCTIONS	ENVIRONMENTAL CONCERN		
Project 1	☐	●	☐	○	☐	○	☐	●	☐	-4	-4.8
Project 2	●	●	●	●	●	●	●	○	☐	10	11.2
Project 3	●	●	●	●	●	●	●	●	☐	11	12
Project 4	☐	○	☐	☐	○	○	○	●	☐	0	1.6
Project 5	☐	☐	●	☐	☐	○	☐	☐	☐	-2	0
Project 6	☐	●	●	●	○	☐	●	☐	☐	-5	-2.4

Scoring symbols:

●	☐	○	☐	●
beneficial	somewhat beneficial	neutral	somewhat detrimental	detrimental

Approach Topic – “Significantly Funded”

Identifying a set of “Significantly Funded” investments which will not be subject to further prioritization

- *Significantly Funded* projects could be “Approved” or “Conditionally Approved”
- Could include voter approved projects (i.e., ST2)

Continued

Approach Topic – Preservation, Maintenance and Operations

State of Good Repair: The treatments of Maintenance, Preservation and Operations through providing additional information on existing conditions and setting of desired condition levels

Continued

11

Approach Topic - Measures

Utilizing nine consistent measures – to provide information for the prioritization decisions

- Support for Centers
- Jobs
- Travel
- Multimodal
- Underserved populations
- Safety
- Freight
- Climate
- Puget Sound

Continued

12

Approach Topic - Evaluation Method

Evaluation Method: Utilizing the most appropriate tools and units for evaluating projects within investment categories – to provide information for the decision

- Bicycle, pedestrian and complete streets
- Efficiency and safety (TDM/TSM&O)
- Special Needs
- Arterial and State Routes
- Highway and Transit Expansion

Advisory committee scoring

Travel Demand Model (advisory committee to review results)

Continued

13

Approach Topic - Crosschecks

Applying crosschecks to make ensure investments are consistent with the Regional Growth Strategy and T2040, including the following:

- Regional Growth Strategy (RGS) Crosscheck
- T-2040 Financial Plan Crosscheck
- T-2040 Programmatic Crosscheck

Continued

14

Approach Topic – Regional Growth Strategy

ACTIVITY UNITS* GROWTH						
(share of each county’s future growth by geography – 2006-2040)						
	Metro. Cities	Core Cities	Larger Cities	Small Cities	Uninc. UGA	Rural
Snohomish County	26%	11%	20%	8%	26%	9%
Pierce County	37%	20%	8%	14%	17%	5%
Kitsap County	25%	16%	10%	10%	27%	14%
King County	43%	35%	13%	4%	4%	2%

*Activity units include population and employment.

Continued

15

Approach Topic - Weighting

Using weighting – to provide information for the decision

EXAMPLE 1		EXAMPLE 2	
Measure	Points	Measure	Points
Support for Centers	30	Support for Centers	20
Jobs Access	10	Jobs Access	15
Travel Benefits	10	Travel Benefits	10
Non-SOV Use	10	Non-SOV Use	10
Transit Dependent Populations	10	Transit Dependent Populations	15
Safety	10	Safety	10
Benefits to Freight	10	Benefits to Freight	10
Emissions Reductions	10	Emissions Reductions	10
Total	100	Total	100

Continued

16



Next Steps

- September through November 2011
 - RSC and PWG refine approach
- October 2011
 - **Executive Board** Briefing/Direction
- November 2011
 - TPB Recommendation
- December 1, 2011
 - **Executive Board** Briefing/Direction
- December 8, 2011
 - TPB releases DRAFT recommendation for public comment
- February 2012
 - TPB forwards comments to the **Executive Board**
- Feb-March 2012
 - **Executive Board** Finalizes recommendation
- Spring 2012
 - General Assembly Action





Information and Contacts

www.psrc.org



Robin Mayhew
rmayhew@psrc.org
206-464-7537

Alon Bassok
abassok@psrc.org
206-464-7091

Stephen Kiehl
skiehl@psrc.org
206-971-3290



**For
Your
Information**





Kitsap Regional Coordinating Council

2011 Meeting Calendar

Meeting changes &
additions noted in
bold and ★

**COMMITTEE
MEETING
SCHEDULE: 2011**
Call 360-377- 4900 for further details

<p>★ Legislative Breakfast ★ Tuesday, December 13, 7:30 to 9:30 a.m. – <i>Location to be announced</i></p>																						
<p>Executive Board Meetings Norm Dicks Government Center Main Meeting Chambers 8:00 a.m. – 12:00 noon Nov 22 Special Board Meeting: 10:30 – 11:00 a.m. November 1</p>	<p>Executive Committee Bremerton Mayor’s Conference Room 9:30 – 11:00 a.m. Oct 4 Dec 6 8:30 – 10:00 a.m. Nov 1</p>	<p>★ Transportation Policy Board & Transportation Technical Advisory Committees ★ Kitsap Transit Conference Room 2:00 – 5:00 p.m. ★ Oct 27: TAC & POL ★ Nov 10: POL & TAC Dec 8: POL & TAC</p>																				
<p>Planning Directors Forum Poulsbo City Hall 10:00 a.m. to 12:30 p.m. Oct 20 Nov 3 8:30 a.m. – 11:00 a.m. Dec 8</p>	<p>Public Works Group <i>Meeting dates to be announced</i></p>																					
<p>Kit~Net Policy Advisory Group Council Conference Room, 6th Floor Norm Dicks Government Center 8:30 a.m. – 10:30 a.m. Nov 10</p>	<p>Teleconference calls among Kitsap Reps to PSRC Policy Boards & Staff Committees:</p> <table border="1" style="width: 100%; border-collapse: collapse;"> <thead> <tr> <th></th> <th style="text-align: center;"><i>October</i></th> <th style="text-align: center;"><i>November</i></th> <th style="text-align: center;"><i>December</i></th> </tr> </thead> <tbody> <tr> <td style="text-align: center;">Executive Board</td> <td style="text-align: center;">Tues 25th @ 4pm</td> <td style="text-align: center;">Tues 29th @ 4pm</td> <td style="background-color: #cccccc;"></td> </tr> <tr> <td style="text-align: center;">Transportation</td> <td style="text-align: center;">Tues 11th @ 3:30pm</td> <td style="text-align: center;">Tues 8th @ 3:30pm</td> <td style="text-align: center;">Tues 6th @ 4pm</td> </tr> <tr> <td style="text-align: center;">Growth Management</td> <td style="background-color: #cccccc;"></td> <td style="text-align: center;">Tues 8th @ 9am</td> <td style="background-color: #cccccc;"></td> </tr> <tr> <td style="text-align: center;">Economic Development</td> <td style="text-align: center;">Thurs 27th @ 2pm</td> <td style="background-color: #cccccc;"></td> <td style="background-color: #cccccc;"></td> </tr> </tbody> </table> <p style="text-align: center;"><i>Telcon’s will be approximately 30 minutes. Reminders & call in details will be circulated one week prior to each call. PSRC Meeting Agendas are distributed by PSRC staff to Board members, alternates, & interested parties, the Thursday before each Board Meeting.</i></p>			<i>October</i>	<i>November</i>	<i>December</i>	Executive Board	Tues 25 th @ 4pm	Tues 29 th @ 4pm		Transportation	Tues 11 th @ 3:30pm	Tues 8 th @ 3:30pm	Tues 6 th @ 4pm	Growth Management		Tues 8 th @ 9am		Economic Development	Thurs 27 th @ 2pm		
	<i>October</i>	<i>November</i>	<i>December</i>																			
Executive Board	Tues 25 th @ 4pm	Tues 29 th @ 4pm																				
Transportation	Tues 11 th @ 3:30pm	Tues 8 th @ 3:30pm	Tues 6 th @ 4pm																			
Growth Management		Tues 8 th @ 9am																				
Economic Development	Thurs 27 th @ 2pm																					

Watch for the 2012 KRCC Meeting Calendar in the November 22 Board Packet!