



REPOWER BAINBRIDGE

—

REPOWER BREMERTON

Hilary Franz
October 3, 2010

Four Key Outcomes

1. Reducing the Burden of Energy Costs
2. Achieving Maximum Increase in Energy Efficiency
3. Growing a Clean Energy Economy in Kitsap
4. Reducing Greenhouse Gas Emissions

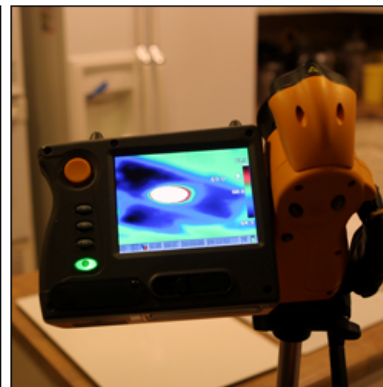
Program Overview



- Conduct Two-Tier home and commercial energy assessment program
- Incentives, rebates and low-interest energy efficiency & renewables financing
- Energy Efficiency Awareness and Education
- Contractor Workforce Training

Energy Advisors

- Homeowners team with an **Energy Advisor** who will help them through the process
- Delivers objective home energy assessment
- Explains financing and incentive/rebate options
- Ensures quality control in 10% of work
- Provides objective third party oversight
- Assists homeowner through the process from start to finish



Energy Efficiency Financing

Loan Products

Residential:

\$ 1,000 to \$ 10,000

\$ 10,001 to \$ 50,000

Commercial:

\$ 5,000 to \$ 25,000

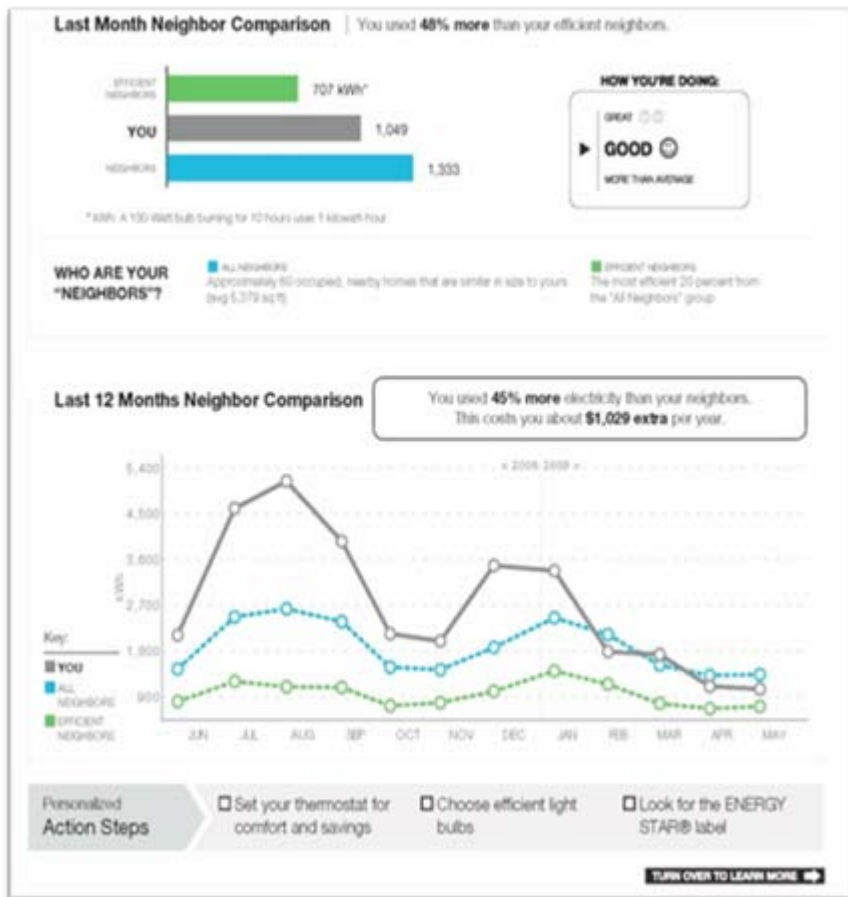
Rate: 5.99%

Loan Loss Reserve: 5%

Measures: Energy Efficiency and Renewables



Energy Awareness and Education



- Online Energy Management
- Home Energy IQ Workshops
- OPOWER Home Energy Reports
- Home Performance Score

Work Standards – Contractor Support

- High Quality Employment Requirement
- Contractor Training and Certification Standards
- Competitive Contractor Selection
- Establishes Reporting Requirement
- Quality Control on Work



Program Partners

- **Program Communities:** City of Bainbridge Island, City of Bremerton, Kitsap County
- **Fund Management Lead:** Kitsap Credit Union
- **Service Delivery Lead:** Conservation Services Group
- **Utility:** Puget Sound Energy
- **Workforce:** Home Performance Trade Allies, Olympic Community College, Work Source Center, labor and contractor groups
- **Community Outreach:** Local community groups and non-profit organizations



Thank You!

Hilary Franz
(206) 734-9729
hilary@hilaryfranz.com