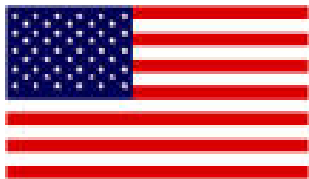
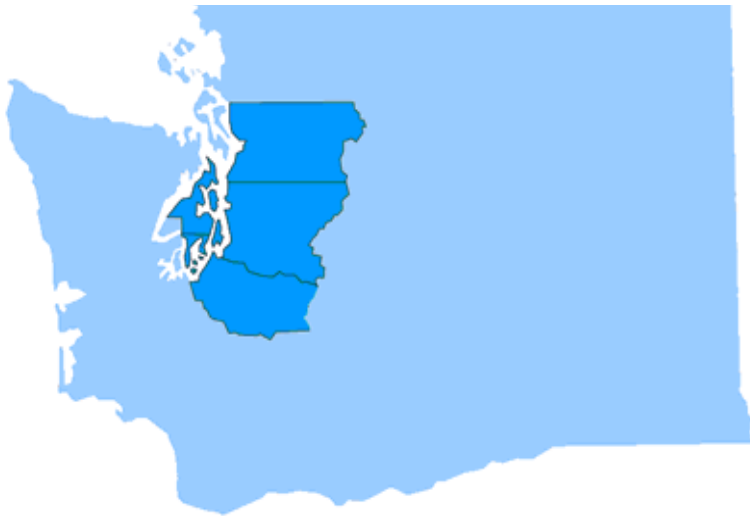




# *Puget Sound Regional Council*

## Puget Sound Regional Council PSRC



Federal MPO



State RTPO

- Regional Growth, Economic and Transportation Planning
- Federal transportation funds to priority projects
- Regional data and forecasts
- Forum for regional issues
- Prosperity Partnership

**VISION 2040-** Long-range Growth Strategy

**Destination 2030** – Long-range Transportation Plan

**PSRC Funding** – Transportation Improvements

**Prosperity Partnership** – Economic Development

**Data** – Key demographic and travel demand datasets

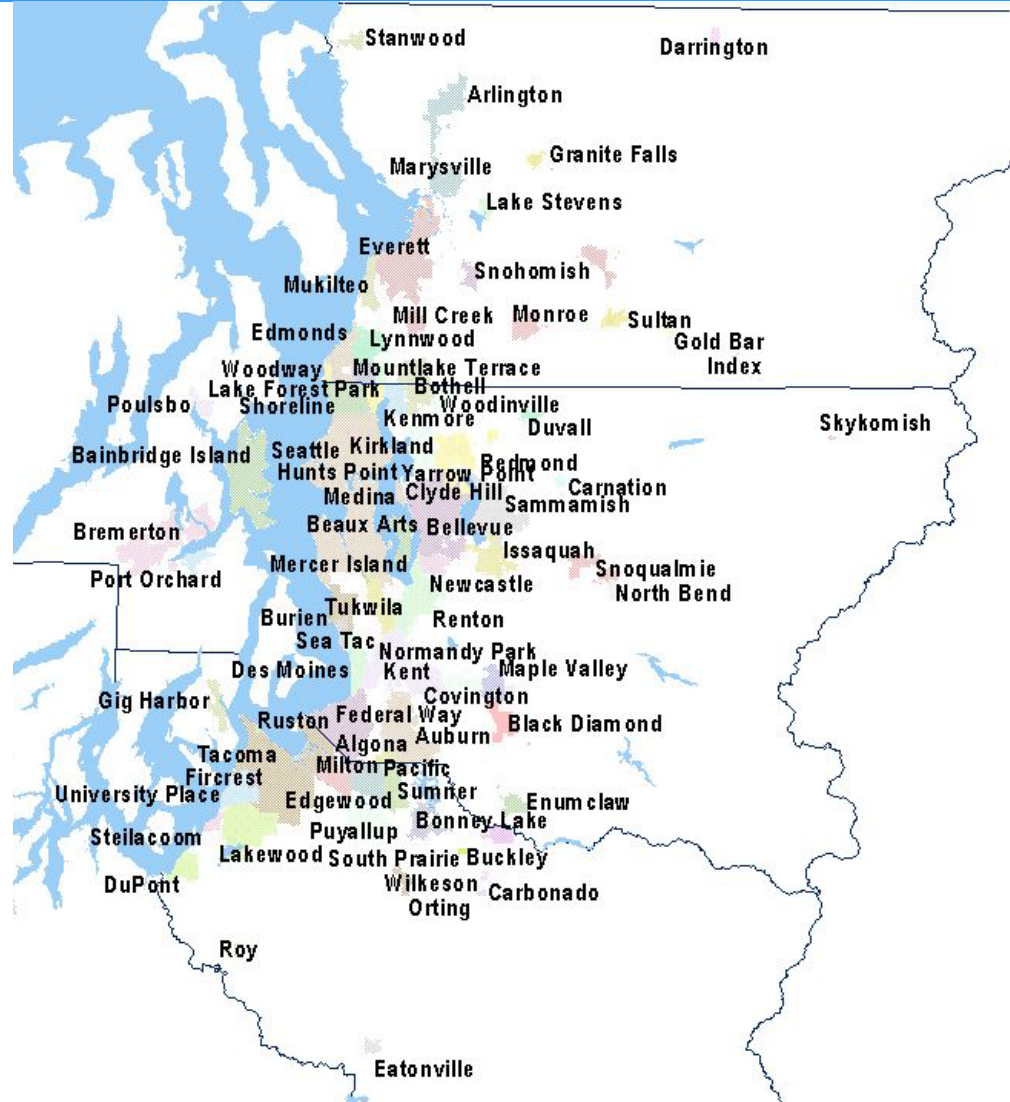
# Central Puget Sound Region

## *In the Region:*

- 4 Counties
- 82 Cities and Towns
- Hundreds of Special Districts

## *PSRC Membership:*

- Cities, counties, ports, state agencies, transit, Tribal Governments



# *PSRC Leadership*



PSRC President,  
Sue Singer,  
Auburn Deputy  
Mayor



PSRC Vice-  
President, Ray  
Stephanson  
Everett Mayor



Transportation  
Policy Board  
Chair,  
Julia Patterson,  
King County  
Councilmember

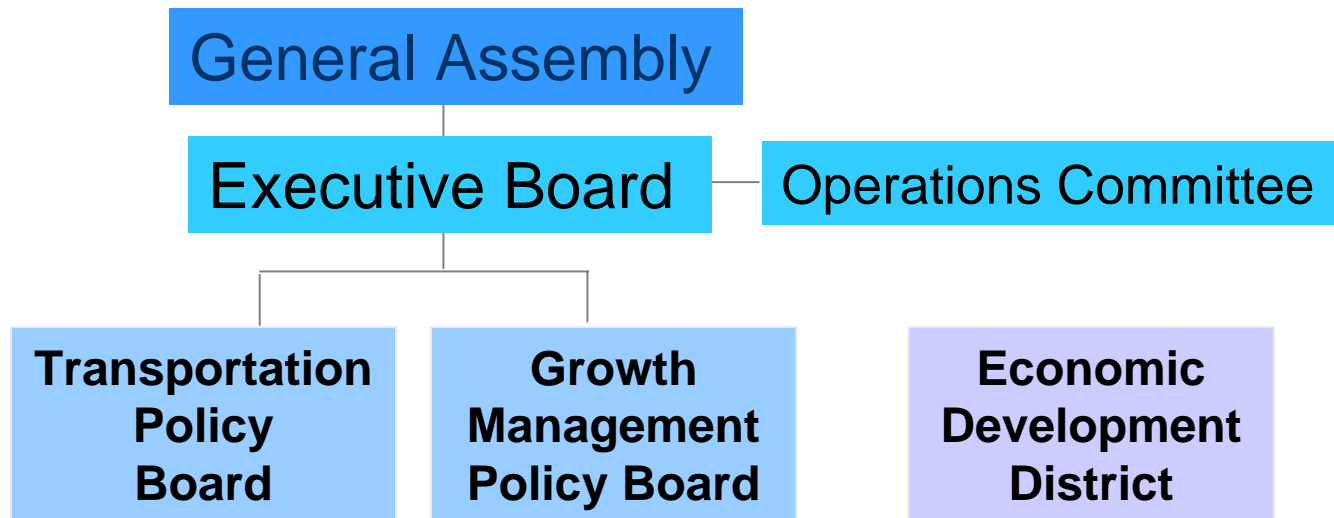


Growth  
Management  
Policy Board  
Chair,  
Mike Lonergan,  
Tacoma  
Councilmember



Economic  
Development  
District President  
John Chelminiak,  
Bellevue  
Councilmember

# Organization and Decision Making





# *Kitsap's Elected Leadership at PSRC*

Executive Board - Councilmember Carol Arends, City of Bremerton, Commissioner Josh Brown, Kitsap County, Mayor Darlene Kordonowy, City of Bainbridge Island - Other Cities in Kitsap County  
Commissioner Bill Mahan, Port of Bremerton

EB Alternates - Commissioner Jan Angel, Kitsap County, Mayor Cary Bozeman, City of Bremerton, Commissioner Cheryl Kincer, Port of Bremerton, Councilmember Carolyn Powers, Port Orchard - Other Cities in Kitsap County

Executive Committee - Commissioner Josh Brown, Kitsap County

Transportation Policy Board - Mayor Cary Bozeman, City of Bremerton, Councilmember Kim Brackett, City of Bainbridge Island - Other Cities in Kitsap County, Commissioner Josh Brown, Kitsap County/Kitsap Transit, Randy Witt, City of Bainbridge Island - PSRC Regional Project Evaluation Committee

TPB Alternates - Councilmember Carol Arends, City of Bremerton, Commissioner Steve Bauer, Kitsap County / Kitsap Transit (1st Alt.), Councilmember Linda Berry-Maraist, City of Poulsbo - Other Cities in Kitsap County, Richard Hayes, (2nd Alt.), Kitsap Transit, Commissioner Larry Stokes, Port of Bremerton - Ports

Growth Management Policy Board - Commissioner Jan Angel, Kitsap County, Commissioner Bill Mahan, Port of Bremerton – Ports, Councilmember Will Maupin, City of Bremerton, Councilmember Dale Rudolph, City of Poulsbo - Other Cities in Kitsap County

GMPB Alternates - Commissioner Steve Bauer, Kitsap County, Mayor Lary Coppola, Port Orchard - Other Cities in Kitsap County, Councilmember Mike Shepherd, City of Bremerton

Economic Development District - Commissioner Steve Bauer, Kitsap County, Mayor Cary Bozeman, City of Bremerton, Commissioner Bill Mahan, Port of Bremerton, Councilmember Chris Snow, City of Bainbridge Island - Other Cities in Kitsap County, Bill Stewart, Kitsap EDA

EDD Alternates - Commissioner Josh Brown, Kitsap County Commissioner Cheryl Kincer, (1st Alt.) Port of Bremerton, Silvia Klatman, Greater Bremerton Chamber of Commerce, Councilmember Ed Stern, City of Poulsbo, Commissioner Larry Stokes, (2nd Alt.) Port of Bremerton Dwight Sutton, Kitsap EDA



# *Kitsap's Staff Leadership*

Regional Staff Committee - Barry Berezowsky, City of Poulsbo - Other Cities in Kitsap County, Greg Cioc, Kitsap County, Richard Hayes, Kitsap Transit, Mary McClure, Kitsap Regional Coordinating Council, Andrea Spencer, City of Bremerton

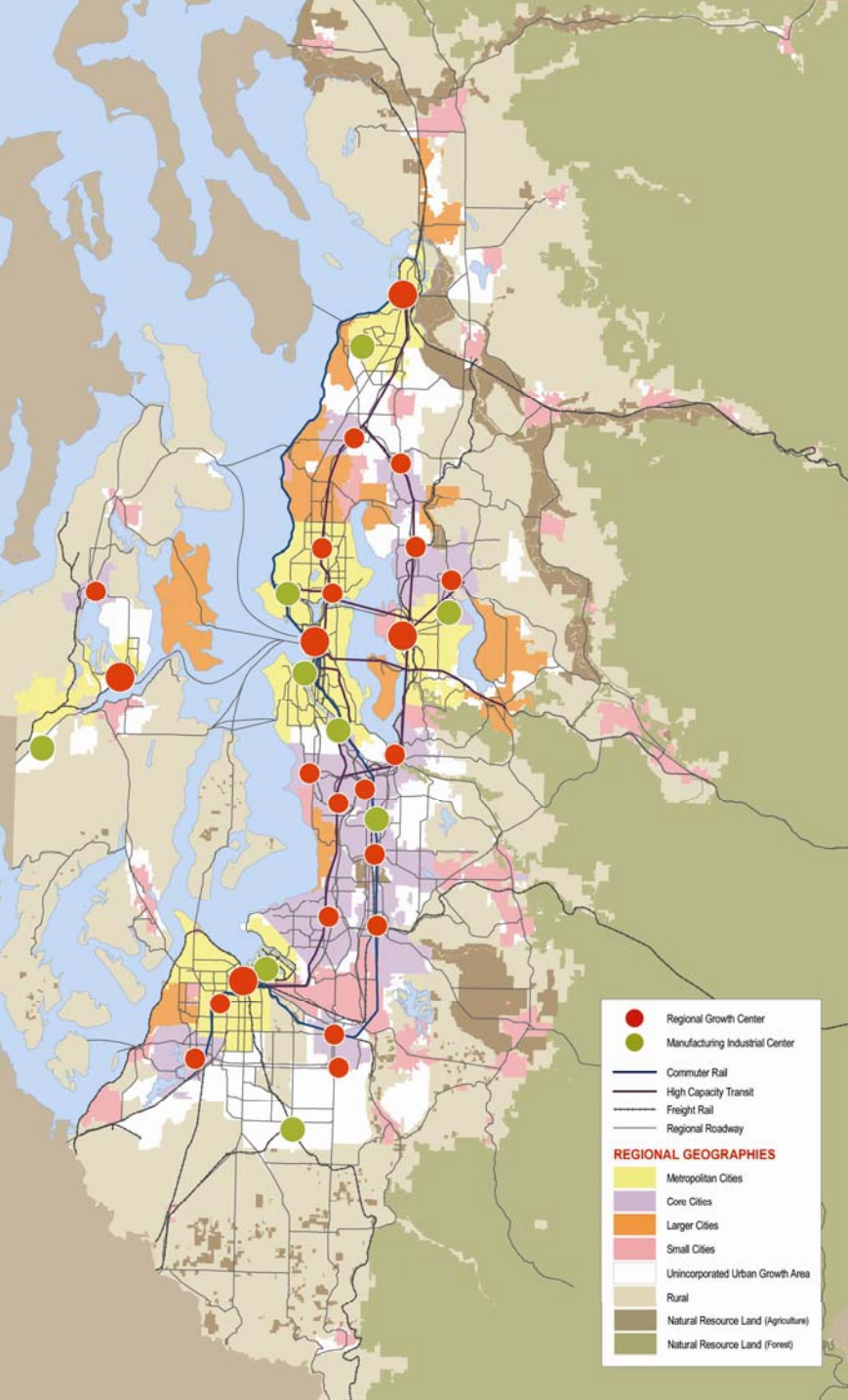
RSC Alternates - Alison O'Sullivan, Suquamish Tribe - Other Cities in Kitsap County, Phil Williams, City of Bremerton

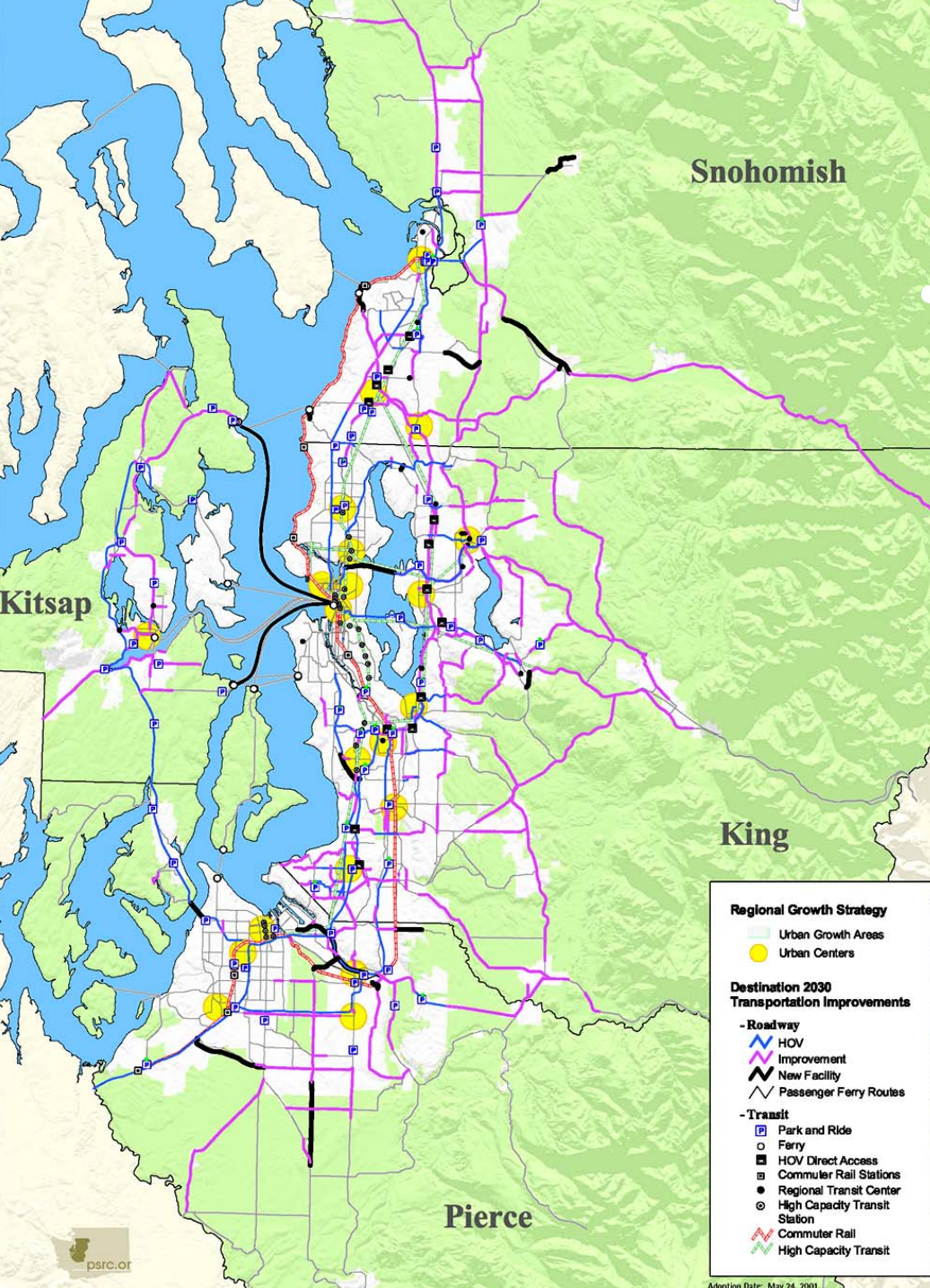
Regional Project Evaluation Committee - Chair - Randy Witt, City of Bainbridge Island - Other Cities in Kitsap County, Neal Campbell, WSDOT-Olympic Region, Greg Cioc, Kitsap County, Wendy Clark-Getzin, Kitsap Transit, Michael Mecham, City of Bremerton

RPEC Alternates - John Clauson, Kitsap Transit, Dick Egolf, WSDOT-Olympic Region, Andrzej Kasiniak, City of Poulsbo - Other Cities in Kitsap County, Larry Matel, City of Bremerton, Jeff Shea, Kitsap County

# VISION 2040

- The region's long range growth strategy
- Multicounty Planning Policies Integrate Regional Objectives and Provide Broad Direction
- Focuses New Growth in Centers and Urban Areas, Connected by Multimodal Transportation System
- Stronger Environmental, Economic, and Health Policies





## The region's long-range transportation plan

- State highways, HOV, ferries, rail, freight
- Regional highways, transit, aviation, freight
- Local streets, roads and transit
- Bicycle and Pedestrian facilities
- Operations and system management
- Travel demand strategies

# PSRC Funding

*\$160 million invested in regional transportation improvements at PSRC annually to implement Destination **2030***

*2007-10 Regional TIP advances \$6 Billion in projects and secures federal funds.*

*Since 1992, Kitsap County received over \$30 million more federal funds by participating in PSRC, than if the county hadn't.*

# *PSRC Funds*

Federal funds flow from the Highway Trust Fund through SAFETEA-LU to each state by formulas

PSRC Receives \$160 Million Annually through SAFETEA-LU Programs

- Surface Transportation Program (STP)
- Congestion Mitigation Air Quality (CMAQ)
- Federal Transit Administration (FTA)

Project Selection conducted every three years

Next round will begin in 2009

# Prosperity Partnership

Puget Sound Regional Council



# Regional Economic Strategy

## PROSPERITY PARTNERSHIP

ECONOMIC SUMMIT  
11/19/05

### FIVE PILOT CLUSTERS

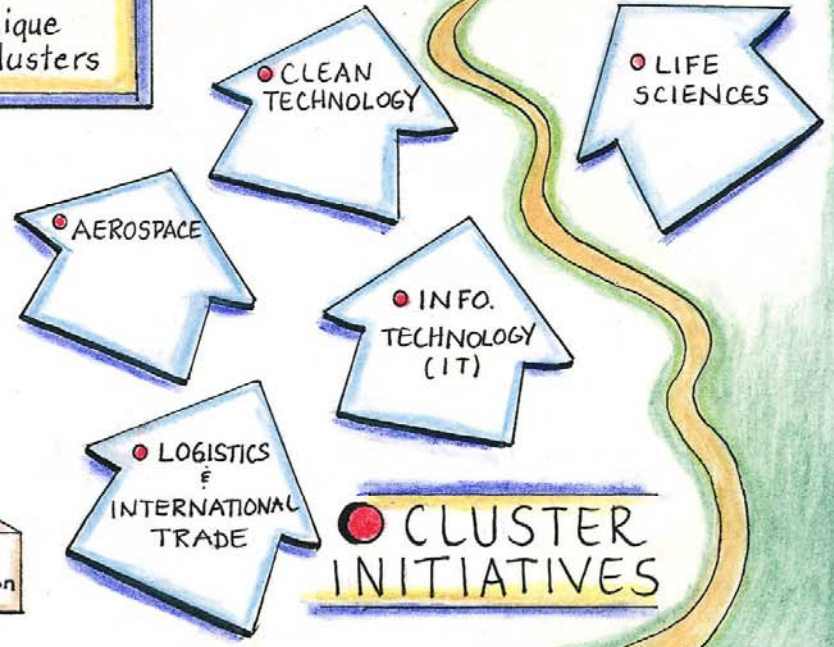
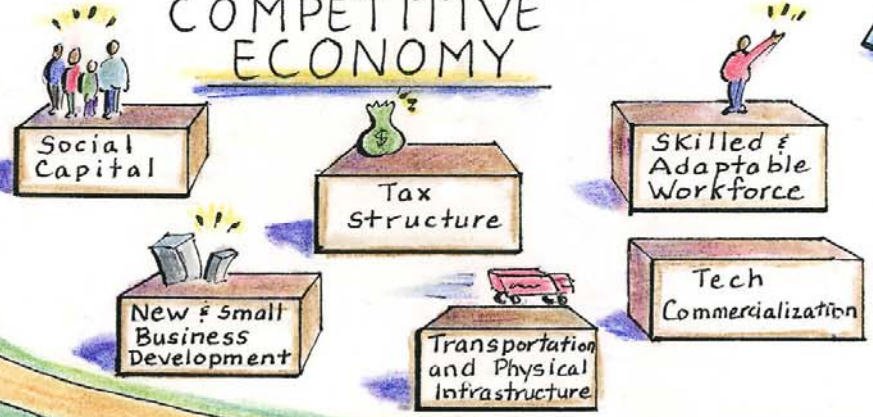
- Life Sciences
- Aerospace
- Clean Technology
- IT
- Logistics & International Trade

### Two-Pronged Approach

- ① Rebuild the region's economic foundations to meet the needs of the new economy
- ② Meet the unique needs of our clusters



### FOUNDATIONS of a COMPETITIVE ECONOMY



## **Data available on [www.psrc.org/datapubs](http://www.psrc.org/datapubs)**

Annual residential building permits

Annual population, housing, and household estimates

Household income estimates

Covered employment estimates

Parking inventory for Seattle and Bellevue downtowns

Forecasts of key economic and demographic measures  
out to 2030 for the region as a whole

Forecasts of Population and Employment

## *Benefits of PSRC Membership*

- A Voice in Key Regional Decisions
- Distribution of Federal Transportation Dollars
- Economic Development
- Technical Assistance to Obtain Federal and State Funding
- Education and Training
- Data to Meet Special Planning Needs
- Geographic Information Systems
- Free Standard and Secondary Data Products and Working Data Sets
- Technical Expertise



*We're Here to Help You*

**[www.psrc.org](http://www.psrc.org)**

**Information Center**

**206-464-7532**