

# Airports and Compatible Land Use Program

## Kitsap County Planners Meeting

April 14, 2011

### **Carter Timmerman**

Aviation Planner  
WSDOT Aviation

### **Paula Hammond**

Secretary of Transportation

### **Steve Reinmuth**

Chief of Staff

### **John Shambaugh**

Acting Aviation Division Director

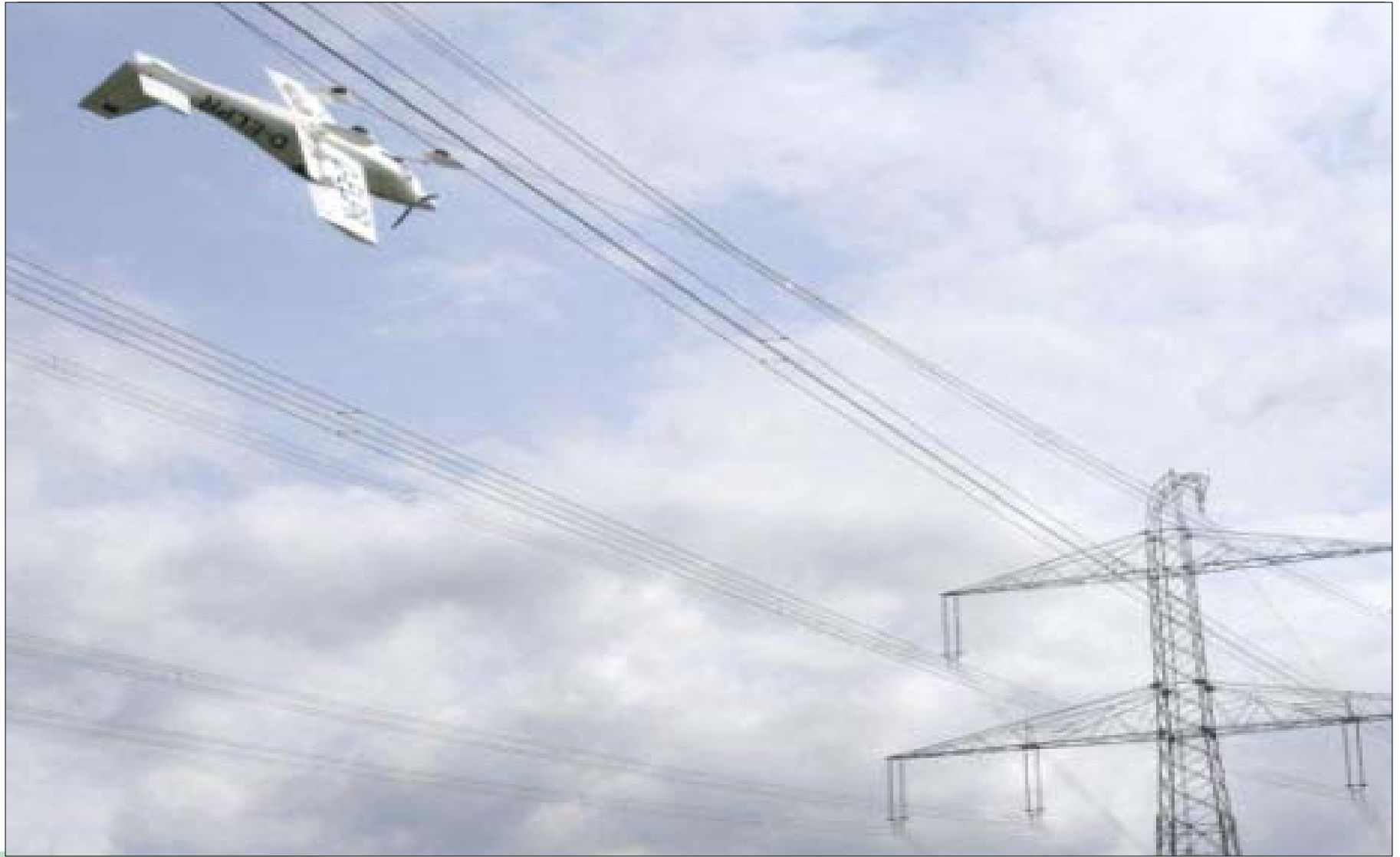
# Presentation Outline

- Incompatible Development and Consequences of Encroachment
- Airports and the Growth Management Act
- WSDOT's *Airports and Compatible Land Use Guidebook*
- *Formal Consultation*

# What is Incompatible? Wildlife / Attractants



# What is Incompatible? Height Hazards



# What is Incompatible?

Residential Encroachment



# What is Incompatible? High Intensity/ Special Function Land Uses



*Commercial Service Airport*

# Consequences of Encroachment

- Degraded Airport Operations
- Impeded Airport Expansion
- Hampered Economic Development
- Reduced Quality of Life

***Dorothy Scott Municipal Airport***



***Reid-Hillview Airport San Jose, CA***



# Airports and State Law

- Airports are Essential Public Facilities  
(*RCW 36.70A.200*)
- Airports are part of the multi-modal transportation system  
(*RCW 36.70A.070*)
- Towns, cities and counties must discourage incompatible land uses  
(*RCW 36.70.547, 36.70A.510*)
- Towns, cities and counties must consult with aviation interests  
(*RCW 36.70.547, 36.70A.510*)
- WSDOT Aviation must provide technical assistance  
(*RCW 36.70.547*)



# Airports and Compatible Land Use Program

- WSDOT Aviation provides formal consultation and technical assistance to help communities meet requirements the Growth Management Act.
- WSDOT Aviation's planning program works cooperatively with airports, communities, planning organizations and local decision makers to ensure that public-use airports remain viable well into the future.



# Primary Implementation Tool

# What does this mean for the planners and decision makers?

- Framework for stakeholder participation
- Framework for the planning process
- Easy access to laws and additional resources
- Compatibility scenarios
- Formal consultation process

For more information Please contact:

[www.wsdot.wa.gov/aviation](http://www.wsdot.wa.gov/aviation)

**Carter Timmerman**

Aviation Planner  
WSDOT Aviation

***timmerc@wsdot.wa.gov***

or

**360.651.6312**