



# Kitsap Regional Coordinating Council

## Kit~Net: Kitsap Emergency Response Network Policy Briefing *Autumn, 2006*

- Goal: Develop fiber-connected broadband intra-net network (Wide Area Network) among all Kitsap public agencies, with the Kitsap Public Utility District coordinating the emerging network engineering and system architecture (core switching management):
  - Governmental intra-net for communication and information/data sharing among its members and associate members
  - Lower cost bandwidth than currently available
  - Unimpeded connection during emergencies & disasters
- Phase I: Emergency Response Network

In an emergency situation, the Kit~Net is a tool that can be used to support two different functions: **rescue and relief services** provided by First Responders (*e.g.* police, fire, cities & county) and **supplies and information distribution** provided at Community Centers (*e.g.* schools, libraries, and community centers). The Kit~Net will be an Emergency Response Network, whose members will include all public agencies in Kitsap County. The Kit~Net concept is embraced by the Department of Emergency Management, and will be included in its Emergency Management Plan.
- Inter-Governmental Agreement

The Broadband Task Force (membership roster attached) has been working with municipal attorney Scott Snyder, of Ogden Murphy Wallace LLC, to develop an inter-governmental agreement (IGA) establishing the Kit~Net. The current draft IGA is attached. **Requested timeline**: Founding Agencies approve the IGA before the end of November, 2006.
- Governance Structure

Attached is the governance structure for the Kit~Net. It is modeled on the transportation planning & decision-making structure used by the Kitsap Regional Coordinating Council, with a Technical Advisory Body and a Policy Advisory Group. All participating agencies will be required to participate at the technical advisory level to ensure clear communication, consistent standards & best practices, and equal access to technical expertise. The Policy Advisory Group will be made up of management level representatives from the network User Groups.
- Kitsap Regional Coordinating Council Role

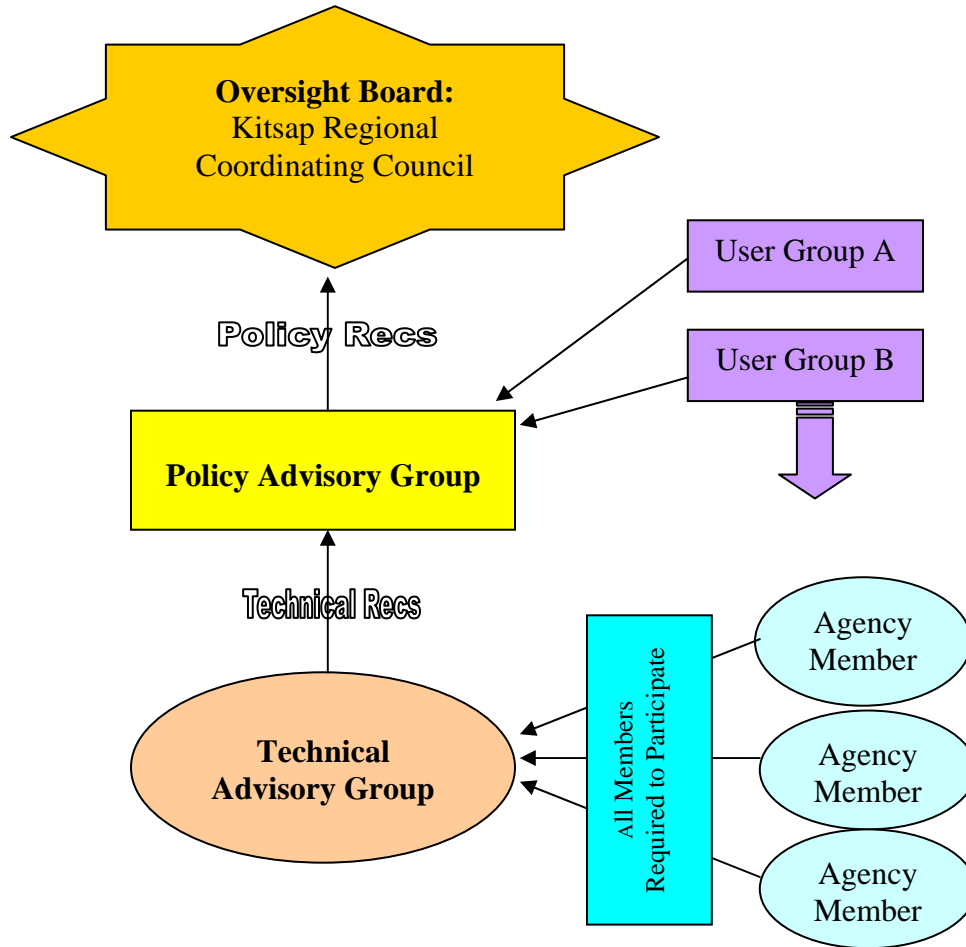
The Regional Council's role has been convener, facilitator, and coordinator, providing the forum and facilitating the discussion required to move the Kit~Net from an idea to reality. The Regional Council will continue in this role for the first 2 years of Kit~Net's operation (2007-2008). The Council Board will be the decision authority for the Kit~Net in matters of budget and system integrity. During 2009, its role will be re-evaluated and modified if needed.
- Cost Structure

Each agency will be responsible for the cost of providing its own infrastructure needed to participate in the Kit~Net. Kit~Net agencies could jointly pursue grant funding and/or group discount purchasing. Each agency will contribute \$500 to the Regional Council to support administrative start-up costs during 2006; future dues will be determined through the Kit~Net governance structure.



# Kitsap Regional Coordinating Council

## Kit~Net Governance Structure



- Program evaluation every two years
- Annual Shareholders Meeting (possibly as part of Local Government Forum)
- Each Policy Advisory Group member is responsible to brief other policy makers in their User Group



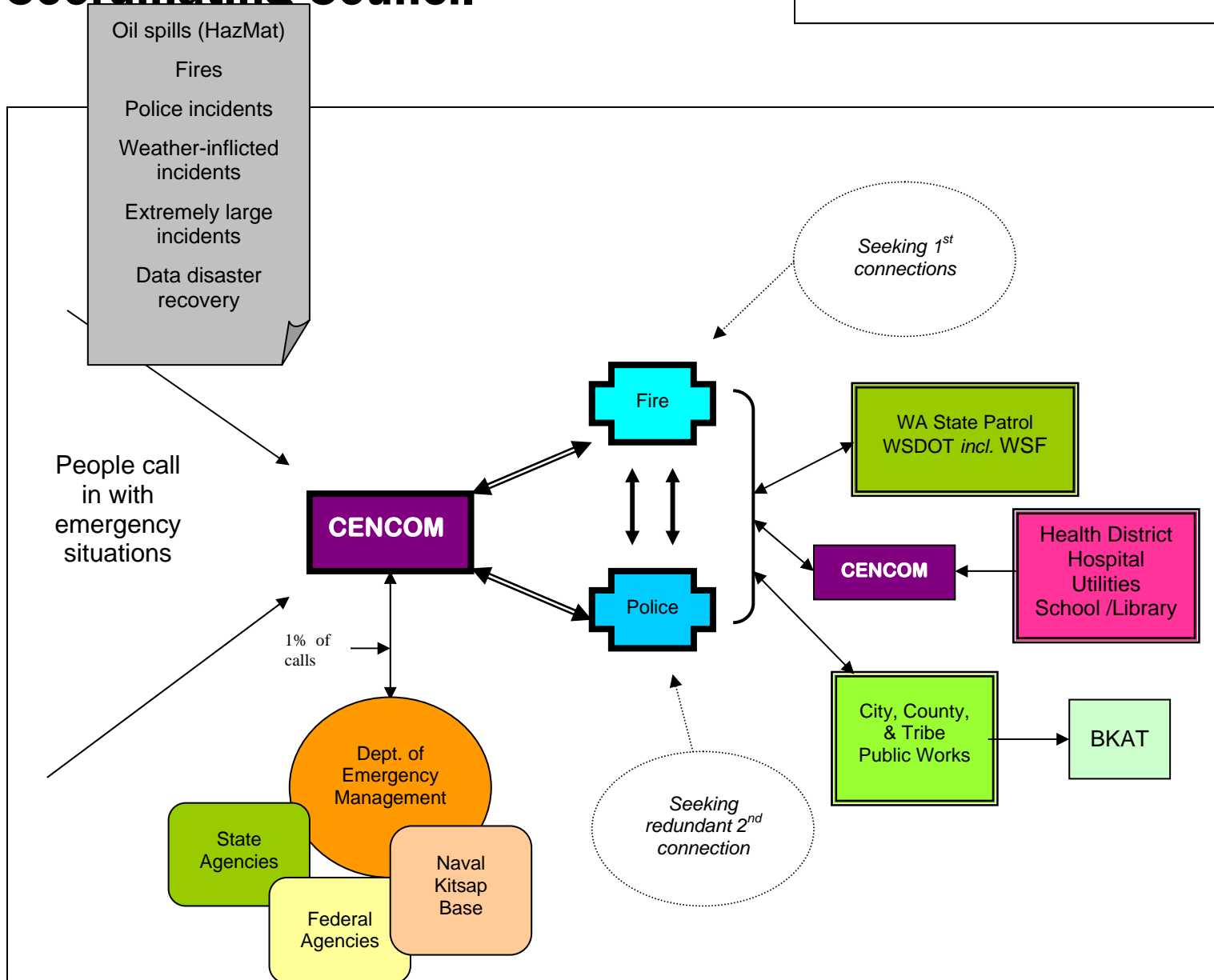
# Kitsap Regional Coordinating Council

User Groups	Policy Advisory Committee Membership
Kitsap County “firewall agencies”, including DEM	Kitsap County (1)
	CENCOM (1)
	Each City (4)
	Each Tribe (2)
	Health District (1)
Fire Districts	Representative Districts (2)
School Districts & OESD	Representative Districts (2)
Port Districts	Representative Districts (2)
Water & Sewer Districts	Representative Districts (2)
Other Public Agencies (KCCHA, Parks & Recreation Districts, Kitsap Regional Library, Olympic College)	Representative Districts (2)
<b>Total Members</b>	<b>19</b>



# Kitsap Regional Coordinating Council

**Kit~Net will Support the Communication Flow Needed During Emergencies**





# Kitsap Regional Coordinating Council

**Parameters:**  
 How quickly connected  
 How much per Megabit  
 System protocols  
 Redundancy  
 Security ~ Firewall rules

