



Kitsap Regional Coordinating Council

Draft Kitsap Regional Coordinating Council (KRCC) Planning Policy Committee (PlanPOL) Meeting Agenda

February 15, 2018 | 2:45 – 4:00 PM

Kitsap Transit, 60 Washington Ave. Bremerton, WA (3rd floor conference room)

Version 2/12/18

Objective: KRCC PlanPOL provides recommendations and guidance to the KRCC Board regarding countywide and regional land use planning efforts.

Topic	Page #
1. Welcome <ul style="list-style-type: none">a. 2018 meeting scheduleb. Procedures and protocols for PlanPOL	KRCC Meeting Calendar (pg 2)
2. Puget Sound Regional Council's (PSRC) Vision 2050 Scoping <ul style="list-style-type: none">a. Vision 2050: 45-day scoping comment periodb. Discussion regarding Kitsap's vision for growth	-Draft Vision 2050 Scoping Statement (pg 3) -Listening Session flyer (pg 19)
3. Regional Centers Framework Update <ul style="list-style-type: none">a. Brief status update on the Regional Centers Framework, which was approved by PSRC's Growth Management Policy Board (GMPB) on Feb. 1, 2018	Draft Regional Centers Framework (web link), approved by the Growth Management Policy Board
4. Review the Proposed Legislation for Changing the Deadlines for the Next Updates to Comprehensive Plans <ul style="list-style-type: none">a. Updates from Eric Baker, Kitsap County, on HB 1089, which would amend the schedule for updating comprehensive plans	Kitsap County's Overview of HB 1089 (pg 20)
5. Updates from the Land Use Technical Advisory Committee (LUTAC) <ul style="list-style-type: none">a. Review deadlines associated with planning deadlines	Timeline of planning deadlines (pg 22)
6. 2018 KRCC Land Use Program Work Plan <ul style="list-style-type: none">a. Discuss PlanPOL and LUTAC's goals for 2018	Draft proposal of land use work plan topics (pg 23)
7. Annexation Trends <ul style="list-style-type: none">a. Propose research topics to better understand annexation trends across Kitsap from 2007-2017	
8. Public Comments*	
9. Adjourn	



Kitsap Regional Coordinating Council

Draft 2018 Meeting Schedule

KRCC Board* Main Meeting Chambers, Norm Dicks Government Center, Bremerton First Tuesday of the Month - 10:15 AM-12:15 PM			KRCC Executive Committee City Halls in Poulsbo (P), Port Orchard (PO), or Kitsap Transit (KT) Third Tuesday of the Month - 1:00 PM – 3:00 PM		
Jan. 2	Feb. 6	Mar. 6	Jan. 16 (P)	Feb. 20 (PO)	Mar. 20 (P)
Apr. 3	May 1	June 5	Apr. 19 (Thurs. 9-11 @ KT)	May 15 (P)	June 19 (PO)
July 3	Aug.	Sept. 4	July	Aug. 21 (P)	Sept. 18 (PO)
Oct. 2 (Mo. of retreat)	Nov. 6	Dec. 4	Oct. 16 (P)	Nov. 20 (PO)	Dec. 18 (P)
Transportation Policy Committee* (TransPOL) and Land Use Planning Policy Committee* (PlanPOL) 3 rd Floor Conference Room - Kitsap Transit, Bremerton Third Thursday of the Month					
	<u>PlanPOL</u>	<u>TransPOL</u>		<u>PlanPOL</u>	<u>TransPOL</u>
Feb. 15	2:45-4:00pm	1:00-2:30pm	July 19	1:30-3:00pm	-
Mar. 15	-	3:15-4:45pm	Aug.	-	-
Apr. 19	1:30-3:00pm	3:15-4:45pm	Sept. 20	-	3:15-4:45pm
May 31	-	3:15-4:45pm	Oct. 18	1:30-3:00pm	-
June 21	-	3:15-4:45pm	Nov.	-	-
			Dec. 20	-	3:15-4:45pm
Transportation Technical Advisory Committee (TransTAC) 2 nd Floor Conference Room - Kitsap Transit, Bremerton Second Thursday of the Month // 12:30 PM – 2:30 PM			Land Use Technical Advisory Committee (LUTAC) Council Chambers - Poulsbo City Hall, Poulsbo Second Thursday of the Month // 9:30 AM – 11:30 AM		
Jan. 11	Feb. 8	Mar. 8	Jan. 11	Feb.	Mar. 8
Apr. 12	May 10	June 14	Apr.	May 10	June
July	Aug. 9	Sept.	July	Aug. 9	Sept.
Oct.	Nov. 8	Dec.	Oct.	Nov. 8	Dec.
Other Dates Board Retreat: TBD in October Legislative Reception: TBD in November West Sound Alliance: Various			Visit the KRCC website for meeting materials www.kitsapregionalcouncil.org *This meeting is open to the public		



VISION 2050 Plan AND SEPA Scoping Notice

February 2018



Puget Sound Regional Council

PSRC is extending the region's growth plan to 2050.

VISION 2050 will build on the region's existing plan, VISION 2040, to keep the central Puget Sound region healthy and vibrant as it grows.

As the region prepares to add more people and jobs in the coming decades — about 1.8 million more people by 2050 — VISION 2050 will identify the challenges we should tackle together as a region and renew the vision for the next 30 years.



VISION 2040 helps to coordinate the local growth and transportation plans developed by cities and counties to make sure they are consistent with the Growth Management Act and regional transportation plans.

The Puget Sound Regional Council (PSRC) is the planning agency for the central Puget Sound region, which includes King, Pierce, Snohomish and Kitsap counties. PSRC has specific responsibilities under federal and state law for transportation planning and funding, economic development, and growth management.

PSRC is updating VISION to consider new information and perspectives about a changing region. PSRC is seeking community input to shape the plan. What important regional issues should we focus on during the update?

How should the region's growth strategy be updated to plan for 2050? As we consider different ways to grow as a region, what impacts and actions should be evaluated through environmental review?

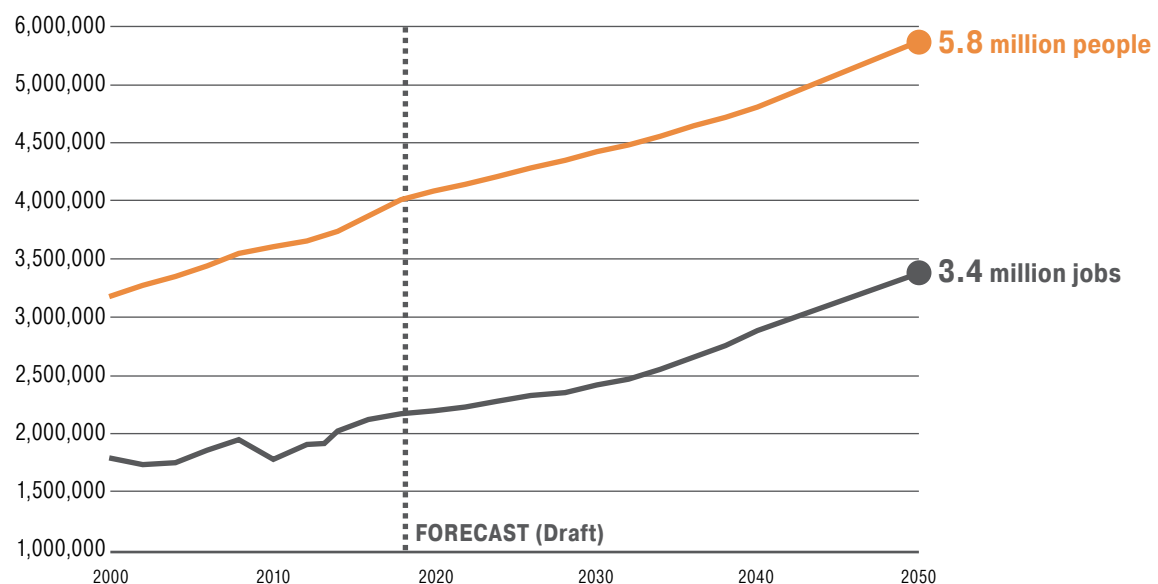
Over the next two years, PSRC will work with cities, counties, tribes, other agencies and interest groups, and the public to develop VISION 2050. PSRC will engage the public through surveys, workshops held throughout the region, formal comment periods, and input to PSRC's elected board members.

Ways to Get Involved

- Submit comments or questions about VISION 2050 scoping to VISION2050@psrc.org
- Attend listening sessions to be held in each county (dates and locations on page 11)
- Learn more about VISION 2050 and sign up for updates from PSRC at www.psrc.org/vision

Population and Employment Growth in the Central Puget Sound Region

PSRC's draft forecast shows 1.8 million more residents and 1.2 million more jobs in the region by 2050.



Sources: U.S. Census, Office of Financial Management, Employment Security Department, PSRC

Planning as a **REGION**



Since 2010, the region has experienced significant growth with about 375,000 new neighbors calling the central Puget Sound home. Meanwhile, major infrastructure investments — like completing the 520 bridge and extending light rail from Everett to Tacoma to Redmond — are moving forward.

The region has had important successes implementing VISION 2040, which helps to fulfill the goals of the state Growth Management Act (GMA). The plan has helped coordinate state and regional initiatives and supported local decisions. Cities are thriving. Regionally, growth is shifting towards more compact, sustainable development occurring within urban areas and cities, with cost effective and efficient services, reduced impacts on the environment, and positive health outcomes.

At the same time, the region continues to face significant challenges, including the climbing cost of housing. Congestion from rapid growth is reducing access to jobs, services, and housing. While recent economic growth has been strong, prosperity hasn't benefited everyone or all parts of the region. Finally, pressing environmental issues, such as climate change and preserving open space, require more collaborative, long-term action. VISION 2050 is an opportunity for cities and counties to work together to address the key challenges that extend beyond the boundaries of any single community.

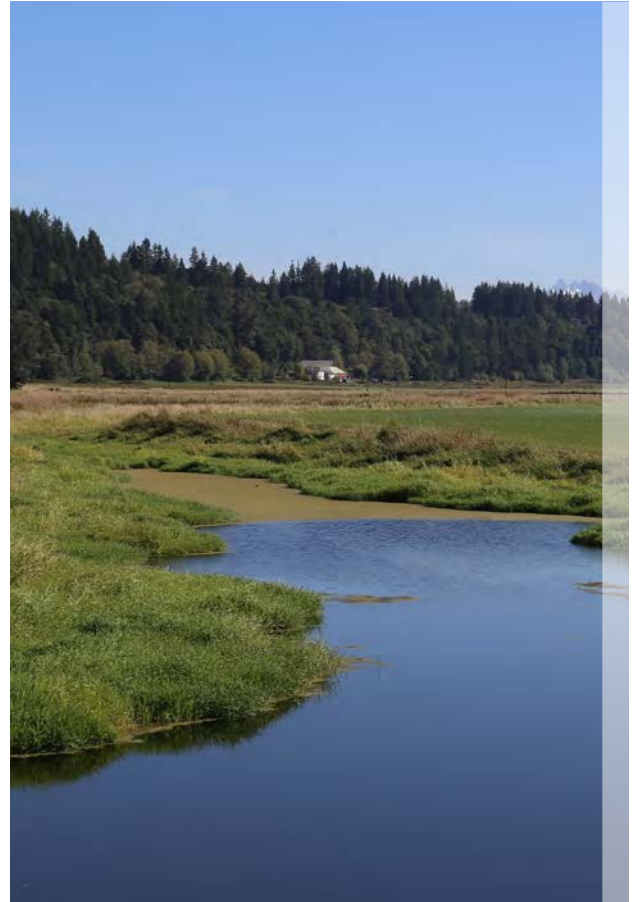


What is in **VISION 2040**?

VISION 2040 is the region's current plan for managing growth forecasted through the year 2040. The plan includes overarching goals, an environmental framework, a strategy to sustainably guide growth in the region, and multicounty planning policies. The plan also includes actions at the regional, county, and local level to make the plan a reality. VISION has six chapters addressing the environment, development patterns, housing, the economy, transportation, and public services.

The plan includes goals and policies to:

- Protect and restore the natural environment and reduce greenhouse gas emissions.
- Plan for growth in cities and urban centers, while reducing sprawl.
- Improve the balance of jobs and housing across the counties.
- Create more vibrant and resilient urban centers.
- Support health, well-being, and active living.
- Provide affordable housing choices to meet the needs of all residents.
- Improve mobility for people and goods.
- Maintain and operate the transportation system safely and efficiently.
- Encourage a strong, diverse economy.
- Provide services like solid waste, energy, and water systems to support the region's growth.

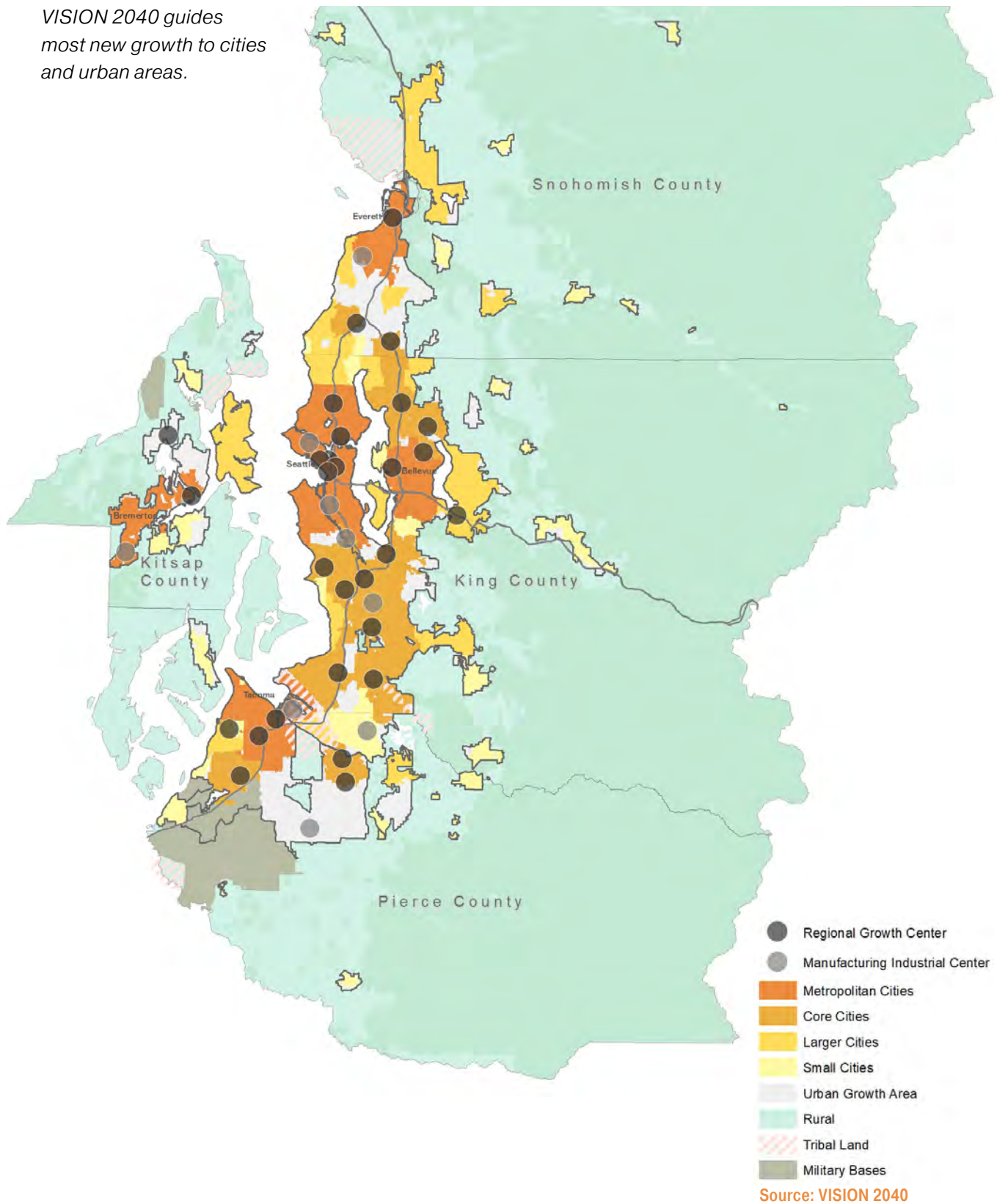


VISION 2040's Regional Growth Strategy defines a role for different types of places in accommodating the region's residential and employment growth. The strategy is organized around guiding most employment and housing growth to the region's largest cities and urban centers. Other cities and unincorporated urban areas are expected to play a more modest role as locations for new growth. Outside the urban area, rural communities, farms and forests will continue to be a permanent and vital part of the region.

Environmental review for VISION 2040 showed that, compared with a broad range of alternatives, the desired growth pattern would have significant benefits for mobility, air quality, environmental stewardship, and healthy communities.

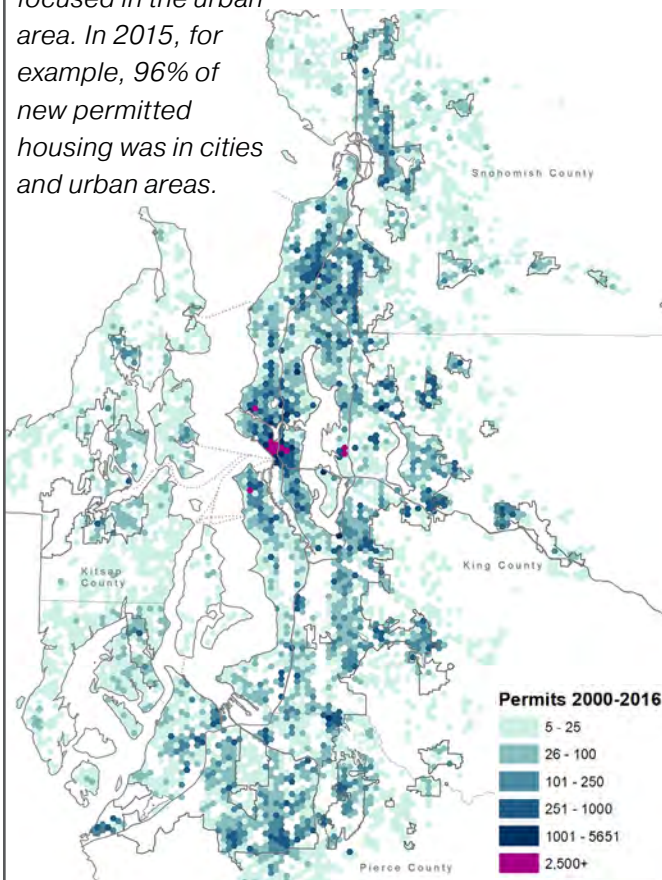
VISION 2040 Regional Growth Strategy

VISION 2040 guides most new growth to cities and urban areas.



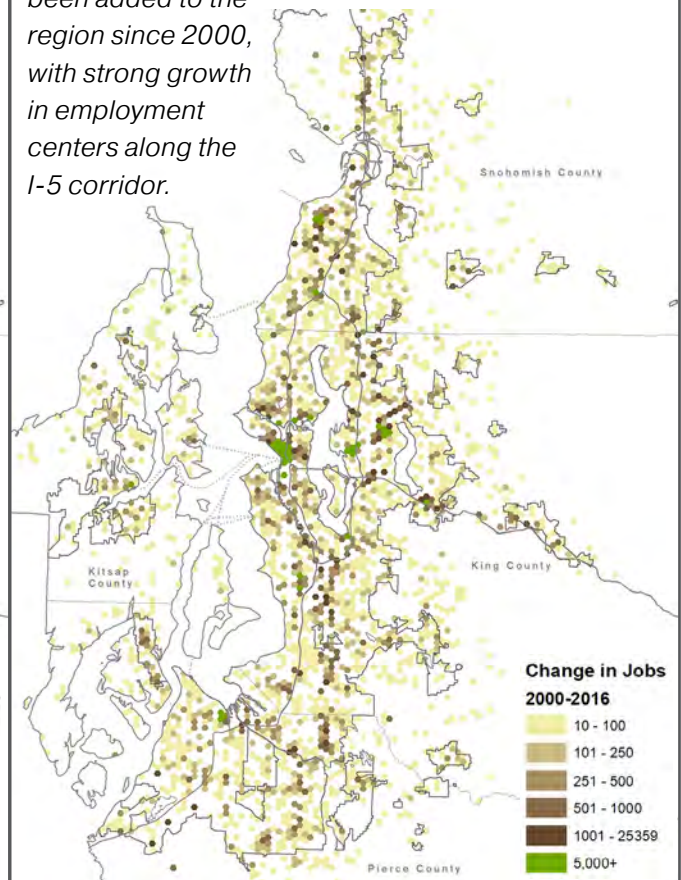
Where Growth is Happening

Growth has been focused in the urban area. In 2015, for example, 96% of new permitted housing was in cities and urban areas.

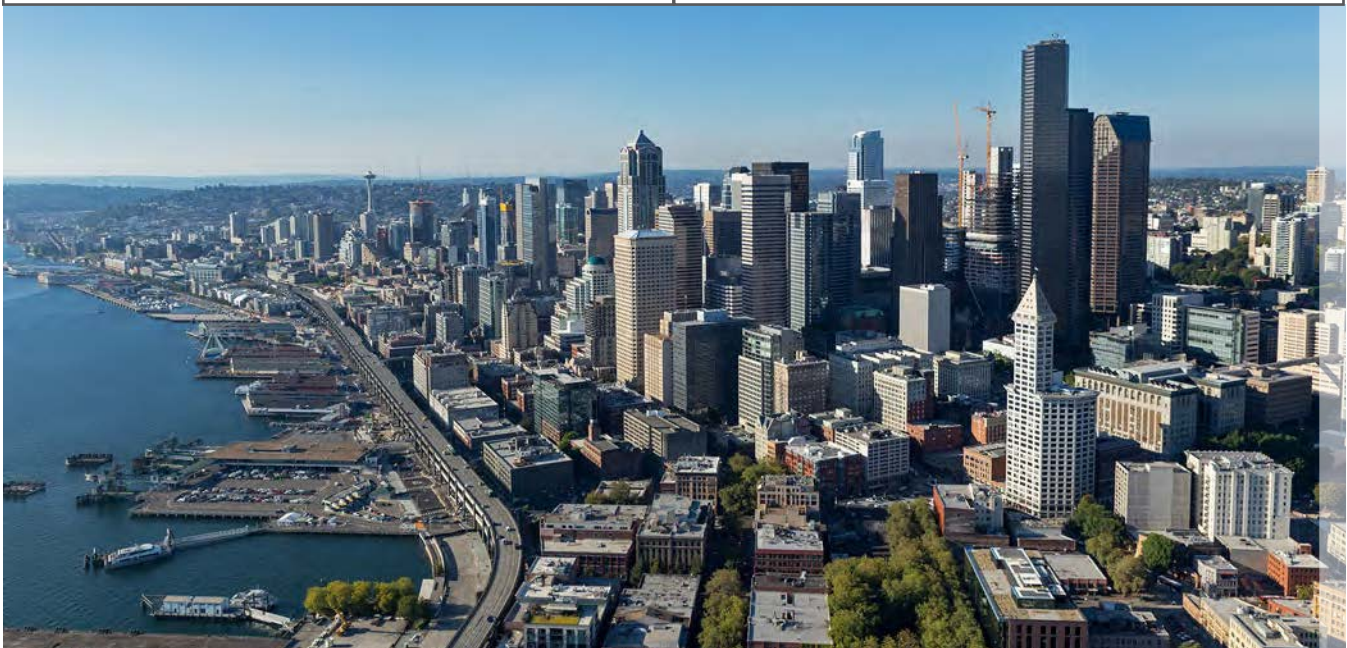


Source: PSRC Building Permit Data

290,000 jobs have been added to the region since 2000, with strong growth in employment centers along the I-5 corridor.



Source: PSRC Covered Employment Data



SCOPING and Environmental Impact Statement Process



Determination of Significance and Request for Comments on Scope of Environmental Impact Statement

PSRC has proposed to update and revise the long-range growth, economic, and transportation strategy for King, Pierce, Snohomish and Kitsap counties. PSRC, as lead agency for environmental review, has determined that the proposal to update VISION 2040 is likely to have significant adverse impacts on the environment, and is therefore issuing a Determination of Significance (DS). This notice announces PSRC's intent to prepare a supplemental environmental impact statement (SEIS) on the proposed update to VISION 2040, pursuant to RCW 43.21C.030(2)(c). The SEIS will contain new information and analysis, and may also build on data and analysis contained in existing environmental documents, any of which may be adopted or incorporated by reference as appropriate, according to State Environmental Policy Act (SEPA) rules. The process will integrate SEPA and GMA to allow for consideration of environmental information as well as public input, and to assist decision makers in meeting the goals of GMA while identifying and mitigating probable significant adverse environmental impacts under SEPA.

*The official comment period on the scope of the SEIS will run through
Monday, March 19, 2018.*

Under the SEPA process (WAC 197-11-408), PSRC is completing a scoping period to inform the environmental review process for the VISION 2040 update. Pursuant to SEPA, PSRC is notifying the public of the intent to prepare an SEIS

so that residents, jurisdictions, agencies, and tribes have an opportunity to comment on the scope of the impacts to be analyzed. Affected members of the public, jurisdictions, agencies, and tribes are invited, by this notice, to comment on alternatives, mitigation measures, probable significant adverse impacts, and licenses or other approvals that may be required. The method and opportunities for comment are provided on page 11.

Input on Environmental Review

PSRC is seeking input on environmental issues for analysis.

Natural and built environment. PSRC has identified the following environmental areas for potential discussion in the SEIS:

- Land use and population; employment; housing; transportation; air quality; ecosystems; water quality; public services and utilities; parks and recreation; environmental health; energy; visual quality and aesthetic resources.
- The scoping process may be used to expand or narrow the environmental areas that need updated analysis.

Additional issues that may be addressed. In addition to the areas listed above, PSRC contemplates that environmental analysis may address the following subjects, which may be modified in response to public comments and further analysis:

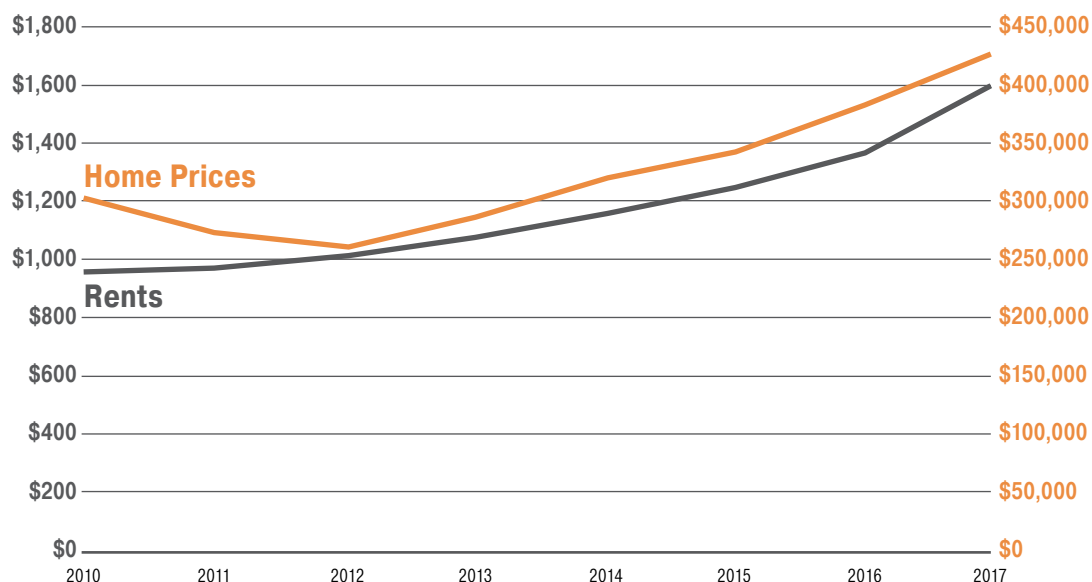
- Housing affordability; economic inequality; social equity and access to opportunity; healthy communities; climate change adaptation and mitigation; demographic shifts or changing needs; and funding for infrastructure and other improvements.
- Some issues may be addressed by existing information in the VISION 2040 Environmental Impact Statement (EIS). Other issues may require new information or analysis.

Scoping Question:

What issues should be considered for environmental review?

Increasing Median Housing Costs

Nationally, the region is at or near the top among peer regions in annual housing cost increases.



Sources: Dupre+Scott, Zillow

Input on Assumptions, Themes, and Issues

PSRC is seeking input on key assumptions to inform the plan update. This SEIS will build on the VISION 2040 EIS and include information analyzing the environmental impacts of updating VISION 2040.

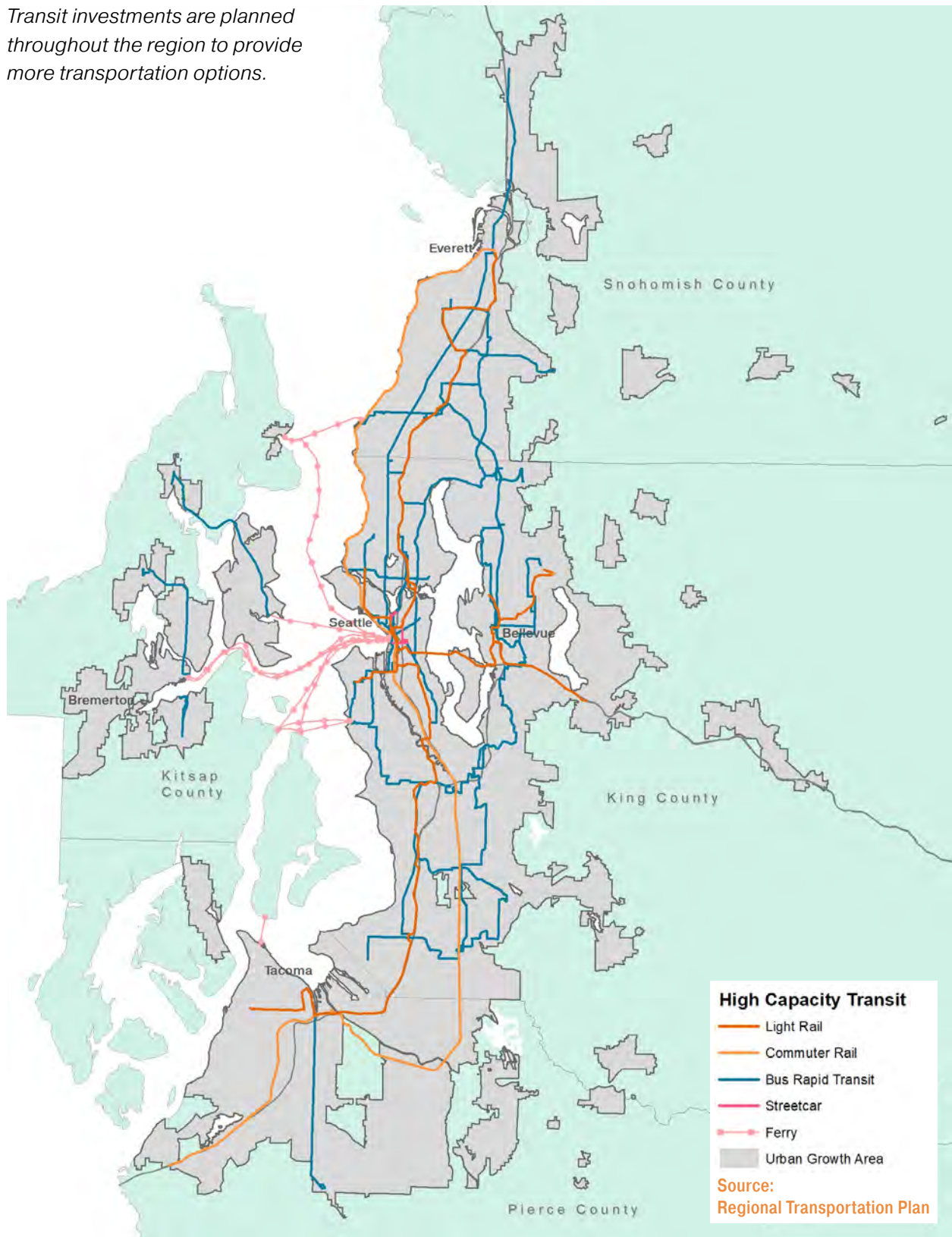
- **Plan for 2050.** A new regional forecast will show expected employment and population through 2050. PSRC is planning for 1.8 million more people and 1.2 million jobs by 2050.
- **Implement the Growth Management Act.** VISION 2050 will continue to further the Growth Management Act's objectives of preventing sprawl; conserving farmlands, forests, and open spaces; supporting more compact, people-oriented communities; focusing a significant amount of new employment and housing into vibrant urban centers; and coordinating between local governments.
- **Use VISION 2040 as starting point.** PSRC will build on VISION 2040's current framework — goals, policies, and Regional Growth Strategy — as the starting point for developing VISION 2050.
- **Focus on emerging and important issues.** To efficiently use public resources and time, the plan update will focus on a limited set of issues that may benefit from additional regional discussion, coordination, and planning. Issues such as housing affordability, climate change, social equity, and shared economic prosperity have been discussed as key regional challenges.
- **Reflect the diversity of the region.** The plan update will seek to reflect the demographic, cultural, geographic, and economic diversity of the region.
- **Review trends and actions.** Key data trends will inform the update, as well as progress towards implementing the actions contained in VISION 2040. The update will identify actions and roles to realize the goals of VISION 2050 and outcome measures from which to measure progress.
- **Integrate recent initiatives.** The update will consider recent initiatives of PSRC and partners, such as recent local comprehensive plan updates, the Growing Transit Communities Strategy, Puget Sound Clean Air Agency climate change targets, the Puget Sound Partnership Action Agenda, and the Regional Centers Framework Update.
- **Acknowledge and leverage major regional investments.** Since VISION 2040 was adopted, voters have approved two Sound Transit ballot measures to expand high-capacity transit. Other regional transit agencies have expanded service, local governments have built key projects, and the state adopted Connecting Washington to fund major transportation projects. The update will address the impact of these investments on regional policies and strategies.
- **Update the document.** PSRC will review the existing plan for out-of-date information or statutory changes since the 2008 adoption of VISION 2040. PSRC will also look for opportunities to make VISION 2050 more accessible and usable.

Scoping Questions:

What regional issues should the plan address? What information should guide the update?

Planned Regional Transit System (2040)

Transit investments are planned throughout the region to provide more transportation options.



Input on framework for considering modifications to growth strategy.

One purpose of this scoping process is to gain information so that PSRC can craft a limited range of alternatives for analysis within the Draft SEIS. The existing Regional Growth Strategy will be considered in the context of recent and projected trends, adopted plans, infrastructure investments, and broad goals for the region. The wide range of alternatives studied for the VISION 2040 EIS provides a robust starting point for this process. Within the range of alternatives previously studied, several options may be available to modify the existing Regional Growth Strategy to more effectively achieve the region's sustainability goals. The alternatives that will be developed will use the same assumptions and forecasts for growth through the year 2050.

- **No Action Alternative.** A “no action” alternative must be evaluated in accordance with SEPA. In this proposal, the no-action alternative will be defined as continuing forward with the adopted growth patterns in VISION 2040, to essentially “stay the course.” The existing Regional Growth Strategy would be extended to reflect forecasts for 2050 without amendment or revision to growth shares or regional geographies.
- **2050 Modified Regional Growth Strategy Alternative(s).** A modified 2050 growth strategy(ies) may be defined and evaluated with modified regional geographies, adjusted growth allocations among counties and regional geographies, and/or actions to promote the desired pattern of future population and jobs.

Scoping Question:

How should the region's growth strategy be updated to plan for 2050?





Preview **PROCESS**

Schedule and Anticipated Milestones in SEPA Process

PSRC anticipates that a Draft SEIS will be completed in summer 2019 and a Final SEIS will be issued in spring 2020.

Engagement Opportunities

There will be many opportunities to provide input throughout the planning process, including PSRC meetings, workshops, surveys, online open houses, and opportunities to comment on the draft plan and environmental review document.

PSRC is accepting comments on the VISION 2050 scoping from Friday, February 2, 2018, through Monday, March 19, 2018. We want to hear from you! What issues should be considered for environmental review? What regional issues should the plan address? What information should guide the update? How should the region's growth strategy be updated to plan for 2050?

There Are Several Ways to Comment:

SEPA Responsible Official: Erika Harris, AICP, Senior Planner

E-mail: VISION2050@psrc.org

U.S. Mail: ATTN: VISION 2050 Comment, 1011 Western Avenue, Suite 500, Seattle, WA 98104

In Person: March 1, 2018 / Growth Management Policy Board meeting / 10 AM

Fax: ATTN: VISION 2050 Comment, 206-587-4825

Visit the website: <https://www.psrc.org/vision>

Listening Sessions:

King County / February 13 / 3-5 PM Union Station, Ruth Fisher Board Room
401 South Jackson Street, Seattle 98104

Pierce County / February 20 / 3-5 PM Fife Community Center
2111 54th Avenue East, Fife 98242

Snohomish County / February 22 / 3-5 PM..... Lynnwood City Hall
19100 44th Avenue West, Lynnwood 98036

Kitsap County / February 27 / 3-5 PM Norm Dicks Government Center
345 6th Street, Bremerton 98337

What is **PSRC**?



The Puget Sound Regional Council (PSRC) is the regional transportation, economic development, and growth planning agency for the central Puget Sound — King, Pierce, Snohomish and Kitsap counties. It serves as a forum for cities, counties, ports, transit agencies, tribes, and the state to work together on important regional issues.

Key responsibilities include:

- Long range growth, economic, and transportation planning
- Transportation funding
- Economic development coordination
- Regional data
- Technical assistance

The elected leaders of King, Pierce, Snohomish and Kitsap counties, the region's cities and towns, port districts, transit agencies, and tribes direct PSRC's work. Once a year, these elected officials meet as a General Assembly to vote on major decisions and elect new leadership. Each month, an Executive Board makes decisions on behalf of the General Assembly with the input of several advisory boards made up of local elected officials and representatives of business, labor, environmental and community interests, as well as input from the public at large.



Funding for this document provided in part by member jurisdictions, grants from U.S. Department of Transportation, Federal Transit Administration, Federal Highway Administration and Washington State Department of Transportation. PSRC fully complies with Title VI of the Civil Rights Act of 1964 and related statutes and regulations in all programs and activities. For more information, or to obtain a Title VI Complaint Form, see <https://www.psrc.org/title-vi> or call 206-587-4819.

Americans with Disabilities Act (ADA) Information:

Individuals requiring reasonable accommodations may request written materials in alternate formats, sign language interpreters, physical accessibility accommodations, or other reasonable accommodations by contacting the ADA Coordinator, Thu Le, at 206-464-6175, with two weeks' advance notice. Persons who are deaf or hard of hearing may contact the ADA Coordinator, Thu Le, through TTY Relay 711.

Additional copies of this document may be obtained by contacting:

Puget Sound Regional Council
Information Center
1011 Western Avenue, Suite 500
Seattle, Washington 98104-1035
206-464-7532 • info@psrc.org • psrc.org

back cover image courtesy of:
Bryan Reinbold, Local 302 Union Operator



Puget Sound Regional Council



VISION 2050

Let's talk about growth!



The Puget Sound Regional Council is extending the region's growth plan to 2050. **VISION 2050** will build on the region's existing plan, VISION 2040, to keep the central Puget Sound region healthy and vibrant as it grows.

As the region prepares to add more people and more jobs in the coming decades — about 1.8 million more people by 2050 — **VISION 2050** will provide a guide for sustaining a healthy environment, thriving communities, and a strong economy. **VISION 2050** will identify the challenges we should tackle together as a region and renew the vision for what we want to achieve in the next 30 years.

PSRC wants to hear from you to help shape the plan update. Join the regional conversation this February at a PSRC listening session. Presentations will begin at 3:15PM.

What is the current growth plan?

The region's current growth plan VISION 2040 was adopted in 2008. It has policies and strategies that focus growth within an established urban growth area. It aims to keep rural areas, farms, and forests intact and thriving. Within cities, new housing and jobs for a growing population are focused in centers to create and sustain vibrant urban neighborhoods.

get involved!	King County	Tuesday / February 13 / 3-5PM / Union Station, Ruth Fisher Board Room 401 South Jackson Street, Seattle 98104
	Pierce County	Tuesday / February 20 / 3-5PM / Fife Community Center 2111 54 th Avenue East, Fife 98242
	Snohomish County	Thursday / February 22 / 3-5PM / Lynnwood City Hall 19100 44 th Avenue West, Lynnwood 98036
	Kitsap County	Tuesday / February 27 / 3-5PM / Norm Dicks Government Center 345 6 th Street, Bremerton 98337

For more information, please email VISION2050@psrc.org or call 206-464-7090.

Interested in attending? Let us know and sign up for updates at <https://www.psrc.org/vision>.



Puget Sound Regional Council



2018 WASHINGTON STATE LEGISLATIVE SESSION Comprehensive Plan Update Cycle Amendment

HB 1089 - 2017-18: Amending the Schedule for Updates to the Comprehensive plan of Kitsap County

The following bill language is intended to achieve two goals:

- Improve consistency in regional planning between Kitsap County and the rest of the Central Puget Sound region (King, Pierce and Snohomish Counties).
- Improve coordination with key data points necessary for accurate planning in local jurisdictions' comprehensive plan updates.

Per statute, Kitsap County lags one year behind the other Central Puget Sound counties in the development of its Comprehensive Plan. This has hampered full coordination of capital facilities and other planning between its adjacent jurisdictions.

Additionally, the 2023 deadline for Central Puget Sound jurisdictions creates timing issues with key data sources such as the US Census and OFM population projections. Those, combined with the need to complete Buildable Land reports, make a 2023 deadline to update local plans extremely difficult and costly if not impossible. This issue will only get worse in future eight-year update cycles (2031 and 2039)

The proposed language below addresses these issues by syncing Kitsap County's update deadline with the rest of the Central Puget Sound and postpones comprehensive plan updates for those jurisdictions to every ten years (2025, 2035, 2045, etc.).

If you have any questions regarding our proposal, please contact Eric Baker, Kitsap County Policy Manager, at (360) 337-4495 or ebaker@co.kitsap.wa.us.

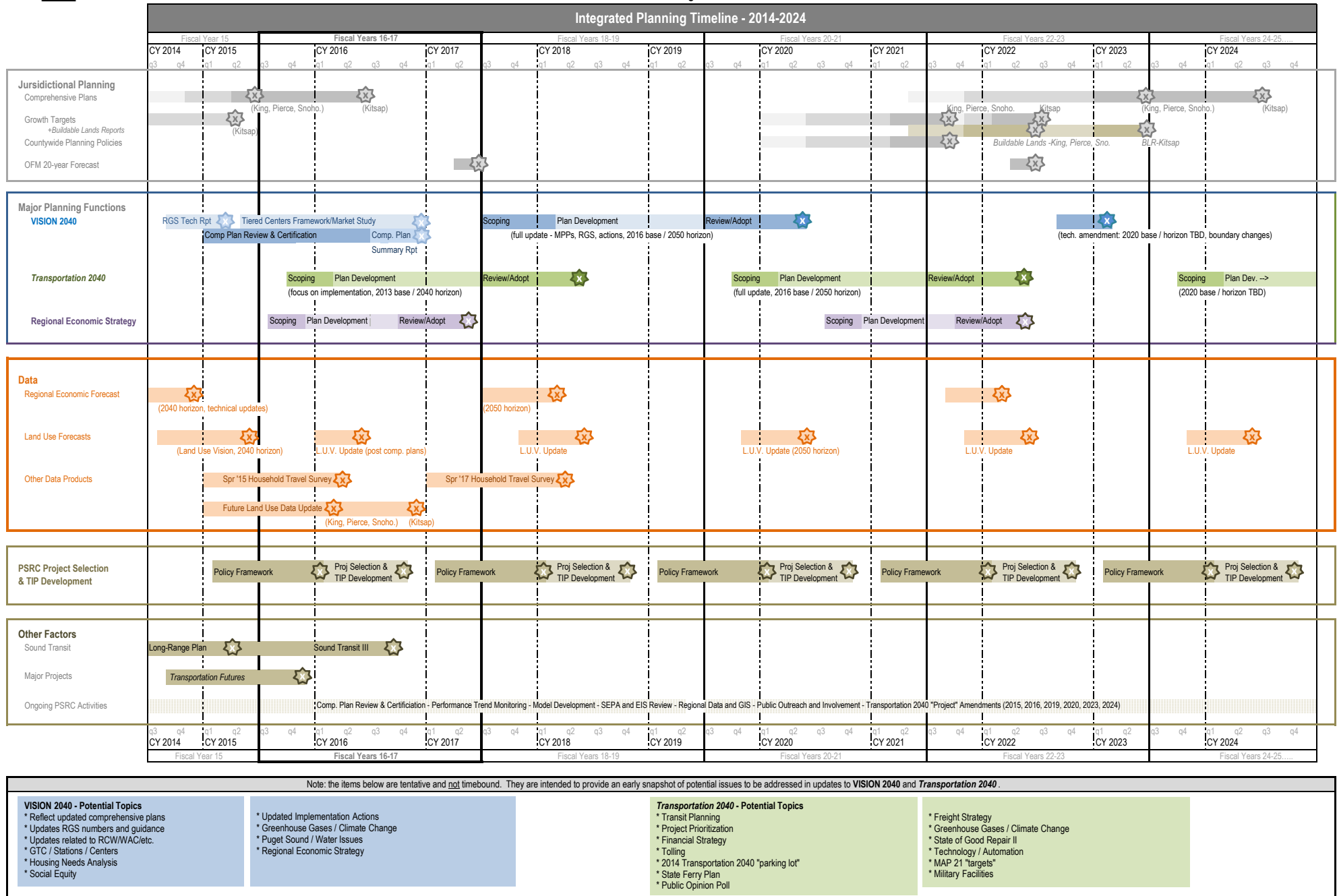
Sec. 1. RCW 36.70A.130 and 2012 c 191 s 1 are each amended to read as follows:

(5) Except as otherwise provided in subsections (6) and (8) of this section, following the review of comprehensive plans and development regulations required by subsection (4) of this section, counties and cities shall take action to review and, if needed, revise their comprehensive plans

and development regulations to ensure the plan and regulations comply with the requirements of this chapter as follows:

- (a) On or before June 30, 2015, and every ~~eight~~ ten years thereafter, for King, Kitsap, Pierce, and Snohomish counties and the cities within those counties;
- (b) On or before June 30, 2016, and every ~~eight~~ ten years thereafter, for Clallam, Clark, Island, Jefferson, ~~Kitsap~~, Mason, San Juan, Skagit, Thurston, and Whatcom counties and the cities within those counties;
- (c) On or before June 30, 2017, and every ~~eight~~ ten years thereafter, for Benton, Chelan, Cowlitz, Douglas, Kittitas, Lewis, Skamania, Spokane, and Yakima counties and the cities within those counties; and
- (d) On or before June 30, 2018, and every ~~eight~~ ten years thereafter, for Adams, Asotin, Columbia, Ferry, Franklin, Garfield, Grant, Grays Harbor, Klickitat, Lincoln, Okanogan, Pacific, Pend Oreille, Stevens, Wahkiakum, Walla Walla, and Whitman counties and the cities within those counties.

Figure 2



Draft 2018 Kitsap Regional Coordinating Council (KRCC) Workplan Proposal

Draft v. 1-15-18

KRCC Chair Garrido and KRCC Vice Chair Erickson proposed the following 2018 workplan for KRCC during their January 9, 2018 leadership meeting.

“Big Picture” Priorities

The KRCC Chair and Vice Chair proposed the following “big picture” priorities for KRCC in 2018:

- Address how Puget Sound Regional Council (PSRC) planning efforts affect local jurisdictions across Kitsap County.
- Develop consistency among KRCC jurisdictions regarding land use planning (when appropriate).

Focus Areas

To address how PSRC planning efforts affect local jurisdictions across Kitsap, Chair Garrido and Vice Chair Erickson propose that KRCC focus on (a) amending the Kitsap Countywide Planning Policies (CPPs), (b) exploring the connections between Kitsap growth patterns, the Growth Management Act (GMA), and economic development; and (c) proposing countywide and regional projects that improve Kitsap’s quality of life and have the support from elected officials.

PSRC Effort	KRCC Focus Area
Regional Centers Framework and implications for Countywide Centers	Amend the Countywide Planning Policies
Development of Vision 2050	Explore the connections between Kitsap growth patterns, the Growth Management Act, and economic development
Regional and Countywide Transportation Competitions	Propose countywide and regional projects that improve Kitsap’s quality of life and have support from elected officials.

To develop consistency among KRCC jurisdictions regarding land use planning (when appropriate), Chair Garrido and Vice Chair Erickson propose that KRCC focus on (a) analyzing annexation trends and discussing countywide annexation policies; (b) reviewing zoning practices across Kitsap County and identifying any inconsistencies or gaps between jurisdictions.

Land Use Planning Topic	KRCC Focus Area
Annexation	Analyze annexation trends and discuss countywide annexation policies.
Zoning	Review zoning practices across Kitsap County and identify any inconsistencies or gaps between jurisdictions.