



Kitsap Regional Coordinating Council

2044 INITIAL GROWTH TARGETS

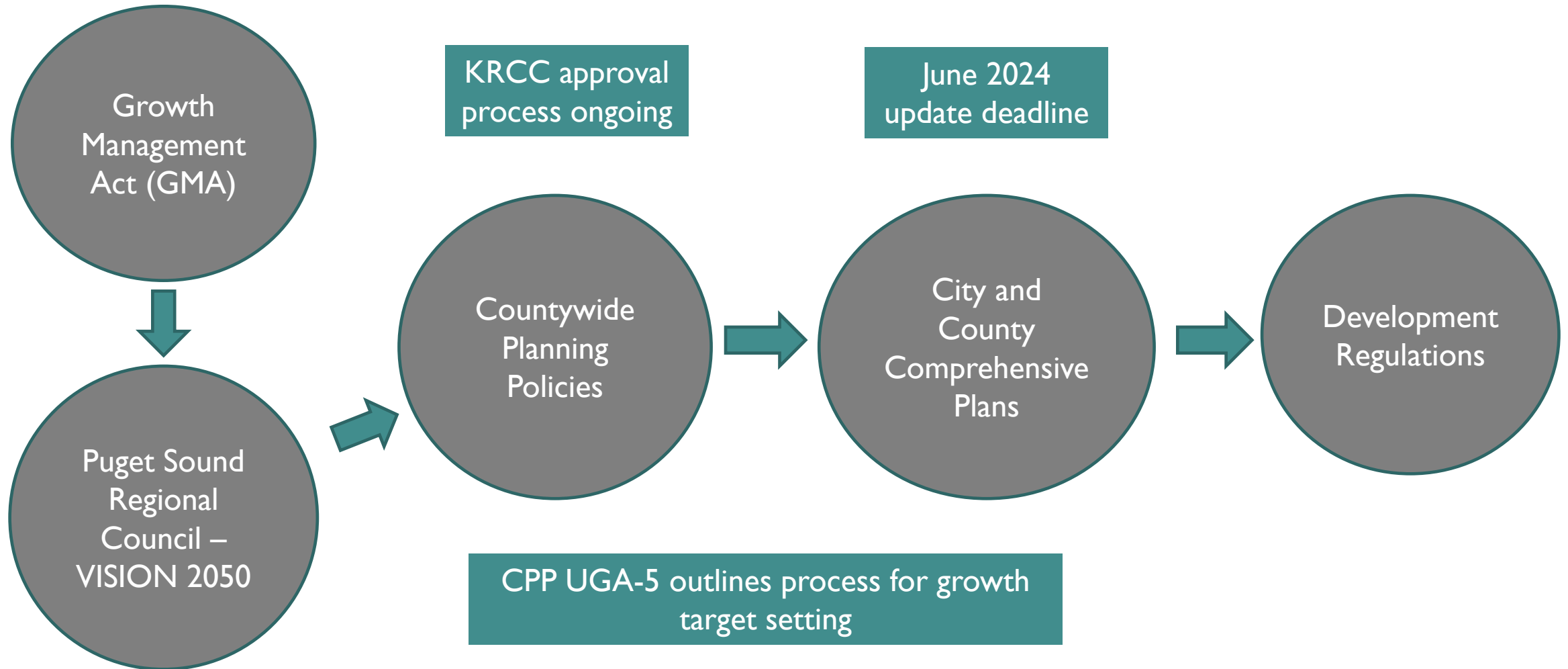
PlanPOL Meeting

October 19, 2021

PRESENTATION GOALS

- Provide the PlanPOL of overview of how state, regional, and local planning processes connect on growth target setting (population and employment)
- Provide an overview of the process to adopt new growth target (population and employment)
- Answer questions from the PlanPOL

BACKGROUND – RELATIONSHIP BETWEEN STATE/REGIONAL/LOCAL PLANS



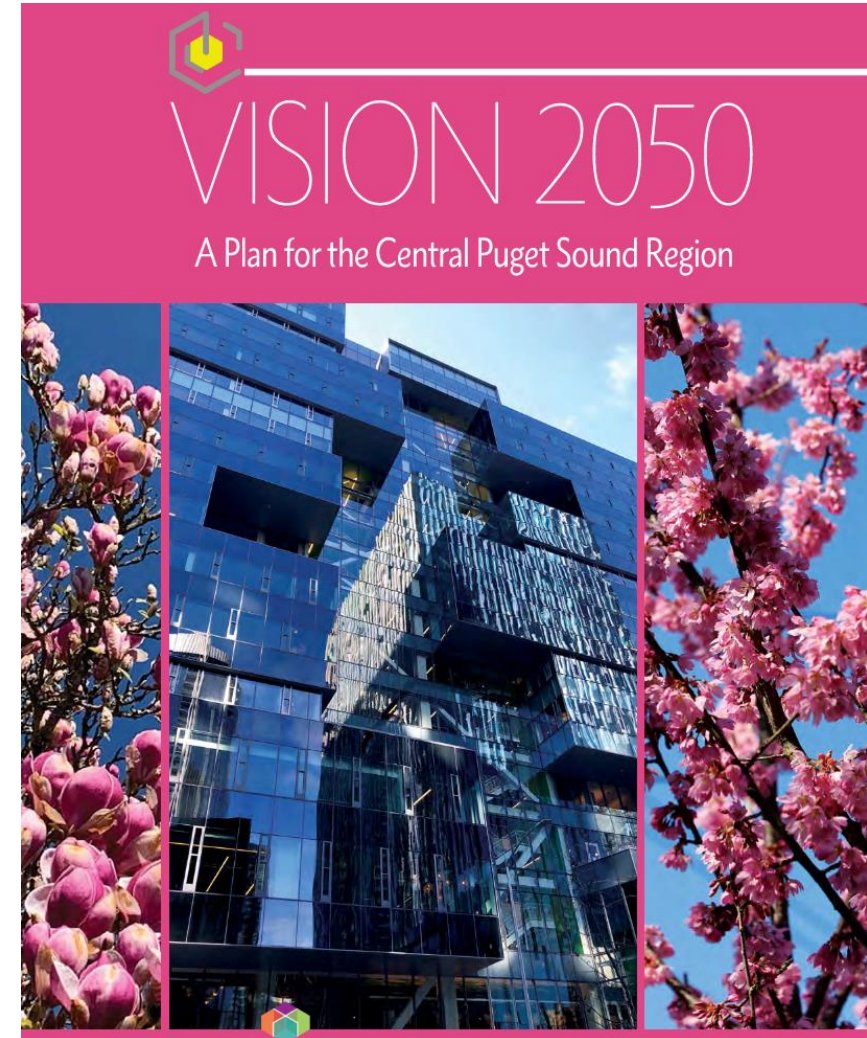
GROWTH MANAGEMENT ACT

RCW 36.70A.110 – Comprehensive Plans – Urban Growth Areas

(2) Based upon the growth management population projection made for the county by the office of financial management, the county and each city within the county shall include areas and densities sufficient to permit the urban growth that is projected to occur in the county or city for the succeeding twenty-year period...As part of this planning process, each city within the county must include areas sufficient to accommodate the broad range of needs and uses that will accompany the projected urban growth including, as appropriate, medical, governmental, institutional, commercial, service, retail, and other nonresidential uses.

VISION 2050

- VISION 2050's multicounty planning policies and regional growth strategy guide how the four-county region grows.
- Multicounty planning policies and regional growth strategy implemented through Countywide Planning Policies, comprehensive plans, and development regulations.



PSRC GUIDANCE FOR GROWTH TARGETS

- Guidance objectives:
- Consistency with Vision 2050 Regional Growth Strategy
- Provides best practices and methodologies to support a more consistent approach to target setting across the region
- Support data and policy-informed decisions about growth
- Information adjusted to 2044 planning horizon (from 2050)

VISION 2050 PLANNING RESOURCES

Guidance for Growth Targets to Implement VISION 2050



March 2021

VISION 2050 – REGIONAL GROWTH STRATEGY

Regional Growth Strategy County Population and Employment Control Totals 2017–2044 (Illustrative)

| | POPULATION | | EMPLOYMENT | |
|---------------|------------------|-------------|----------------|-------------|
| | Total | % Share | Total | % Share |
| King | 724,000 | 50% | 547,000 | 59% |
| Kitsap | 80,000 | 5% | 45,000 | 5% |
| Pierce | 302,000 | 21% | 157,000 | 17% |
| Snohomish | 353,000 | 24% | 180,000 | 19% |
| Region | 1,458,000 | 100% | 930,000 | 100% |

Source PSRC Vision 2050 Planning Resources

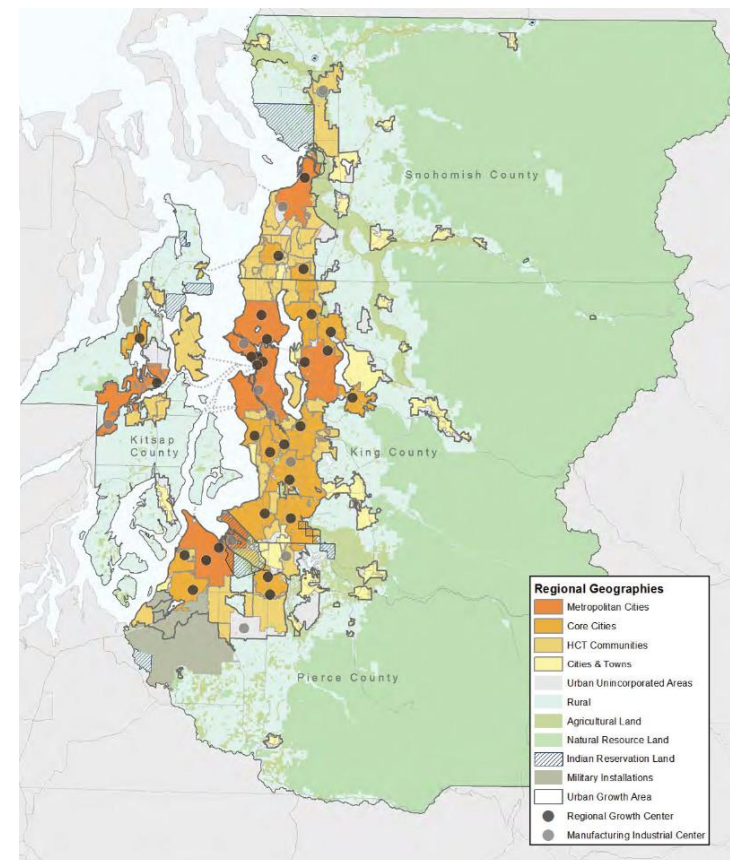


Figure 1 Regional Growth Strategy — Population Growth 2017–2044 (Illustrative)

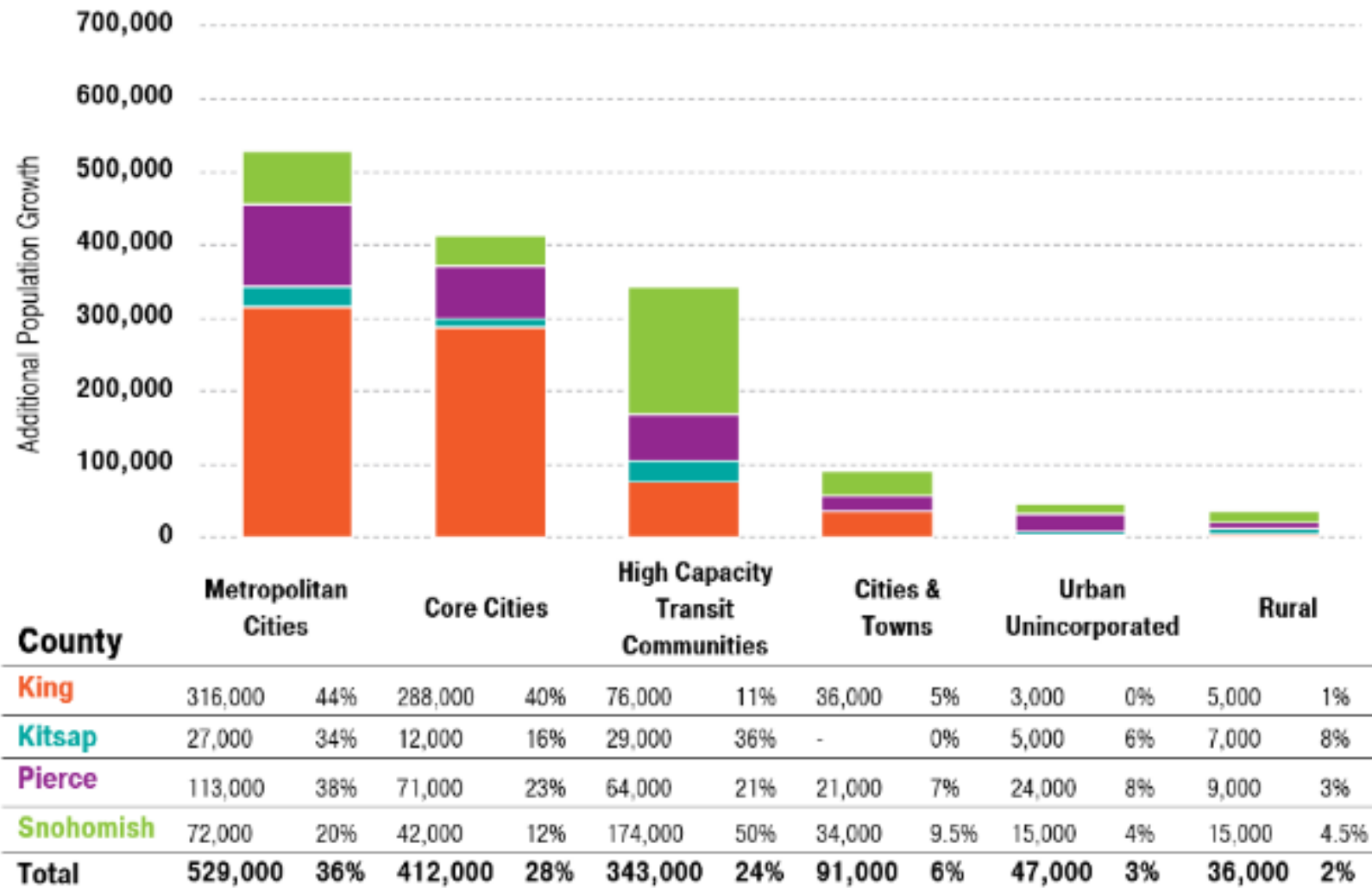
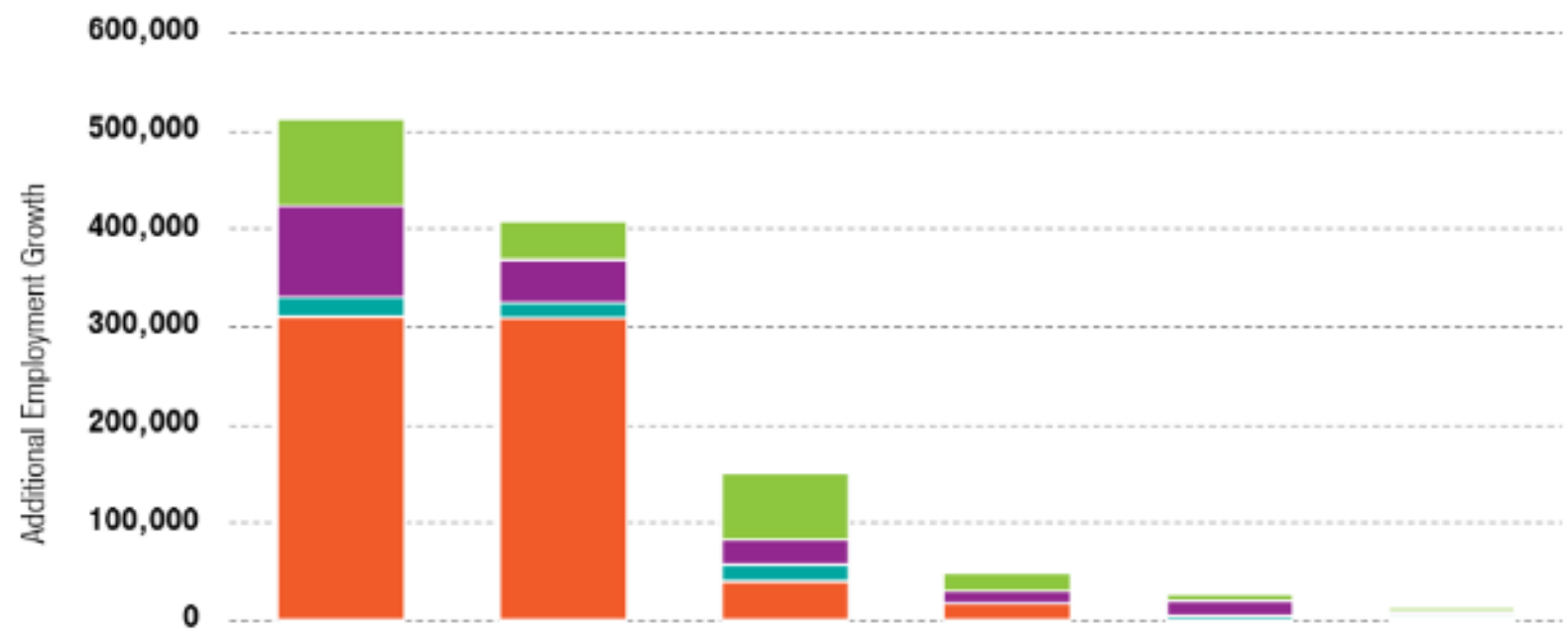


Figure 2 Regional Growth Strategy — Employment Growth 2017–2044 (Illustrative)



| County | Metropolitan Cities | | Core Cities | | High Capacity Transit Communities | | Cities & Towns | | Urban Unincorporated | | Rural | |
|--------------|---------------------|------------|----------------|------------|-----------------------------------|------------|----------------|-----------|----------------------|-----------|---------------|-----------|
| King | 250,000 | 46% | 248,000 | 45% | 32,000 | 6% | 14,000 | 3% | 1,000 | 0% | 2,000 | 0% |
| Kitsap | 16,000 | 35% | 12,000 | 26% | 14,000 | 32% | - | 0% | 1,000 | 2% | 2,000 | 5% |
| Pierce | 76,000 | 48% | 35,000 | 23% | 23,000 | 15% | 10,000 | 7% | 9,000 | 6% | 3,000 | 2% |
| Snohomish | 71,000 | 39% | 31,000 | 17% | 55,000 | 30% | 14,000 | 8% | 6,000 | 2% | 3,000 | 2% |
| Total | 412,000 | 44% | 327,000 | 35% | 124,000 | 13% | 39,000 | 4% | 17,000 | 2% | 10,000 | 1% |

RGS ALLOCATIONS VS. CURRENT 2036 POPULATION DIST. (CPP)

RGS - VISION 2050

- **Metropolitan Cities 34%** – Bremerton and Bremerton UGA
- **Core City 16%** – Silverdale
- **High-Capacity Transit Communities 36%** – Bainbridge Island, Kingston, Port Orchard & Port Orchard UGA, Poulsbo and Poulsbo UGA
- **Urban Unincorporated 6%**
- **Rural Areas 8%**

Current adopted targets – 2036

- **Metropolitan Cities 23%** – Bremerton and Bremerton UGA
- **Core City 11%** – Silverdale
- **High-Capacity Transit Communities 35%** – Bainbridge Island, Kingston, Port Orchard & Port Orchard UGA, Poulsbo and Poulsbo UGA
- **Urban Unincorporated 8%**
- **Rural Areas 23%**

RGS ALLOCATIONS VS. CURRENT 2036 EMPLOYMENT TARGETS(CPP)

RGS – Vision 2050

- **Metropolitan Cities 35%** – Bremerton and Bremerton UGA
- **Core City 26%** – Silverdale
- **High-Capacity Transit Communities 32%** – Bainbridge Island, Kingston, Port Orchard & Port Orchard UGA, Poulsbo and Poulsbo UGA
- **Urban Unincorporated 2%**
- **Rural Areas 5%**

Current adopted targets -2036

- **Metropolitan Cities 42%** – Bremerton and Bremerton UGA
- **Core City 20%** – Silverdale
- **High-Capacity Transit Communities 27%** – Bainbridge Island, Kingston, Port Orchard & Port Orchard UGA, Poulsbo and Poulsbo UGA
- **Urban Unincorporated 3%**
- **Rural Areas 8%**

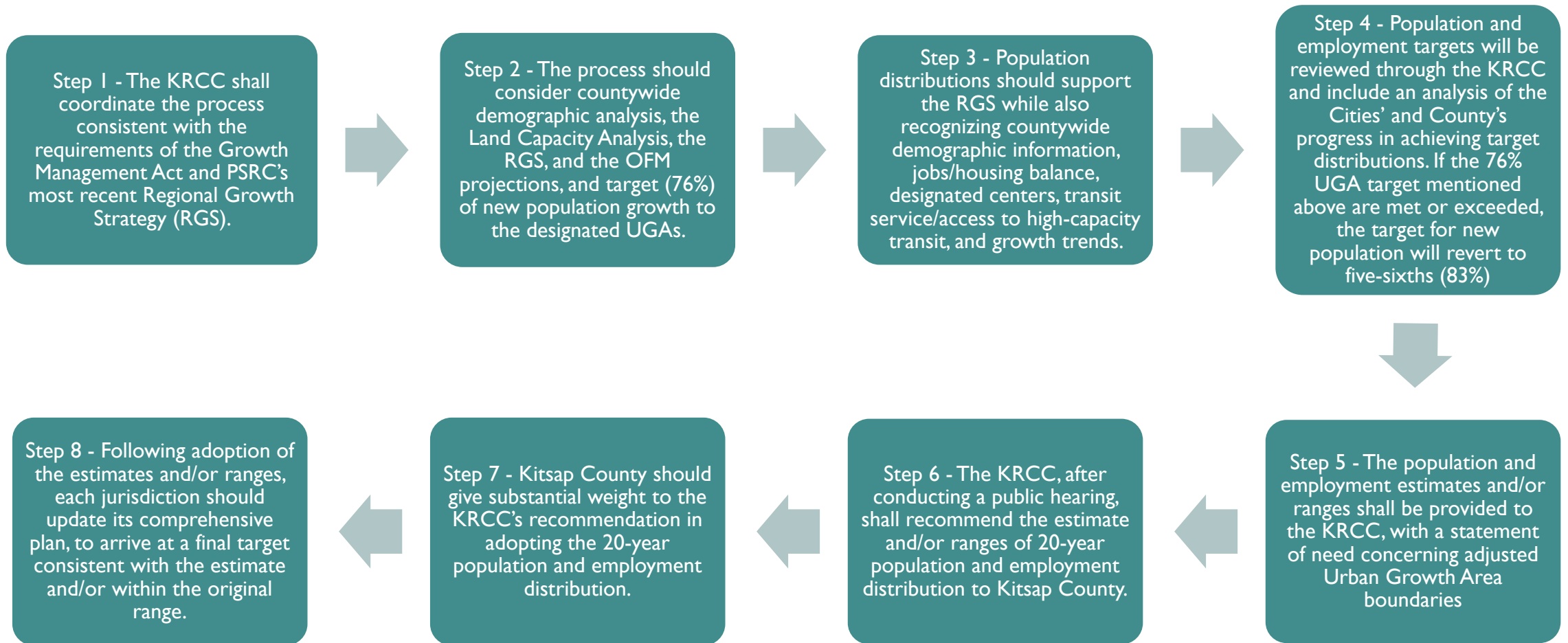
CONSIDERATIONS FOR TARGET SETTING

CURRENT CAPACITY VS. CAPACITY NEEDED FOR 2044

Exhibit 40. Population Capacity Summary

| Jurisdiction | Population 2012 | 2012-2036 Growth Target | 2012-2020 Population Growth | Remaining Target 2020-2036 | 2020 Population Capacity | Demand Minus Capacity |
|---------------------------|--------------------|-------------------------------|-----------------------------------|----------------------------------|--------------------------------|-----------------------------|
| City of Bainbridge Island | 23,090 | 5,570 | 1,980 | 3,590 | 5,301 | 1,711 |
| City of Bremerton | 39,650 | 12,432 | 2,100 | 10,332 | 16,896 | 6,564 |
| Bremerton UGA | 8,924 | 3,907 | 209 | 3,698 | 2,422 | -1,276 |
| Bremerton Total | 48,574 | 16,339 | 2,309 | 14,030 | 19,318 | 5,288 |
| City of Port Orchard | 11,780 | 8,778 | 2,990 | 5,788 | 16,250 | 10,462 |
| Port Orchard UGA | 14,505 | 6,110 | 465 | 5,645 | 3,552 | -2,093 |
| Port Orchard Total | 26,285 | 14,888 | 3,455 | 11,433 | 19,802 | 8,369 |
| City of Poulsbo | 9,360 | 1,192 | 2,190 | -998 | 4,581 | 5,579 |
| Poulsbo UGA | 473 | 3,786 | 9 | 3,777 | 965 | -2,812 |
| Poulsbo Total | 9,833 | 4,978 | 2,199 | 2,779 | 5,546 | 2,767 |
| Central Kitsap UGA | 22,527 | 6,842 | 1,092 | 5,750 | 4,956 | -794 |

TARGET SETTING PROCESS – CPP – UGA-5



CONSIDERATIONS MOVING FORWARD

As jurisdictions develop recommendations for growth targets this fall, they will consider the following:

- Consistency with the Regional Growth Strategy
- Review of CPP – UGA-5 - policy for the distribution of 20-year population and employment growth
- How adopted targets translate to necessary land use changes
- New Housing Element requirements to implement (HB 1220)



QUESTIONS?