



# Trends and Indicators

Kitsap Regional Coordinating Council  
Annual Retreat  
October 25, 2019



# Welcome!

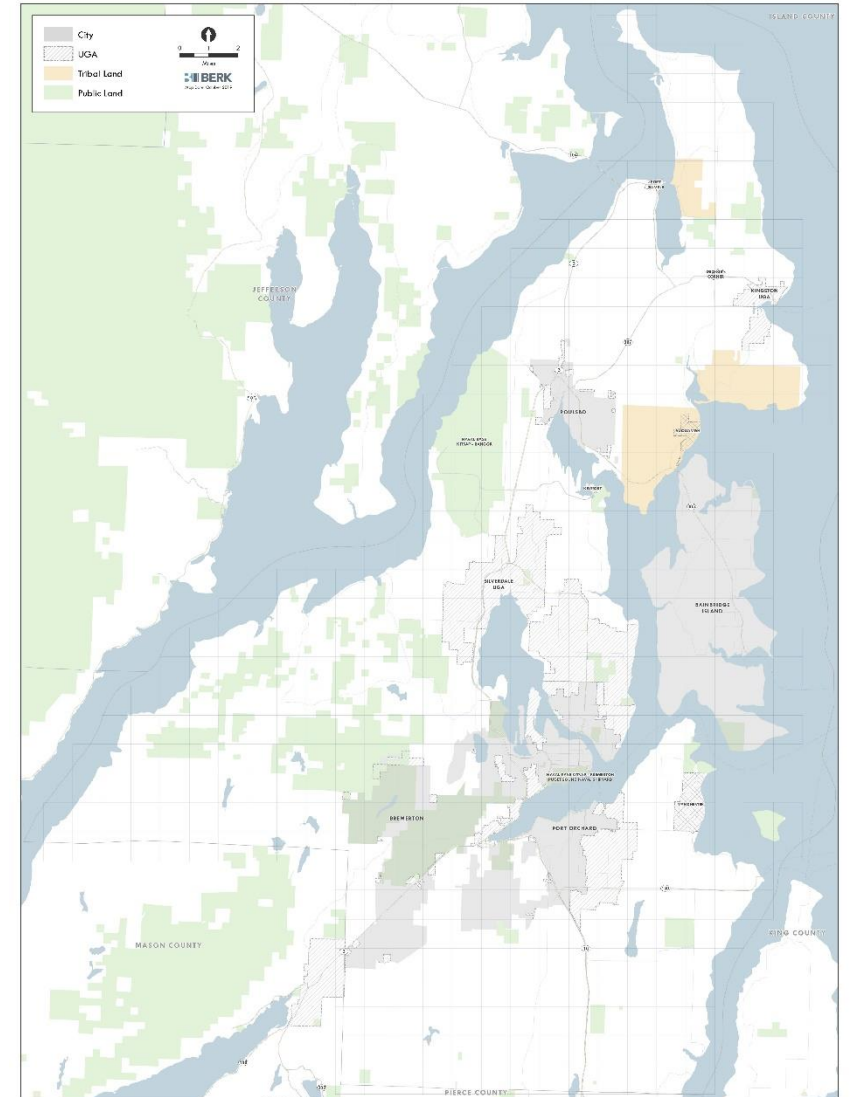
- Chair's comments
- Introductions
- Today's agenda
- Objectives



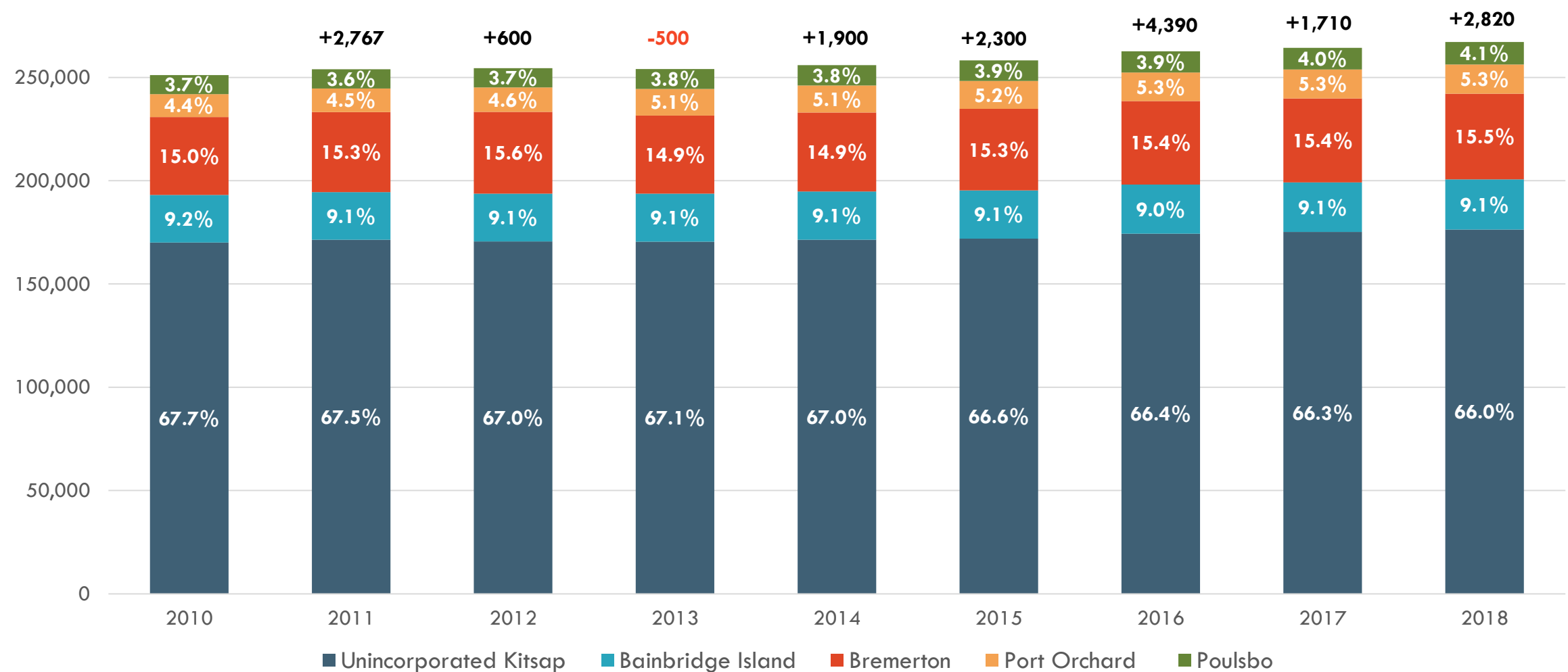
# Presentation

## ■ Growth trends and indicators

- ❑ Population and demographics
- ❑ Development activity
- ❑ Transportation indicators
- ❑ Natural environment indicators

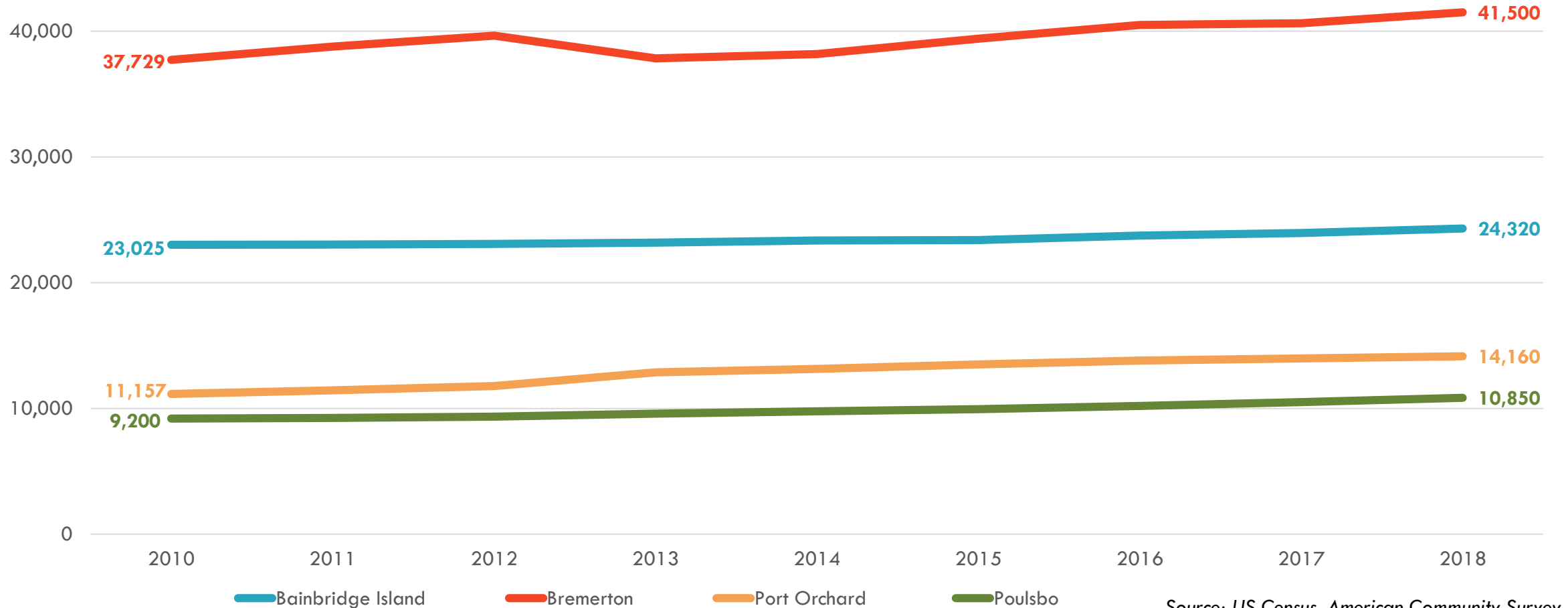


# Population Growth 2010 - 2018



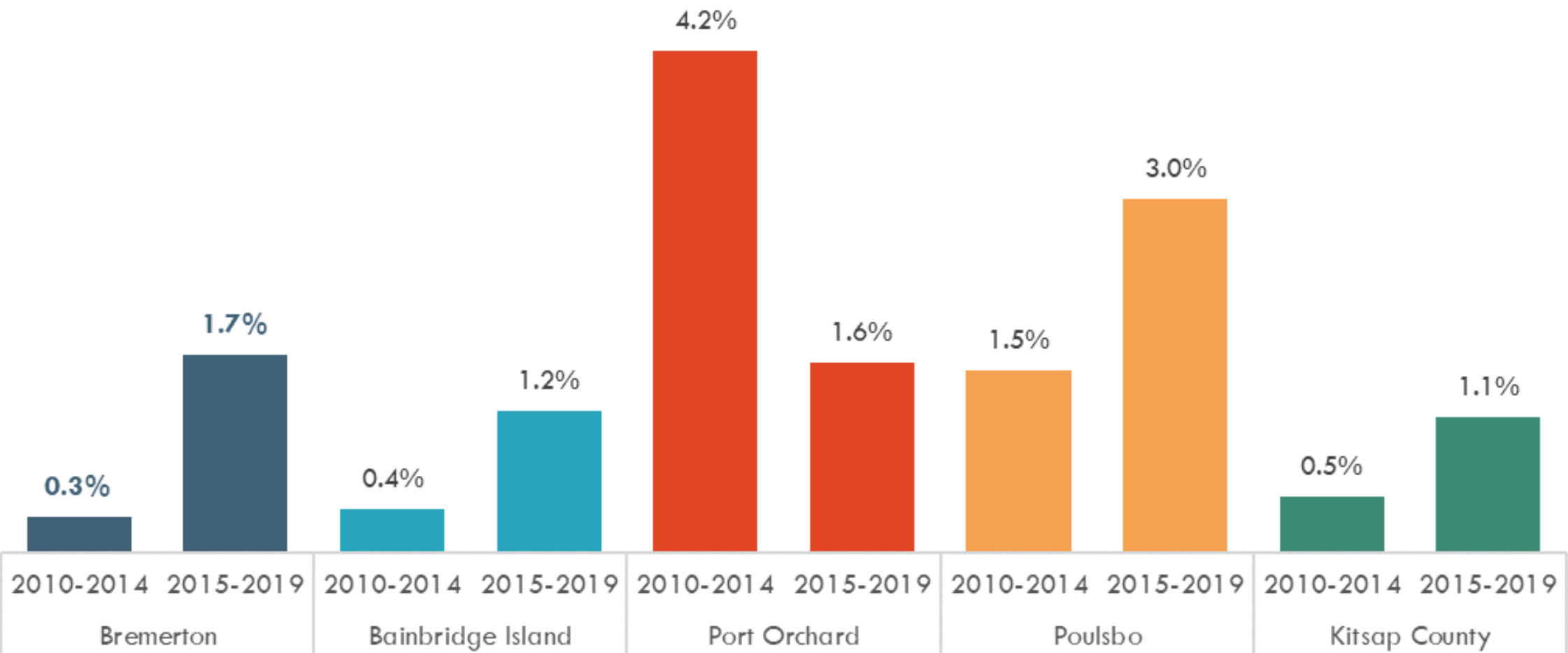
Source: US Census. American Community Survey

# Incorporated Only - Population Growth 2010 - 2018



# Population Compound Annual Growth Rate

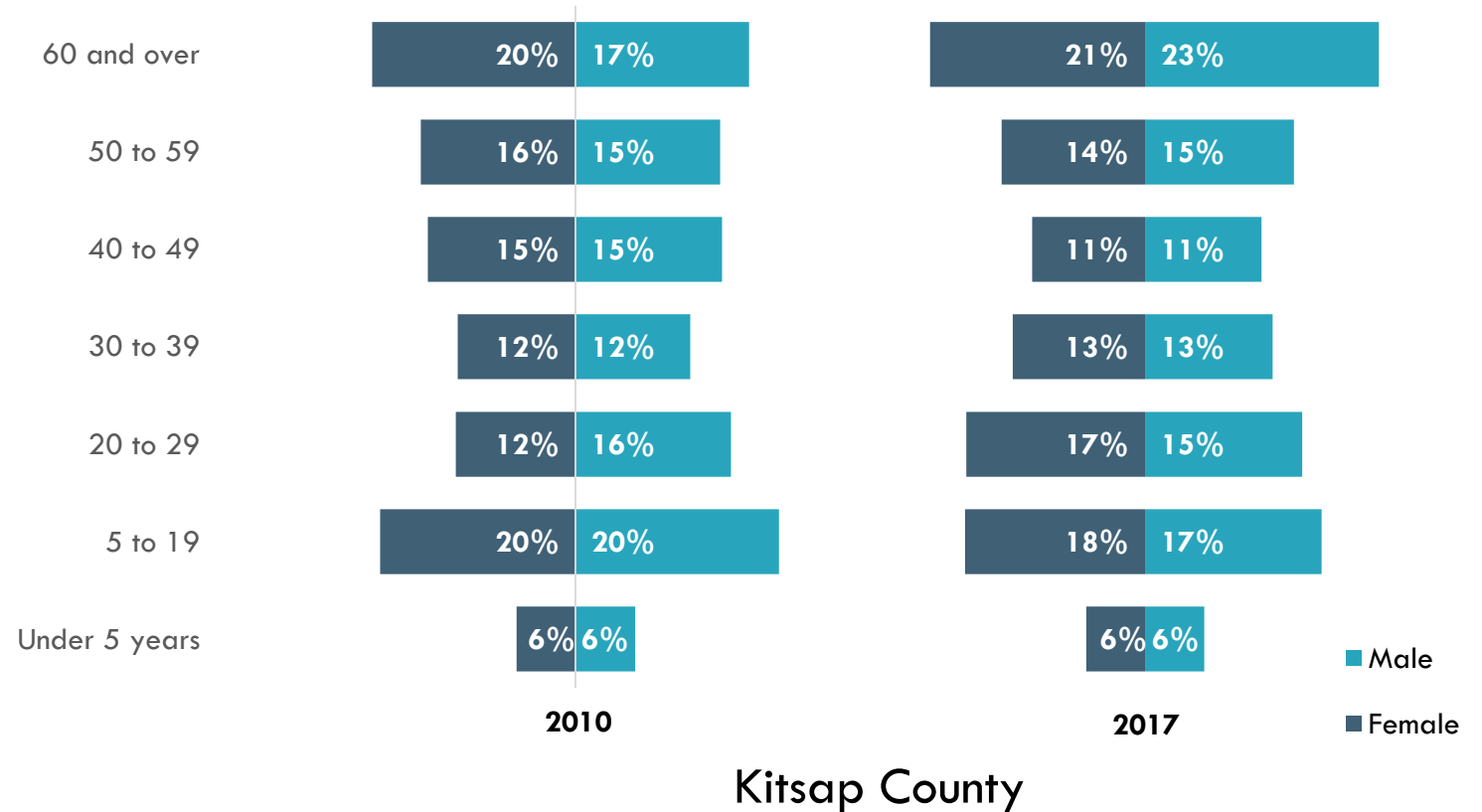
*Includes 2010 Annexations*





# Age and household size

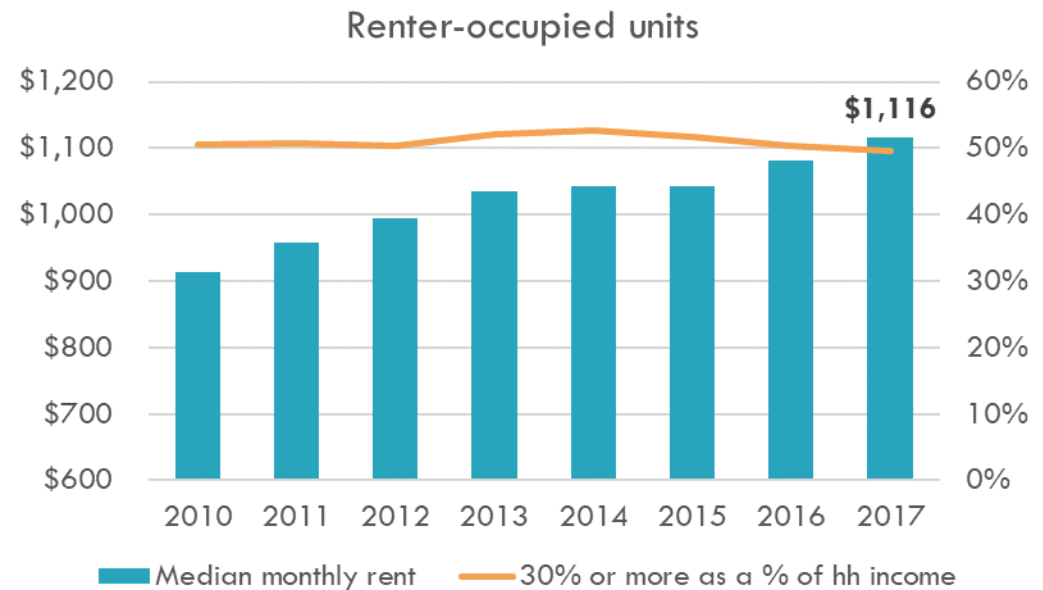
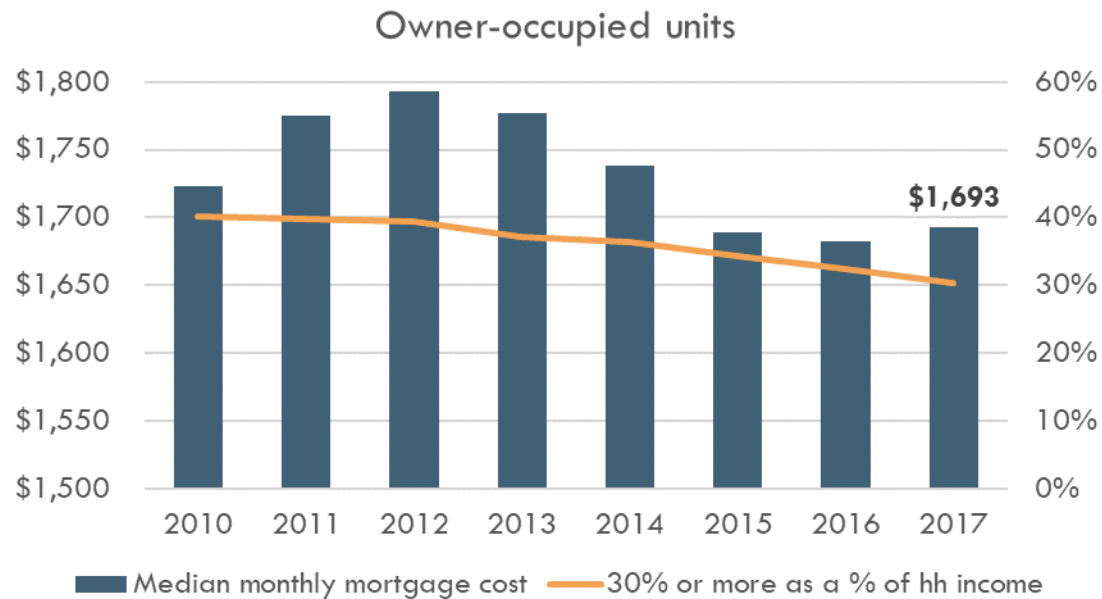
- Similar age distribution 2010 - 2017
- Average household size 2.0 – 2.5
  - 21% have 4+ persons
  - 26% are 1-person hhs



Source: US Census. American Community Survey

# Kitsap County housing

- Estimated 110,990 housing units in 2017
- Roughly 2/3 owner occupied
- 30-40% cost burden among home-owners, 50% for renters





# Housing Affordability

## Kitsap County Share of Cost Burdened Households

ACS	Owner	Renter	Total
2007-2011	26%	63%	38%
2012-2016	28%	61%	39%

HUD CHAS Tool: <https://www.huduser.gov/portal/datasets/cp.html>



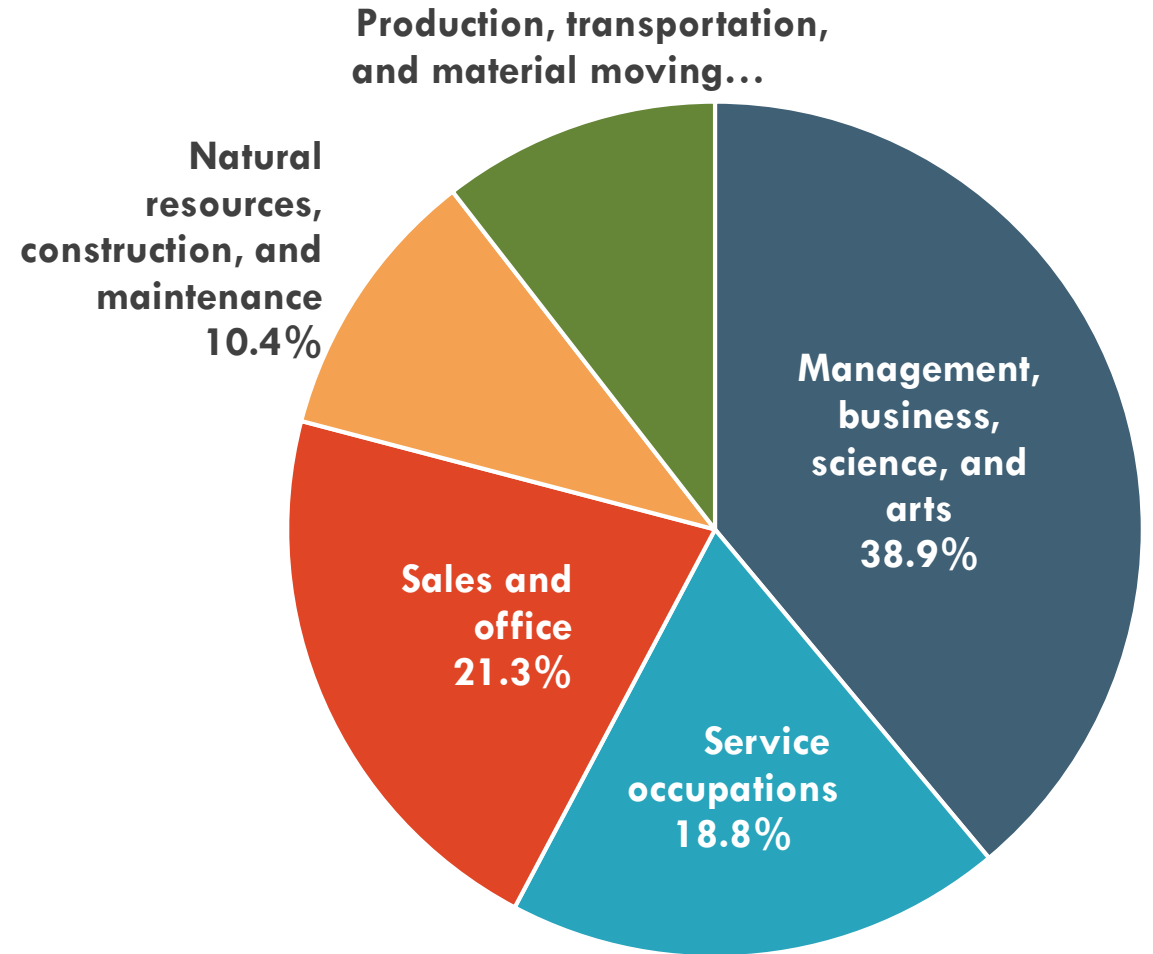
### Cost-Burdened

- Earning less than 80% of area median income
- Spending more than 30% on housing costs

Greater share of renter households that are cost-burdened in Kitsap County

# Kitsap County Income and Labor Force, 2017

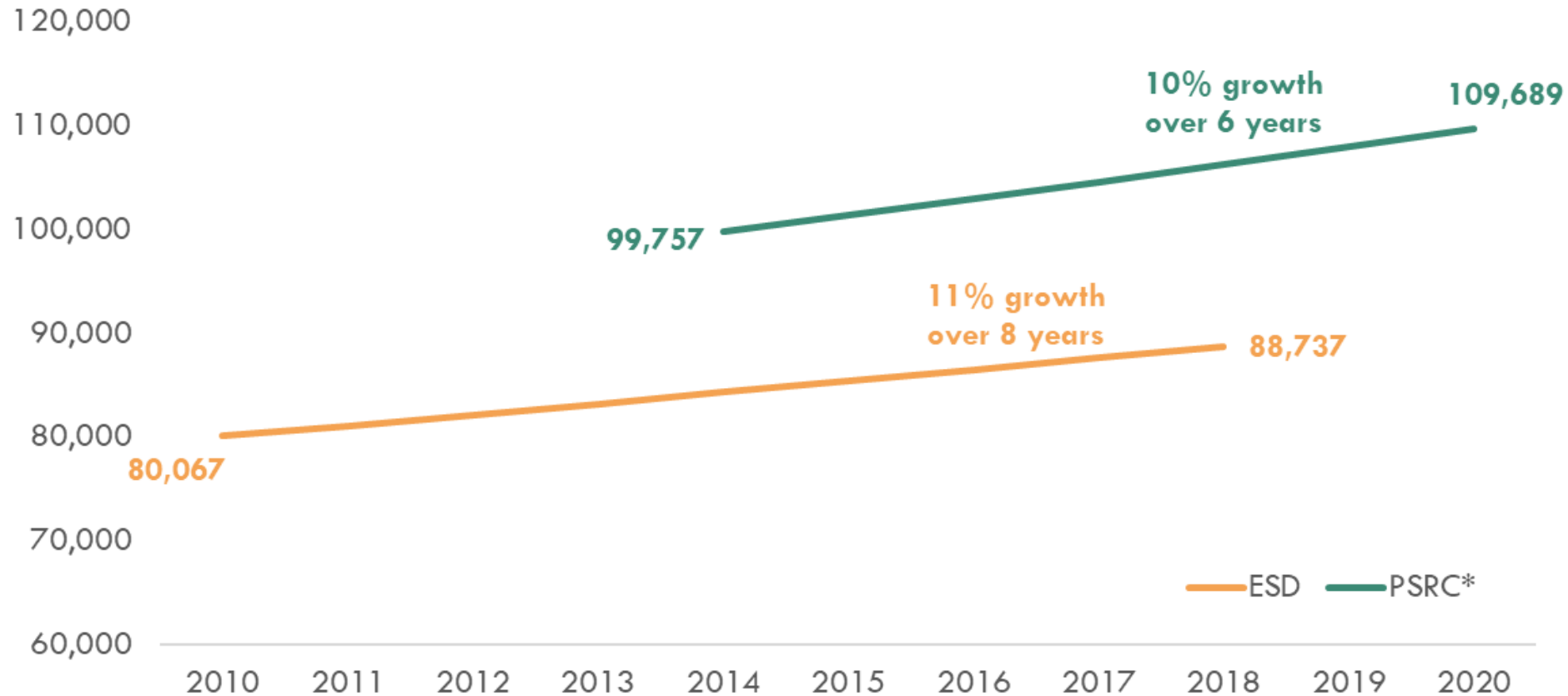
■ Civilian labor force	118,742
■ Armed forces	12,211
■ Unemployment rate	3.2%
■ Median Household Income	\$68,335



Source: US Census. American Community Survey

# Kitsap County jobs

## Kitsap County Covered Employment

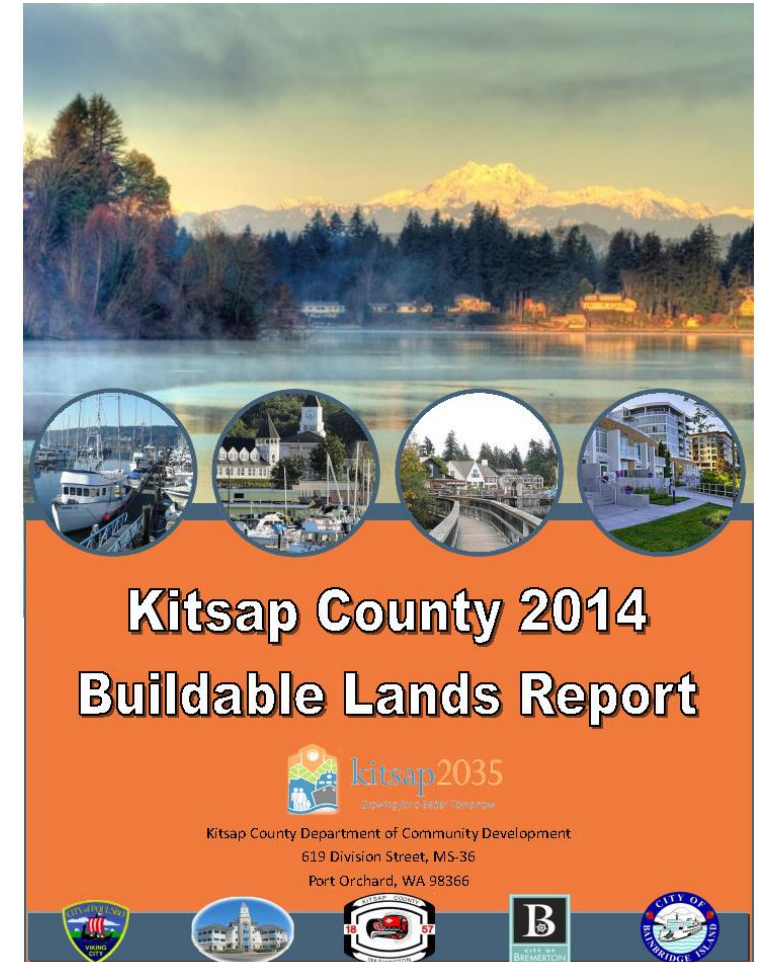


\*PSRC numbers include Military employment



# Development Trends 2006 - 2012

- Slower growth rate than anticipated
  - 10,451 population growth, mostly in cities
- Shift toward increased growth in UGAs or cities
- Available capacity to accommodate 2036 targets



Source: Kitsap County 2014 Buildable Lands Report

# Population distribution

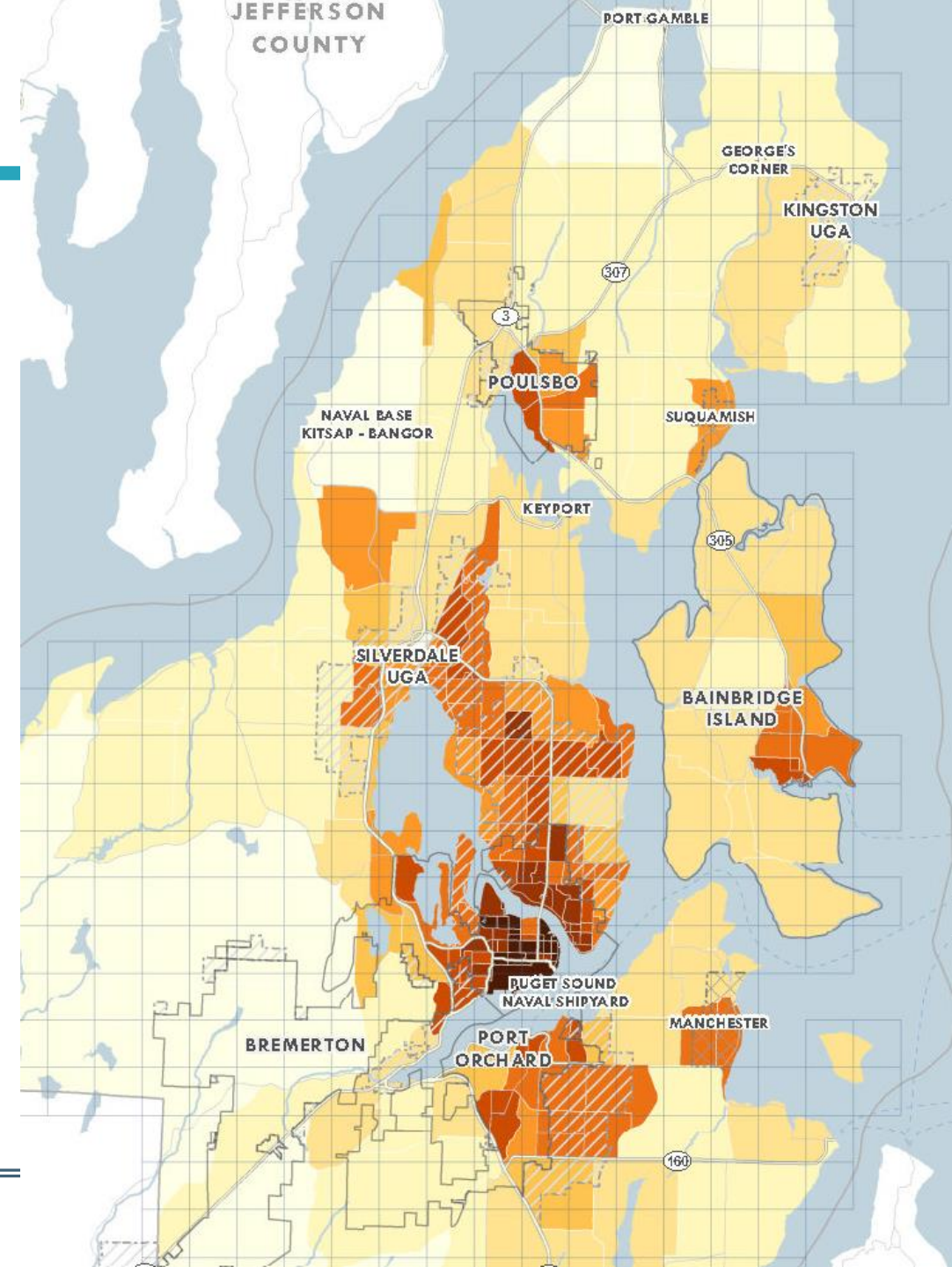
## Population Density per Square Mile



City

UGA

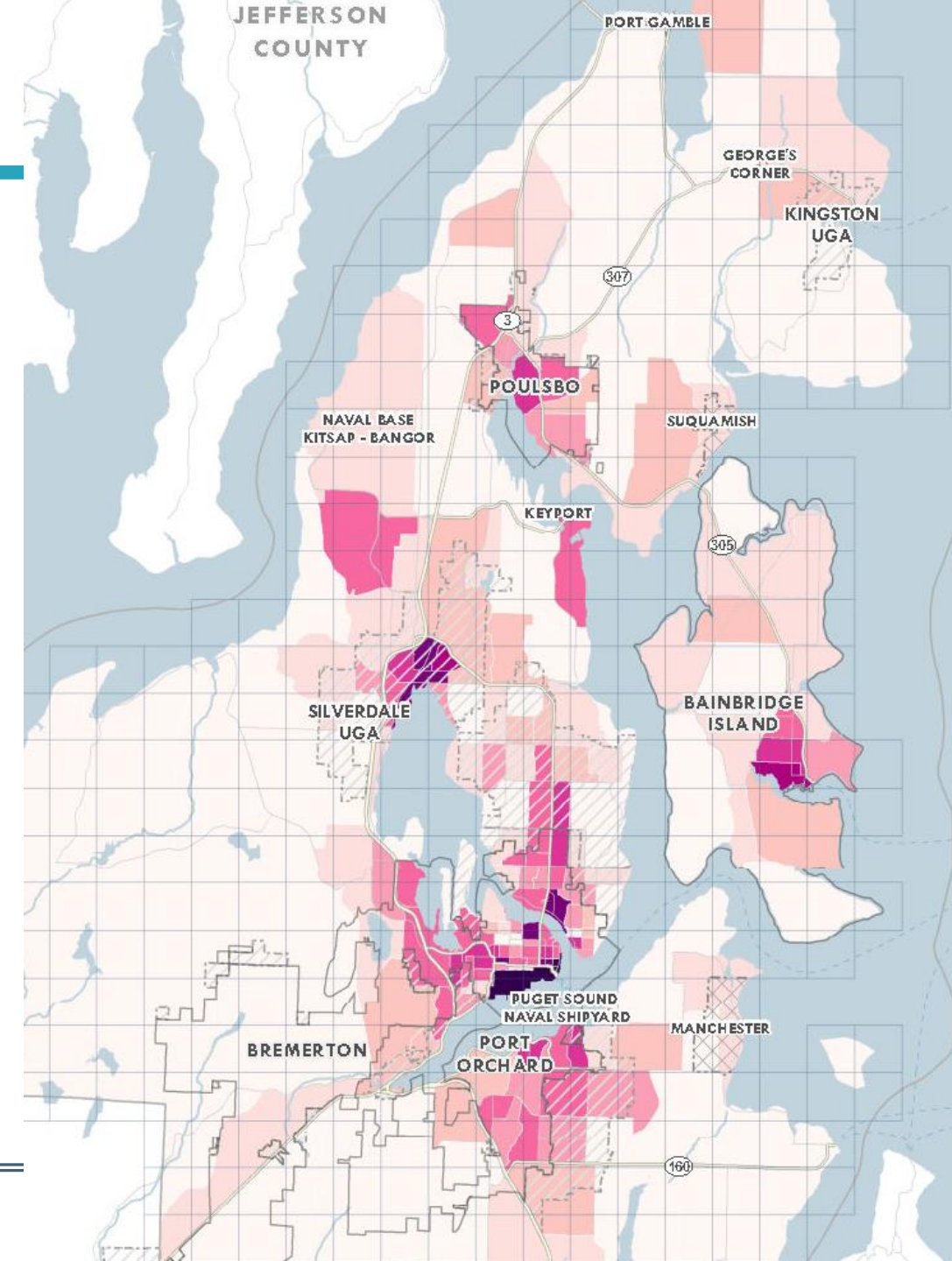
LAMIRD





# Employment distribution

## Employment Density Jobs per Square Mile



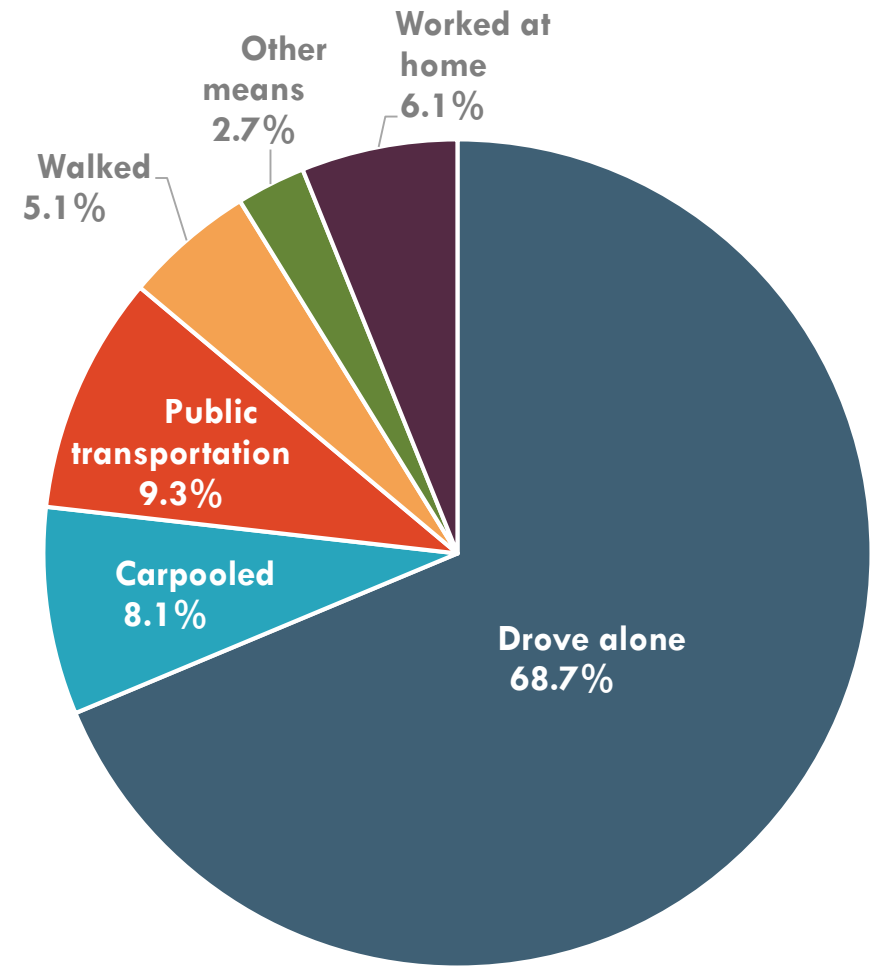


# Kitsap County commute trips 2017

## ■ Primary commute mode

- Drive alone 68.7%
- Public transportation 9.3%
- Carpool 8.1%

## ■ Mean travel time 30.3 minutes



Source: US Census. American Community Survey

# Kitsap Transit Service

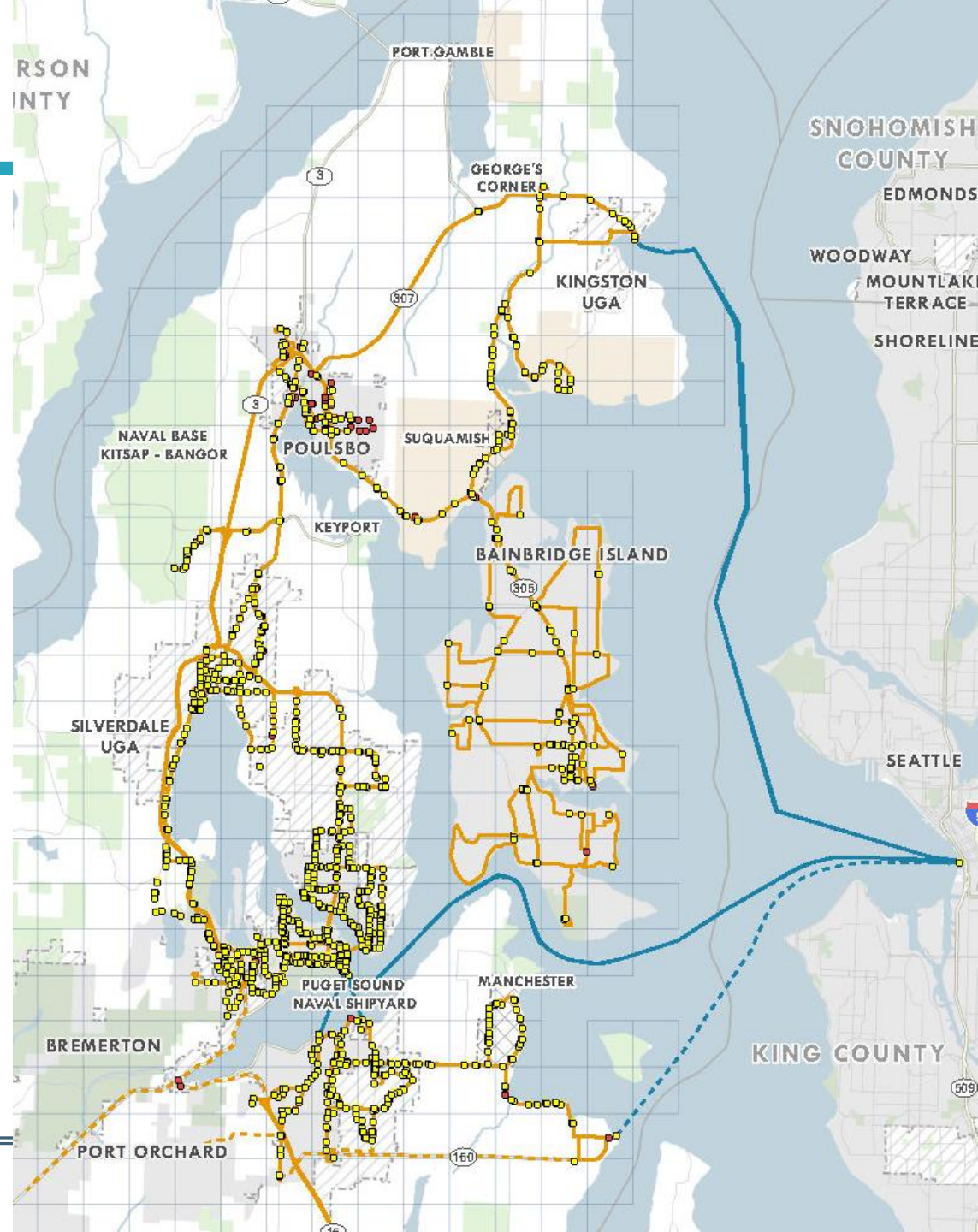
- City
- UGA
- LAMIRD
- Tribal Land
- Public Land
- Existing Transit Stops
- Planned Transit Stops

## Existing Transit Routes

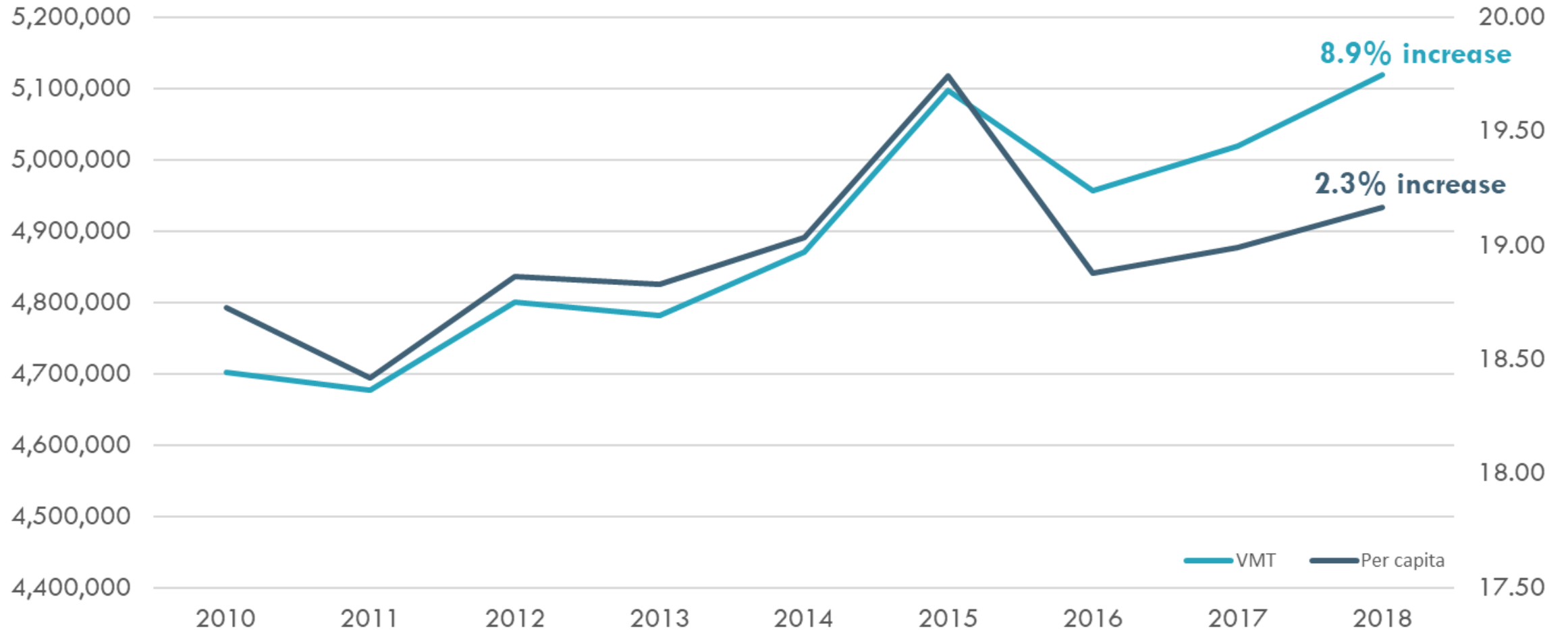
- Bus
- Ferry

## Planned Transit Routes

- Bus
- Ferry



# Average Daily Vehicle Miles Traveled



Source: Puget Sound Regional Council, WA Office of Financial Management

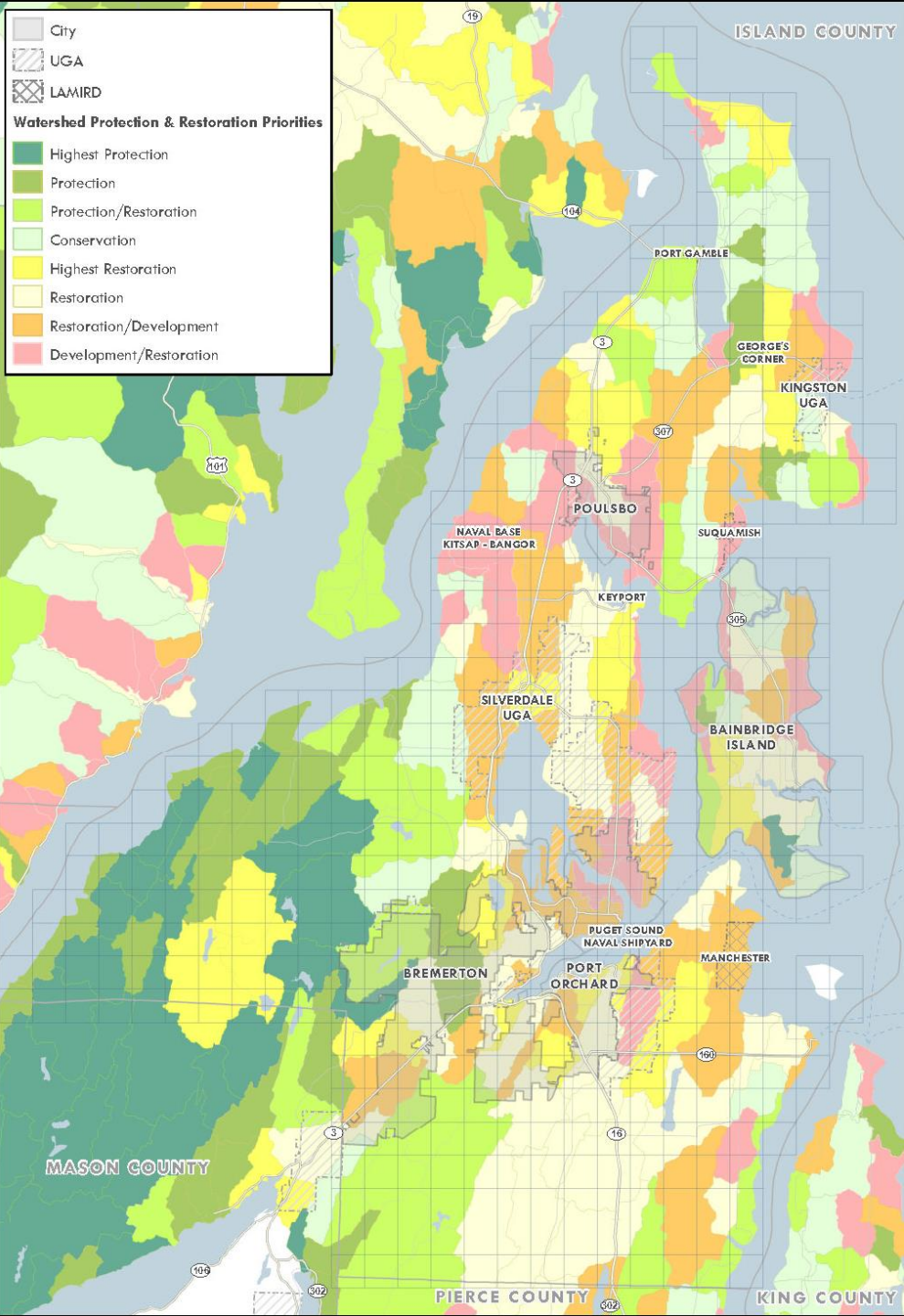


# Water processes

IMPORTANCE

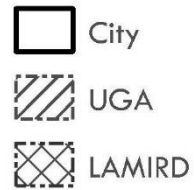
HIGH	Protection 1		Restoration 1	
MED-HIGH	Protection 2		Restoration 2	
MEDIUM	Conservation 1		Restoration with Development	
LOW	Conservation 2		Development	
	LOW	MEDIUM	MED-HIGH	HIGH

DEGRADATION

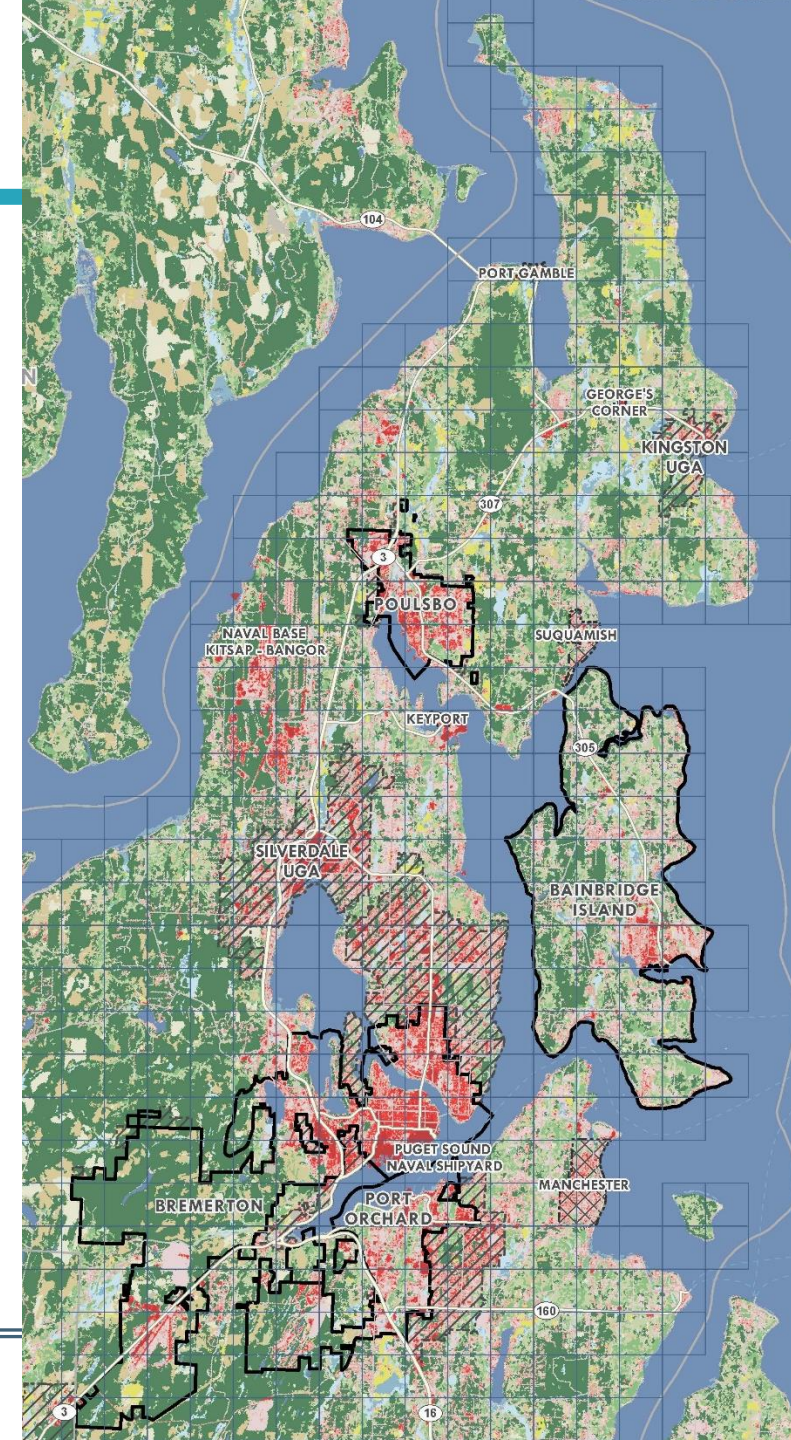


Source: WA Department of Ecology

# Land Cover



## NLCD Land Cover Classification (2016)



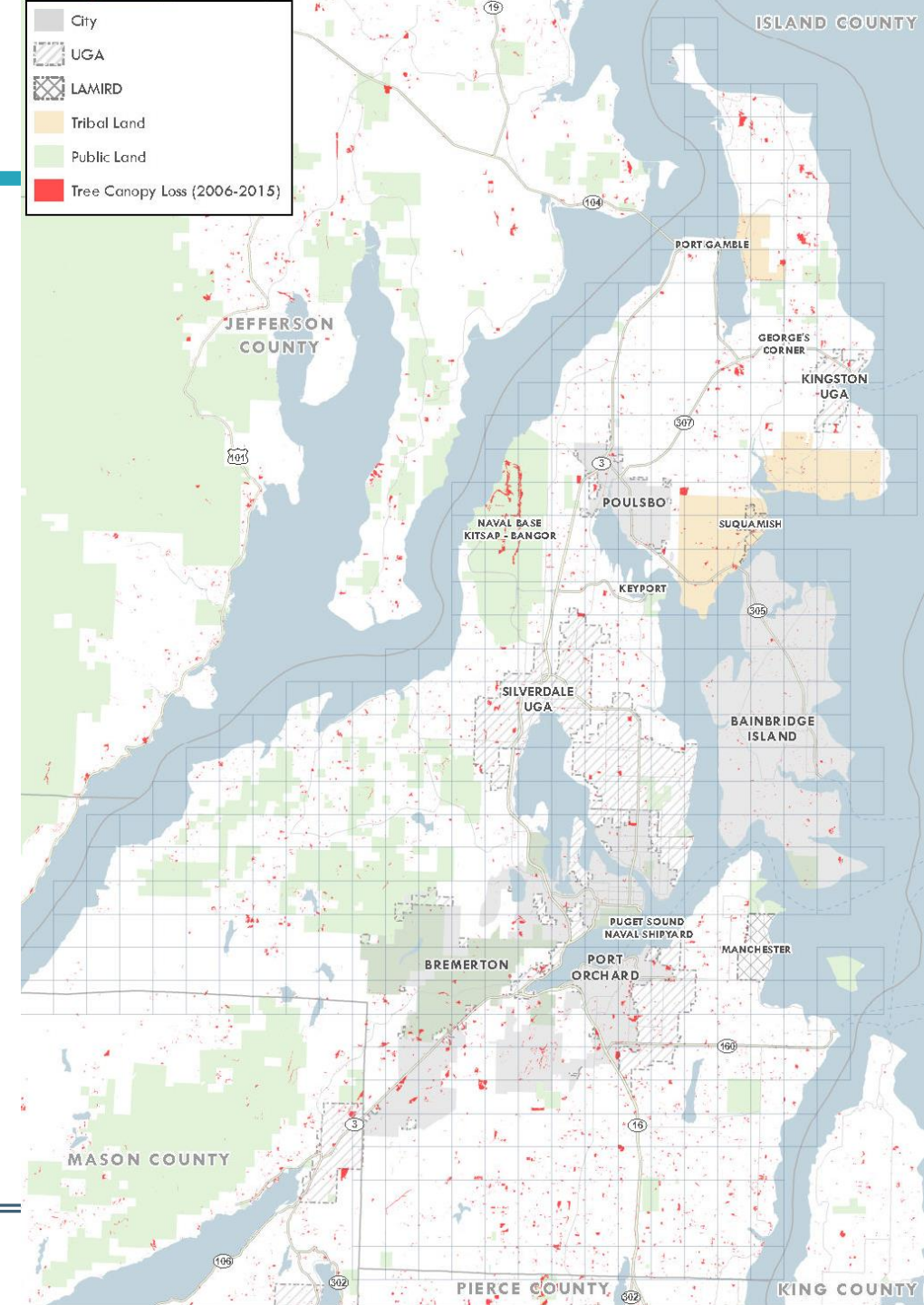


# Tree canopy loss 2006 – 2015

Jurisdiction	Tree Cover Loss (Acres)	Percent of Jurisdictional Area
<b>TOTAL</b>	<b>2,111.16</b>	
Bainbridge Island - I	60.92	0.33%
Bremerton - I	125.26	0.61%
Bremerton - U	10.75	0.37%
Central Kitsap - U	38.21	0.68%
Gorst - U	1.22	0.36%
Kingston - U	23.89	1.93%
Port Orchard - I	119.37	1.66%
Port Orchard - U	17.42	0.55%
Poulsbo - I	45.72	1.33%
Poulsbo - U	18.2	4.23%
Silverdale - U	47.83	0.83%
South Kitsap - U	5.69	2.24%
Rural Kitsap County	1,596.68	0.55%

Source: WA Geospatial Open Data Portal

I = Incorporated UGA  
U= Unincorporated UGA

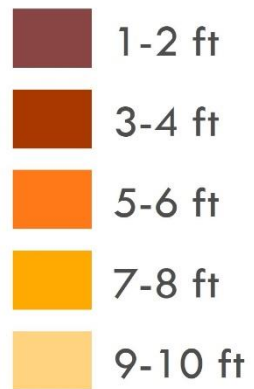




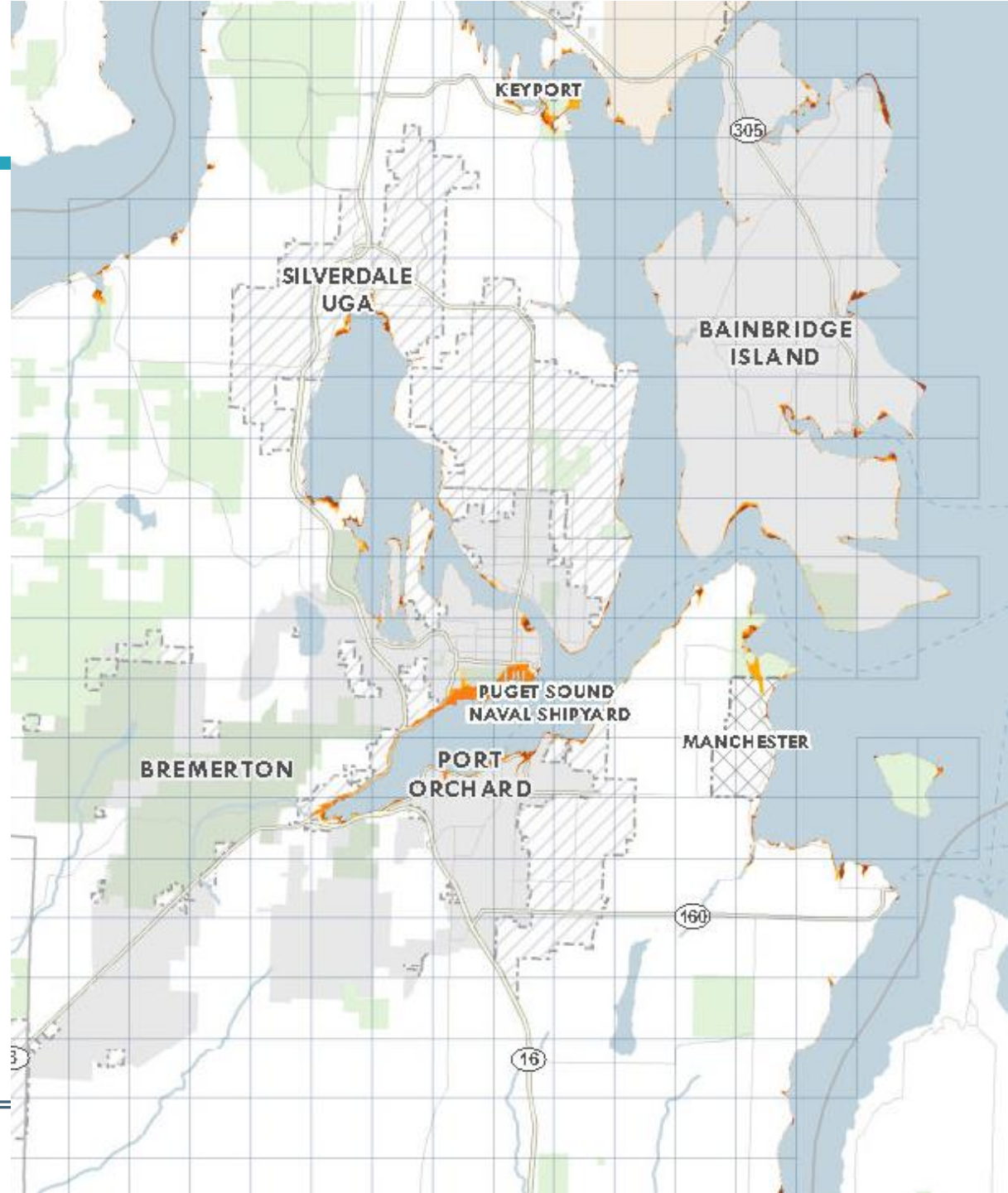
# Sea Level Rise



## Sea Level Rise Needed for Inundation



Source: NOAA Office for Coastal Management



# Conclusions

---

- Continued population and employment growth
- Urban and rural growth patterns more focused
- Known unknowns
  - Technological changes - transportation
  - Economic changes – online retailing, fuel prices, overall economy
  - Environmentally driven changes – impacts related to climate change
  - Larger demographic changes
    - aging work force, increasing diversity, smaller households, later marriages

# Discussion

---

- Does this line up with your experience of growth in the County? What other observations do you have?
- What have been the benefits and challenges of changes over the past several years?
- What lessons learned do you want to carry forward to the future?