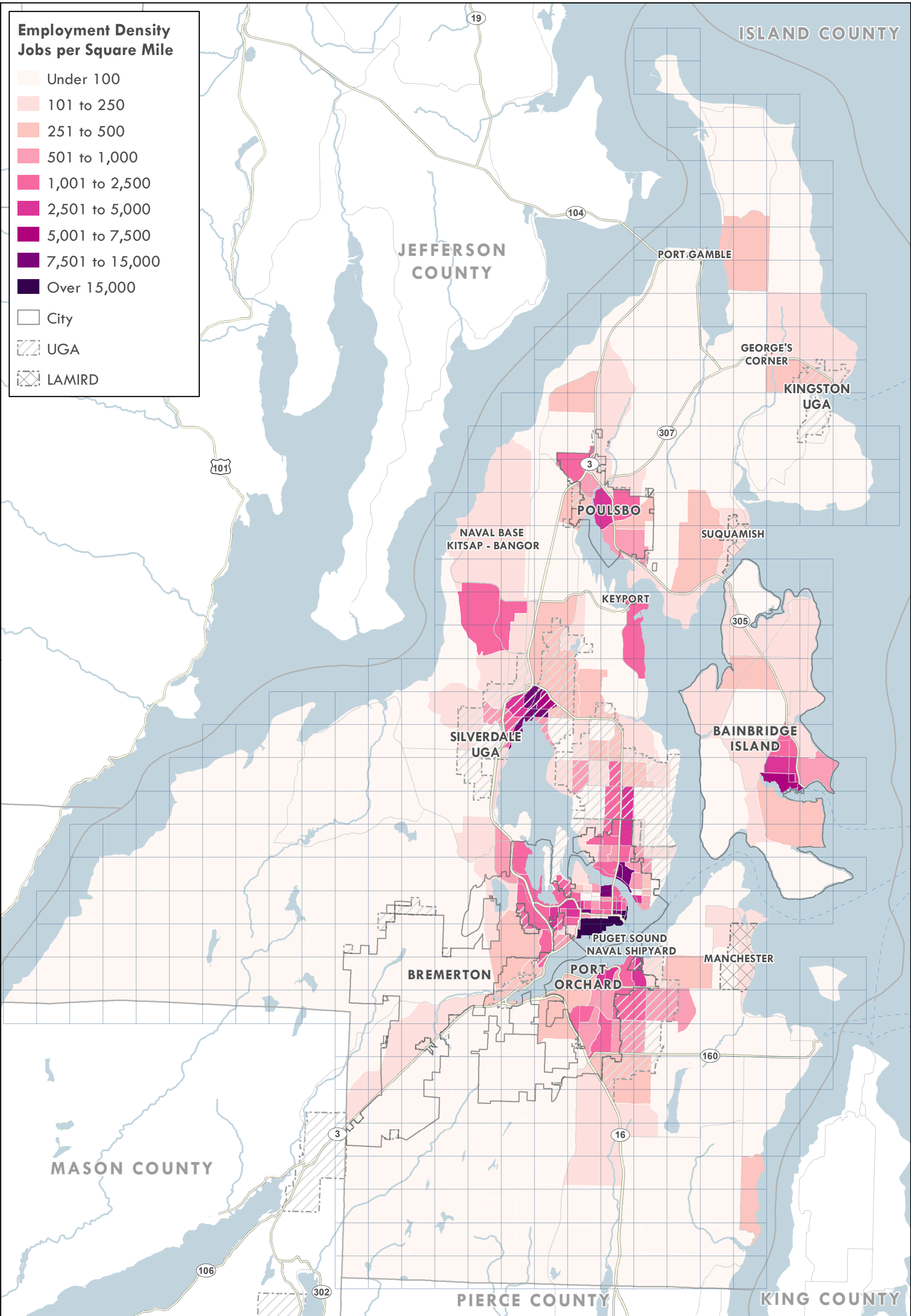


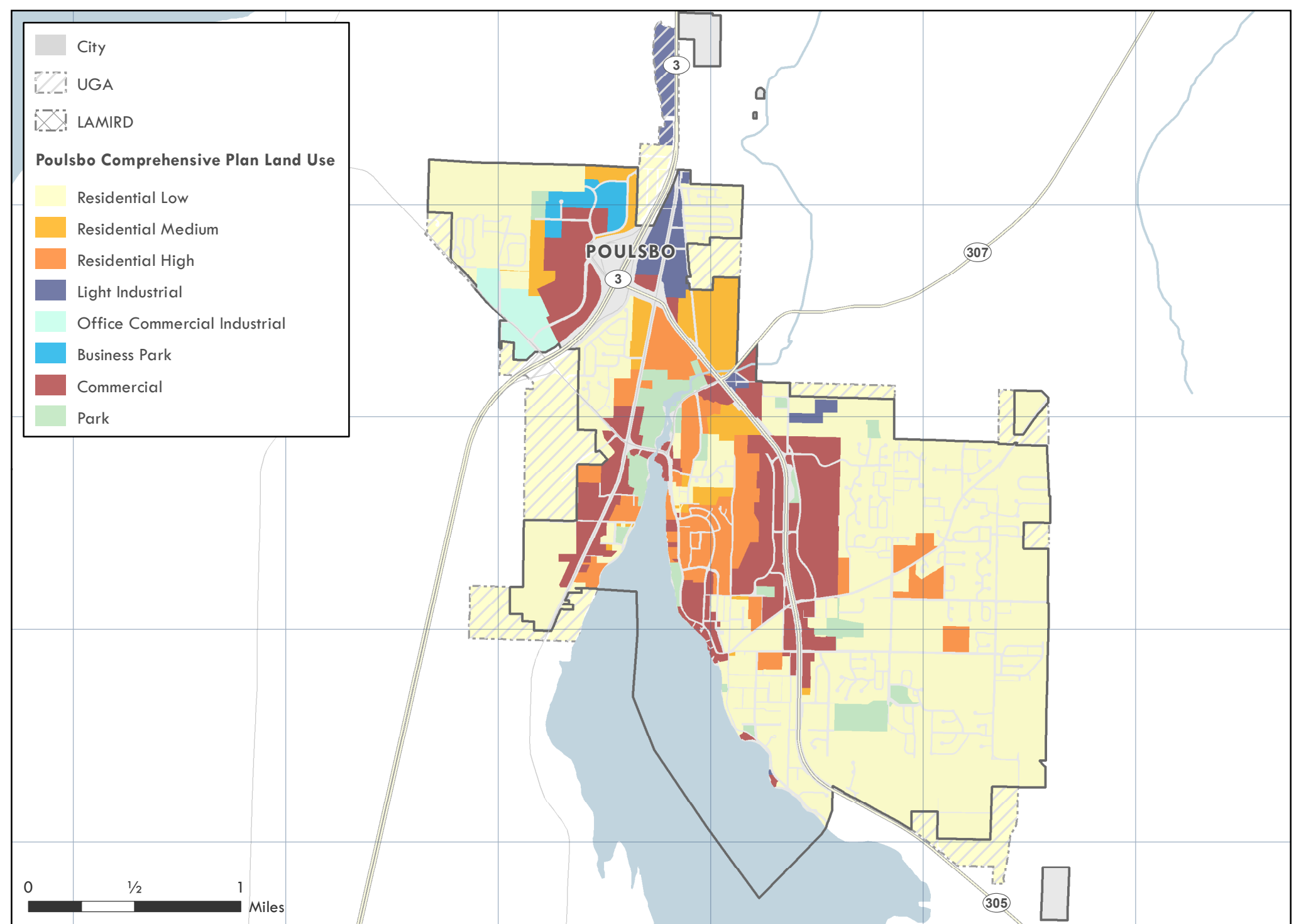
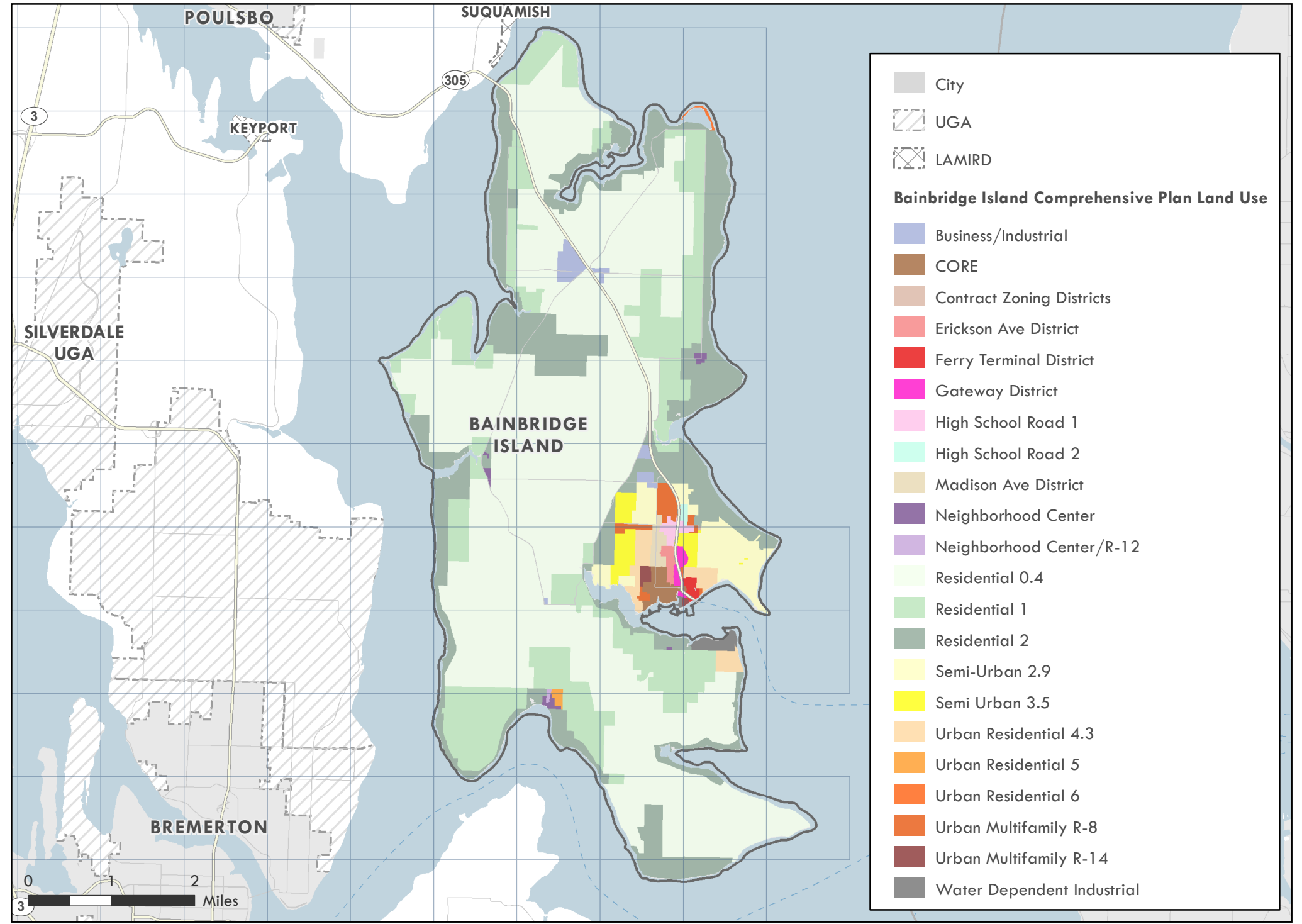
Environmentally Critical Areas - Hydrology



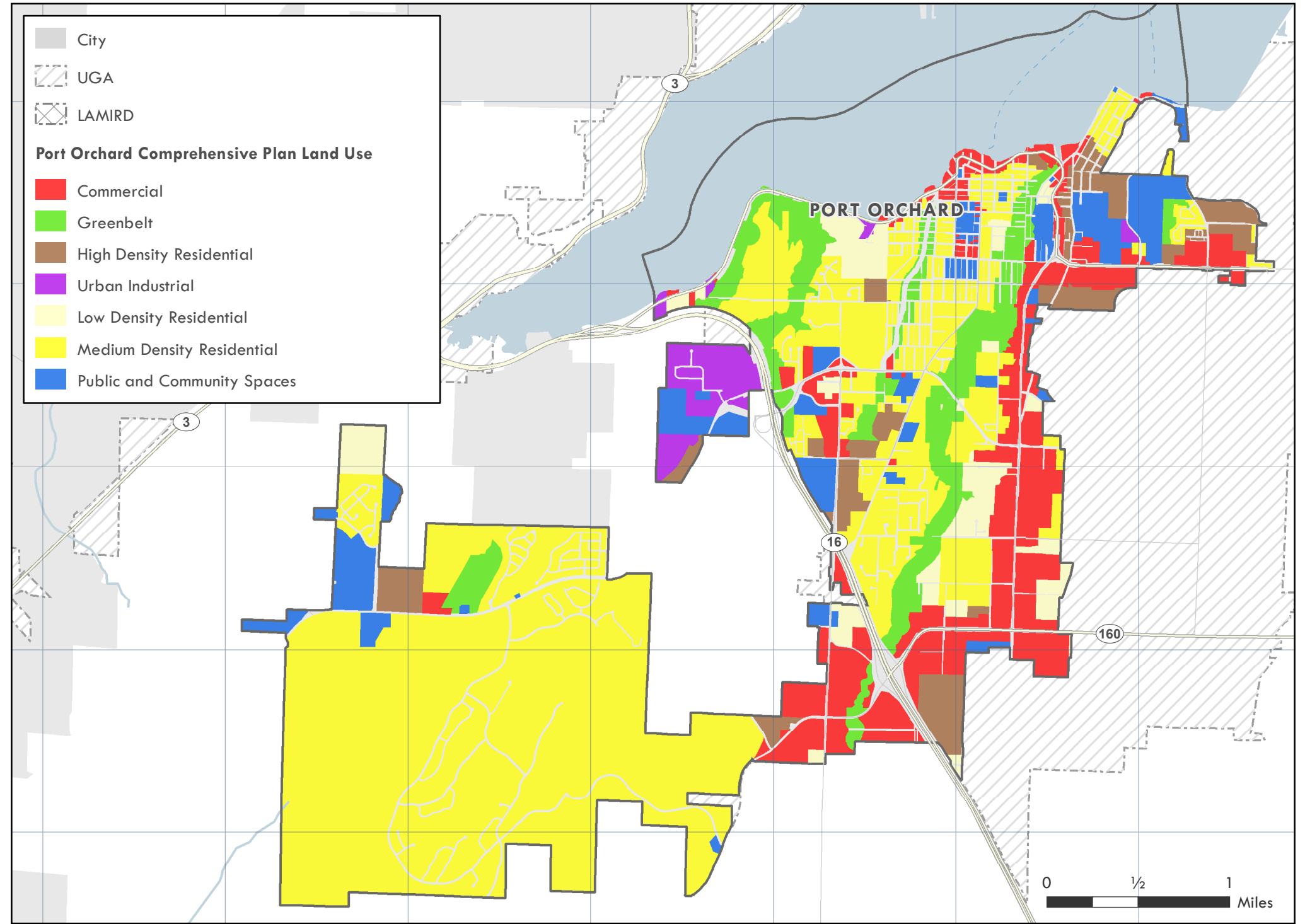
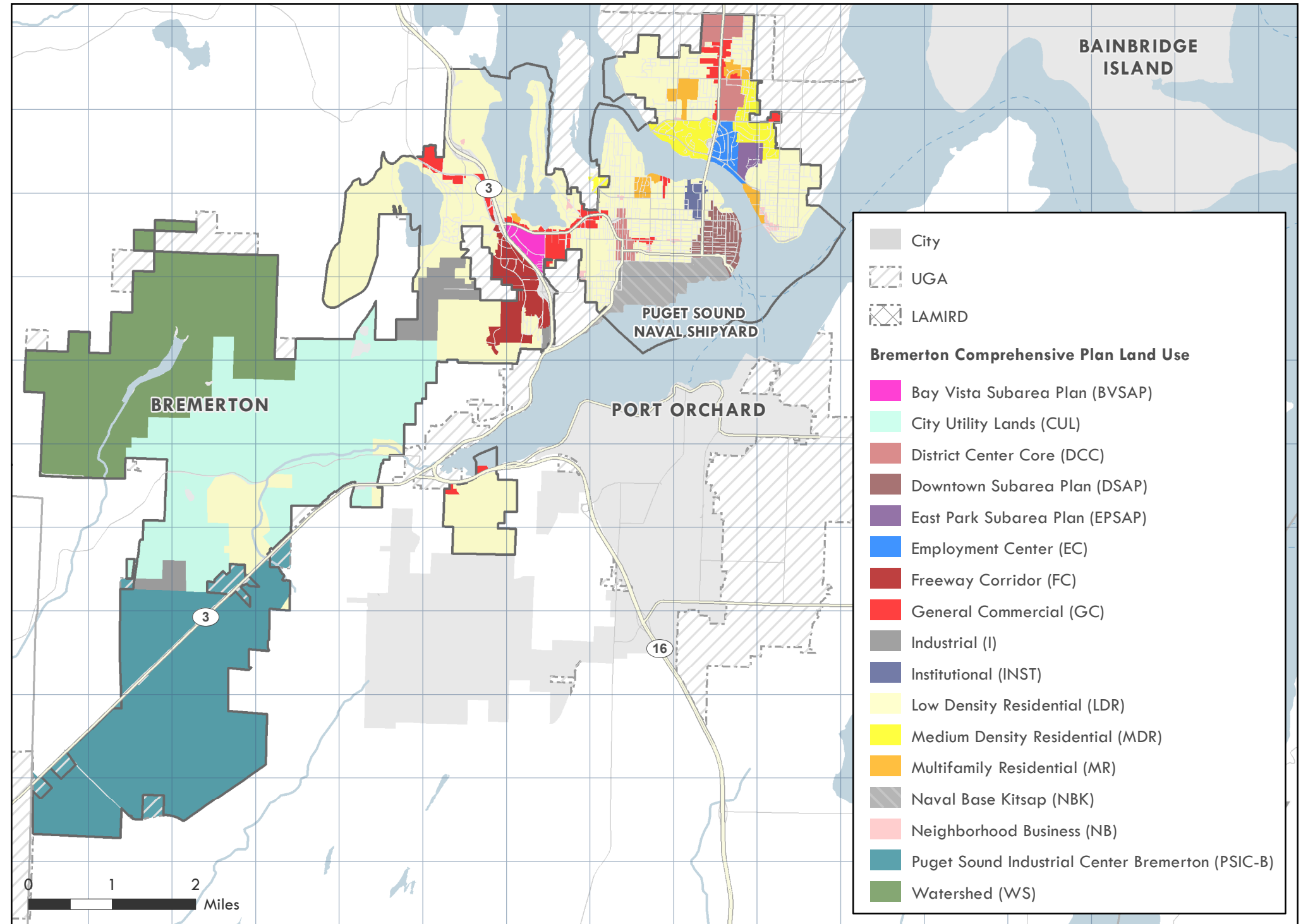


Employment Density - 4k TAZ - 2018 BERK Baseline





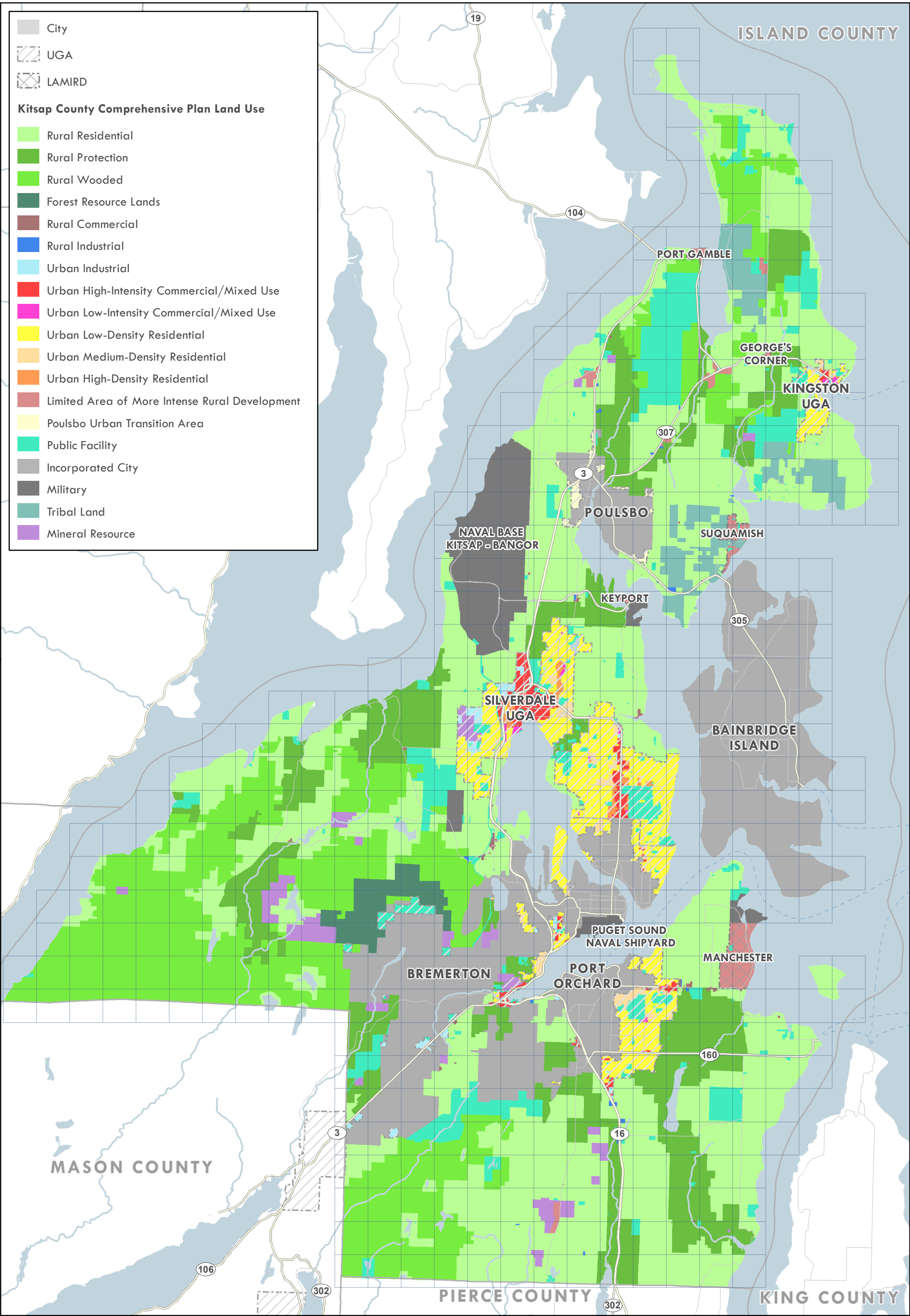




Comprehensive Plan Future Land Use

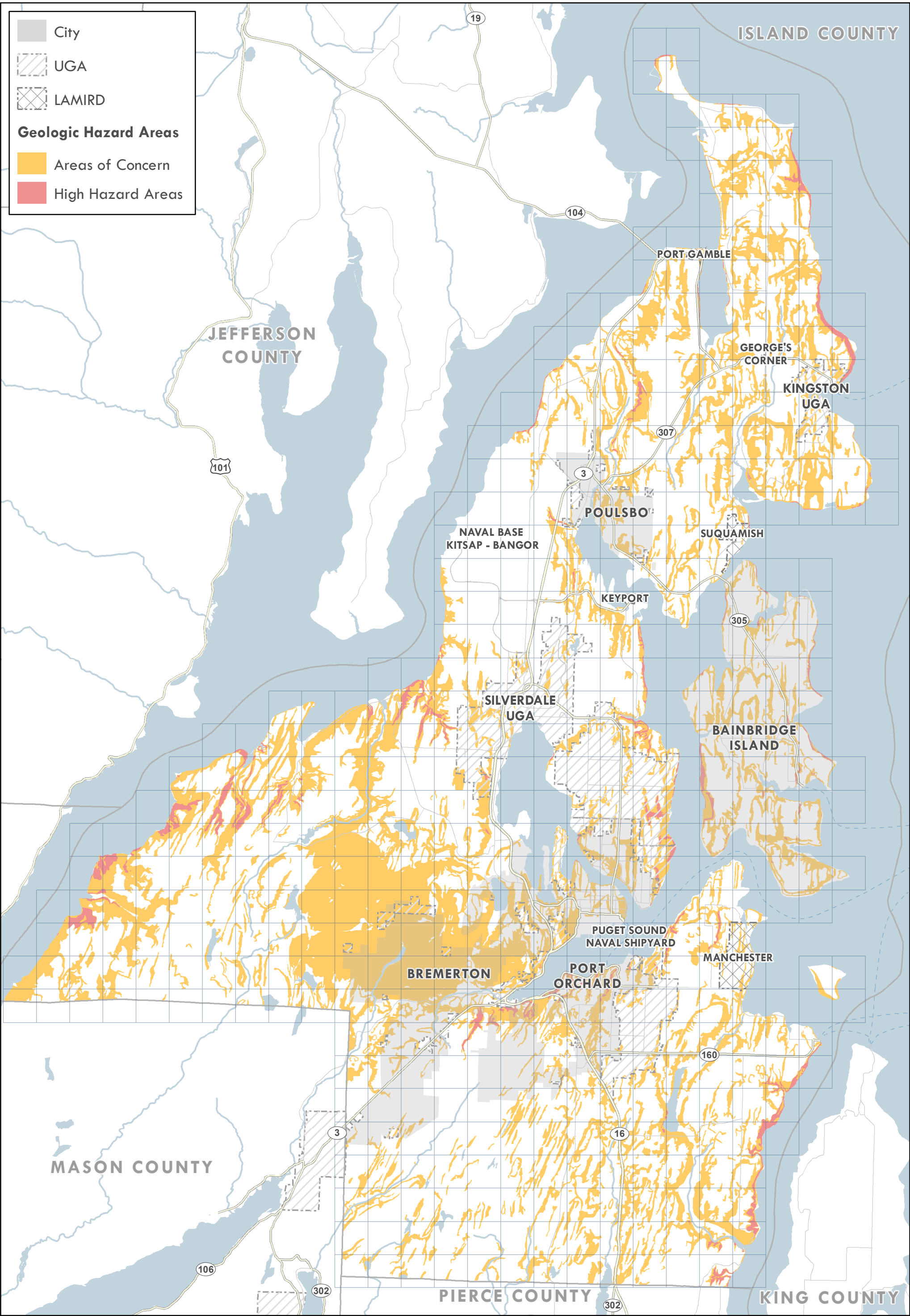






Comprehensive Plan Future Land Use

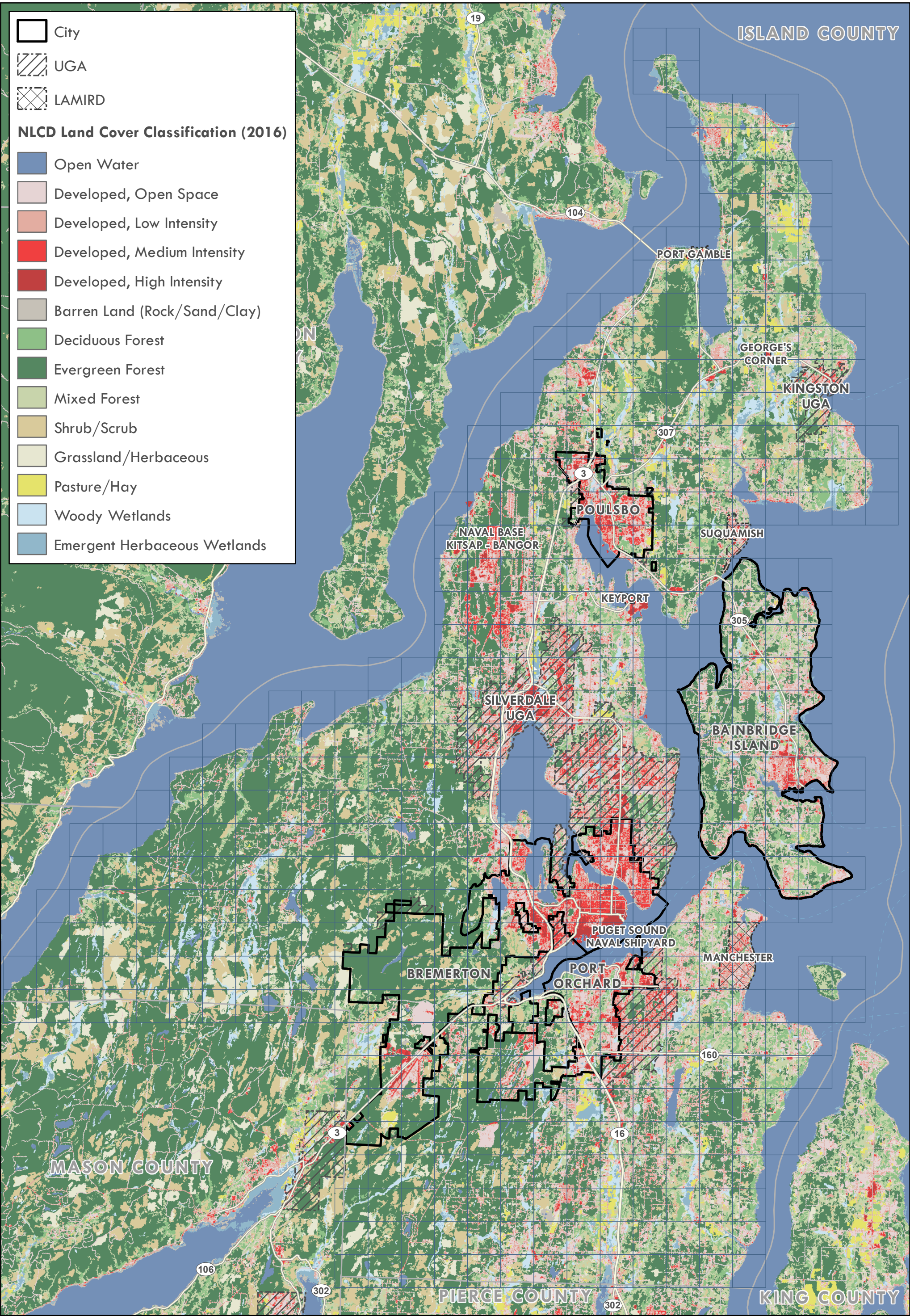




Environmentally Critical Areas - Geologic Hazards



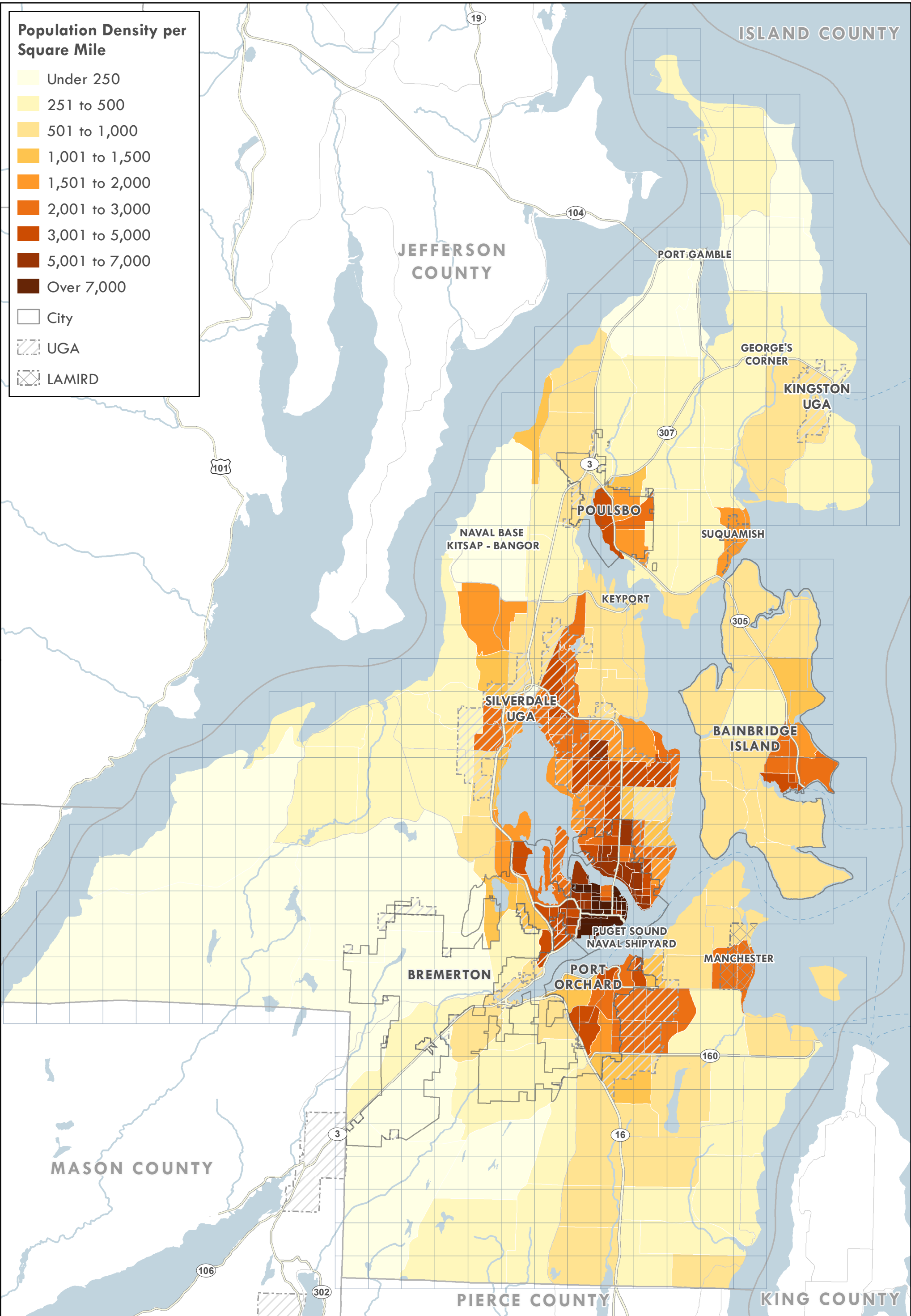




Land Cover Classification (2016)

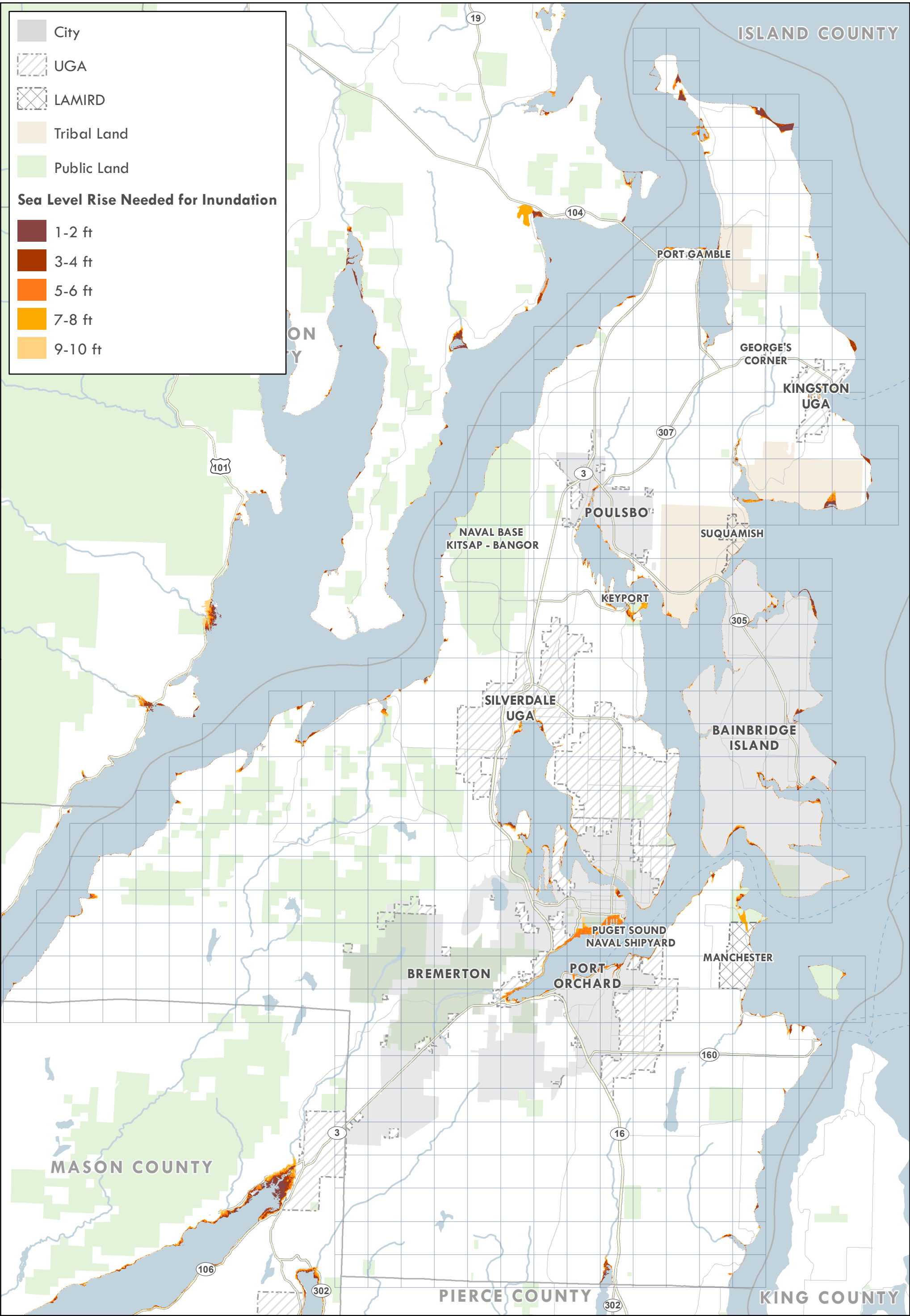






Population Density - 4k TAZ - 2018 BERK Baseline



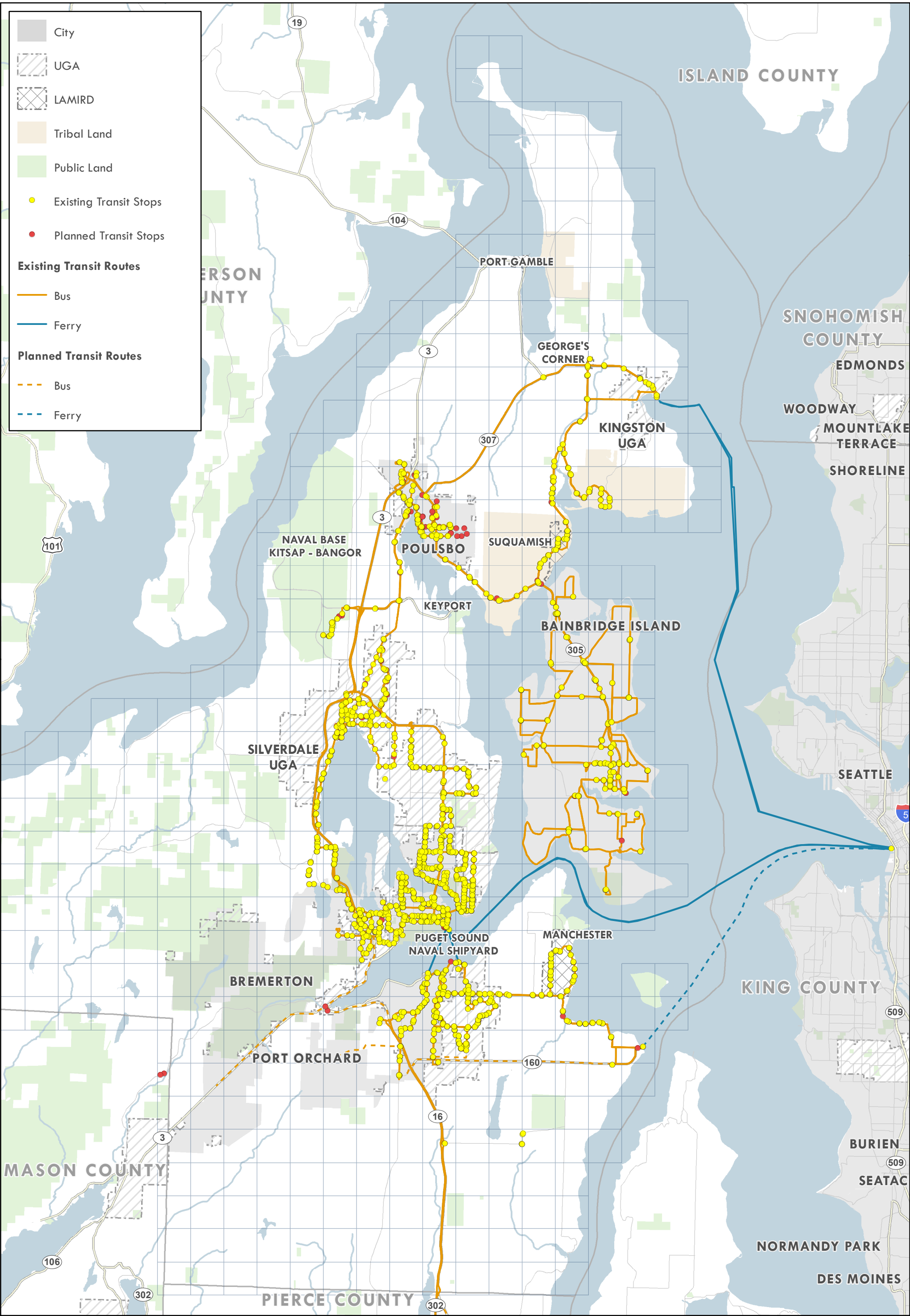


Sea Level Rise Susceptibility



0 1 2 Miles

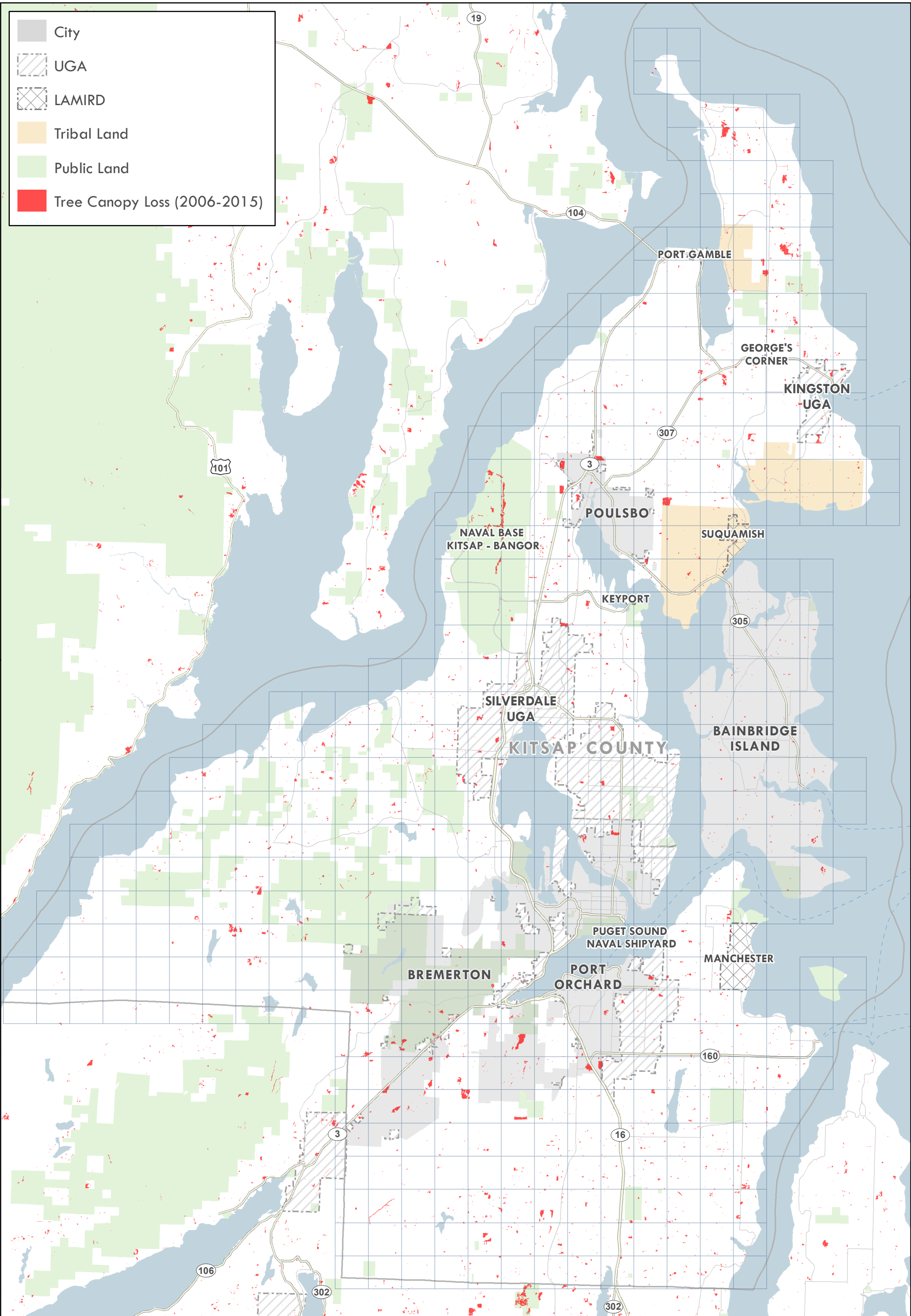
Map Date: October 2019



Existing and Planned Transit Network

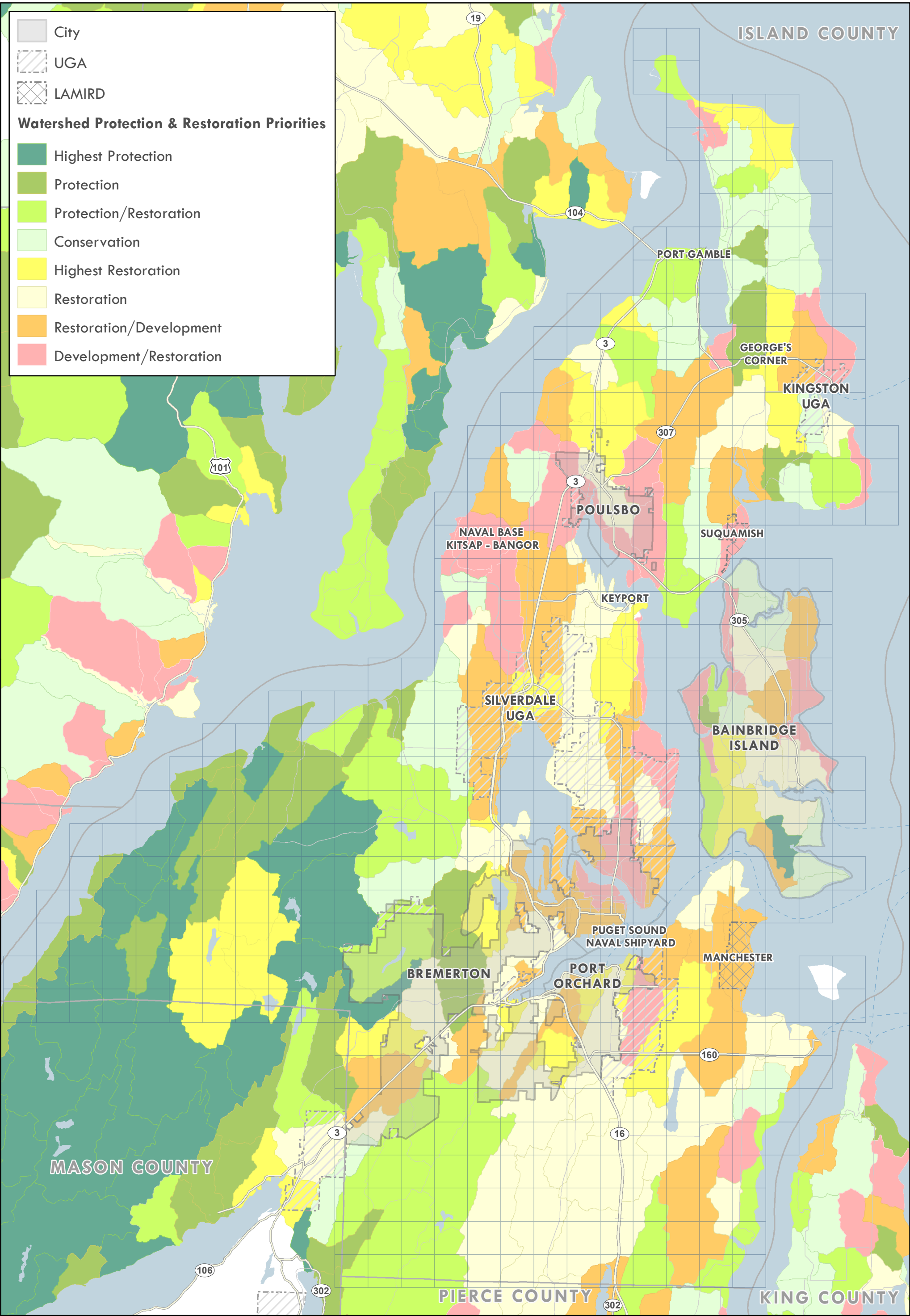






Areas of Tree Canopy Loss (2006-2015)





Watershed Characterization

