

# VISION 2050

Kitsap Regional Coordinating Council

March 5, 2019



Puget Sound Regional Council



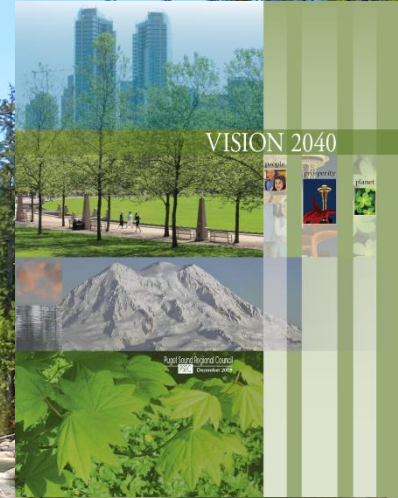
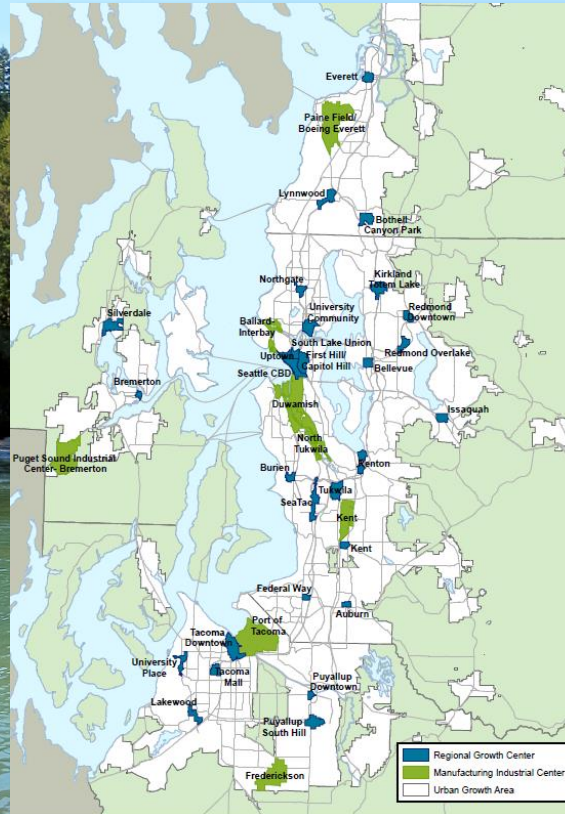
# VISION 2040

- A strong economy and a healthy environment
- Preserve waters, farms, recreation and resource lands
- Urban Growth Area and centers strategy
- Local actions to achieve regional VISION



# VISION 2050

VISION 2040





# VISION 2050 Work Program



## VISION 2050 Work Program



● Early work

● Scoping, research,  
planning

● SEPA review,  
draft plan

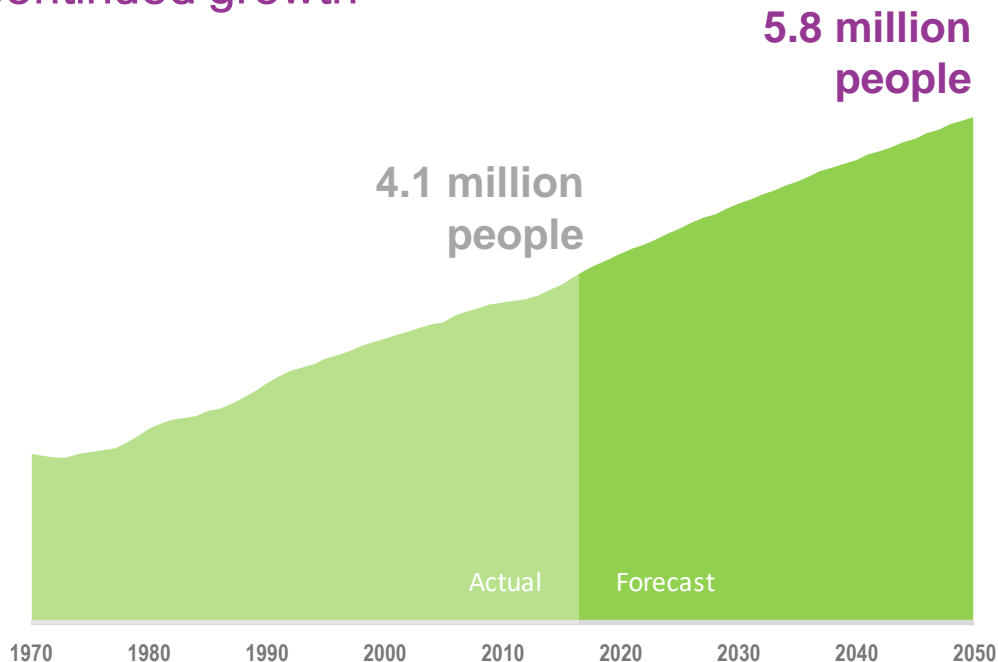
● Adoption

# 2050 Population Forecast



## The long range forecast is for continued growth

- The region is projected to grow by about **1.8 million people** between 2017 and 2050
- Continued job growth combined with dynamics of an aging population are key drivers of the population forecast

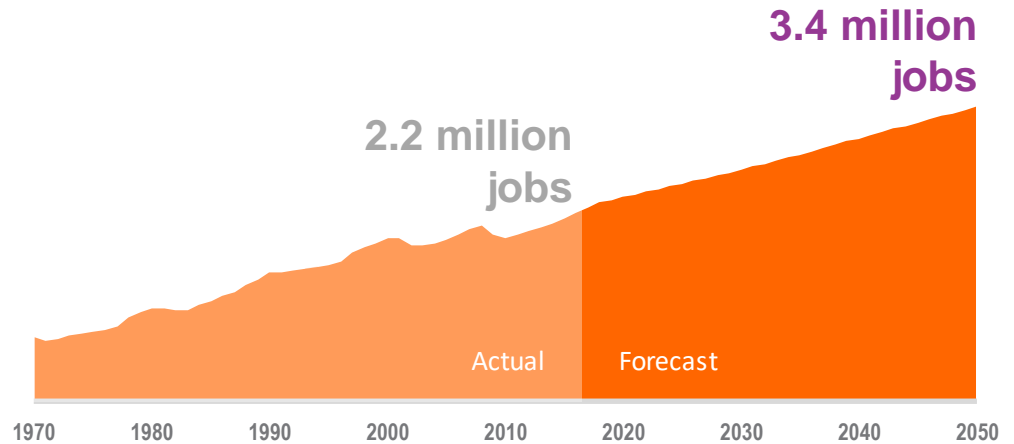


# 2050 Employment Forecast



## The long range forecast is for continued growth

- The region is projected to add about **1.2 million jobs** between 2017 and 2050
- A robust, diversified regional economy that continues to outperform the national economy is the key driver for the jobs forecast



# Who will be living here?



In 2050, the region's residents will be:

## Older



18% of the region's population will be over the age of 65 by 2050, up from 14% today.

## More diverse



Between 2000 and 2016, 81% of the region's population growth was people of color.

## In smaller households



In 2050 there will be 2.36 people per household on average, down from 2.50 today.



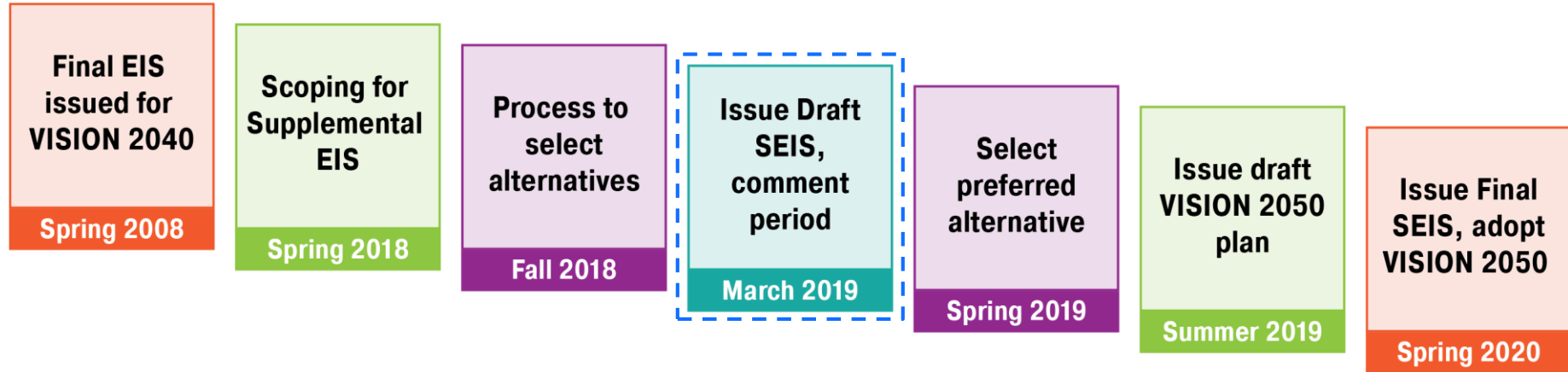


# Environmental Review SEPA





## VISION 2050 SEPA Process





# Scoping: What We Heard



- Housing supply and **affordability** top concerns
- Growth strategy should be **achievable** and reflect known trends
- Address **climate**, access to **jobs**, **equity**, and **health**
- Revisit the role of **urban unincorporated areas**
- Perspectives on implementation
  - Need **accountability** and **incentives** to implement
  - Strategy should provide local **flexibility**





# Growth Alternatives





# Growth Alternatives

## Stay the Course

Growth focused in Metropolitan and Core cities

## Transit Focused Growth

More compact growth focused in high capacity transit (HCT) areas

## Reset Urban Growth

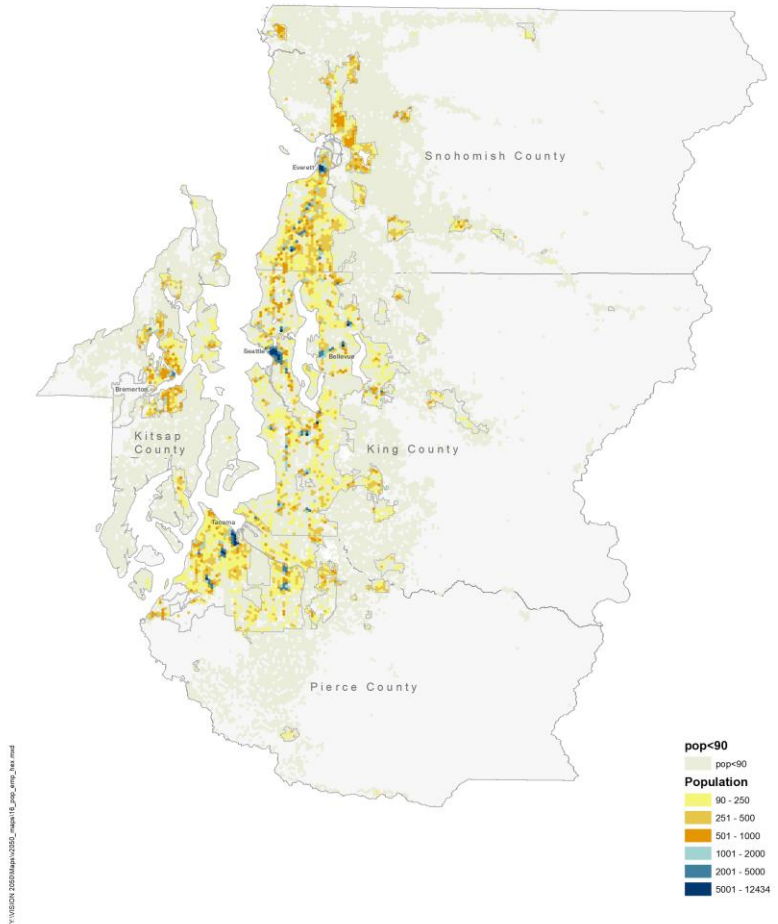
Growth more distributed throughout the urban growth area

# Growth Alternatives

## Stay the Course

Compact growth focused in Metropolitan and Core cities with regional growth centers

- Maintains current adopted strategy
- Largest shares of growth to Metropolitan cities of Seattle, Bellevue, Everett, Bremerton and Tacoma
- Directs more growth to cities and less growth in urban unincorporated and rural areas



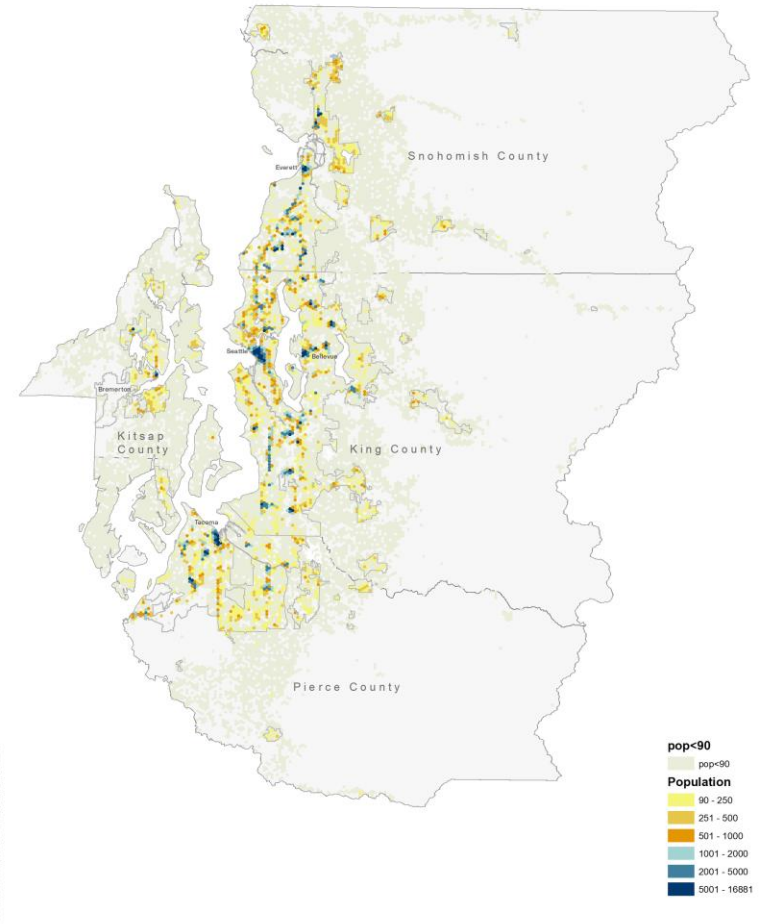


# Growth Alternatives

## Transit Focused Growth

Accelerated growth near existing and planned high capacity transit investments

- Goal for 75% of the region's growth to occur near high capacity transit
- Less growth in rural and unincorporated areas without high capacity transit
- Uses 2017 OFM county distribution, +5% shift of employment to Pierce, Snohomish and Kitsap counties

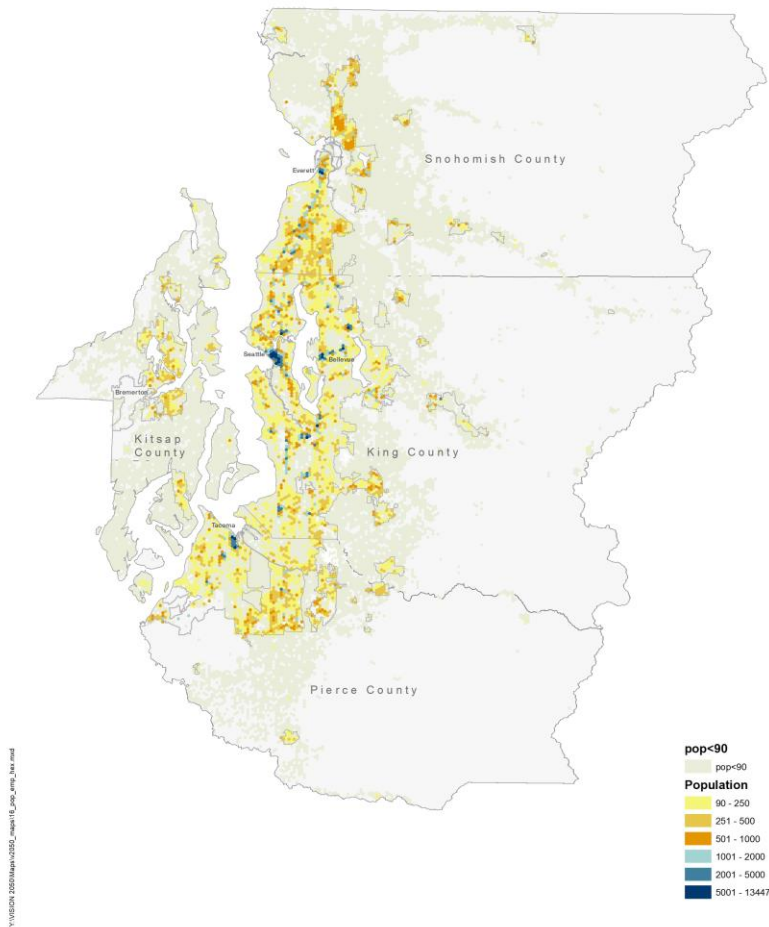


# Growth Alternatives

## Reset Urban Growth

More dispersed growth throughout the urban growth area

- Assumes a large share of growth to Metropolitan and Core cities
- Growth for other urban areas based on current land use capacity
- More growth in rural and urban unincorporated areas
- Uses 2017 OFM county distribution, +5% shift of employment to Pierce, Snohomish and Kitsap counties

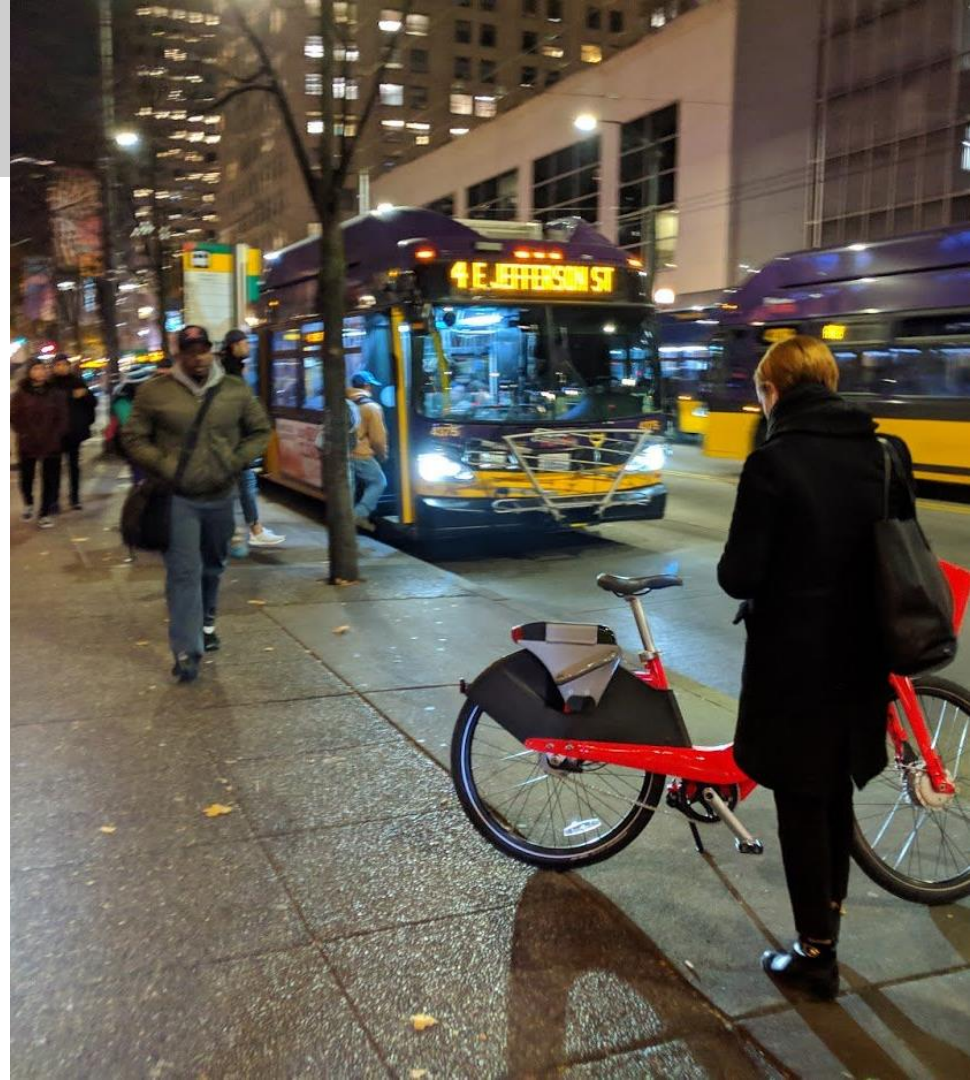




# Growth Alternatives









## Common to all alternatives

- Average drive times and distances will be less, but time spent stuck in traffic will increase
- Transit ridership more than doubles
- Air quality will improve and greenhouse gas emissions will be reduced
- All require about 830,000 new housing units
- Redevelopment will increase the threat of displacement, which will require mitigation to be avoided



# Environmental Impacts



	Stay the Course (plan extended)	Transit Focused Growth	Reset Urban Growth
 <b>Vehicle delay</b>	31 hours	 29 hours	 32 hours
<b>Job access by biking, walking, or transit</b>	Substantial increase		
 <b>Greenhouse gas emissions</b>	41,000 tons per day CO <sup>2</sup> equivalent	 39,600 tons per day CO <sup>2</sup> equivalent	 41,400 tons per day CO <sup>2</sup> equivalent

# Environmental Impacts



## Moderate density housing

(moderate=townhome, triplex, low-rise MF)

**Stay the Course**  
(plan extended)

15% moderate-density  
46% high-density  
39% low-density

**Transit Focused Growth**

19% moderate-density

**Reset Urban Growth**

13% moderate-density



## Displacement risk

Elevated risk



## Jobs-housing balance

Improved balance





# VISION 2050 Policies

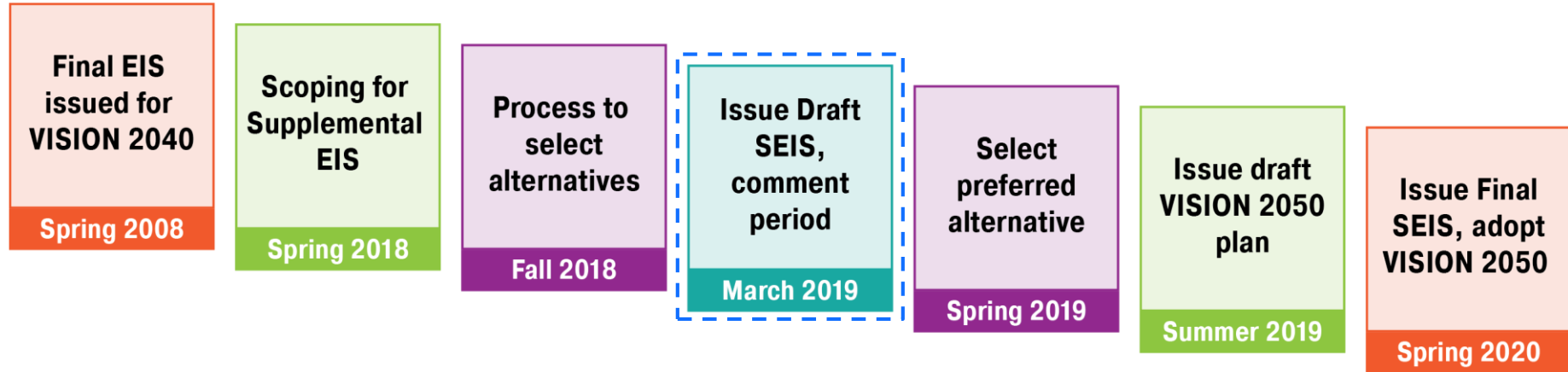
## Key themes:

- Compact, walkable places
- Leverage our transportation investments
- Promote affordable housing in all development
- Preserve open space and farm lands
- Social equity & displacement
- Four-part Strategy to address climate change





## VISION 2050 SEPA Process



# How to Comment

## Draft SEIS Review Feb 28 – April 29

### Open houses:

- March 12 from 4 – 6 p.m. at Edmonds City Hall
- March 13 from 4 – 6 p.m. at South Tacoma Public Library
- March 18 from 4 – 6 p.m. at Bothell Police Community Room
- March 19 from 4 – 6 p.m. at Bremerton City Council Chambers
- March 21 from 12 – 2 p.m. at PSRC

**More info at: [www.psrc.org/vision](http://www.psrc.org/vision)**







# Thank you.

Paul Inghram, AICP  
[pingram@psrc.org](mailto:pingram@psrc.org)

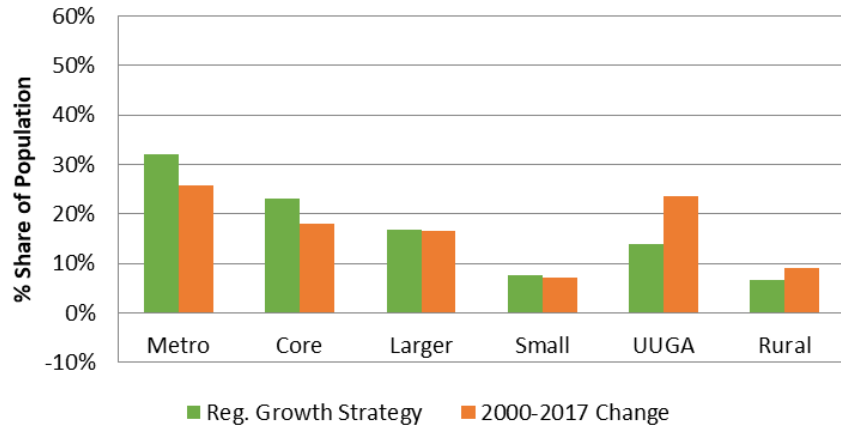


# RGS Performance

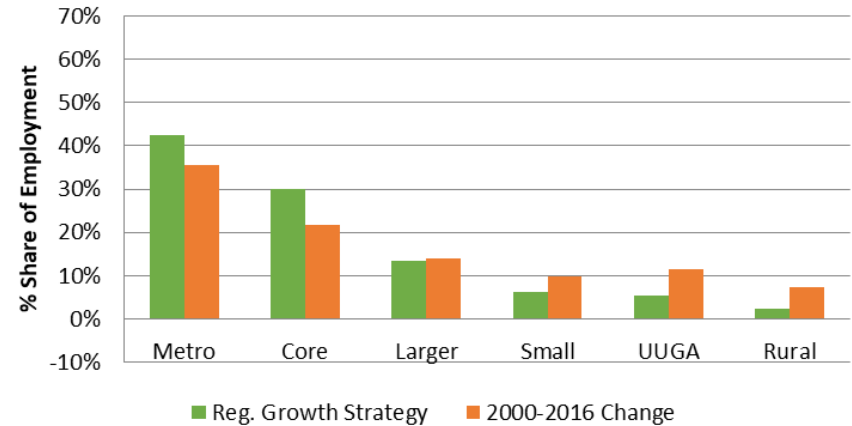


- 2000-2016 growth compared to the Regional Growth Strategy

## Region - Population



## Region - Employment



# Regional Geographies



## Metropolitan Cities



**Largest cities in each county:  
Seattle, Bellevue, Everett,  
Tacoma and Bremerton**

## Core Cities



**All other cities with Regional  
Growth Centers**

## High Capacity Transit Communities



**Cities and urban areas planned for  
annexation with existing/planned  
high capacity transit**



# Regional Geographies



## Cities and Towns



**Cities and towns with local transit service or without fixed-route transit**

## Rural



**Other areas located outside the Urban Growth Area**

## Unincorporated Urban



**Urban unincorporated areas without high capacity transit and/or not planned for annexation or incorporation**

## Resource Lands



**Designated agricultural, forest, & mineral lands**

## Major Military Installations



**Installations with more than 5,000 enlisted personnel**