



Kitsap Regional Coordinating Council

2044 INITIAL GROWTH TARGETS

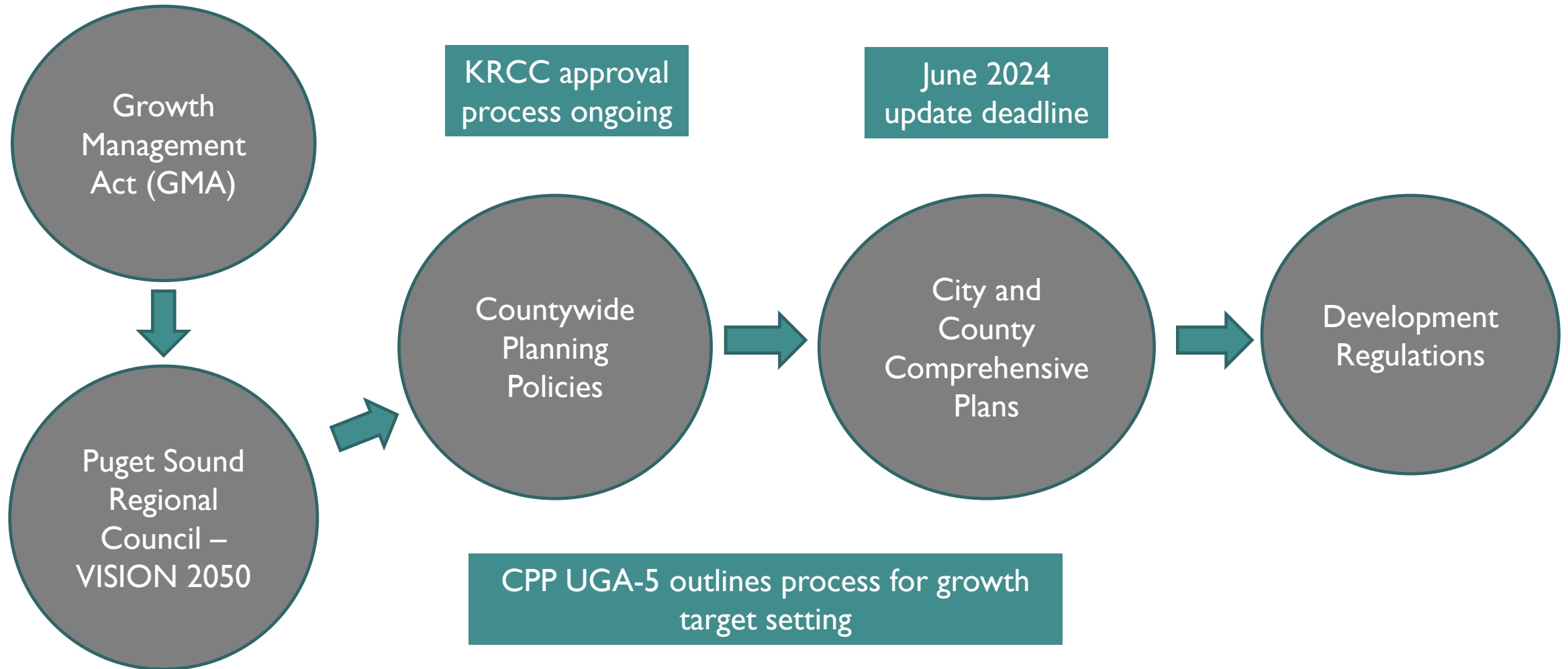
KRCC Board

November 2, 2021

PRESENTATION GOALS

- Provide the KRCC Board an overview of how state, regional, and local planning processes connect on growth target setting (population and employment)
- Provide an overview of the process to adopt new growth targets (population and employment)
- Answer questions from the KRCC Board

BACKGROUND – RELATIONSHIP BETWEEN STATE/REGIONAL/LOCAL PLANS



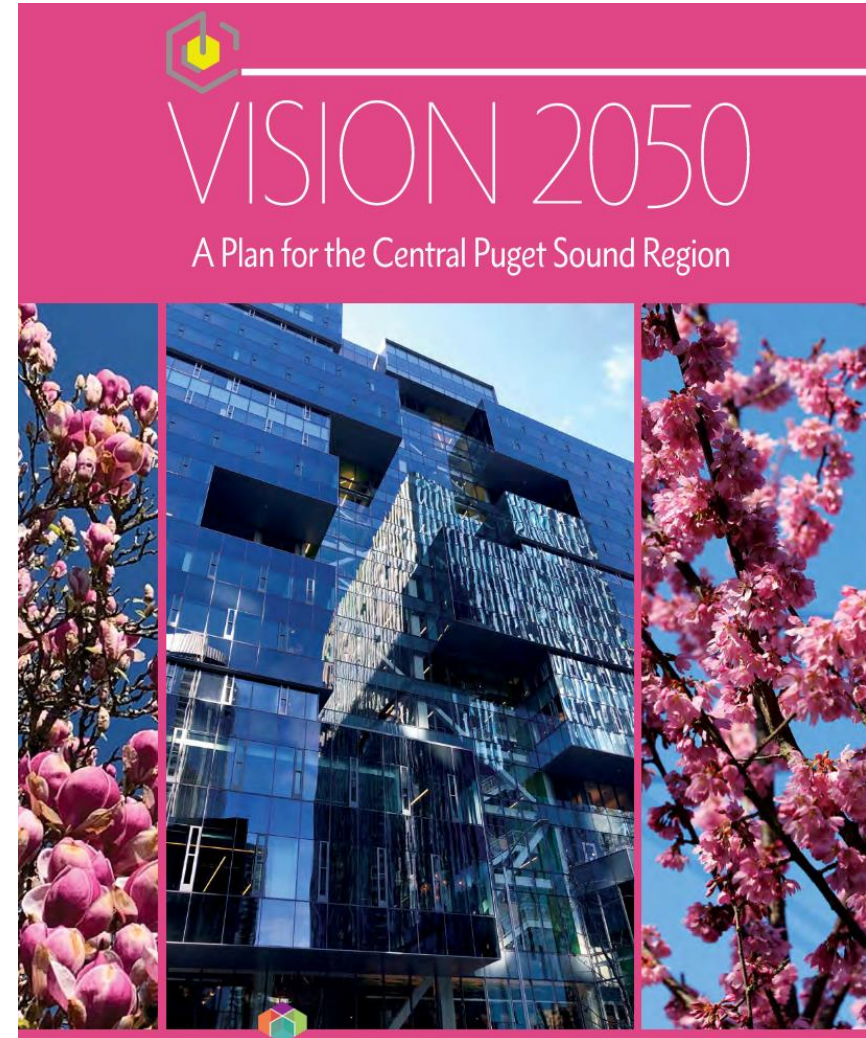
GROWTH MANAGEMENT ACT

RCW 36.70A.110 – Comprehensive Plans – Urban Growth Areas

(2) Based upon the growth management population projection made for the county by the office of financial management, the county and each city within the county shall include areas and densities sufficient to permit the urban growth that is projected to occur in the county or city for the succeeding twenty-year period...As part of this planning process, each city within the county must include areas sufficient to accommodate the broad range of needs and uses that will accompany the projected urban growth including, as appropriate, medical, governmental, institutional, commercial, service, retail, and other nonresidential uses.

VISION 2050

- VISION 2050's multicounty planning policies and regional growth strategy guide how the four-county region grows.
- Multicounty planning policies and regional growth strategy implemented through Countywide Planning Policies, comprehensive plans, and development regulations.



PSRC GUIDANCE FOR GROWTH TARGETS

- Guidance objectives:
 - Consistency with Vision 2050 Regional Growth Strategy
 - Provides best practices and methodologies to support a more consistent approach to target setting across the region
 - Support data and policy-informed decisions about growth
 - Information adjusted to 2044 planning horizon (from 2050)

VISION 2050 PLANNING RESOURCES

Guidance for Growth Targets to Implement VISION 2050



March 2021


Puget Sound Regional Council

VISION 2050 – REGIONAL GROWTH STRATEGY

Regional Growth Strategy County Population and Employment Control Totals 2017–2044 (Illustrative)

	POPULATION		EMPLOYMENT	
	Total	% Share	Total	% Share
King	724,000	50%	547,000	59%
Kitsap	80,000	5%	45,000	5%
Pierce	302,000	21%	157,000	17%
Snohomish	353,000	24%	180,000	19%
Region	1,458,000	100%	930,000	100%

Source PSRC Vision 2050 Planning Resources

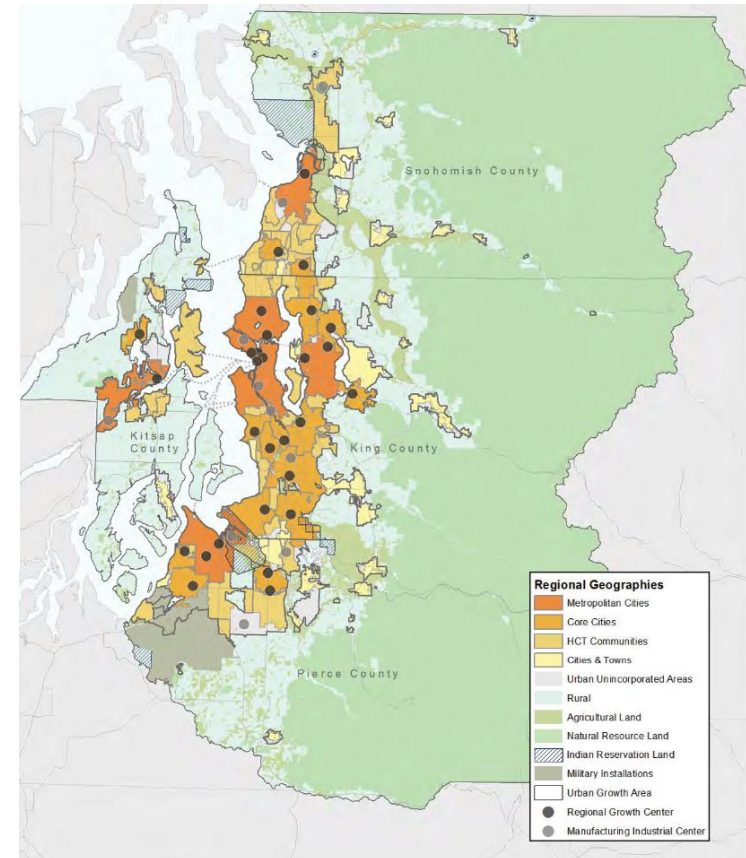
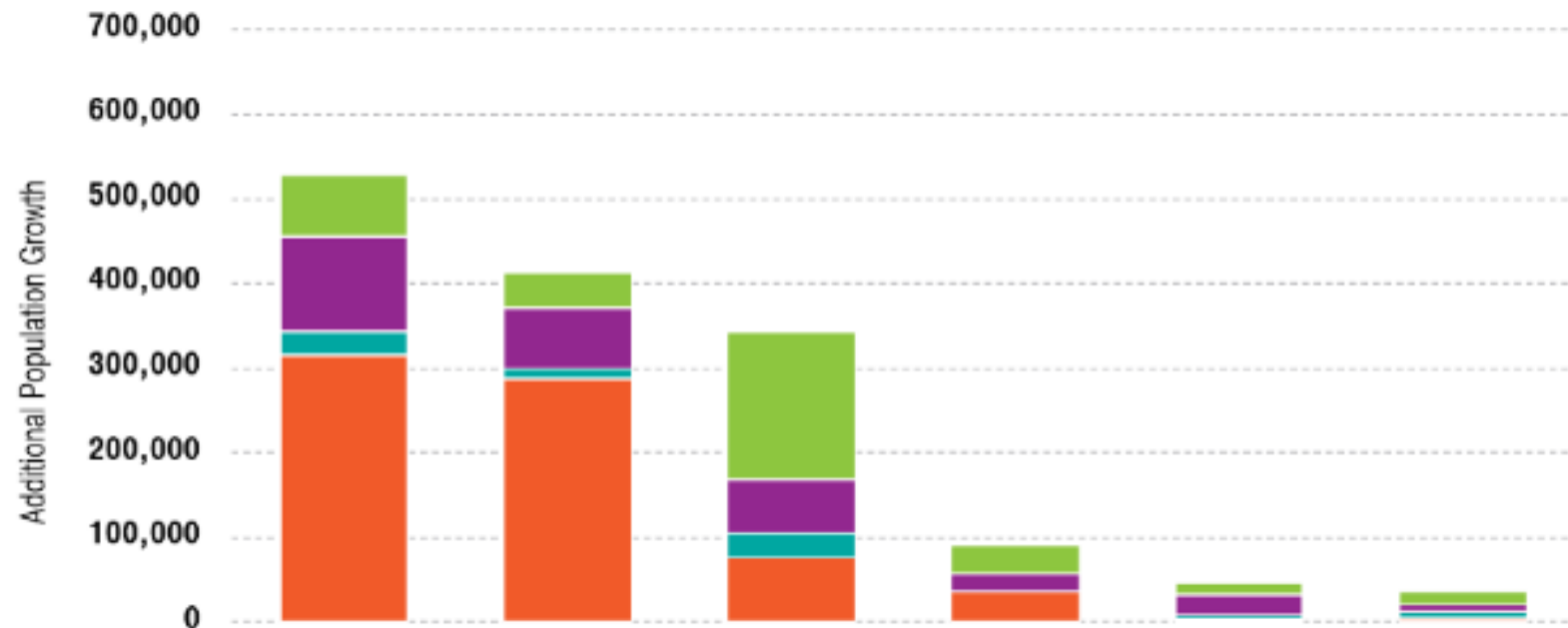


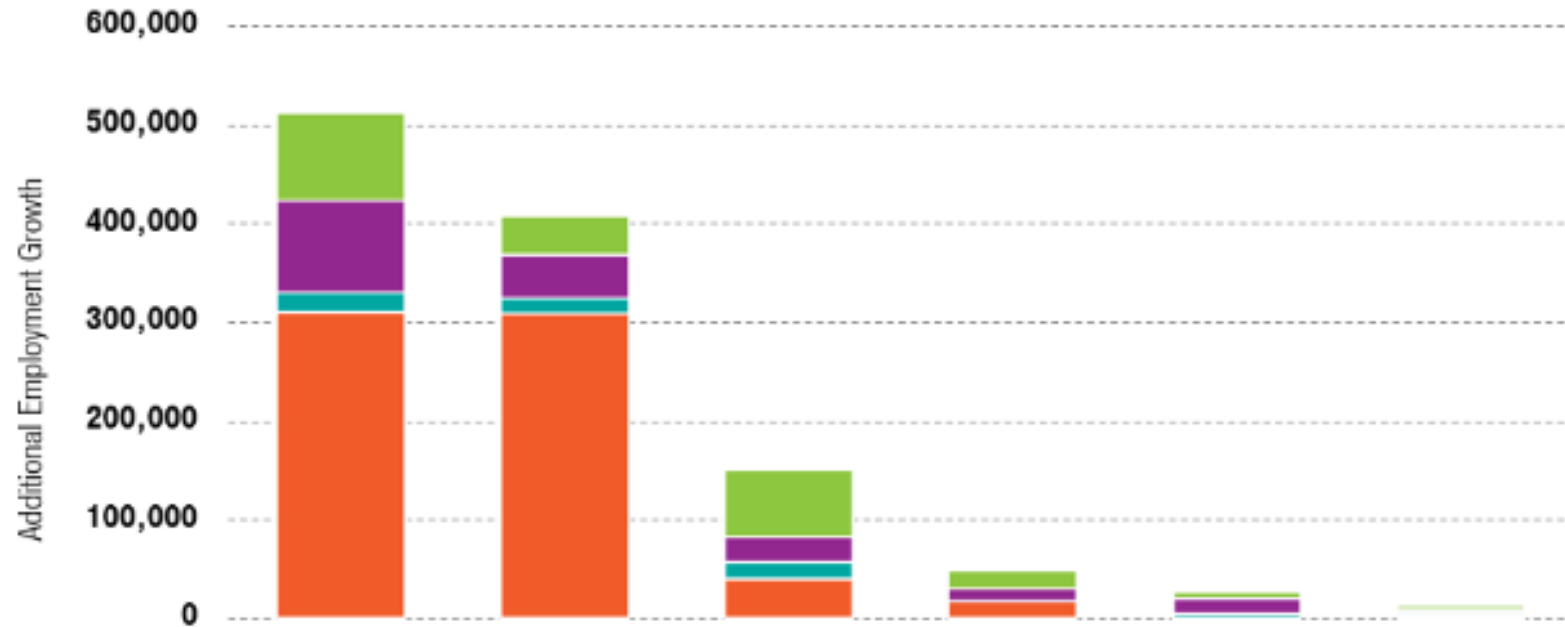
Figure 1 Regional Growth Strategy — Population Growth 2017–2044 (Illustrative)



County	Metropolitan Cities		Core Cities		High Capacity Transit Communities		Cities & Towns		Urban Unincorporated		Rural	
King	316,000	44%	288,000	40%	76,000	11%	36,000	5%	3,000	0%	5,000	1%
Kitsap	27,000	34%	12,000	16%	29,000	36%	-	0%	5,000	6%	7,000	8%
Pierce	113,000	38%	71,000	23%	64,000	21%	21,000	7%	24,000	8%	9,000	3%
Snohomish	72,000	20%	42,000	12%	174,000	50%	34,000	9.5%	15,000	4%	15,000	4.5%
Total	529,000	36%	412,000	28%	343,000	24%	91,000	6%	47,000	3%	36,000	2%



Figure 2 Regional Growth Strategy – Employment Growth 2017-2044 (Illustrative)



County	Metropolitan Cities		Core Cities		High Capacity Transit Communities		Cities & Towns		Urban Unincorporated		Rural	
	Count	%	Count	%	Count	%	Count	%	Count	%	Count	%
King	250,000	46%	248,000	45%	32,000	6%	14,000	3%	1,000	0%	2,000	0%
Kitsap	16,000	35%	12,000	26%	14,000	32%	-	0%	1,000	2%	2,000	5%
Pierce	76,000	48%	35,000	23%	23,000	15%	10,000	7%	9,000	6%	3,000	2%
Snohomish	71,000	39%	31,000	17%	55,000	30%	14,000	8%	6,000	2%	3,000	2%
Total	412,000	44%	327,000	35%	124,000	13%	39,000	4%	17,000	2%	10,000	1%



RGS ALLOCATIONS VS. CURRENT 2036 POPULATION DIST. (CPP)

RGS - VISION 2050

- **Metropolitan Cities 34%** – Bremerton and Bremerton UGA
- **Core City 16%** – Silverdale
- **High-Capacity Transit Communities 36%** – Bainbridge Island, Kingston, Port Orchard & Port Orchard UGA, Poulsbo and Poulsbo UGA
- **Urban Unincorporated 6%**
- **Rural Areas 8%**

Current adopted targets – 2036

- **Metropolitan Cities 23%** – Bremerton and Bremerton UGA
- **Core City 11%** – Silverdale
- **High-Capacity Transit Communities 35%** – Bainbridge Island, Kingston, Port Orchard & Port Orchard UGA, Poulsbo and Poulsbo UGA
- **Urban Unincorporated 8%**
- **Rural Areas 23%**

RGS ALLOCATIONS VS. CURRENT 2036 EMPLOYMENT TARGETS(CPP)

RGS – Vision 2050

- **Metropolitan Cities 35%** – Bremerton and Bremerton UGA
- **Core City 26%** – Silverdale
- **High-Capacity Transit Communities 32%** – Bainbridge Island, Kingston, Port Orchard & Port Orchard UGA, Poulsbo and Poulsbo UGA
- **Urban Unincorporated 2%**
- **Rural Areas 5%**

Current adopted targets -2036

- **Metropolitan Cities 42%** – Bremerton and Bremerton UGA
- **Core City 20%** – Silverdale
- **High-Capacity Transit Communities 27%** – Bainbridge Island, Kingston, Port Orchard & Port Orchard UGA, Poulsbo and Poulsbo UGA
- **Urban Unincorporated 3%**
- **Rural Areas 8%**

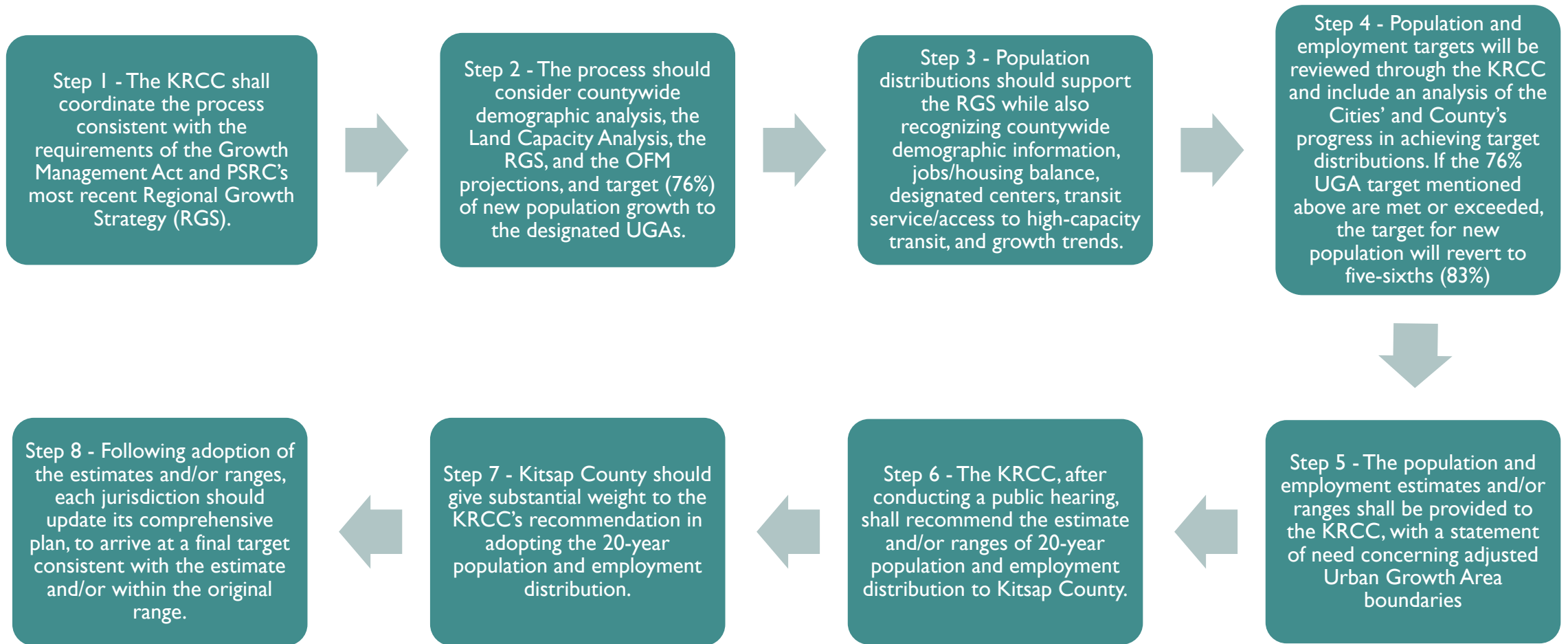
CONSIDERATIONS FOR TARGET SETTING

CURRENT CAPACITY VS. CAPACITY NEEDED FOR 2044

Exhibit 40. Population Capacity Summary

Jurisdiction	Population 2012	2012-2036 Growth Target	2012-2020 Population Growth	Remaining Target 2020-2036	2020 Population Capacity	Demand Minus Capacity
City of Bainbridge Island	23,090	5,570	1,980	3,590	5,301	1,711
City of Bremerton	39,650	12,432	2,100	10,332	16,896	6,564
Bremerton UGA	8,924	3,907	209	3,698	2,422	-1,276
Bremerton Total	48,574	16,339	2,309	14,030	19,318	5,288
City of Port Orchard	11,780	8,778	2,990	5,788	16,250	10,462
Port Orchard UGA	14,505	6,110	465	5,645	3,552	-2,093
Port Orchard Total	26,285	14,888	3,455	11,433	19,802	8,369
City of Poulsbo	9,360	1,192	2,190	-998	4,581	5,579
Poulsbo UGA	473	3,786	9	3,777	965	-2,812
Poulsbo Total	9,833	4,978	2,199	2,779	5,546	2,767
Central Kitsap UGA	22,527	6,842	1,092	5,750	4,956	-794

TARGET SETTING PROCESS – CPP – UGA-5



CONSIDERATIONS MOVING FORWARD

As jurisdictions develop recommendations for growth targets this fall, they will consider the following:

- Consistency with the Regional Growth Strategy
- Review of CPP – UGA-5 - policy for the distribution of 20-year population and employment growth
- How adopted targets translate to necessary land use changes
- New Housing Element requirements to implement (HB 1220)



QUESTIONS?