



KITSAP REGIONAL COORDINATING COUNCIL

EXECUTIVE BOARD RETREAT

March 4, 2021

Virtual Meeting:

- [Link: https://zoom.us/j/96679712173](https://zoom.us/j/96679712173)
- Phone: 253-215-8782
- Meeting ID: 96679712173#

WELCOME AND INTRODUCTIONS

The purpose of the 2021 KRCC Board retreat is to embed social, racial, economic, and tribal equity principles into Kitsap's Countywide Planning Policies.

It is also a chance to begin a conversation about implementing an equity framework as part of KRCC's upcoming work program related to land use and transportation.



RETREAT OVERVIEW

- Warm up activity
- Panel discussion
- Updated data and research
- Review of proposed equity components of CPPs
- Breakout group discussions
- Full group discussion
- Public comment
- Adjourn



GROUND RULES

- Treat each other with respect and dignity.
- Understand unequal systems exist.
- Avoid assumptions or generalizations about social groups.
- Everyone is capable of doing harm and being harmed.
- Move up and move back.
- Take care of your needs.
- Expect a lack of closure.
- Speak from your own perspective.



ADDITIONAL RETREAT DETAILS

- The retreat will *not* be recorded (only notetaking).
- Kizz Prusia, KRCC Land Use Coordinator, will act as the technology point of contact and can be reached at 626-373-4763 if you need help with Zoom.
- This is a public meeting.



INTERACTION!

Mentimeter Word Cloud

Visit www.menti.com on your phone or new browser window.

Enter the code: 69 47 08 1 (spaces don't matter)



KEY DEFINITION

Equity: all people have the resources and opportunities to improve the quality of their lives and reach their full potential. Differences in life outcomes cannot be predicted by race, class, or any other identity. Those affected by poverty, communities of color, and historically marginalized communities are engaged in decision-making processes, planning, and policy making.

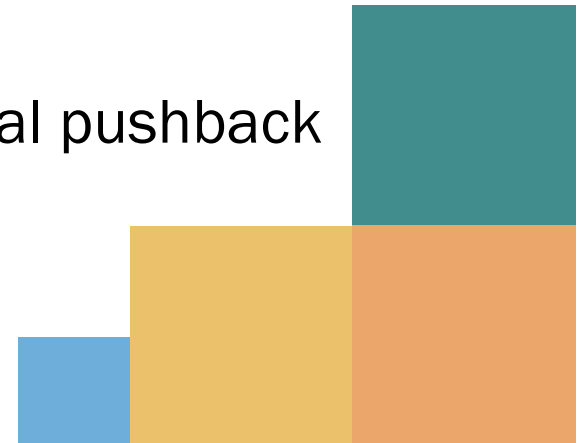
*Source: Puget Sound Regional Council
VISION 2050 Appendix H: Equity Analysis*



PANEL DISCUSSION

Questions:

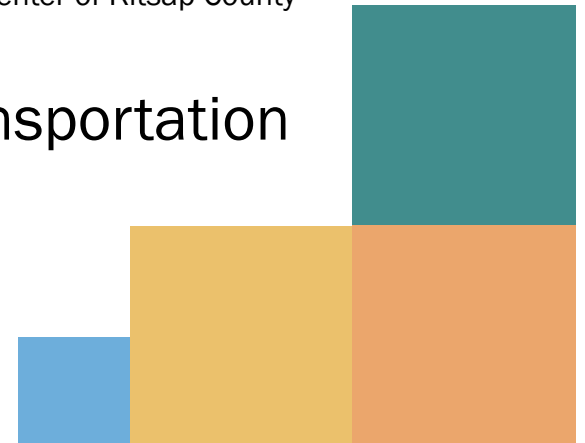
- Where do you see structural inequities as a result of land use and transportation policies?
- What do policy makers need to understand to make more equitable land use and transportation policies?
- What is your vision for an equitable transportation system in Kitsap?
- What are strategies for overcoming local pushback against affordable housing?



PANEL DISCUSSION

Panelists (alphabetical by last name):

- Joel Adamson, Homes of Compassion
- Barbie-Danielle DeCarlo, Equity Consultant
- Dionne Deschenne, Kitsap County's Council for Human Rights (+ Policy & Grant Writer, Port Gamble S'Klallam Tribe; Advisor, Olympic College Workforce Development Advisory Council; Treasurer, Dispute Resolution Center of Kitsap County Board of Directors)
- Annya Pintak, Seattle Department of Transportation Equity Program Manager



BREAK

INTERACTION!

Mentimeter Quiz

Visit www.menti.com on your phone or new browser window.

Enter the code: 69 47 08 1 (spaces don't matter)



CORRECTED DATA RE: SUQUAMISH TRIBE

Population

- 1,218 enrolled Tribal members

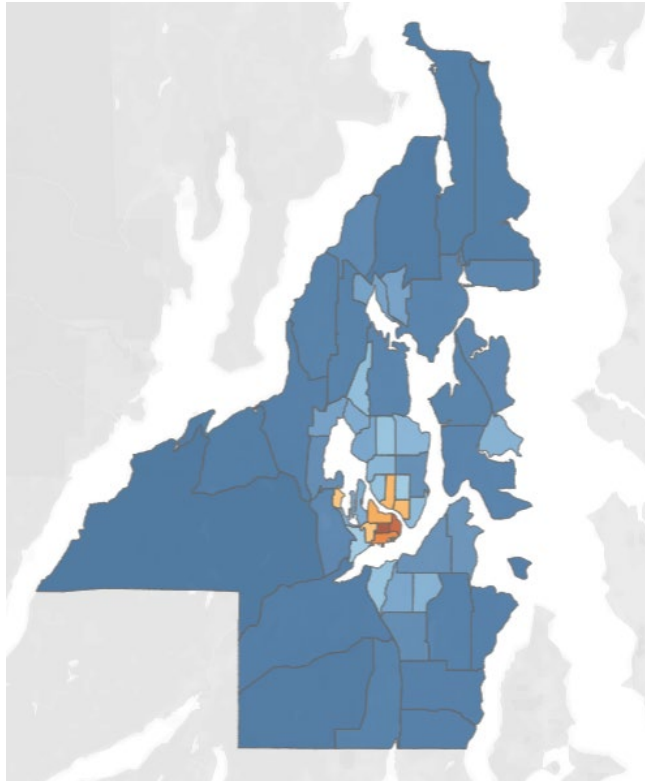
Employment

- 384 persons employed with Tribal government
- 1,024 persons employed in other sectors

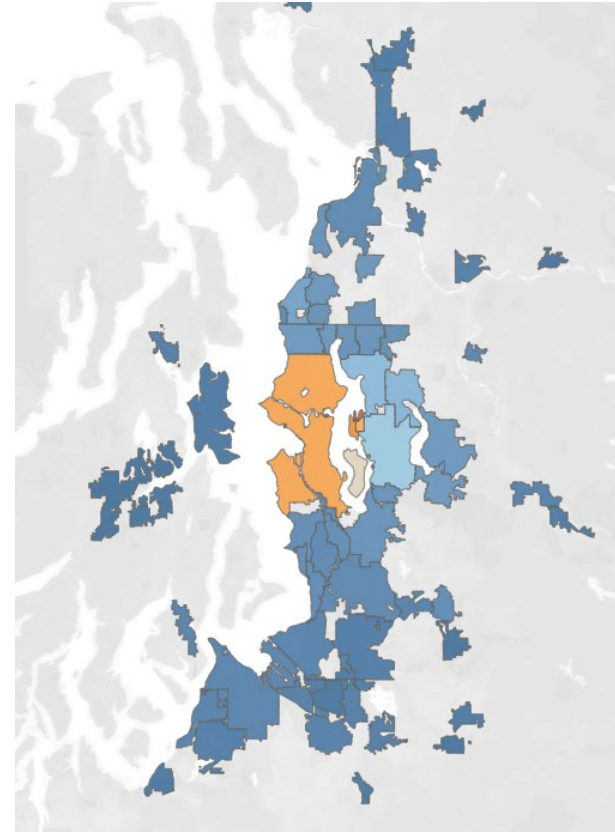
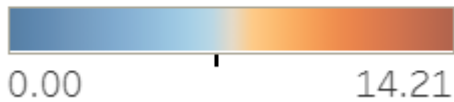
Thank you to the Suquamish Tribe for correcting the outdated Census data presented at the February 2, 2021 KRCC Board meeting.

UPDATED MAPS

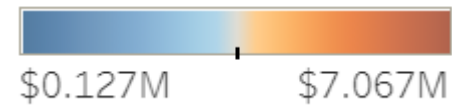
https://public.tableau.com/profile/psrc.data#!/vizhome/PopulationDensity_16137073483150/Sheet1



2020 Population Density



Assessed Value Per Acre



https://public.tableau.com/profile/psrc.data#!/vizhome/AssessedValues_16137174326880/Story1

HOW DID WE GET HERE?

Brief history of Kitsap's land use policies and inequitable outcomes. Research help was provided by Kitsap Regional Library.

WWII-ERA PUBLIC HOUSING PROJECTS

“The first segregated housing community in Bremerton, Sinclair Heights was created to serve the flood of black families recruited to this area to work in the shipyard during war time.”

- [A community apart, Kitsap Sun](#)

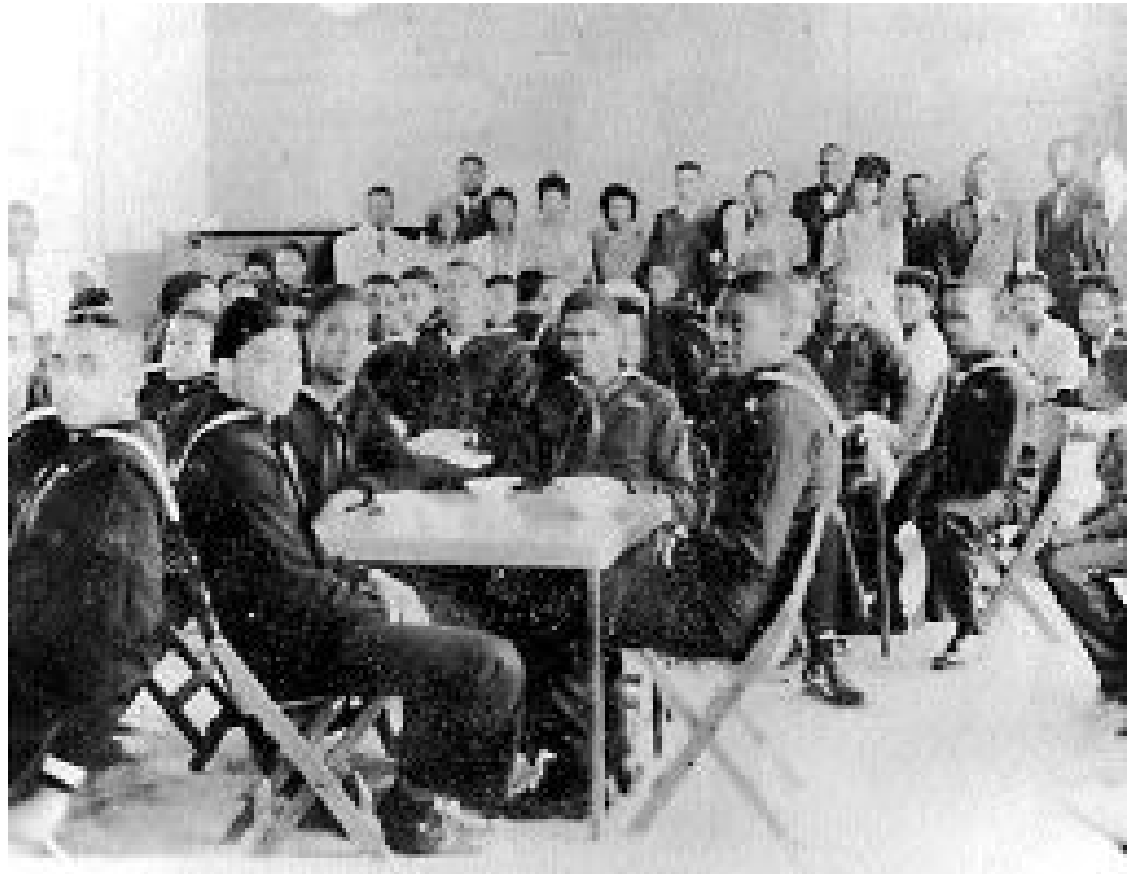
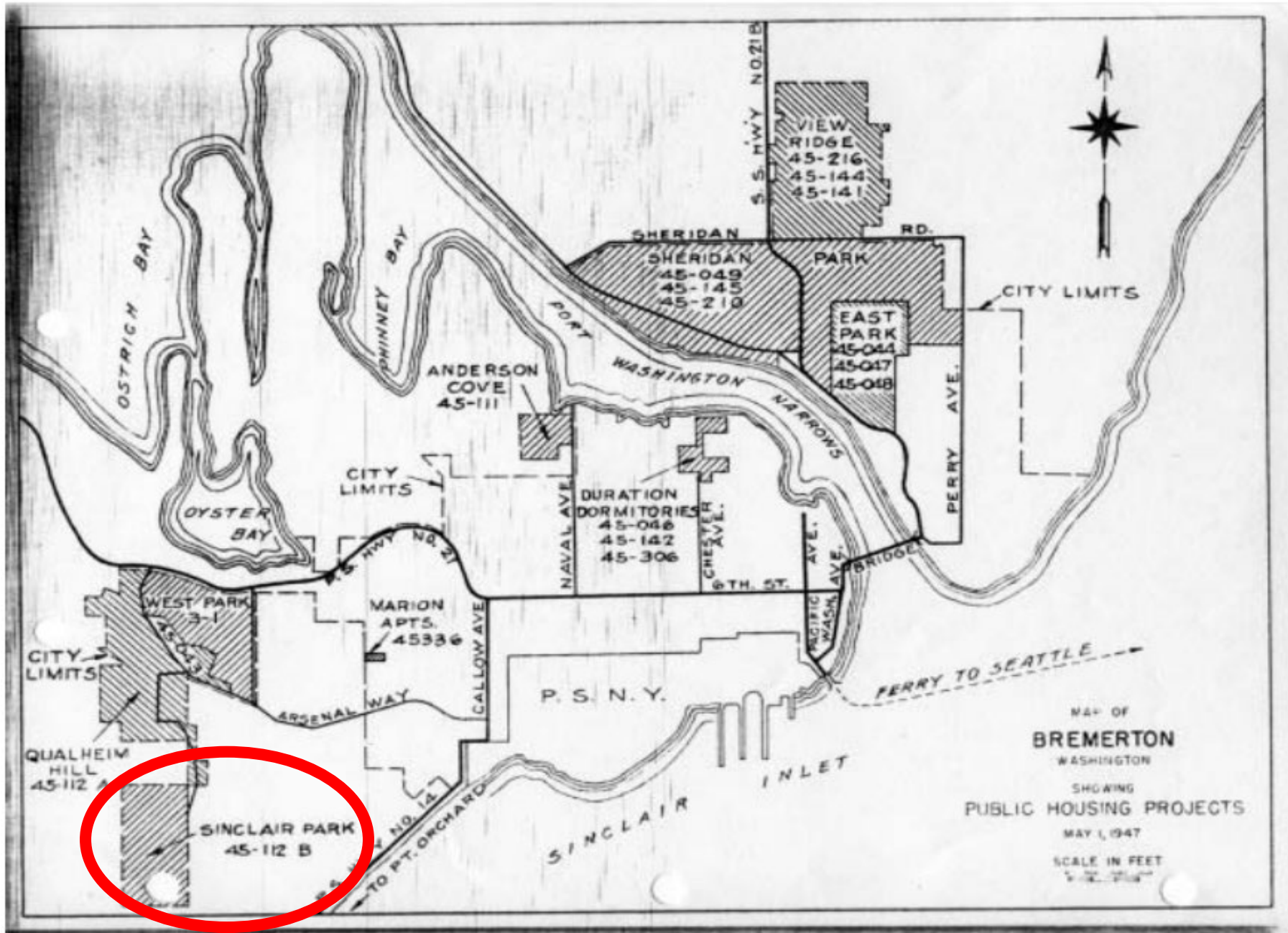


Image: “Black Navy sailors join residents of Sinclair Heights for a Mother’s Day dinner at the neighborhood’s community center in 1944”



WARTIME HOUSING MAP. SOURCE: U. S. NATIONAL ARCHIVES AND RECORDS ADMINISTRATION, PACIFIC ALASKA REGION FACILITIES, SEATTLE: RECORD GROUP NO. 181, NAVAL DISTRICTS AND SHORE ESTABLISHMENT, 13TH NAVAL DISTRICT.

WWII-ERA PUBLIC HOUSING PROJECTS



Image: Map of Sinclair Park community. In red is the Sinclair Park Community Center, the hub of the neighborhood.

Source: [Bremerton Housing Authority](#)

“Originally, Sinclair Heights was planned as an integrated housing development... However, after receiving several complaints from white residents who objected to living next to black families...the Bremerton Housing Authority created the segregated community near Pendergast Park.”

- [A community apart, Kitsap Sun](#)

POST-WWII HOUSING DISCRIMINATION

“In Washington State, the push to remove the covenants that denied minorities equal access to housing began in the late 1940s and finally came to pass in the 1960s ... De facto housing segregation via ‘gentlemen's agreements’ and ‘redlining’ existed in Bremerton well into the 1960s, according to the Walkers.”

- [Profile of Lillian Walker, Civil rights pioneer](#)



Image: James and Lillian Walker in the 1990s

POST-WWII HOUSING DISCRIMINATION

[Discrimination comes under local spotlight, Kitsap Sun, 2005](#)



Image: Alyce Eagans, Hazel Colvin, Dianne Robinson, and Lillian Walker in 2009

Source: [Profile of Lillian Walker](#)

“Dianne Robinson, who is black, said she had to bring her builder, who is white, to the bank to vouch for her ability to pay back the money. The year? 1972.”

“Bremerton received 20 complaints [between 2000 and 2005]. Most dealt with race or disabilities. The lion's share involved rentals...an anonymous person complained of an apartment in Bremerton that wouldn't rent to blacks.”

OVERVIEW OF EQUITY COMPONENTS OF CPPs


Clay White, LDC, Inc.

BREAKOUT GROUPS

Each breakout group will flow through five topics (10 minutes each).

- Vision Statement
- Land Use (Elements A and F)
- Natural Environment (Element E)
- Economic Development (Element J) and Housing (Element I)
- Transportation (Element H)

Everyone – elected officials, staff, and guests – are encouraged to participate.

Element E: Natural Environment 

- Investments in parks and open space should consider proximity to vulnerable populations.
- Reduce environmental impacts on vulnerable populations.

Feedback on policies (to be considered as part of CPP review process)

Suggestions for implementation (follow up at future Board meetings)

GROUP DISCUSSION

- Facilitators report out from their groups



PUBLIC COMMENTS



ADJOURN



Extra Slides

POST-WWII HOUSING DISCRIMINATION

Potential solutions shared by community members at a 2005 public meeting:

- Improve awareness of fair housing laws
- Improve awareness of first-time buyer programs
- Change policies in the state Growth Management Act to allow for the creation of more affordable housing
- Improved infrastructure within Kitsap's urban growth areas

- [Discrimination comes under local spotlight, Kitsap Sun, 2005](#)