



Kitsap Regional Coordinating Council

TransPOL Meeting Agenda

Thursday, April 18, 2024 | 3:00-4:30 PM

To Participate:

In-person: Port of Bremerton's Office 8850 SW State Hwy 3, Bremerton, WA 98312

Online: Link to participate in the video conference and view the screen share:

<https://us06web.zoom.us/j/84741966697>

- To participate by phone only: Dial 253-215-8782 and enter the webinar ID: 847 4196 6697.

A. Welcome and Business

- Review and approve draft [March 21, 2024 TransPOL summary](#) (pg. 2)
- For reference: [2024 KRCC Transportation Program Meeting Plan](#) (pg. 5)

B. 2024 Countywide and Regional Competitions

- Review updated [2012-2022 PSRC transportation funding](#) (pg. 6)
- Review [Competition Calendar](#) (pg. 14)
- [Overview of Countywide Competition](#) projects (pg. 15)
- Countywide Competition presentations by project sponsors
 - [Bainbridge Island](#) (pg. 16)
 - [Bremerton](#) (pg. 18)
 - [Kitsap County](#) (pg. 23)
 - [Kitsap Transit](#) (pg. 34)
 - [Port of Bremerton](#) (pg. 49)
 - [Port Orchard](#) (pg. 54)
 - [Poulsbo](#) (pg. 59)
- Questions and answers

C. Cross-Jurisdictional Transportation Issues

- Discuss updates

CI. Transportation Policy Board and Other PSRC Updates

- Report out on the latest [Transportation Policy Board meeting](#) (pg. 65)
- Review new [Transportation Policy Board representatives from Kitsap](#) (pg. 67)

CII. Corridor Updates

- SR 305, SR 16/Gorst, SR 104 (including Hood Canal), SR 307

CIII. Announcements and Next Steps

- Announcements from TransPOL
- Review action items
- Next TransPOL meeting: 5/30 at the Port of Bremerton (same day as PSRC General Assembly)

CIV. Public Comments



Kitsap Regional Coordinating Council (KRCC)
Transportation Policy Committee (TransPOL) Meeting Summary
 March 21, 2024 Meeting | 3:00 – 4:30 PM | Remote Meeting
 v. 4/3/2024

Decisions		
<ul style="list-style-type: none"> TransPOL members support adding “climate change” to the criteria title in the Countywide Competition Call for Projects 		
Actions	Who	Status
Upload the approved meeting summary to the KRCC website.	KRCC Staff	Complete
Email regional transportation competition project presentations to all TransPOL members	KRCC Staff	Complete

A. WELCOME AND OLD BUSINESS

Sophie Glass, KRCC Program Lead, welcomed participants to the KRCC Transportation Policy Committee (TransPOL) virtual meeting (see Attachment A for a list of TransPOL members and observers). TransPOL members approved their January 2024 meeting summary. Sophie reviewed the agenda, topics of discussion, the purpose of the meeting, and the 2024 KRCC Transportation Program Meeting Plan.

B. 2024 COUNTYWIDE AND REGIONAL COMPETITIONS

TransPOL members discussed incorporating climate change in the Call for Projects appendix. Sophie presented TransTAC's suggestion to change the evaluation criteria title to “Climate Change, Air Quality, and Emissions Reduction” to incorporate climate change while maintaining succinctness. TransPOL members supported this update.

TransPOL members reviewed the 2012-2022 regional and countywide competition funding data. There were no questions or comments on it.

C. PRESENTATIONS FOR REGIONAL TRANSPORTATION COMPETITION PROJECTS

Project sponsors presented their regional transportation competition projects.

David Forte, Kitsap County, presented the Ridgetop-Mickelberry to Myhre Project. TransPOL members provided the following feedback:

- The lack of roundabouts will not be well-received by PSRC.

Arne Bakker, Port of Bremerton, presented the Airport Way Phase 2.2 Project. TransPOL members provided the following feedback:

- Mayor Wheeler shared that the City of Bremerton will endorse the project in the competition.
- PSRC is discouraging projects with capacity increases.
- Mention the project is on undeveloped property that is zoned for business and industry.
- Share that the project is creating an important link for connectivity to undeveloped land.
- Emphasize that the project could produce regional jobs and support people moving into the region.

D. CROSS-JURISDICTIONAL TRANSPORTATION ISSUES

TransPOL members had no updates on areas of policy interest.

E. TRANSPORTATION POLICY BOARD AND OTHER PSRC UPDATES

Councilmember Schneider shared that the PSRC Regional Transportation Plan will soon be updated with livability, health, sidewalks, and increased sensitivity testing. Additionally, project tracking is complicated when projects cannot perform as initially intended. PSRC is discussing how to use federal money most efficiently in these situations. Lastly, PSRC is apprehensive about the financial impact of the potential overturn of the Climate Commitment Act (CCA). The 2024 PSRC General Assembly will be on May 30th.

F. CORRIDOR UPDATES

TransPOL members shared updates on the main corridors in Kitsap County. Councilmember Schnieder is interested in starting a conversation with WSDOT concerning multimodal plans for the Agate Pass bridge. Mayor Erickson wants to discuss Bainbridge Island 305 at the next meeting. Commissioner Strakeljahn shared that Gorst Corridor has acquired 4.1 million dollars and in total has approximately eighty million. They will start allocating funds to engineering design and will potentially host an information session.

G. ANNOUNCEMENTS AND NEXT STEPS

The next TransPOL meetings will be on April 18th and May 30th at the Port of Bremerton.

H. ADJOURN

The meeting was adjourned at 4:30 p.m.

Attachment A: Meeting Attendees

NAME	JURISDICTION
TRANSPOL MEMBERS:	
Council Member Schneider	City of Bainbridge
Mayor Wheeler	City of Bremerton
Council Member Coughlin	City of Bremerton
Commissioner Strakeljahn	Port of Bremerton
Director Clauson	Kitsap Transit
Commissioner McClure	Port of Kingston
TRANSTAC MEMBERS:	
David Forte	Kitsap County
Joe Ruttan	Kitsap County
Ned Lever	City of Bremerton
Josh Ranes	City of Poulsbo
Arne Bakker	Port of Bremerton
STAFF:	
Sophie Glass	KRCC
Emilie Pilchowski	KRCC



Kitsap Regional Coordinating Council

Tentative 2024 Meeting Plan for Transportation Technical Advisory Committee (TransTAC) and Transportation Policy Committee (TransPOL)

DRAFT v. 3/25/2024

<p>April 4th TransTAC Meeting (Hybrid) Bremerton (NDGC)</p>	<p>April 18th TransPOL Meeting (Hybrid) Port of Bremerton</p>	<p>May 28th TransTAC Meeting (Hybrid) Kitsap Transit</p>	<p>May 30th TranPOL Meeting (Hybrid) Port of Bremerton</p>
<p>Agenda Items:</p> <ul style="list-style-type: none"> • Presentations of Countywide Competition Projects 	<p>Agenda Items:</p> <ul style="list-style-type: none"> • Presentation of Countywide Competition Projects 	<p>Agenda Items:</p> <ul style="list-style-type: none"> • Project Selection Workshop 	<p>Agenda Items:</p> <ul style="list-style-type: none"> • Recommend Countywide Projects for selection to Board
<p>September 12th TransTAC Meeting</p>	<p>October 17th TransPOL Meeting</p>		<p>December 14th TransTAC Meeting</p>
<p>Agenda Items:</p> <ul style="list-style-type: none"> • Debrief 2024 competitions • 2025 transportation program work plan 	<p>Agenda Items:</p> <ul style="list-style-type: none"> • Debrief 2024 competitions • 2025 transportation program work plan 		<p>Agenda Items:</p> <ul style="list-style-type: none"> • <i>TBD</i>



Kitsap Regional Coordinating Council

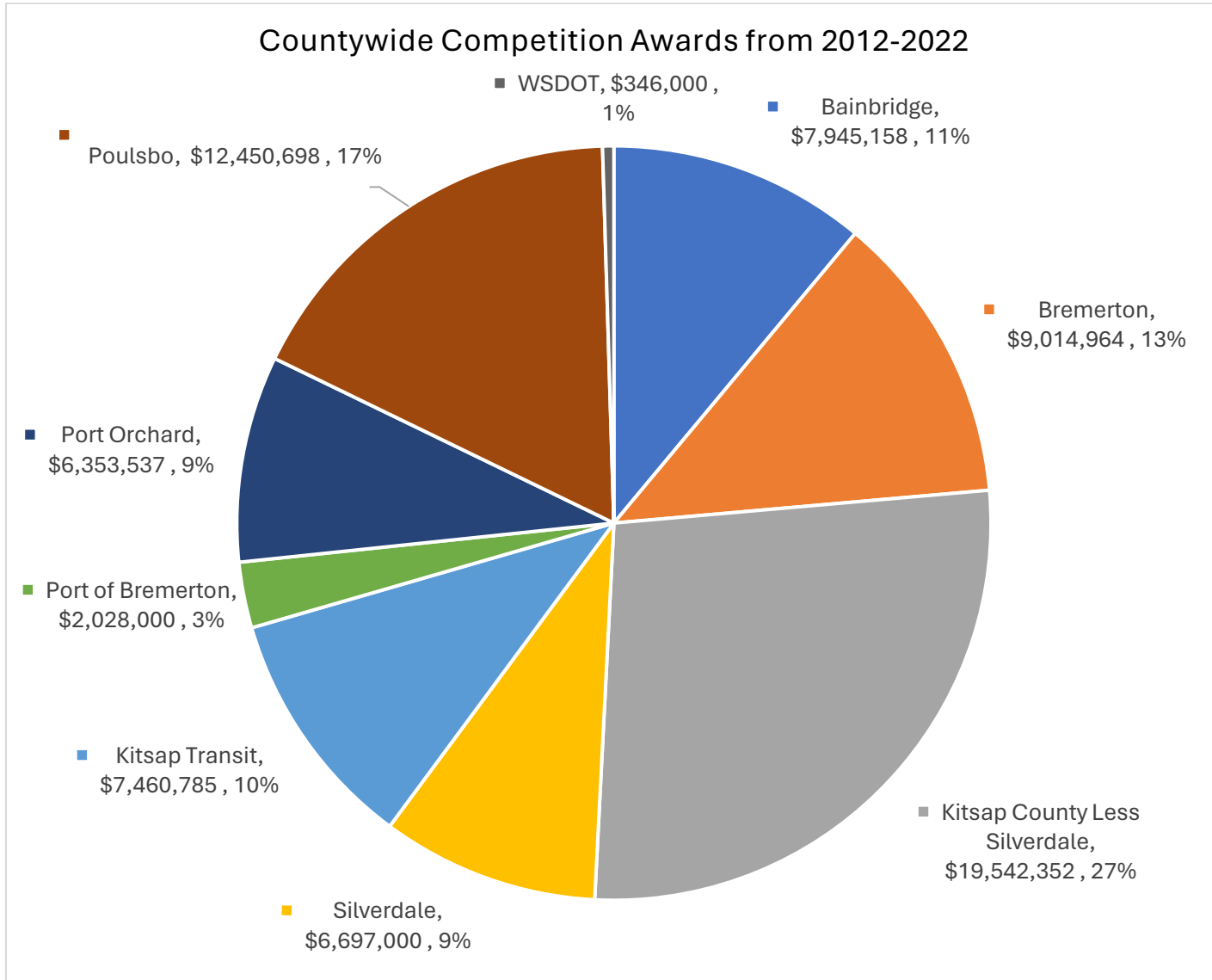
Federal Transportation Funds Awarded through the Countywide Competition from 2012-2022 v.3/04/2024

This page shows the allocation of awards to Kitsap jurisdictions from the Puget Sound Regional Council’s Regional competition forum for Federal Highway Administration’s (FHWA) Surface Transportation Program (STP) funds from 2012-2022. This data is inclusive of both returned funds and contingency project funding.

Jurisdiction	Award Year	Countywide Funding Amount	Percentage	Population (2023 OFM Data)	% of Population
Bainbridge Island	2012, 2013, 2014, 2016, 2018, 2020, 2021	\$7,945,158	11%	25,180	9%
Bremerton	2012, 2014, 2016, 2018, 2020, 2021, 2022	\$9,014,964	13%	44,640	16%
Kitsap Transit	2012, 2014, 2016, 2018, 2020, 2021, 2022	\$7,460,785	10%	N/A	N/A
Kitsap County (without Silverdale)	2012, 2014, 2016, 2018, 2020, 2021, 2022	\$19,542,352	27%	162,767	57%
Silverdale	2014, 2016, 2018	\$6,697,000	9%	20,733 (2020 Census)	7%
Poulsbo	2012, 2014, 2016, 2020, 2021, 2022	\$12,450,698	17%	12,400	4%
Port Orchard	2012, 2014, 2016, 2018, 2022	\$6,353,537	9%	17,480	6%
Port of Bremerton	2014	\$2,028,000	3%	N/A	N/A
WSDOT	2014	\$346,000	0%	N/A	N/A
TOTAL		\$71,838,494		283,200	



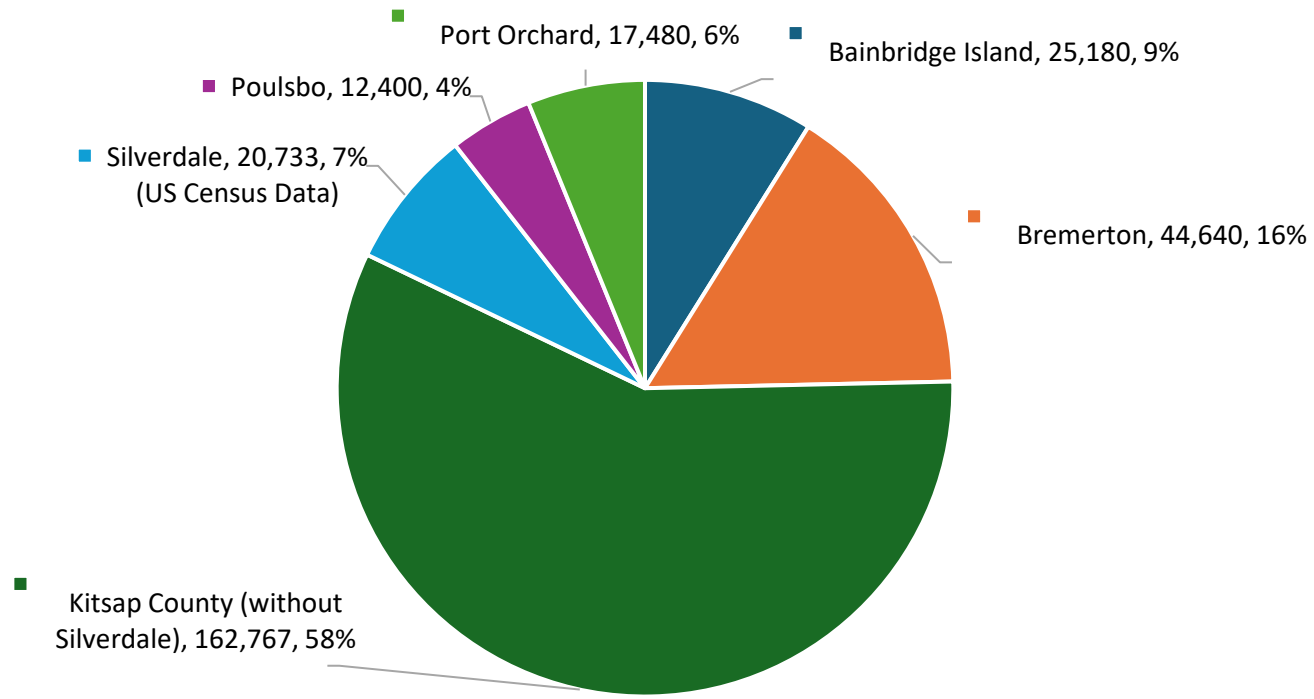
Kitsap Regional Coordinating Council





Kitsap Regional Coordinating Council

Kitsap County Population (2023 OFM Data)



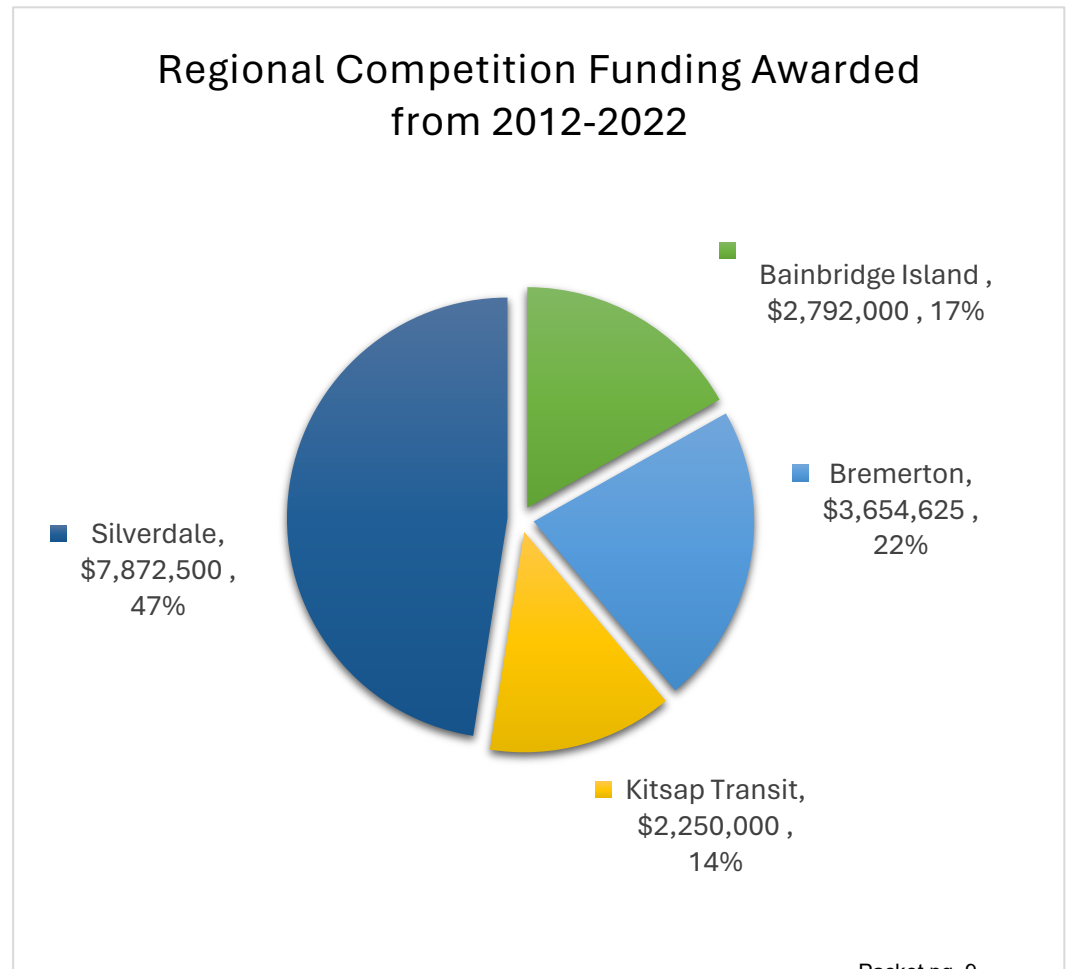


Kitsap Regional Coordinating Council

Federal Transportation Funds Awarded through the Regional Competition from 2012-2022 v.3/04/2024

This page shows the allocation of awards to Kitsap jurisdictions from the Kitsap Regional Coordinating Council's Countywide Competition forum for Federal Highway Administration (FHWA) funds from 2012-2022.

Jurisdiction	Amount	Percentage
Bainbridge Island	\$ 2,792,000	17%
Bremerton	\$ 3,654,625	22%
Kitsap Transit	\$ 2,250,000	14%
Silverdale	\$ 7,872,500	48%
Total	\$ 16,569,125	100%



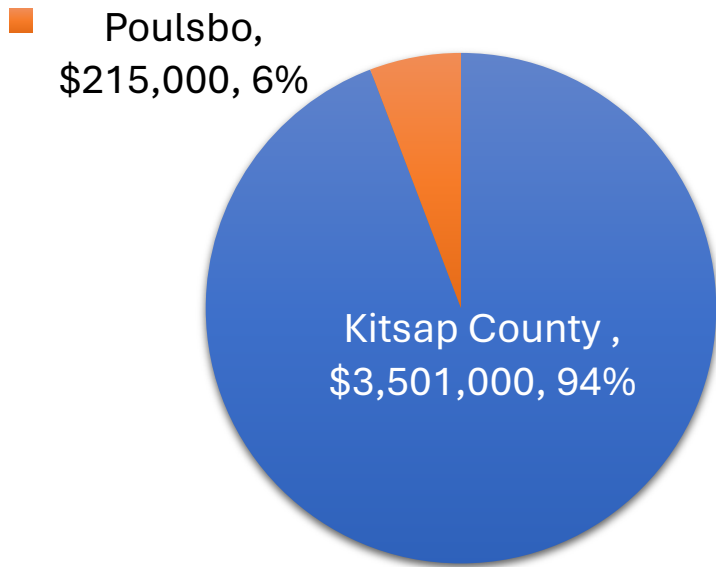


Kitsap Regional Coordinating Council

Federal Transportation Funds Awarded through the Rural Town Centers and Corridors (RTCC) forum from 2012-2022 v.3/04/2024

This page shows the allocation of awards to Kitsap jurisdictions from the Puget Sound Regional Council's Rural Town Centers and Corridors forum for Federal Highway Administration's (FHWA) Surface Transportation Program (STP) from 2012-2022.

Rural Town Centers and Corridors (RTCC) Funding Awarded from 2012-2022



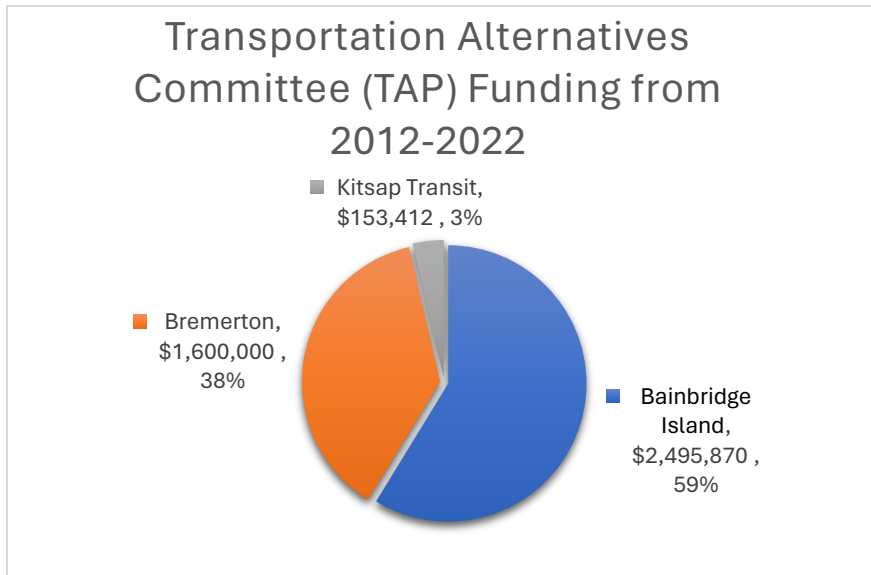
Jurisdiction	Regional Funding Amount	Percentage
Kitsap County	\$3,501,000	94%
Poulsbo	\$215,000	6%
TOTAL	\$3,716,000	



Kitsap Regional Coordinating Council

Federal Transportation Funds Awarded through the PSRC Transportation Alternatives Committee from 2012-2022 v.3/27/2024

This page shows the allocation of awards to Kitsap jurisdictions from PSRC’s Transportation Alternatives Committee (TAP) funds from 2012-2022.



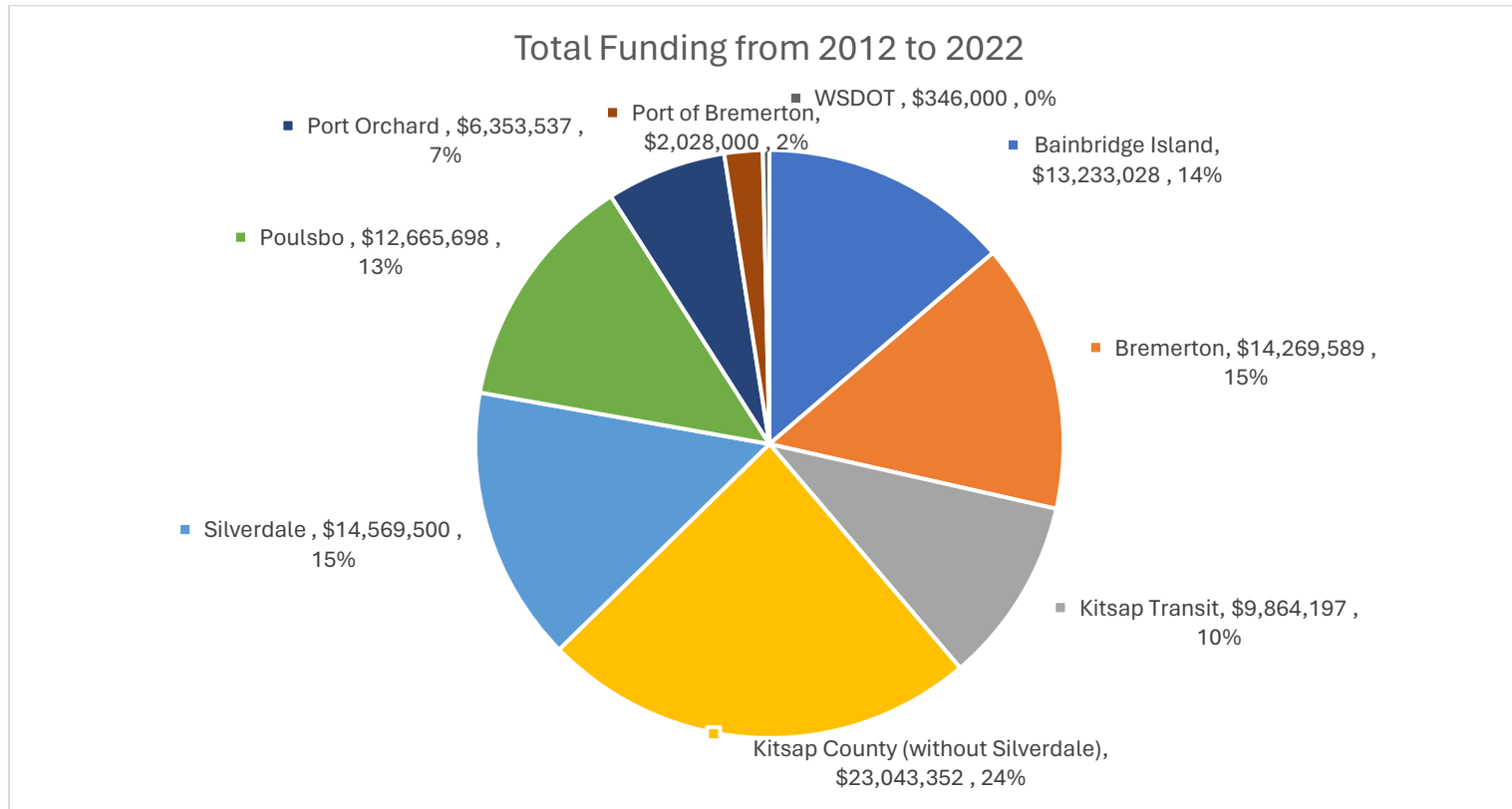
Jurisdiction	Regional Funding Amount	Percentage
Bainbridge Island	\$2,495,870	59%
Bremerton	\$1,600,000	38%
Kitsap Transit	\$153,412	4%
TOTAL	\$4,249,282	



Kitsap Regional Coordinating Council

Total Federal Transportation Funds Awarded through PSRC 2012-2022 v.3/27/2024

This page shows the allocation of all awards from 2012-2022 to Kitsap jurisdictions including Puget Sound Regional Council's Regional Competition forum for Federal Highway Administration's (FHWA) Surface Transportation Program (STP) funds, the Kitsap Regional Coordinating Council's Countywide Competition forum for Federal Highway Administration (FHWA) funds, the Puget Sound Regional Council's Rural Town Centers and Corridors forum for Federal Highway Administration's (FHWA) Surface Transportation Program (STP), and the Regional Transportation Alternatives Committee (TAP) funds.





Kitsap Regional Coordinating Council

Total Federal Transportation Funds Awarded through PSRC 2012-2022

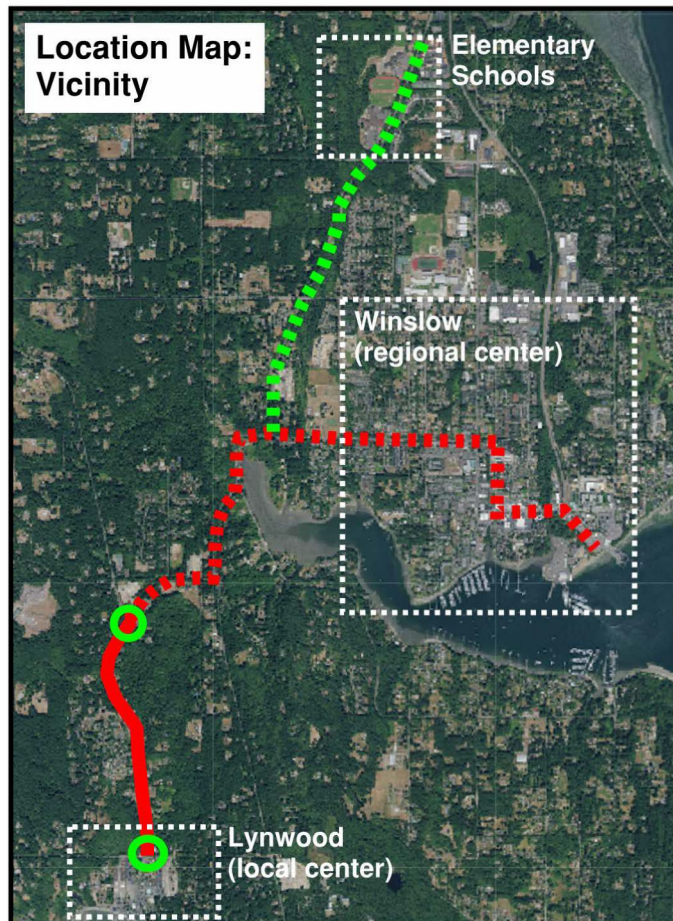
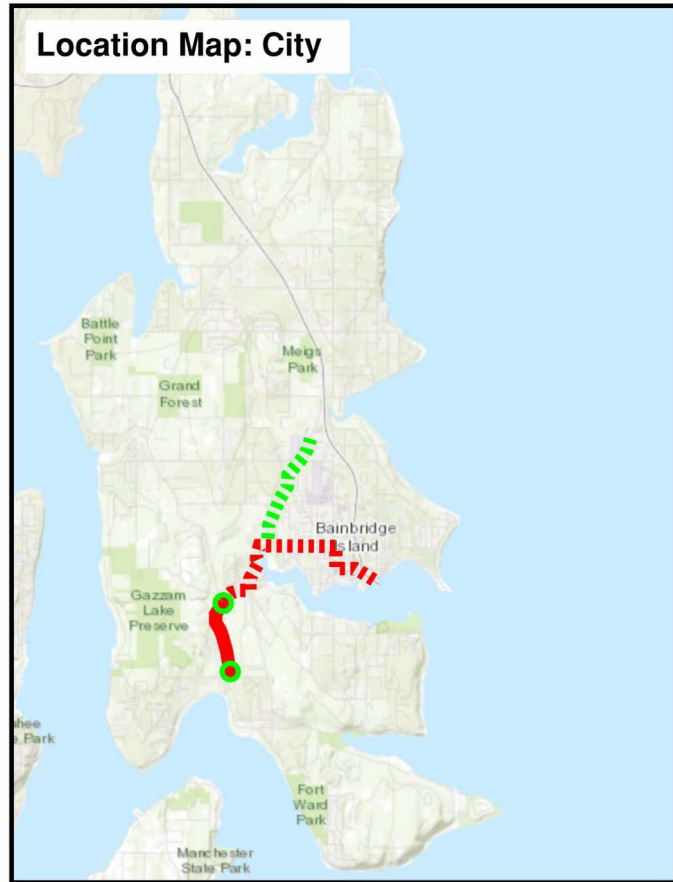
Jurisdiction	TAP Funding Amount	RTCC Funding Amount	Regional Funding Amount	Countywide Funding Amount	Total Funding	Percentage
Bainbridge Island	\$ 2,495,870		\$ 2,792,000	\$ 7,945,158	\$ 13,233,028	14%
Bremerton	\$ 1,600,000		\$ 3,654,625	\$ 9,014,964	\$ 14,269,589	15%
Kitsap Transit	\$ 153,412		\$ 2,250,000	\$ 7,460,785	\$ 9,864,197	10%
Kitsap County (without Silverdale)		\$ 3,501,000		\$ 19,542,352	\$ 23,043,352	24%
Silverdale			\$ 7,872,500	\$ 6,697,000	\$ 14,569,500	15%
Poulsbo		\$ 215,000		\$ 12,450,698	\$ 12,665,698	13%
Port Orchard				\$ 6,353,537	\$ 6,353,537	7%
Port of Bremerton				\$ 2,028,000	\$ 2,028,000	2%
WSDOT				\$ 346,000	\$ 346,000	0%
TOTAL					\$ 96,372,901	100%

13. DRAFT KRCC SCHEDULE FOR COUNTYWIDE AND REGIONAL COMPETITIONS

REGIONAL APPLICATION	
Task/Meeting	Date
TransTAC Meeting <i>Discuss Regional Projects</i>	1/18
TransPOL Meeting <i>Discuss Regional Projects</i>	1/18
PSRC Call for Regional Projects	2/5
PSRC Regional Workshop	Various
Screening Forms Due	3/4
TransTAC Meeting Regional project presentations	3/14
TransPOL Meeting Regional project presentations	3/21
Applications Due	4/8
TransPOL Meeting Updates re: Regional Projects	4/18
PSRC RPEC Regional Project presentations	4/25 and 4/26
KRCC Board Regional Project presentations	5/7
PSRC RPEC Project Selection Workshop	5/23- 5/24
Project recommendations due to PSRC	6/24

COUNTYWIDE APPLICATION	
Task/Meeting	Date
TransTAC Meeting <i>Review Call for Projects</i>	1/18
TransPOL Meeting <i>Recommend Call for Projects</i>	1/18
KRCC Board <i>Approve Call for Projects</i>	2/6
Release Countywide Call for Projects	2/7
TransTAC Meeting	2/8
KRCC Board Meeting	3/5
PSRC Countywide Screening Form Due	3/11
TransTAC Meeting PSRC Mini Workshop	3/14
TransTAC Meeting Countywide Projects Presentations	4/4
TransPOL Meeting Countywide Projects Presentations	4/18
KRCC Board Countywide Project presentations	5/7
TransTAC Meeting Review Board feedback	5/9
Countywide Applications Due	5/10
TransTAC members submit evaluations	???
KRCC staff air quality scoring	5/21
TransTAC Selection Workshop	5/28
TransPOL Meeting Review recommended projects	5/30
KRCC Board Meeting Approve Countywide Projects	6/4
Project recommendations due to PSRC	6/24

City of Bainbridge Island Countywide Project Proposal: Lynwood Center Road Non-Motorized Improvement Project



Project Scope: Preliminary Engineering

- 0.90 miles of vertically separated multi-use path on Lynwood Center Road between Fletcher Bay Road (N) and Baker Hill Road (S)
- Includes traffic calming features at Baker Hill Road intersection
- Identified in the City's Sustainable Transportation Plan as a priority "Connecting Centers" route between the Lynwood local center and Winslow regional center
- Connects to Bucklin Hill Road non-motorized improvements (S)

Project Cost: Preliminary Engineering

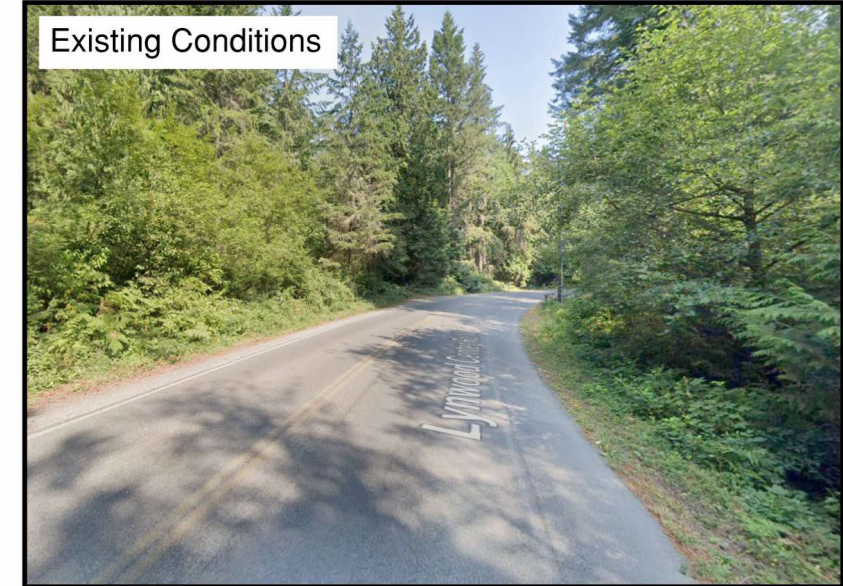
- Countywide Grant Support Request: **\$1M**
- Local match funds: **\$200K (20%)**

= Total preliminary engineering cost: **\$1.2M**

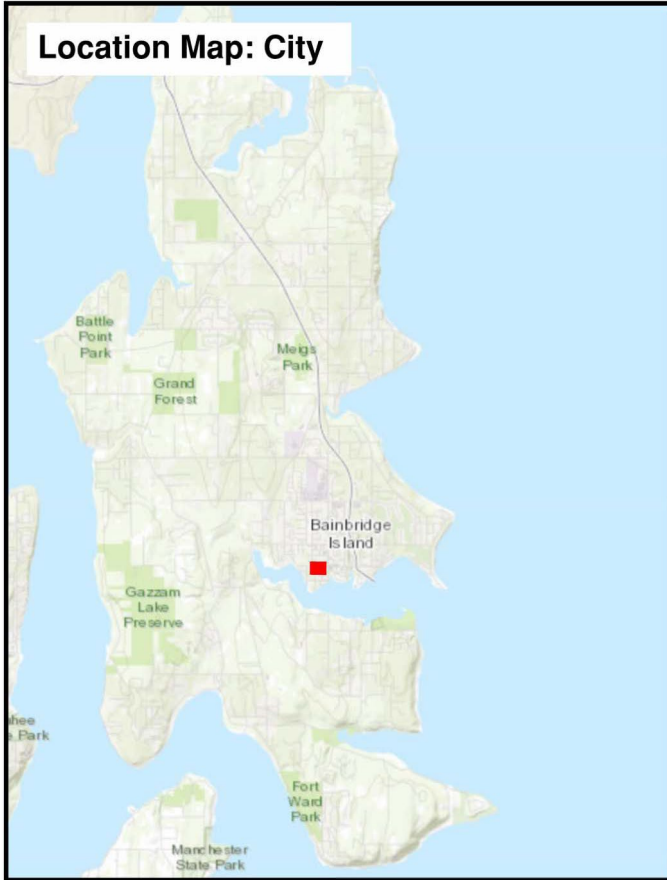
Obligation ready: 2026

Project Criteria:

- A.** Supports multi-modal investments between centers of growth; connects to existing or planned infrastructure
- C.** Project was selected through a robust community engagement process
- D.** Addresses multi-modal safety through all-ages-and-abilities design and traffic calming
- E.** Reduces single occupancy vehicle trips; reduces pollutants; supports non-motorized travel
- F.** Provides non-motorized benefits; serves more than one mode of transportation; connects to other local projects



City of Bainbridge Island Countywide Project Proposal: Winslow Way West Street Restoration and Sidewalk Infill Project



Project Scope: Preliminary Engineering

- 0.20 miles of pavement restoration (PCI 55)
- Sidewalk infill
- ADA accessibility improvements
- Locally funded water and sewer main replacement

Project Cost: Preliminary Engineering

- Countywide grant support request: **\$500K**
- Local match funds: **\$100K**

= Total preliminary engineering: **\$600K**

Obligation ready: 2026

Project Criteria:

A. Supports mobility for people traveling within the Winslow regional center; supports multi-modal transportation investments; fills a physical gap in the sidewalk system

D. Improves safety for pedestrians and improves ADA accessibility

E. Supports non-motorized travel; combines multiple improvements along the corridor (transportation and utilities) to condense construction-related greenhouse gas emissions impacts

F. Serves more than one mode of transportation; addresses gaps in the pedestrian facility system





City of Bremerton

11th Street Corridor Improvements



**Kitsap Regional Coordinating Council Countywide Competition
Spring 2024**

Project Scope

Design of a forward compatible phased roadway improvement project which provides a vital link between two City centers, adds pavement service life to this principal arterial, and brings the roadway up to ADA compliance for accessibility.

Project Overview and Benefits



- Improved Center Connectivity on a Major Transit Corridor
- Improves ADA Accessibility and Pedestrian Safety
- Improves Pavement Service Life
- Improved Environmental Sustainability

Project Considerations

PHASED CORRIDOR SEGMENTS

Phased Corridor Segments	Key Improvements		
	Pavement Preservation	ADA	Safety Enhancements
Naval Ave to Warren Ave	X	X	
Warren Ave to Pacific Ave *	X	X	X
Kitsap Way to Naval Ave **	X	X	X

* Includes pedestrian facilities & bike lanes (Planned Community Boulevard)

** Includes intersection improvements at Callow Ave (Added EB Left Turn Pocket)



Corridor-Wide Pavement Preservation Need ($\pm 20k$ Average Daily Vehicle Usage)

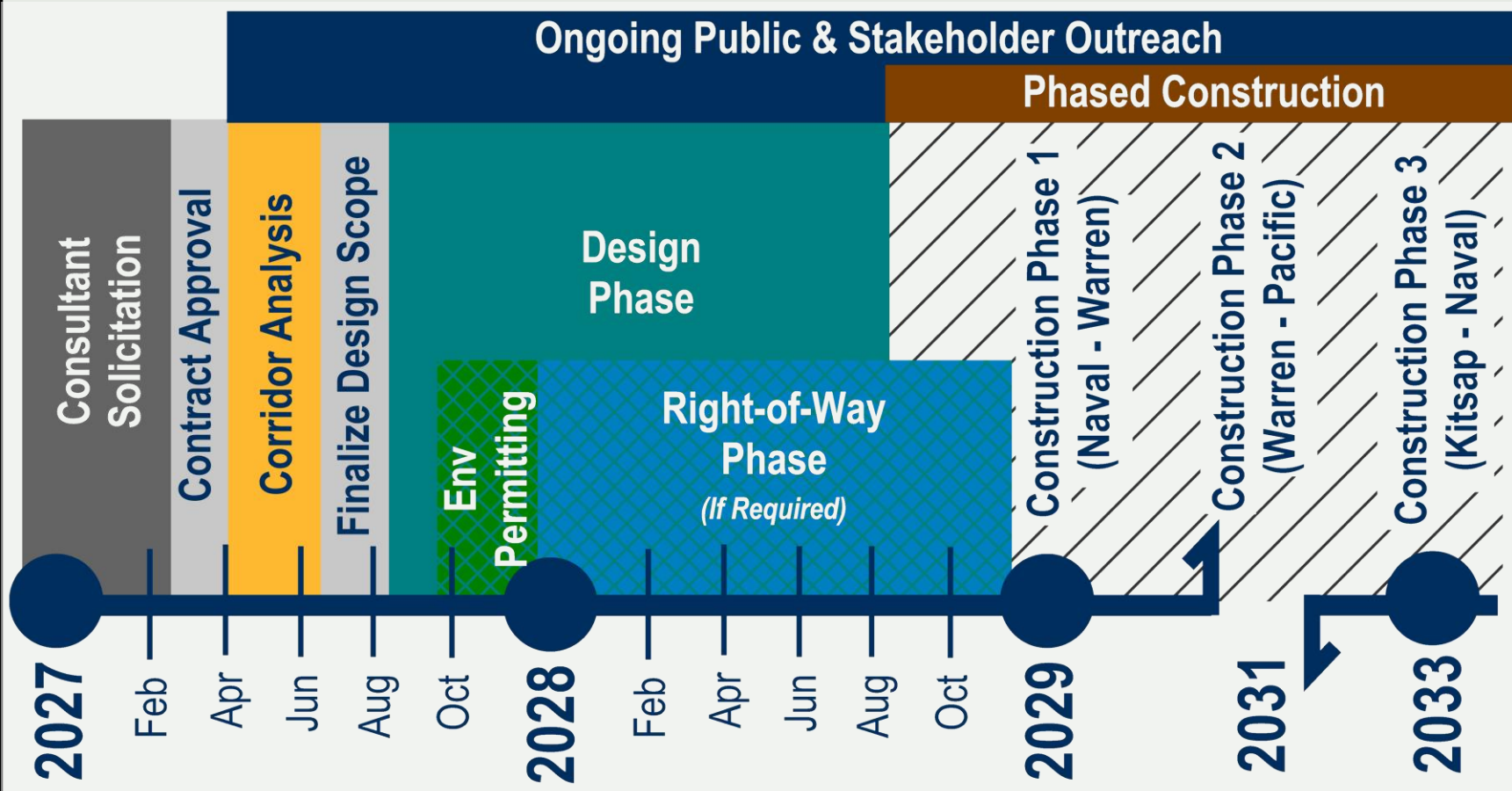


Corridor-Wide Need for ADA Improvements (Curb Ramps & Signalized Intersections)



11th at Callow Lacking Left-Turn Lane (Numerous Documented Rear End Collisions)

Project Implementation Plan



- **Begin Phased Corridor Design** once funding becomes available (Est. 2027)
- **Phased Construction** (Est. 2029 – 2033)
 - Phase 1 (2029): Naval to Warren
 - Phase 2 (2031): Warren to Pacific
 - Phase 3 (2033): Kitsap to Naval



PROJECT CONSTRUCTION COSTS (WITH DESIGN COSTS)

Phased Corridor Segments	Estimated Costs *	
	Design	Construction
Naval Ave to Warren Ave	\$527,000	\$2,520,000
Warren Ave to Pacific Ave	\$518,000	\$2,480,000
Kitsap Way to Naval Ave	\$425,000	\$2,034,000
OVERALL CORRIDOR TOTAL	\$1,470,000	\$7,034,000

* Includes Costs Escalated to 2028 (4% per Year)

PROJECT DESIGN FUNDING SOURCES

Funding Source	Amount
STBG (PSRC)	\$1,271,550
Local (REET)	\$198,450
TOTAL	\$1,470,000



Countywide Applications 2027-2028 STP Grant Competition

David Forte

Kitsap County Public Works

April 2024



Ridgetop – Mickelberry to Myhre

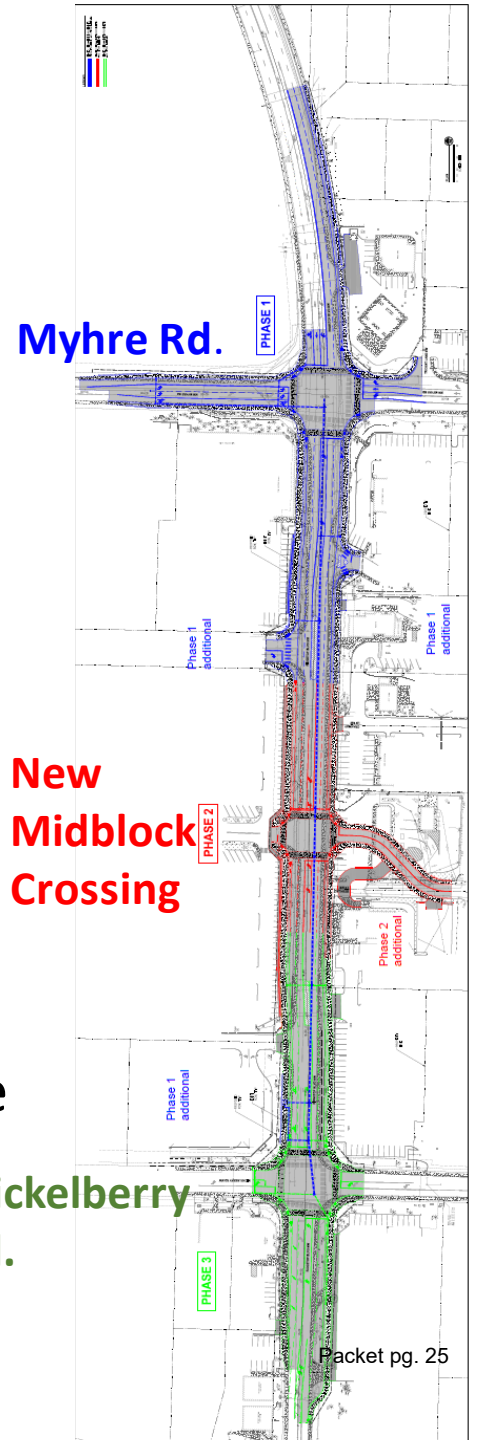
- Silverdale UGA, Population 20,783
 - +54% growth by 2044, will be 3rd largest urban area in Kitsap
- E-W Corridor, Silverdale Transit Center, SR 303
- Silverdale Regional Center
 - Regional medical services, destination retail, professional services, & restaurants

#1 priority Silverdale Transportation Implementation Strategy (S-TIS)



Ridgetop – Mickelberry to Myhre

- Widen to 4 lanes with access control to primarily support internal circulation and regional access to Transit
- Sidewalks & bike lanes
- Intersection improvements at Mickelberry & Myhre, and new mid-bloc intersection to break up superblock & support walking, biking, and transit access
- East of Myhre (to Transit Center), add 2nd EB lane & uphill bike lane



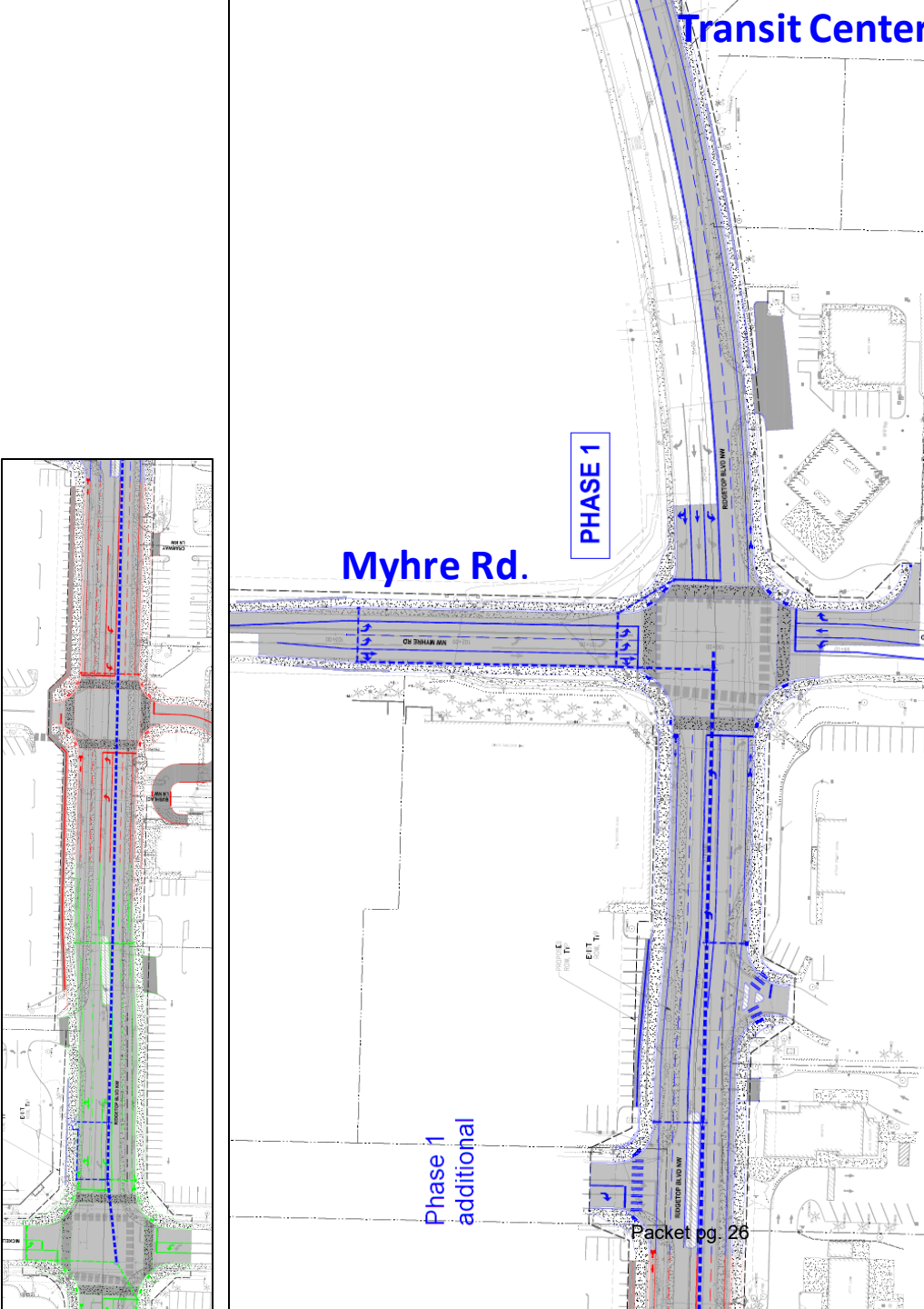
Phase	Funding
PE (underway)	Secured \$2,500,000
ROW (Phase 1+)	Secured \$5,834,000

Ridgetop – Mickelberry to Myhre Construction Phase 1

- Construct Ridgetop & Myhre Intersection
 - Widen, sidewalks, bike lanes, lighting, ITS
- 2nd eastbound lane and bike lane to Sid Uhinck Dr.
- Stormwater main Myhre Rd. to Mickelberry Rd.
- Independent utility

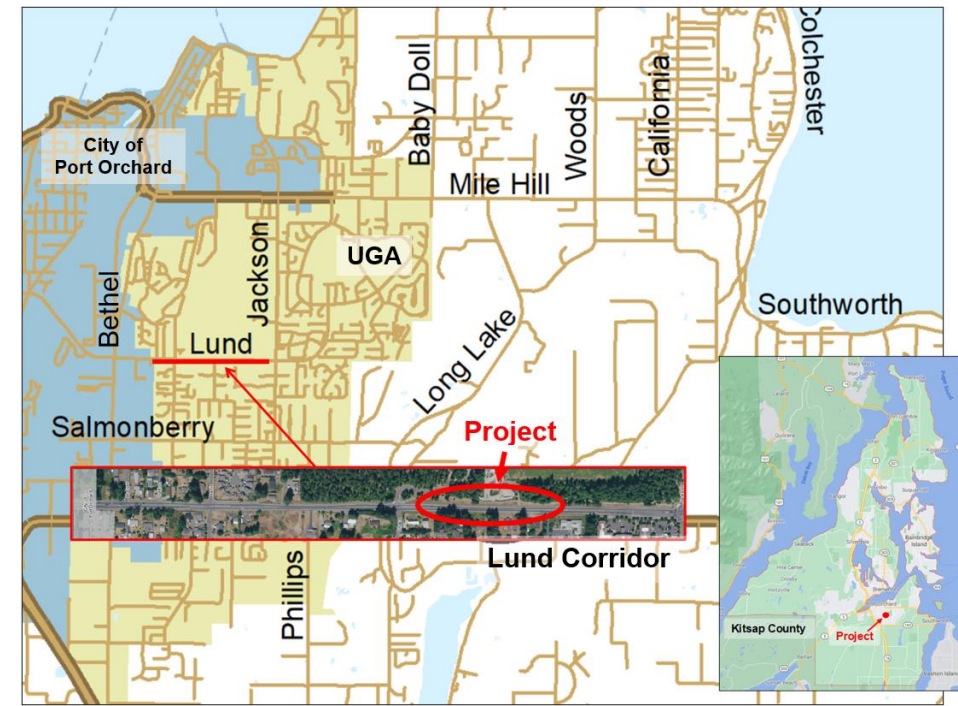
Categories: General, NM

Phase	Funding
Con Phase 1	STP \$5,400,000
2027	Local \$2,400,000
	Total \$7,800,000



Lund Corridor

- Port Orchard UGA, 15,370 population
 - +23% growth by 2044
 - E-W Corridor to Port Orchard, impacting neighborhoods
- #1 pedestrian priority in South Kitsap (NMC)
- #1 priority project South Kitsap TIS (SK-TIS)



Lund – Chase to Jackson 1

- Walk, bike, & transit access to
 - Commercial centers
 - Regional Park
 - Schools
- County/City plans



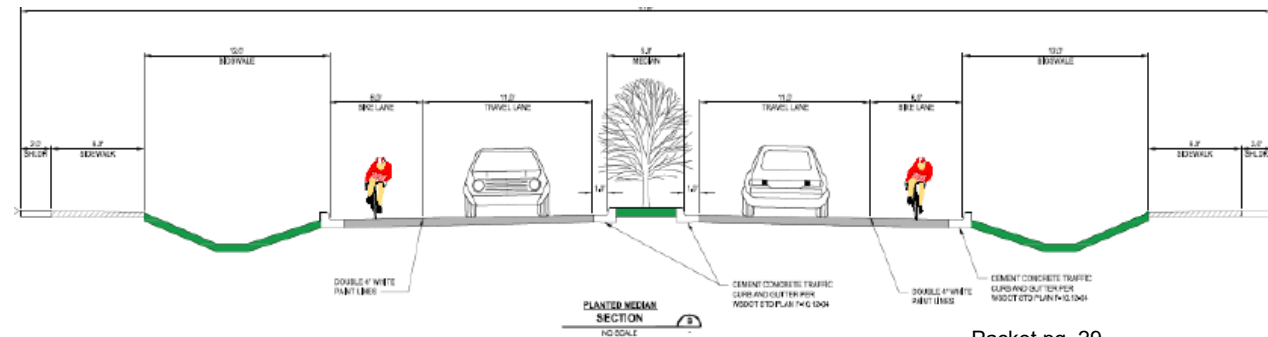
Lund – Chase to Jackson 1

- Construct sidewalks, bike lanes, buffer/stormwater, access mgt., and illumination



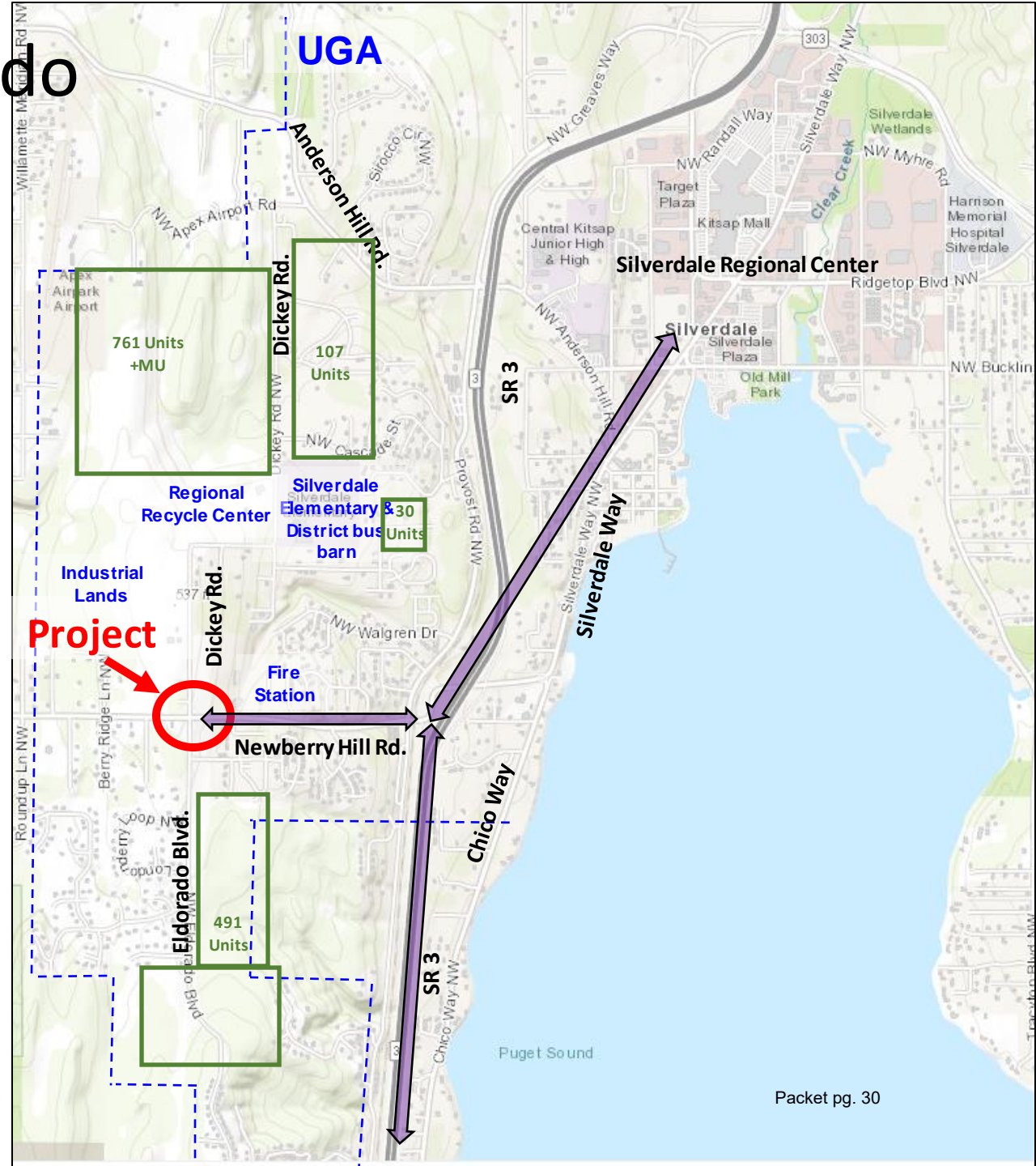
Category: General, NM

Phase	Funding
Construction 2028	STP \$3,761,392 Local \$612,309



Newberry Hill & Dickey/Eldorado

- Silverdale UGA, Population 20,783
 - 54% growth by 2044, will be 3rd largest urban area in Kitsap
- Silverdale Regional Center – multiple corridor approaches
- School & bus barn, Regional Recycling center, industrial, fire station
- >1,389 new housing units + mixed commercial



Newberry Hill & Dickey/Eldorado



- #3 on County Intersection LOS list
- Non-motorized Routes



- Topographic – sight distance challenges

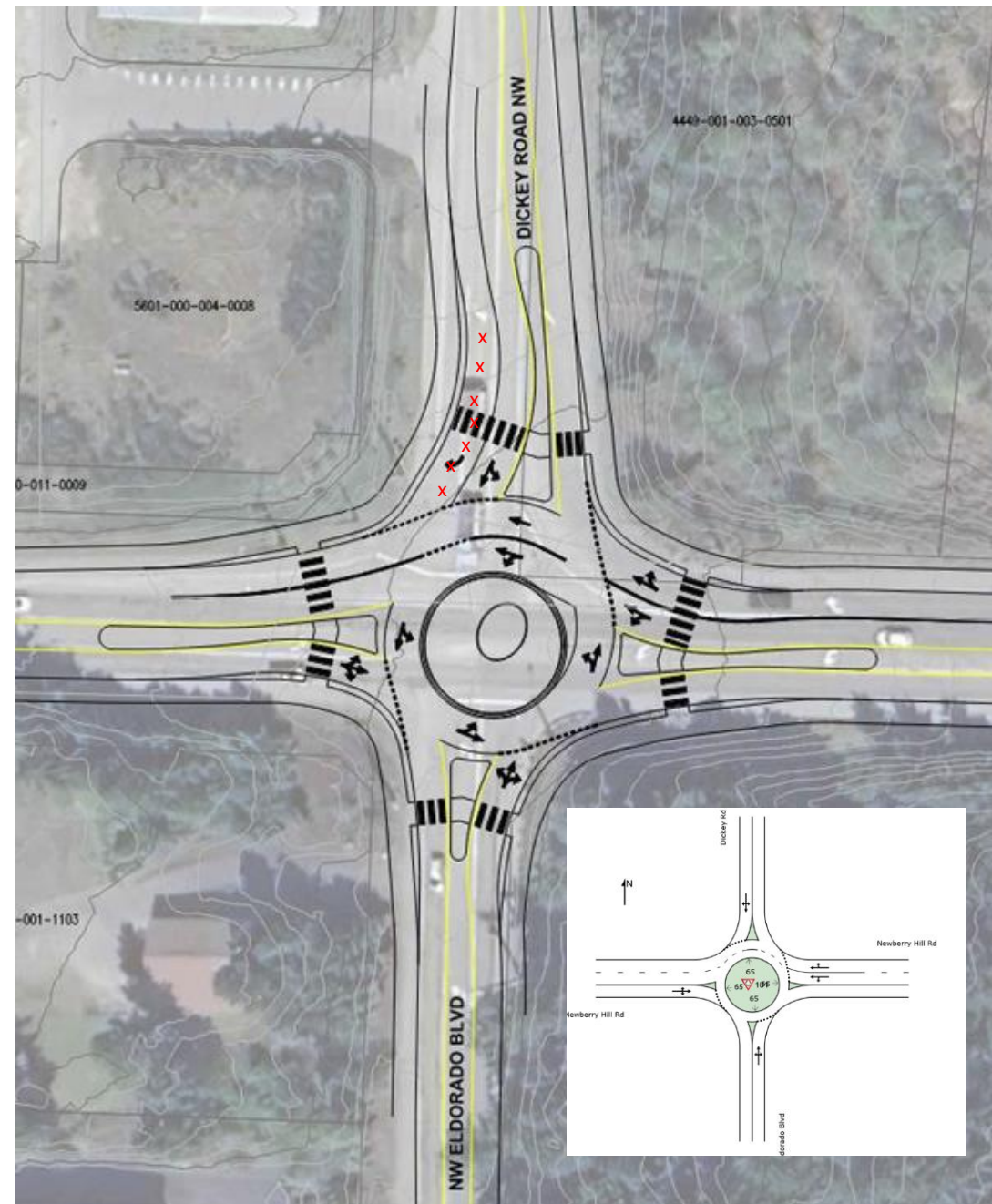


Newberry Hill & Dickey/Eldorado

- Construct Roundabout w/ sidewalk and bike facilities.
 - Two lane eastbound to continue climbing lane through intersection.

Category: General, NM

Phase	Funding
Construction	STP \$2,566,240
2028	Local \$417,760



Preservation – Lake Flora

- Pavement overlay
 - 2.6 miles
 - 52/100 pavement rating
- Puget Sound Industrial Center
Bremerton (MIC)



Category: Preservation, Rural

Phase	Funding	
Construction	STP	\$997,000
2027	Local	\$155,601

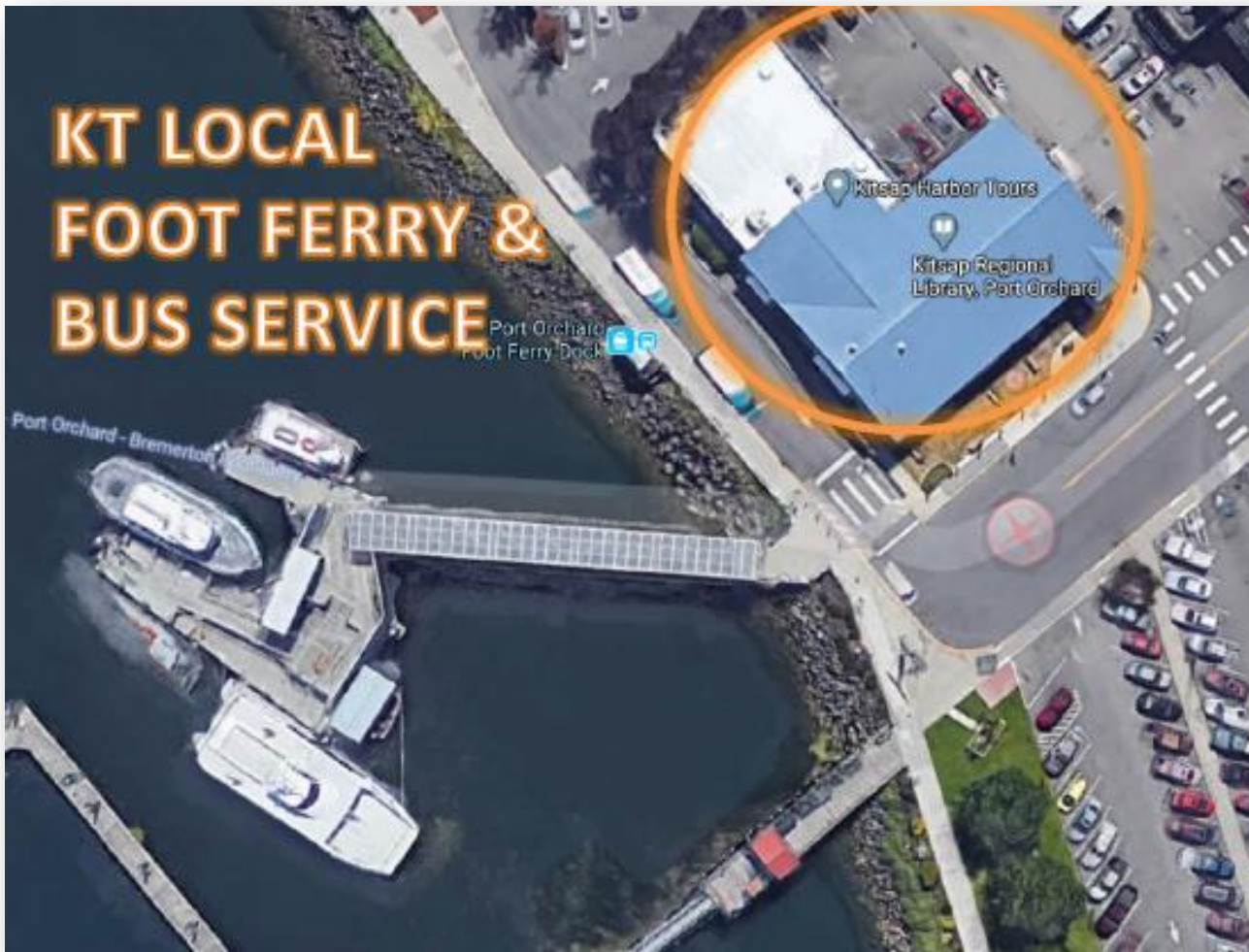




Kitsap Transit



Port Orchard Transit Center



Port Orchard Transit Center – Project Info

Project Phase: Preliminary Engineering

Project Background:

Current Challenges:

- Traffic congestion during peak hours
- Safety Hazards between passengers, buses and single occupancy vehicles
- Extremely limited space at Port Orchard Library



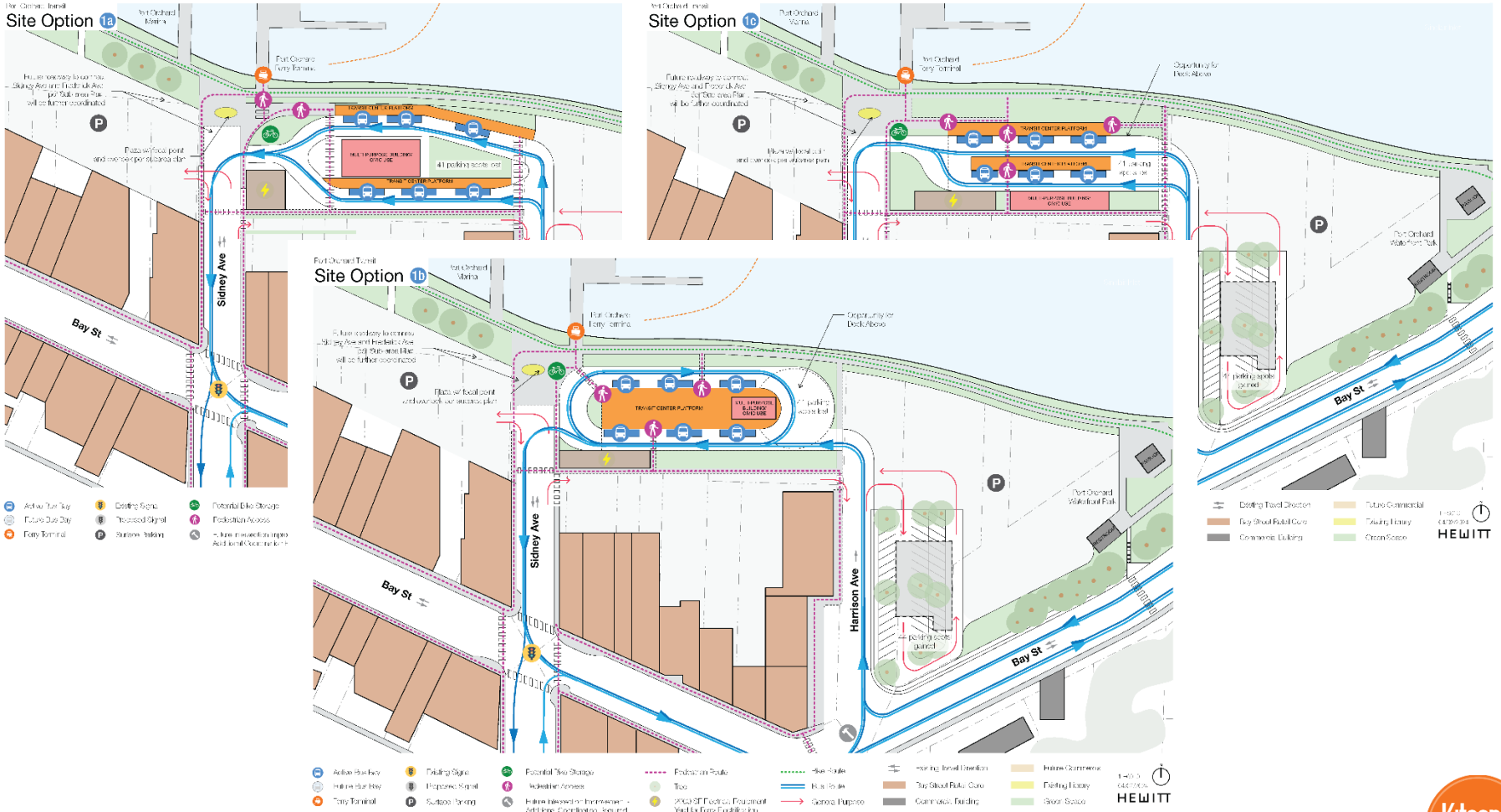
Port Orchard Transit Center – Project Description

Project Description:

- Enhanced Transit Center includes:
 - Approx. six bus bays
 - Public restrooms
 - Bike lanes & crosswalks
 - Bicycle storage unit
 - Security lights & cameras
- Ferry Electrification Infrastructure
- Proximity to KT's ferry services



Port Orchard Transit Center – Site Concepts

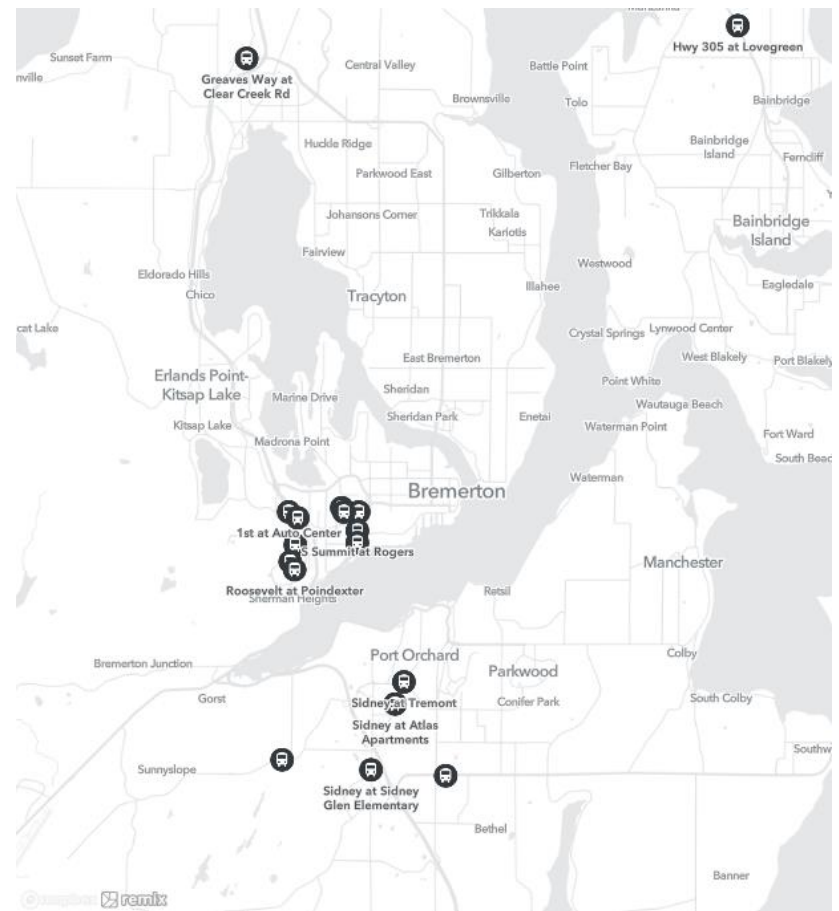
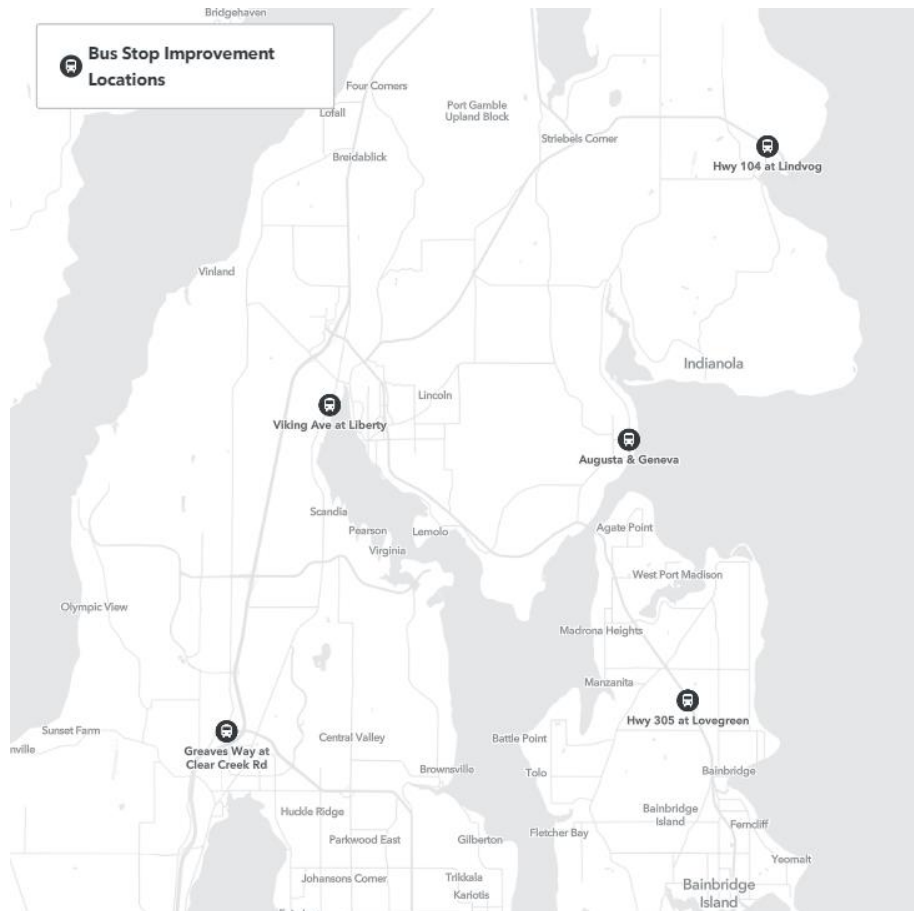


Port Orchard Transit Center – Costs and Funding Sources

Total Project Cost - PE		\$1,920,000
Funding Source	Secured/Unsecured	Amount
STBG	Unsecured	\$1,600,000
Local	Secured	\$320,000
PE Total		\$1,920,000

Project Schedule		
Phase	Start	Complete
<i>Planning (Completed)</i>	2023	2024
PE	2027	2028

Kitsap Transit Bus Stop Upgrades



Kitsap Transit Bus Stop Upgrades – Project Info

Project Phase: Construction

Project Background:

- Many of KT's stops are not ADA compliant
- Geographic challenges due to natural grading
- Focus on areas with higher poverty concentrations & transit access barriers



Kitsap Transit Bus Stop Upgrades – Project Description

Project Description:

- Improve approx. 20 bus stops to ADA standards
- Improved stops include:
 - Concrete pad for level boarding and debarkation
 - Install new shelters and amenities
 - Construct safety improvements



Kitsap Transit Bus Stop Upgrades – Costs and Funding Sources

Total Project Cost - Construction		\$600,000
Funding Source	Secured/Unsecured	Amount
STBG	Unsecured	\$500,000
Local	Secured	\$100,000
Construction Total		\$600,000

Project Schedule		
Phase	Start	Complete
Construction	2027	2029

Bremerton Transportation Center Security Upgrades



BTC Security Upgrades – Project Description

Project Phase: Construction

Project Background:

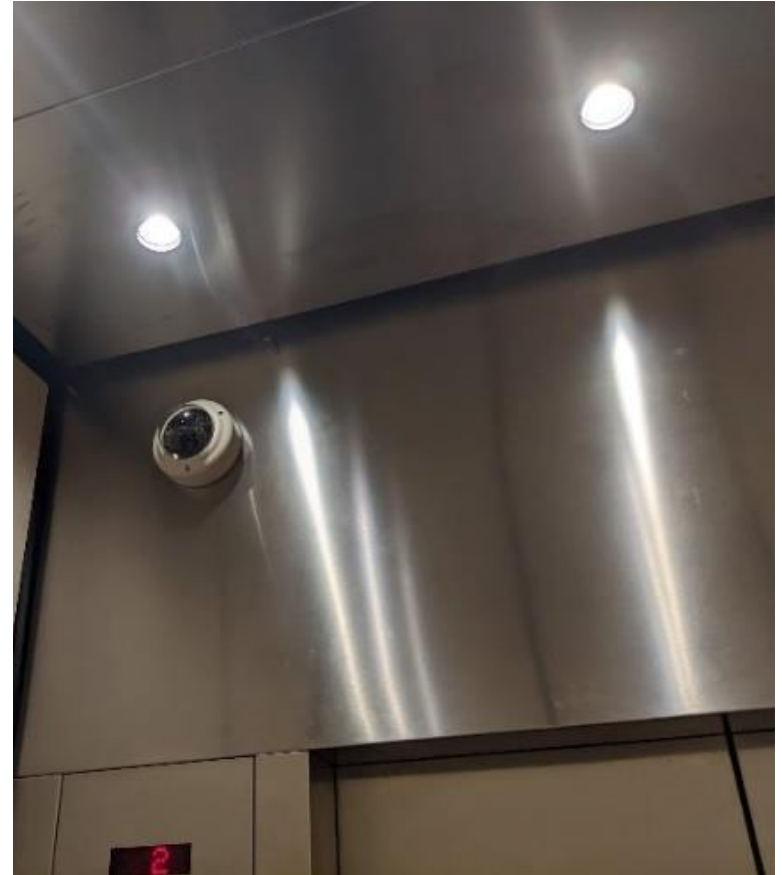
- KT conducted 2023 study of BTC safety & security equipment
- Project Objectives:
 - Improve visibility in passenger waiting areas
 - Improve security for passengers and employees
 - Enhance lighting in dark areas & parking garage



BTC Security Upgrades – Project Description

Project Description:

- Upgrade & replace security cameras
- Improve lighting in parking & waiting areas
- Add pedestrian safety signage
- Project areas:
 - KT's transit deck, local & fast ferry docks
 - WSF pedestrian pathways
 - Parking and waiting areas



BTC Security Upgrades – Costs and Funding Sources

Total Project Cost - Construction		\$660,000
Funding Source	Secured/Unsecured	Amount
STBG	Unsecured	\$550,000
Local	Secured	\$110,000
Construction Total		\$660,000

Project Schedule		
Phase	Start	Complete
Construction	2027	2028



Questions?

Contact: Steffani Lillie
SteffaniL@KitsapTransit.com
360-478-6931

Airport Way Phase 2.2

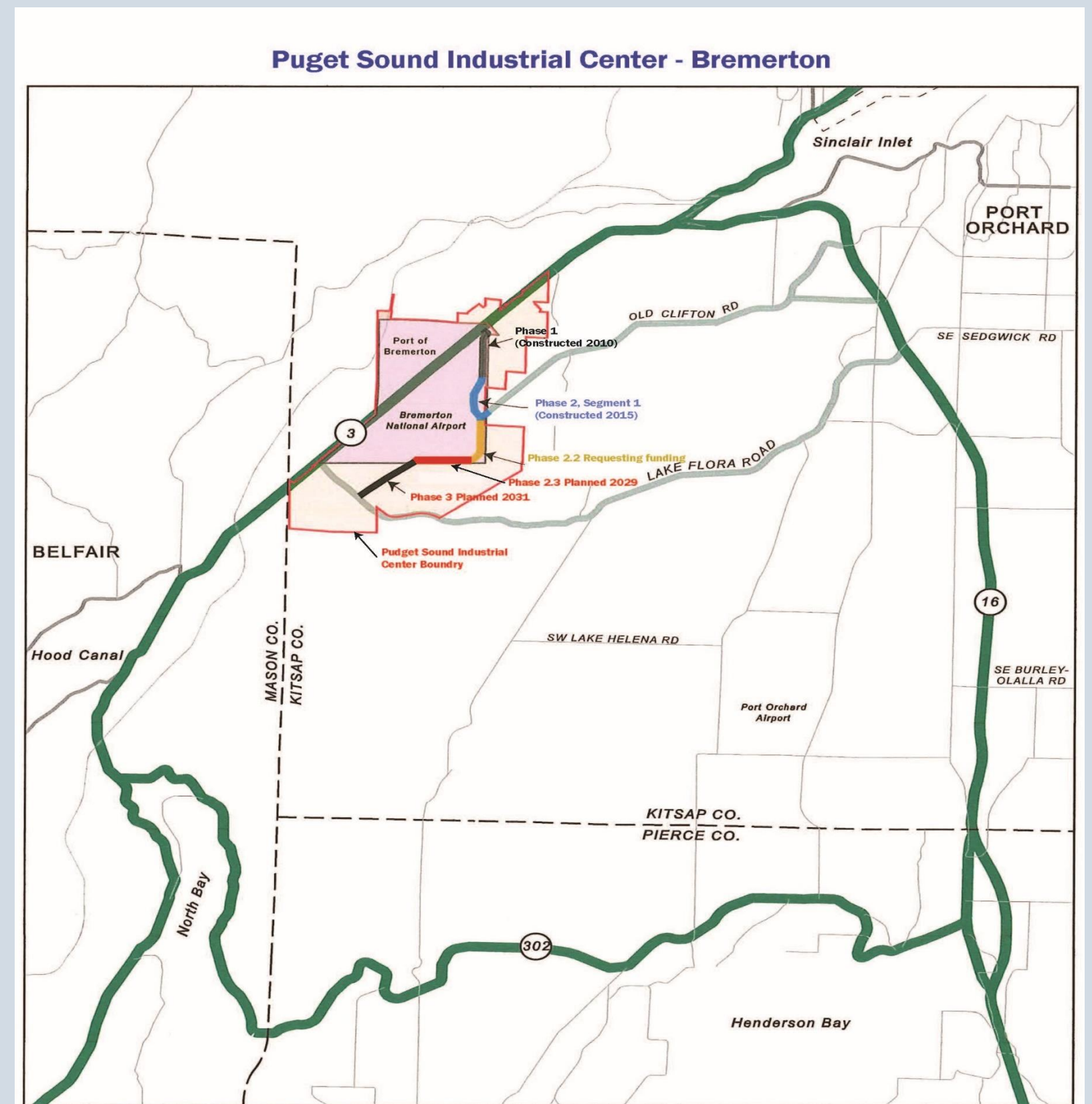


Figure 1: Regional Transportation Network

Airport Way provides links to the regional transportation network for the movement of freight and employees to and from the Airport Way MIC. It also allows vehicles to bypass SR3, a high accident, congested corridor.

AIRPORT WAY (FORMERLY CROSS-SKIA) PHASE 2-2 OVERVIEW

PROGRESS TO DATE

Puget Sound Industrial Center - Bremerton (PSICB) is designated a regional manufacturing industrial center (MIC) and will support up to 10,000 jobs at full build-out in the next 20 years. Airport Way will access portions of the 3,700-acre PSICB as well as make a regional transportation network from SR-3 to Old Clifton Road, Lake Flora Road, and the SR3 Freight Corridor. The project has three remaining phases. To date, the following work has been completed.

PHASE 1 | Completed: 2010
Improvements: ~5,150 feet of roadway to provide access to 160 acres of developable land.

Roundabout constructed at Airport Way/Bree Drive.



PHASE 2.1 | Completed: 2015

Improvements: ~2,900 feet of roadway to provide access to 200 acres of developable land and make a regional transportation connection to Old Clifton Road.

PSICB GROWTH

New development and employment has grown within PSICB since Airport Industrial Way was started. Phase 2.2 improvements will provide access to 340 additional acres and opportunities for growth within PSICB.

2016
987 employees

2019
2,462 employees

2020 Additions
1. Amazon facility opened in September 2020 adding 117 new jobs.
see map for locations

Port Building Completed 2019

SkyPark Development

SR3 Frontage Completed 2021

PHASE 1 - Airport Way / Bree Road Roundabout

Amazon Site Completed 2020 adding 117 new jobs.

PHASE 1 completed 2010

PHASE 2.1 completed 2015

PHASE 2.1 - Airport Industrial Way / Old Clifton Road Roundabout

PHASE 2.2 Planned 2027

South Hangar Development Completed 2022

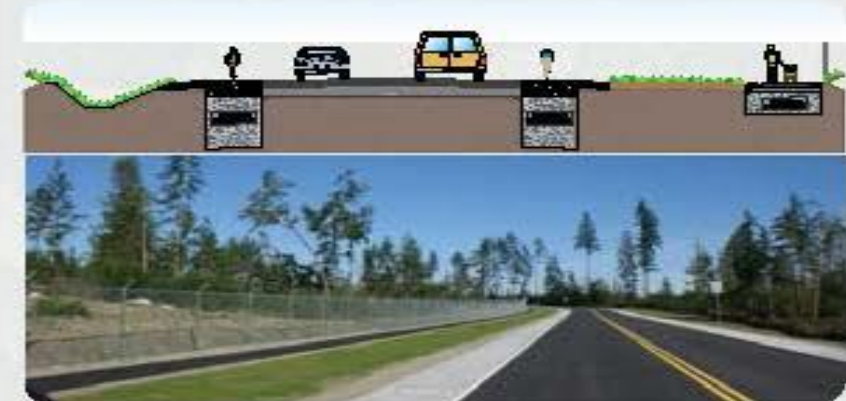
PHASE 2.3 Planned 2029

PHASE 3 Planned 2031

PHASE 3 - To Lake Flora Rd and SR3 Freight Corridor

FUTURE WORK

PHASE 2.2 | Planned Start: 2027
Planned Improvements: ~3,800 feet of roadway to provide connection to Port and adjacent, privately owned PSICB lands.



Proposed cross section with 12-foot travel lanes, pervious concrete bicycle lanes, an open drainage system, and separated 5-foot pervious asphalt pedestrian pathway

FUNDING

PHASE 2.2 | Preliminary Engineering/Design Completed
\$298,483 (secured)

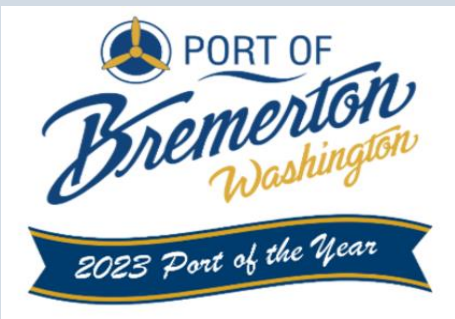
PHASE 2.2 | Construction
\$3,196,084 (unsecured funding request)
\$498,811 (reasonably expected/ Port general budget)

WORK TO DATE

1. 90% civil design complete
2. Environmental permitting complete

Pervious concrete shoulders allow stormwater to penetrate and decrease the need for detention





Civil design complete

Two 12 foot paved vehicle lanes

5 foot pervious concrete bicycle Lane to allow stormwater to penetrate

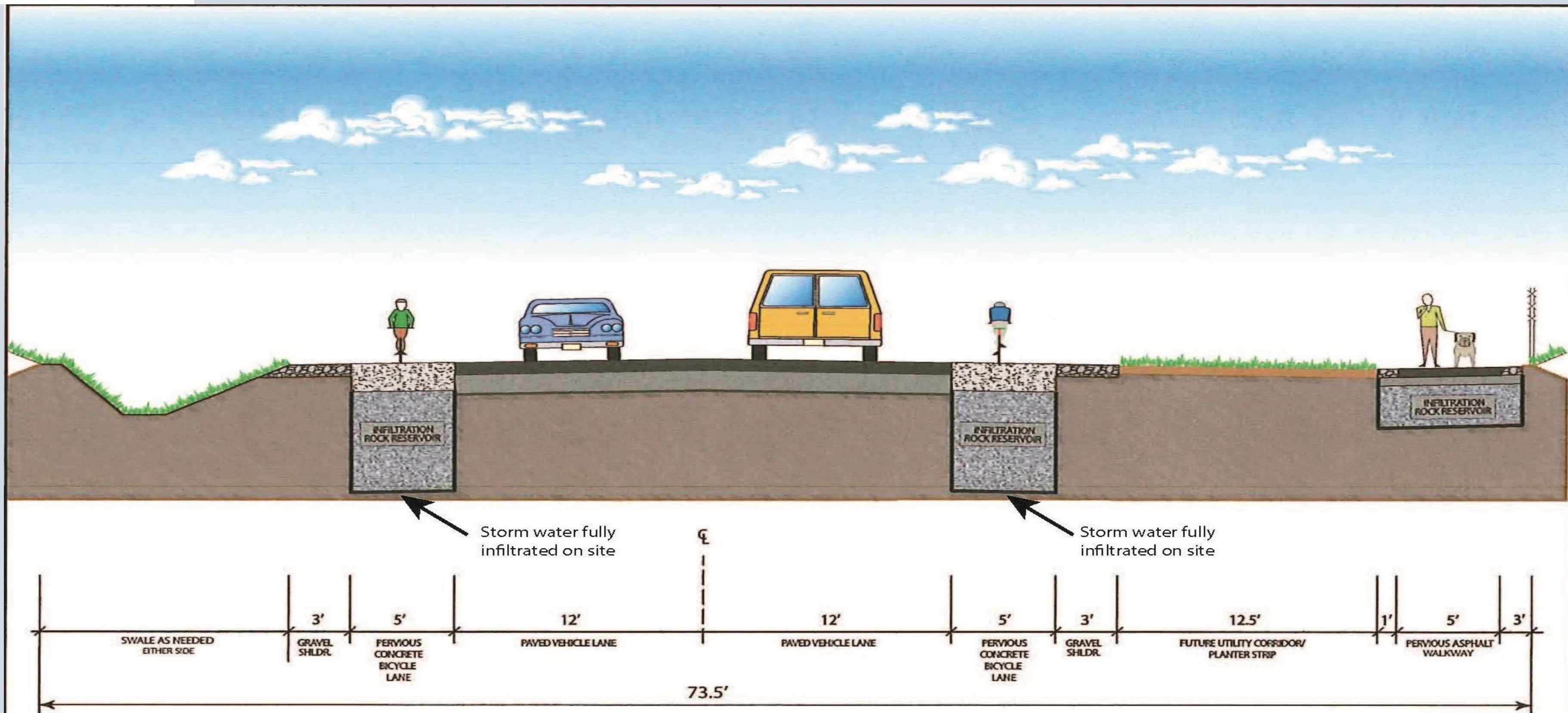
3 foot gravel shoulders

5 foot pervious asphalt walkway

Opens 340 acres of developable lands and opportunities for growth

Completed Airport Way will connect to Lake Flora and SR3 Freight Corridor

Connects Port and privately owned land in Puget Sound Industrial Center-Bremerton



Cross-section used in Phase 1 of the Airport Way and proposed for Phase 2 and Phase 3.



Funding:

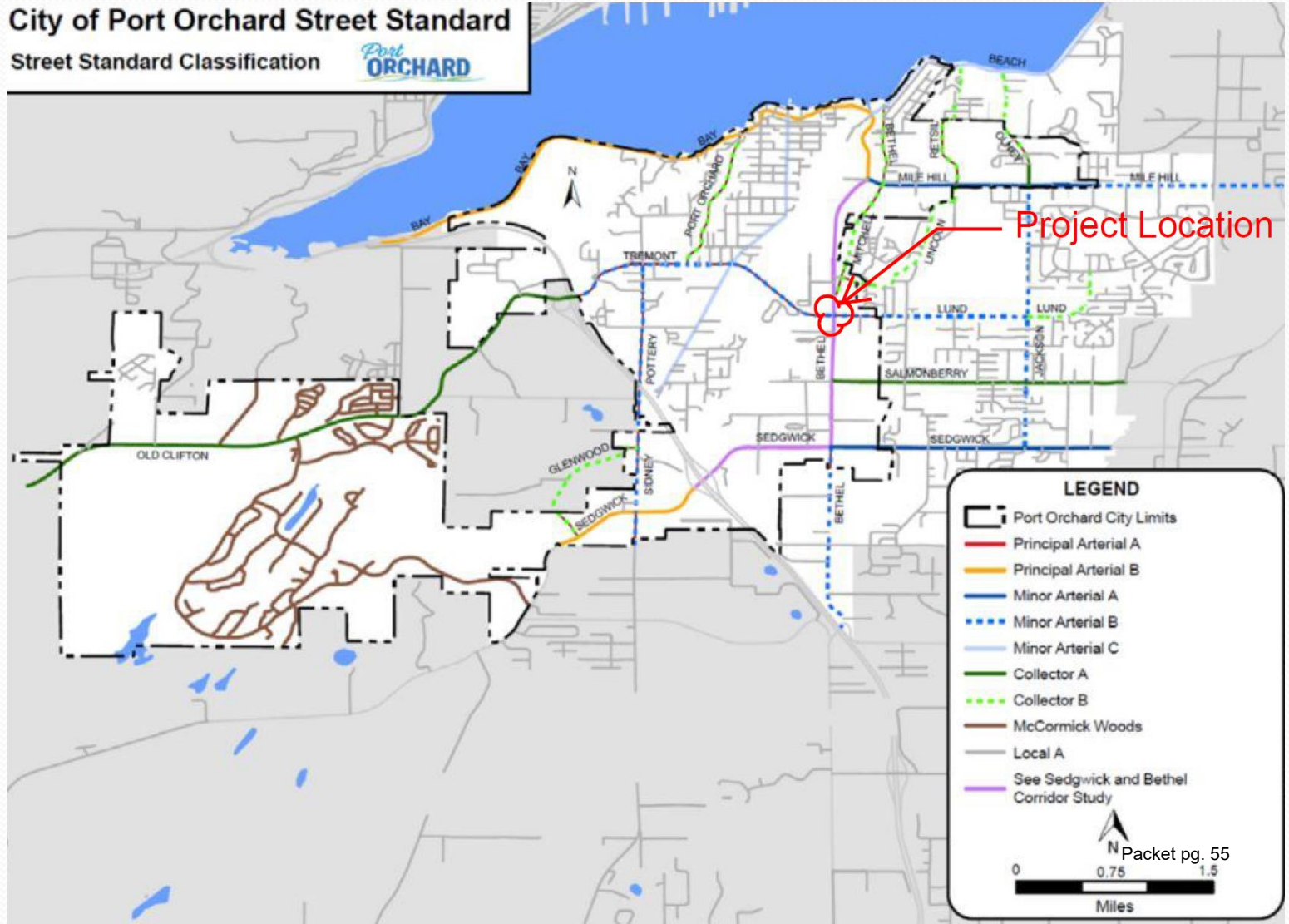
- Engineering:
 - Port of Bremerton Capital 2019 & 2024 (Secured) \$324,623
- Construction Project Costs: \$3,694,895
 - Port Capital Budget 2027 (Reasonably Expected) \$498,811
 - Unsecured Funding Request \$3,196,084

City of Port Orchard KRCC/ Countywide Presentation

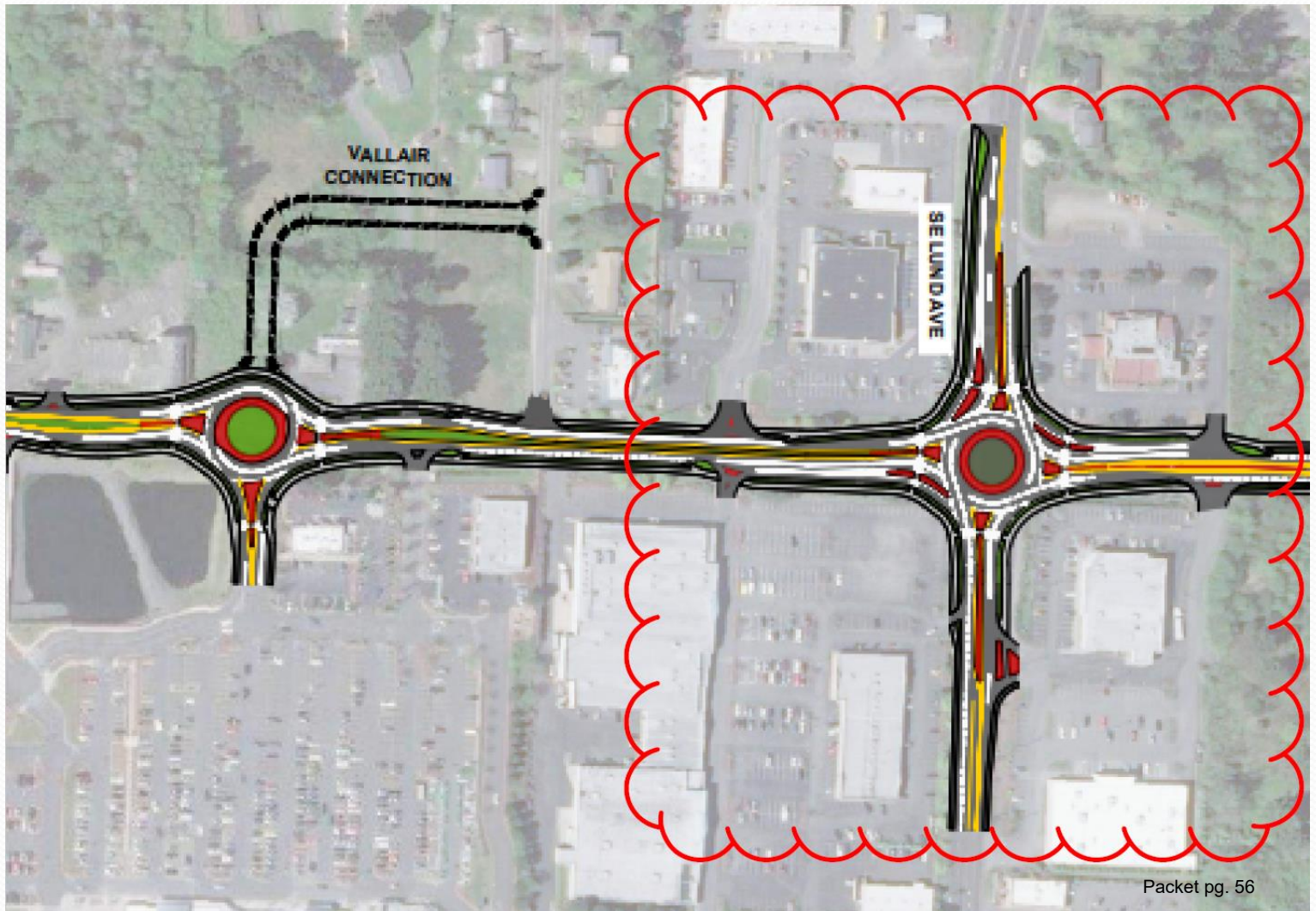


Presented by Chris Hammer, PE, PMP
City Engineer
April, 2024

City Roadway Network

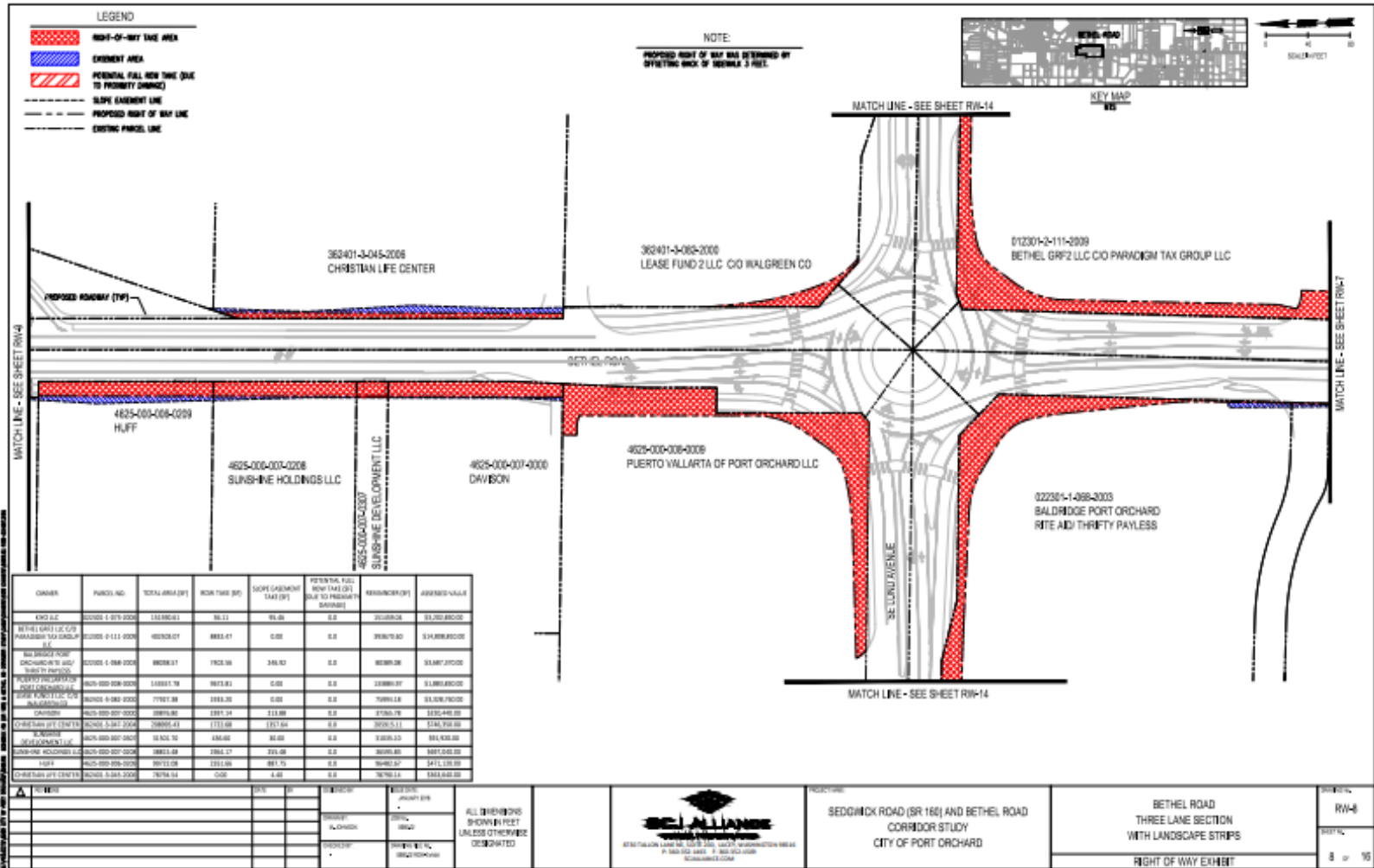


Bethel Lund Intersection Impr.



Packet pg. 56

Bethel Lund Intersection ROW.



Bethel Lund Intersection Impr.

Costs:

PE	\$500,000
ROW	\$1,000,000
CN	\$3,000,000
Total	\$4,500,000

Schedule:

- 2027 DN
- 2029 ROW
- 2031 CN

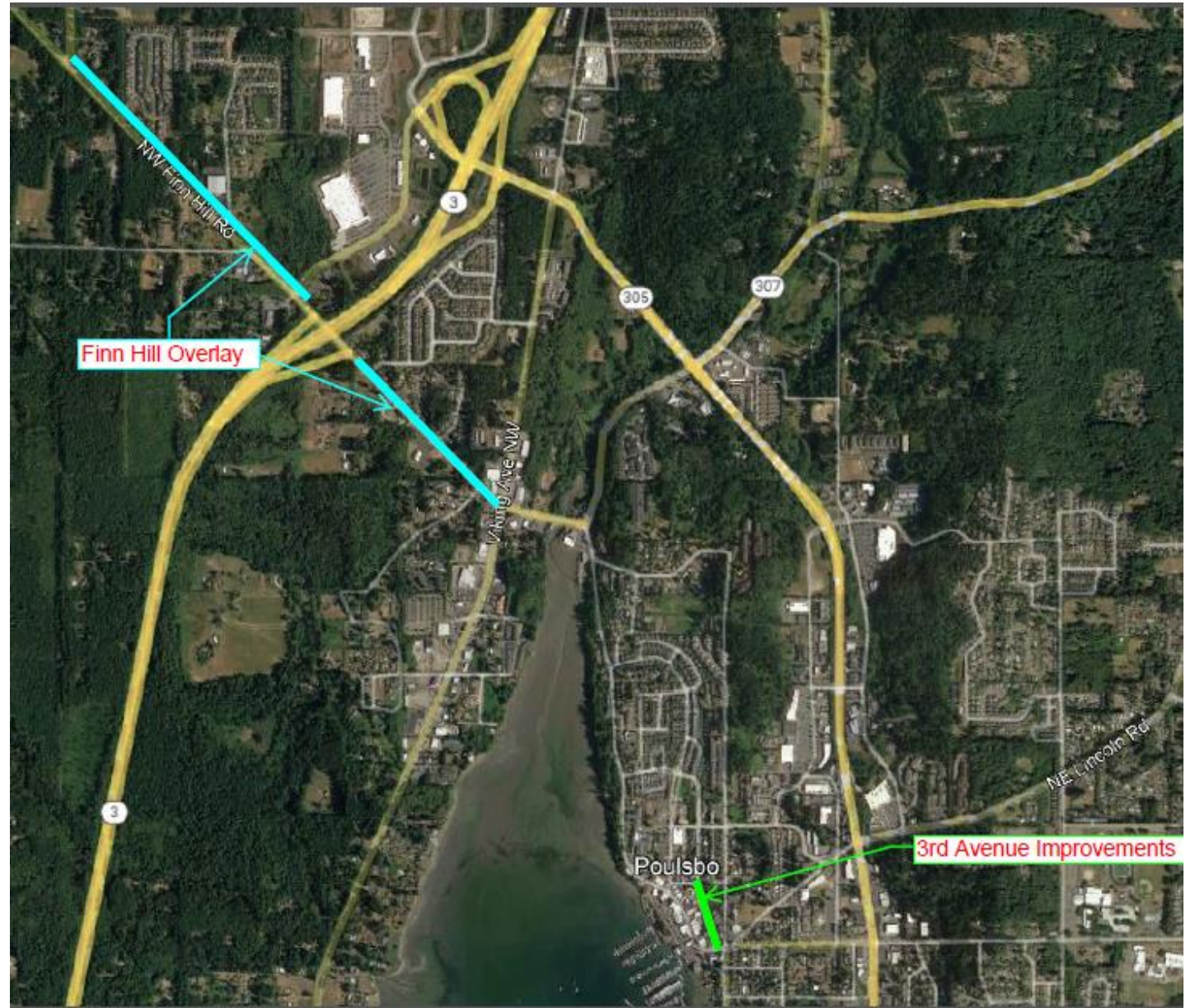
Ask:

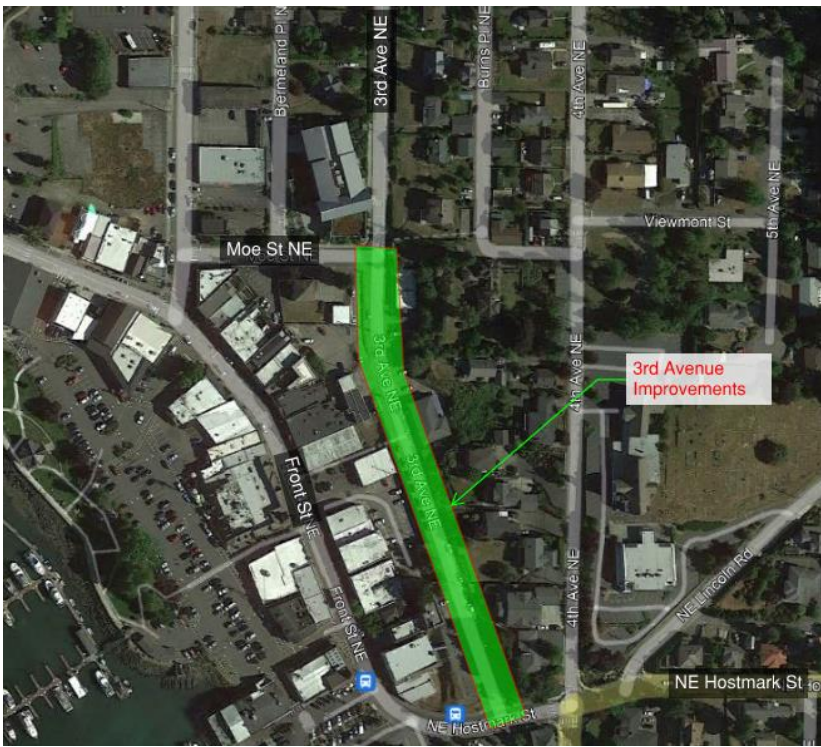
Grant (DN)	\$432,500
City Match	\$67,500

POULSBO – Priority Projects

Countywide - 2024

PROJECTS OVERVIEW

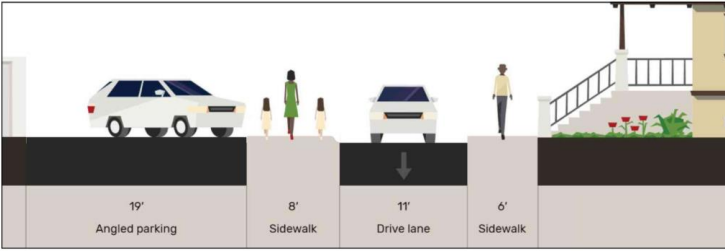
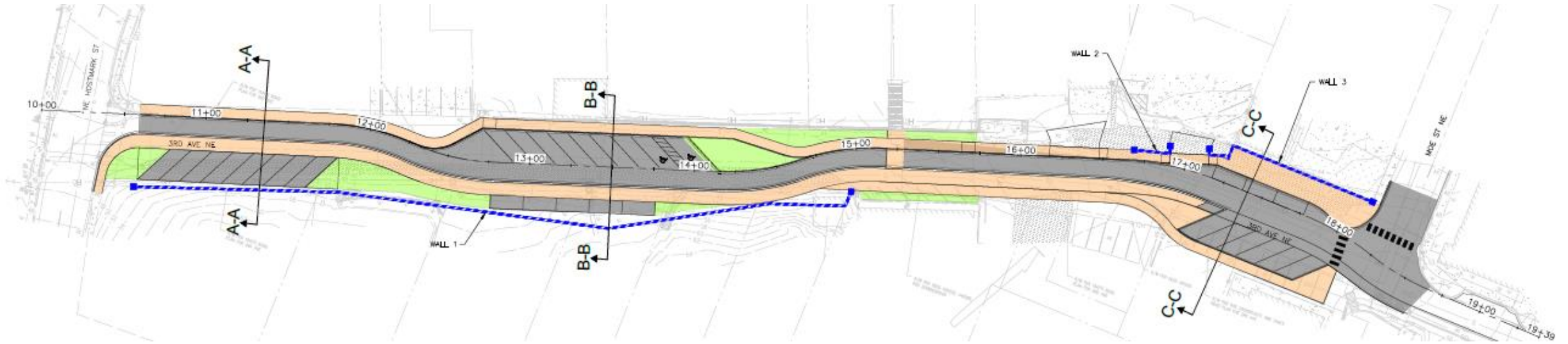




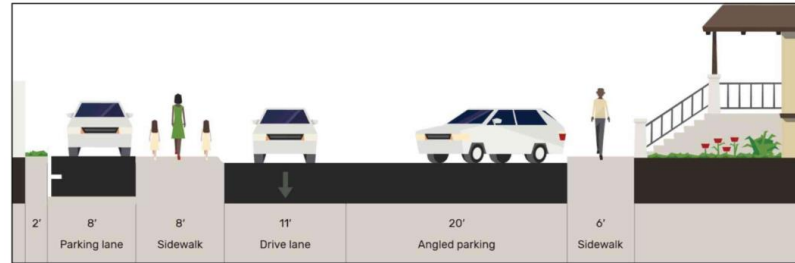
- Currently no bike/ped facilities
- Currently unmanaged parking
- Currently no stormwater treatment
- Failing Pavement
- Supports local centers
- Multimodal
- Completes a bike/ped gap
- Supports commercial development
- Improves safety
- No Right of Way anticipated



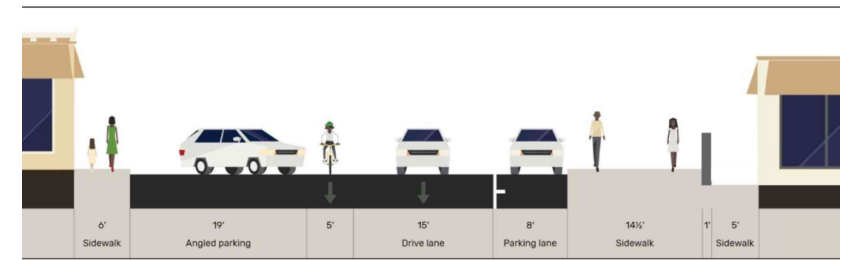
3RD AVENUE IMPROVEMENTS PROJECT



SECTION A-A



SECTION B-B

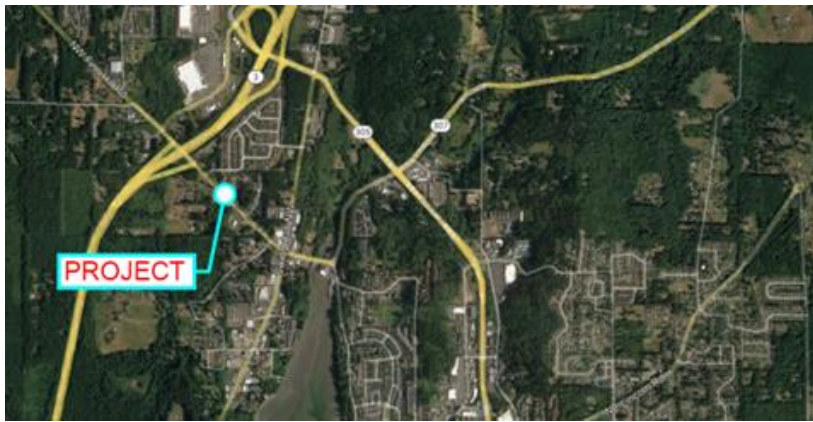


SECTION C-C

3rd Avenue Improvements

Costs:

- PE (2023/2024)
 - \$ 600,000 Local Funds (Secured)
- Construction (2027)
 - \$322,000 Local Funds (Secured)
 - \$2,062,000 Federal Funds
- TOTAL = \$2,984,000**



FINN HILL OVERLAY



- High Volume
- Connection to local centers
- Connection to SR3
- Scalable
- School connection
- Kitsap Transit route
- Failing pavement

Costs:

PE (2024)

\$15,000 Local Funds (Secured)

\$95,000 Federal Funds

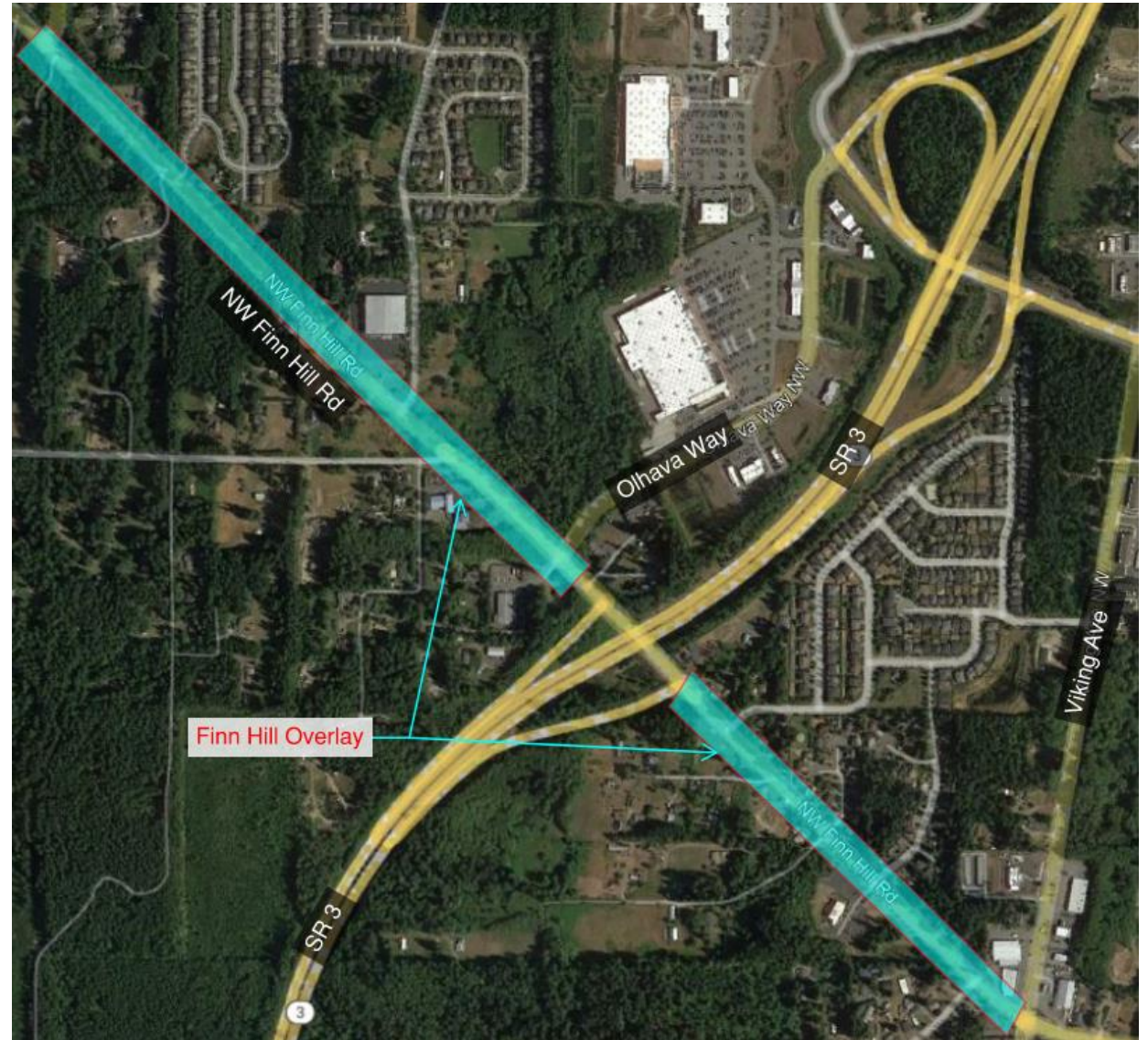
Construction (2027)

\$130,000 Local Funds (Secured)

\$830,000 Federal Funds

TOTAL = \$1,070,000

Finn Hill Overlay





**PUGET SOUND REGIONAL COUNCIL (PSRC) UPDATES FOR THE
KITSAP REGIONAL COORDINATING COUNCIL (KRCC)**



PSRC BOARDS v.3/21/24

Executive Board

Date of Next Meeting: **March 28, 2024**, • 10:00 AM–12:00 PM

Topics from Meeting: **February 22, 2024** (packet posted [here](#)):

- Consent: Approve minutes of 1/25/24 meeting, Vouchers dated 1/2/24-1/5/24, Approve Contract Authority for Waterfront Place Office Repair & Restoration, Contract Authority for 2024 General Assembly, Adopt Routine Amendment to 2023-26 TIP, Approve Change in Regional Transportation Plan Project Status for Two Projects, Adopt Regional Transportation Plan Limited Call for Project Updates
- Discussion: Regional Transportation Plan Dashboard, Regional Transportation Plan (2026-2050) Development Process, Regional Centers Monitoring Scope of Work
- Information: Save the Date: PSRC General Assembly, May 30, 2024 9:30am-1pm., Vision 2025 Awards nominations, Fund Our Ferries Support Letter

Contact: Sheila Rogers - srogers@psrc.org; **KRCC Members:** Commissioner Garrido, Mayor Erickson, Commissioner Strakeljahn, Mayor Wheeler, Mayor Putaansuu; Alternates: Councilmember Rosapepe, Mayor Deets, Councilmember Chamberlin, Commissioner Bozeman

Transportation Policy Board (TPB)

Date of Next Meeting: **April 11, 2024** • 9:30 – 11:30 AM

Topics from Meeting: **March 14, 2024** (packet posted [here](#)):

- Consent: Approve minutes of 2/8/24 meeting, Routine Amendments to the 2023-2026 TIP, Recommend Authorizing Change in the Regional Transportation Plan for the City of Tacoma Water Ditch Trail Phase 3, Rec of PSRC FTA Funding for King Metro Pier 48 Project, Recs of updates to PSRC’s Project Tasking Policies
- Action: 2024 Project Tracking and Supplemental Funding Action
- Discussion: Project Selection Future Work Items, Climate Work Summary and Future Planning, Regional Transportation Plan (2026-50) Development Process
- Information: Transportation Work Program Progress Tracker, Save the Date PSRC General Assembly May 30, 2024 9:30am – 1pm.

Contact: Casey Moreau - cmoreau@psrc.org **KRCC Members:** Commissioner Rolfes, Mayor Putaansuu, Mayor Wheeler, Councilmember Mills, Councilmember Schneider; Alternates: Commissioner Garrido, Ann Mockler, Commissioner Bozeman, Chairman Forsman, Councilmember Chamberlin

Growth Management Policy Board (GMPB)

Date of Next Meeting: **April 4, 2024** • 10:00 AM – 12:00 PM

Topics from **March 7, 2024** Meeting (packet posted [here](#)):

- Consent: Approve minutes of 2/1/24 GMPB Meeting
- Discussion: Puget Sound Recovery Update, Zoning for Early Childhood Education
- Information: 2024 GMPB Meeting Schedule, Vision 2050 Award Nomination Flyer, 2024 General Assembly Flyer, SSMCP Local Plan Guidance

Contact: Heather Culver– hculver@psrc.org; **KRCC Members and Affiliates:** Commissioner Walters, Councilmember Quitslund, Councilmember Purser, Mayor Wheeler, Alternates: Commissioner Rolfes, Councilmember Jennifer Chamberlin, Councilmember Ashley Mathews, Councilmember Alison O’Sullivan

Economic Development District Board

Date of Next Meeting: **June 5, 2024** • 10:00 AM – 12:00 PM

Topics from **March 6, 2024** Meeting (packet posted [here](#)):

- Consent: Minutes of 11/29/23 meeting, Vouchers from 10/31/23 – 12/4/23
- Action: Election of Economic Development District Board Officers, Ratification of Presidential Appointments, Ratification of Executive Committee
- Discussion: State Legislative Update, Regional Workforce Development Efforts, Greater Seattle Partners
- Information: PSRC Staff Report, Draft Supplemental Biennial Budget and Work Program, 2024 Annual General Assembly, Vision 2050 awards

Contact: Mikayla Svob - msvob@psrc.org **KRCC Members and Affiliates:** Commissioner Garrido, Councilmember Stern, Chairman Forsman, Commissioner Strakeljahn, Mayor Wheeler; Alternates: Councilmember Chamberlin, Councilmember Mills, Commissioner Walters, Commissioner Bozeman

Operations Committee (OC)

Date of Next Meeting: **March 28, 2024** • 9:00 – 9:50 AM

Topics from **February 22, 2024** Meeting (packet posted [here](#)):

- Consent: Approve Minutes of Meeting held 1/25/24, Approve Vouchers 1/2/24-2/5/24
- Action: Approve Contract for Cleaning & Disposal, Approve Contract Authority for 2024 General Assembly
- Information: PSRC Office Space Report, Monthly Budget Report, Contract Status Report, Grant Status Report
- **Contact:** Casey Moreau - cmoreau@psrc.org; **KRCC Members:** Mayor Erickson; Alternate: Councilmember Deets



**PUGET SOUND REGIONAL COUNCIL (PSRC) UPDATES FOR THE
KITSAP REGIONAL COORDINATING COUNCIL (KRCC)**



Puget Sound Regional Council

PSRC COMMITTEES v.3/21/24

<p><u>Regional Staff Committee (RSC)</u> Date of Next Meeting: April 18 , 2024 • 9:30 – 11:30 AM Topics from Mar 21 , 2024 Meeting: (packet posted here): - CANCELLED</p> <p>Contact: Mikayla Svob - msvob@psrc.org KRCC Affiliates: Eric Baker, Nick Bond, Heather Wright, Ed Coviello, Andrea Spencer, Joe Morrison; Alternates: Jeff Rimack, Jennifer Sutton, Garrett Jackson, Patty Chamas.</p>	<p><u>Regional FTA Caucus</u> Date of Next Meeting: TBD • 10:30 AM – 12 PM Topics from January 17, 2024 Meeting: (packet posted here):</p> <ul style="list-style-type: none"> • Action: Approval of meeting summary 12/13/23, FTA Funding Redistribution Requests • Discussion: FTA Project Tracking Policies <p>Contact: Sarah Gutschow - sgutschow@psrc.org KRCC Affiliates: Steffani Lillie; Alternate: Jeff Davidson</p>
<p><u>Bicycle/Pedestrian Advisory Committee (BPAC)</u> Date of Next Meeting: May 14, 2024 • 10:00 AM – 12:00 PM Topics from March 12, 2023 Meeting: (agenda posted here):</p> <ul style="list-style-type: none"> • Action: Approval of Meeting Summary 11/14/23 • Discussion: PSRC Transportation Committee Assessment, WSDOT Active Transportation Programs Design Guide and Calls for Projects, Recommendations and Next Steps for Connecting People to Transit Work Program, Updates on Regional Data • Roundtable: Announcements of P/B Activities <p>Contact: Sarah Gutschow - sgutschow@psrc.org KRCC Affiliates: Chris Dimmitt, David Forte, Chris Wierzbicki; Alternates: Vicki Grover, Anthony Burgess, Melissa Mohr.</p>	<p><u>Regional Project Evaluation Committee</u> Date of Next Meeting: April 26, 2024 • 9:30 – 11:00 AM Topics from Mar 22, 2024 Meeting: (agenda posted here) - CANCELLED</p> <p>Contact: Kelly McGourty - kmcgourty@psrc.org KRCC Affiliates: Diane Lenius, David Forte, Shane Weber, Steffani Lillie, Arne Bakker; Alternates: Joe Rutan, Ned Lever, Chris Dimmitt, James Goodman</p>
<p><u>Transportation Operators Committee (TOC)</u> Date of Next Meeting: March 27, 2024 • 10:00 – 12:00 PM Topics from February 28, 2024 Meeting: (packet posted here):</p> <ul style="list-style-type: none"> • Action: Approval of 1/24/24 meeting summary, Updates to PSRC Project Tracking Policies, • Discussion: PSRC Transportation Committee Assessment, Guidance for FTA Equity Formula Funds, Recommendations and Next Steps for Connecting People to Transit Work Program, Transit Agency Roundtable • Information: Vision 2050 Awards <p>Contact: Gil Cerise - gcerise@psrc.org; KRCC Affiliates: Steffani Lillie; Alternate: Ed Coviello</p>	<p><u>Regional Traffic Operations Committee (RTOC)</u> Date of Next Meeting: TBD in 2024 • 9:30 – 11:00 AM Topics from November 2, 2023 Meeting (agenda posted here):</p> <ul style="list-style-type: none"> • Presentation: Regional Safety Plan Draft Scope of Work Outline, Activity Update from FHWA Office of Operations • Discussion: Signal/ITS Inventory Draft Survey Instrument <p>Contact: Gary Simonson - gsimonson@psrc.org KRCC Affiliates: Chris Hammer, Joe Rutan, Vicki Grover, Steffani Lillie; Alternates: Chris Dimmitt</p>

2024 Puget Sound Regional Council (PSRC) and Corridor Committee Appointments for the Kitsap Regional Coordinating Council (KRCC)
v. 3.27.24

Below is a list of 2024 KRCC appointees serving on PSRC Boards. This list also includes KRCC appointees on corridor committees.
Reminder: Always check the KRCC website for the most up to date information. <http://www.kitsapregionalcouncil.org/>

	Jurisdiction	Representative	Alternate(s)
PSRC Boards	Economic Development District Board (EDD)		
	Kitsap County	Charlotte Garrido	Katie Walters
	Kitsap Other Cities**	Ed Stern (Poulsbo)	Shawn Morrissey
	Suquamish Tribe	Leonard Forsman	Luther "Jay" Mills
	Port of Bremerton	Axel Strakeljahn	Cary Bozeman
	Bremerton	Greg Wheeler	Jenifer Chamberlin
	Executive Board		
	Kitsap County	Charlotte Garrido	Katie Walters
	Kitsap Other Cities**	Becky Erickson (Poulsbo)	Joe Deets (Bainbridge Island)
	Port of Bremerton	Axel Strakeljahn	Gary Anderson
	Bremerton	Greg Wheeler	Jennifer Chamberlin
	Port Orchard	Rob Putaansuu	Jay Rosapepe
	Growth Management Policy Board (GMPB)		
	Kitsap County	Katie Walters	Christine Rolfes
	Kitsap Other Cities**	Jon Quitslund (Bainbridge)	Ashley Mathews
	Suquamish Tribe	vacant	Alison O'Sullivan
	Bremerton	Greg Wheeler	Jennifer Chamberlin
	Operations Committee (OC)		
	Kitsap County/Cities*	Mayor Erickson (Poulsbo)	Councilmember Deets (Bainbridge)
	Transportation Policy Board		
	Kitsap County	Christine Rolfes	Charlotte Garrido
	Other Cities**	Leslie Schneider (Bainbridge)	Doug Newell (Poulsbo)
	Kitsap Transit	Rob Putaansuu (Port Orchard)	Anna Mockler
	Ports	(filled)	Cary Bozeman
	Suquamish Tribe	Luther "Jay" Mills	Leonard Forsman
	Bremerton	Greg Wheeler	Jennifer Chamberlin
	Corridor Committees	SR 305	
Kitsap County			Christine Rolfes
Poulsbo			Becky Erickson
Suquamish Tribe			Leonard Forsman
Kitsap Transit			John Clauson
Bainbridge Island			Joe Deets
SR 16			
Kitsap County			Charlotte Garrido
Port Orchard			Rob Putaansuu
Port of Bremerton			Axel Strakeljahn
Kitsap Transit			John Clauson
SR 104			
TBD			TBD

*Selected from PSRC Executive Board meetings who represent Kitsap County and cities

**"Other cities" seats are shared by 3 cities (Bainbridge, Port Orchard, Poulsbo) and rotated among them year to year.

2024 Puget Sound Regional Council (PSRC) Appointments for the Kitsap Regional Coordinating Council (KRCC)
v. 3.27.24

Below is a list of 2024 KRCC appointees serving on PSRC Committees.
Reminder: Always check the KRCC website for the most up to date information. <http://www.kitsapregionalcouncil.org/>

	Jurisdiction	Representative	Alternate(s)
PSRC Committees	Bicycle/Pedestrian Advisory Committee		
	Kitsap County	David Forte	Melissa Mohr
	Bremerton	Nick Ataie	Gunnar Fridriksson
	Other Cities**	Chris Wierzbicki (Bainbridge Island)	Anthony Burgess (Poulsbo)
	Regional FTA Caucus		
	Kitsap Transit	Steffani Lillie	Lindsey Cook
	Regional Project Evaluation Committee		
	Kitsap Other Cities**	Diane Lenius (Poulsbo)	vacant
	Kitsap County	David Forte	Joe Rutan
	Port of Bremerton	Arne Bakker	James Goodman
	Bremerton	Shane Weber	Gunnar Fridriksson, Vicki Grover
	Kitsap Transit	Steffani Lillie	Jeff Davidson
	Regional Staff Committee		
	Kitsap County	Eric Baker	Jeff Rimack
	Other Cities**	Nick Bond (Port Orchard)	Patty Charnas (Bainbridge Island)
	At Large	Heather Wright (Poulsbo)	Patty Charnas (Bainbridge Island)
	Transit	Ed Coviello	
	Bremerton	Andrea Spencer	Garrett Jackson
	Economic Development Rep	Joe Morrison (KEDA)	
	Regional Traffic Operations Committee		
	Kitsap Other Cities**	Chris Hammer (Port Orchard)	
	Kitsap County	Joe Rutan	
	Bremerton	Vicki Grover	Gunnar Fridriksson
	Kitsap Transit	Steffani Lillie	
	Regional Transportation Demand Management Committee		
	Kitsap Other Cities** or Kitsap County	Chris Hammer (Port Orchard)	
	Bremerton	Cathy Bonsell	Vicki Grover
	Kitsap Transit	Lindsay Kuiphoff	Steffani Lillie
	Regional TransTAC Chairs Committee		
	KRCC TransTAC	Steffani Lillie (Kitsap Transit)	David Forte (Kitsap County)
Transportation Operators Committee			
Kitsap Transit	Steffani Lillie	Ed Coviello	
Freight Advisory Committee			
Bremerton	Chris Dimmitt	Vicki Grover	
Kitsap County	David Forte	Melissa Mohr	
Port of Bremerton	Arne Bakker	James Goodman	
Regional Intelligent Transportation System Committee			
Bremerton	Vicki Grover	Gunnar Fridriksson	

**"Other cities" seats are shared by 3 cities (Bainbridge, Port Orchard, Poulsbo) and rotated among them year to year.