



AIRPORT INDUSTRIAL WAY (FORMERLY CROSS-SKIA) PHASE 2-2 OVERVIEW

PROGRESS TO DATE

Airport Industrial Way is designated as a regional manufacturing industrial center and will support up to 10,000 jobs at full build-out in the next 20 years. Airport Industrial Way will access the 3,700-acre Puget Sound Industrial Center – Bremerton (PSICB) as well as make a regional transportation network from SR-3 to Old Clifton Road, Lake Flora Road, and the Belfair Freight Corridor. The project is split into five phases. To date, the following work has been completed:

PHASE 1 | Completed: 2010
Improvements: ~5,150 feet of roadway to provide access to 160 acres of developable land

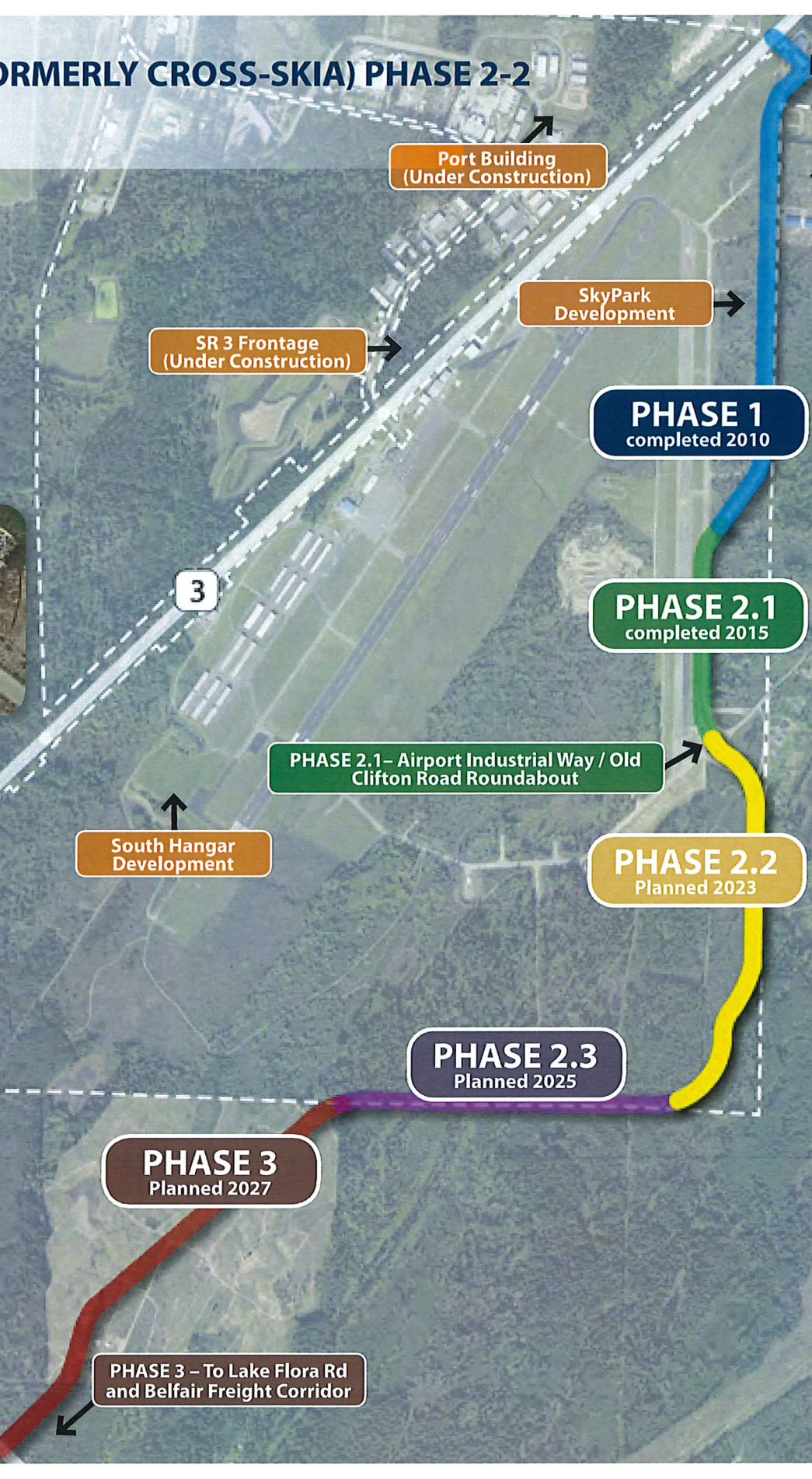
Roundabout constructed at Airport Industrial Way/Bree Drive



PHASE 2.1 | Completed: 2015
Improvements: ~ 2,900 feet of roadway to provide access to 200 acres of developable land and make a regional transportation connection to Old Clifton Road

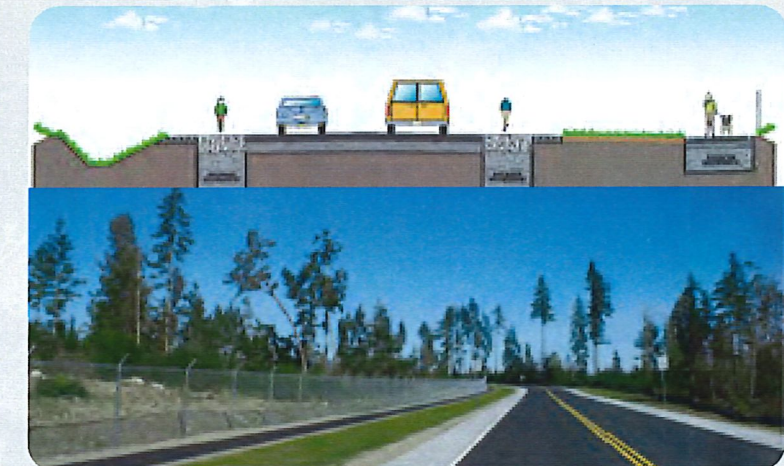
PORT GROWTH

New development and employment has grown within PSICB since Airport Industrial Way was started. Phase 2.2 improvements will provide access to 340 additional acres and opportunities for growth within PSICB.



FUTURE WORK

PHASE 2.2 | Planned Start: 2023
Planned Improvements: ~3,800 feet of roadway to provide connection to Port and adjacent, privately owned PSICB lands



Proposed cross section with 12-foot travel lanes, pervious concrete bicycle lanes, an open drainage system, and separated 5-foot pervious asphalt pedestrian pathway

FUNDING

PHASE 2.2 | Preliminary Engineering/Design
\$298,483 (secured)

PHASE 2.2 | Construction
\$2,942,656 (unsecured funding request)
\$459,259 (reasonably expected/Port general budget)

WORK TO DATE

1. 90% civil design complete
2. Environmental permitting complete

Pervious concrete shoulders allow stormwater to penetrate and decrease the need for detention

