



KEDA's Last 10 Months

KITSAP

ECONOMIC
DEVELOPMENT
ALLIANCE

ONEkitsap

5-Year Strategic Plan



New or enhanced efforts made possible by One Kitsap:



CREATE Capacity

- Analyze our lands, buildings and economic growth potential
- Increase Industrial / Commercial Capacity on Highway 3
- Convene Kitsap Industrial Readiness Summit



INCREASE Workforce

- Add Retiring Navy to Kitsap's workforce
- Inventory Kitsap's Top 10 necessary jobs
- Grow Community Technical Education & Apprenticeships



GROW Business

- Double Site Visits to Local Businesses (50+)
- Support healthcare talent recruitment and training
- Targeted, Data-driven business recruitment



BUILD Community

- Grow Kitsap's Entrepreneurial Ecosystem
- Position Silverdale for urban vibrancy
- Host BIPOC Business Forums



kitsapeda.me/onekitsap

Supporting Entrepreneurship

Welcome, Founders!

2023 MICROBUSINESS COHORT

DARREN O'CONNOR	NthX
EDGAR MARTINEZ	Tax Trust Co.
GREGORY SHOWERS	Back Flow Assembly Solutions
MEGAN CLARKE	Sites on the Sound
MEGAN MARTIN	Indigo Plum Shoes & Apparel
MICHAEL GRIFFIN	Griffin Gallery NW
REAMA SCHULDT	Spread Supplies
SANDRA ROCHA EVANOFF	Brazil Comes to You
SARA SMITH	Dream Maker Creative
TRICIA BENSON	Viking Marine



Funding provided by Washington State Microenterprise Association (WSMA), Washington Department of Commerce, and Kitsap Bank.



www.kitsapeda.org

Local Economic Research and Facilitation



KITSAP | Kitsap County
ECONOMIC DEVELOPMENT ALLIANCE | **2022 TOP EMPLOYERS**

Company/Organization	Sector	Total
Naval Base Kitsap - Civilian	Public	21,612
Naval Base Kitsap - Active Duty	Public	15,293
St. Michael Medical Center/ Franciscan Medical Group	Private	2,477
Central Kitsap School District ¹	Public	1,865
Kitsap County	Public	1,358
South Kitsap School District	Public	1,341
Olympic College	Public	988
North Kitsap School District	Public	885
Bremerton School District	Public	850
Port Madison Enterprises	Private	785
Haselwood Auto Group	Private	681
McDonald's Peninsula	Private	571
Bainbridge Island School District	Public	525
Kitsap Mental Health Services	Private	500
Kitsap Transit	Public	444
The Doctors Clinic	Private	425
City of Bremerton	Public	402
Noo-Kayet Investments (Port Gamble S'Klallam Tribe)	Private	400
YMCA of Pierce and Kitsap Counties	Private	398
Town & Country Markets, Inc.	Private	397
Suquamish Tribe	Public	387
Skookum Contract Services	Private	362
Martha and Mary Health Services	Private	356
Encore Communities	Private	350
Huntington Ingalls Fleet Support Group LLC	Private	350
Kitsap Credit Union	Private	296
Washington State Ferries	Public	257
Jacobs Engineering	Private	256
Goodwill	Public	255
SAFE Boats International LLC	Private	230
Kitsap Bank	Private	212
City of Poulsbo	Public	212
Watson Furniture Group, Inc.	Private	204



Tabulated by Western Washington University
Employment counts as of 12/31/2022
KEDA and WWU not responsible for non-reporting or inaccurate reporting



www.kitsapeda.org

KEDA, Programs and Daily Activities



WASHINGTON
APEX
ACCELERATOR
FORMERLY WASHINGTON PTAC

Government Contracting
Assistance

KITSAP



ECONOMIC
DEVELOPMENT
ALLIANCE

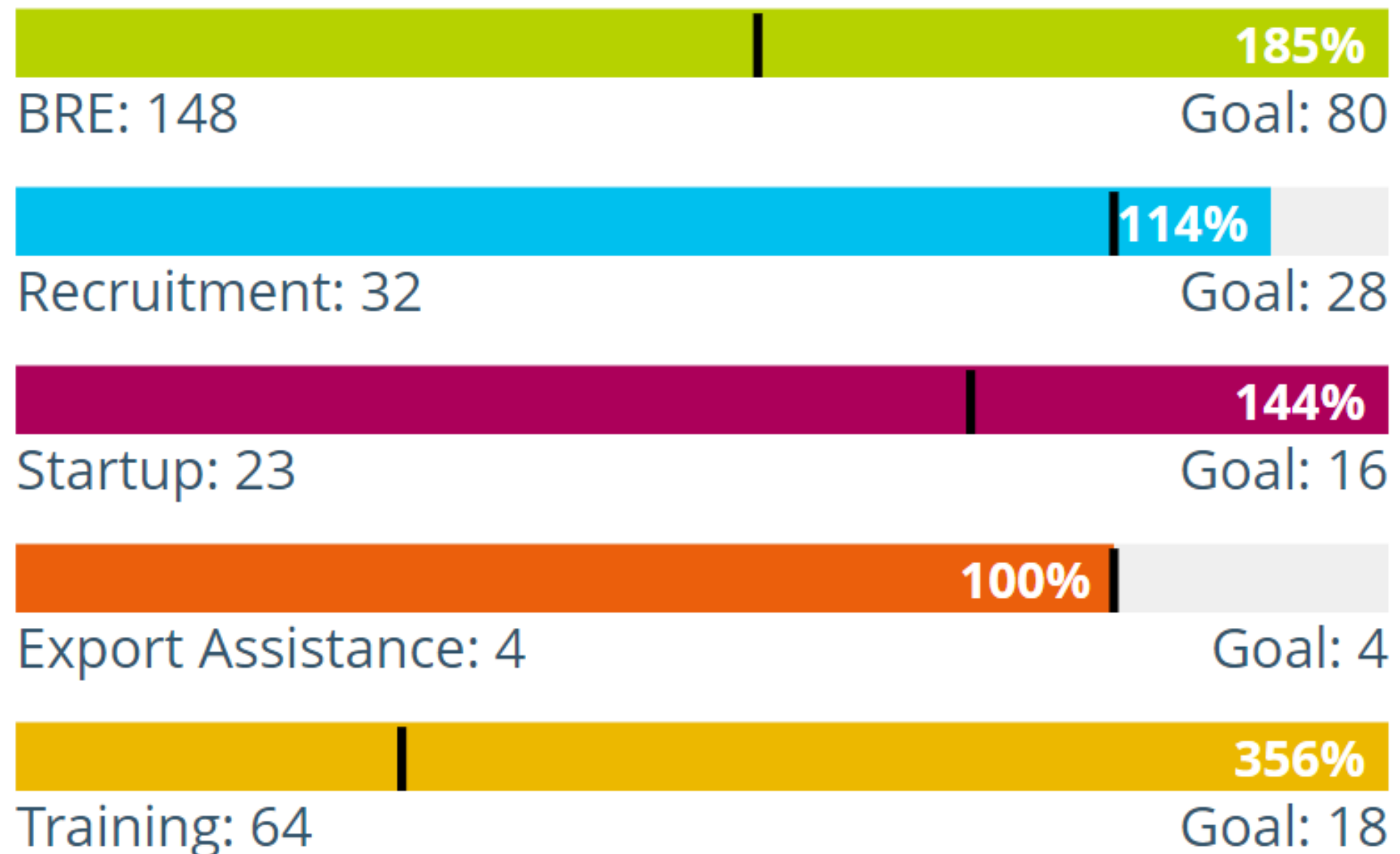
40-Year Economic
Developer of Record



Accelerating the
Maritime Autonomy Industry

Current FY 2022-2023

ADO Commerce Interaction Metrics FY 22-23





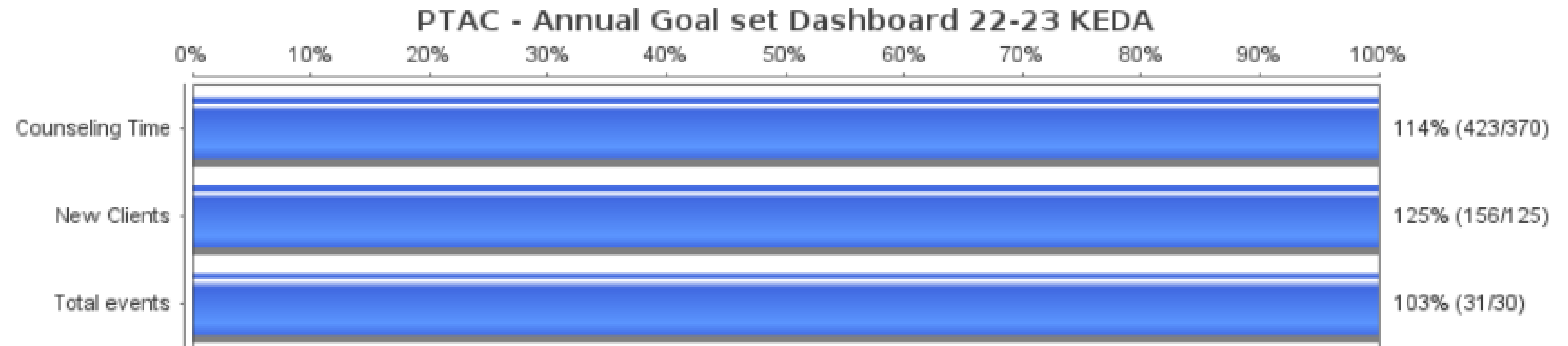
Government Contracting Technical Assistance Goals

2022-2023

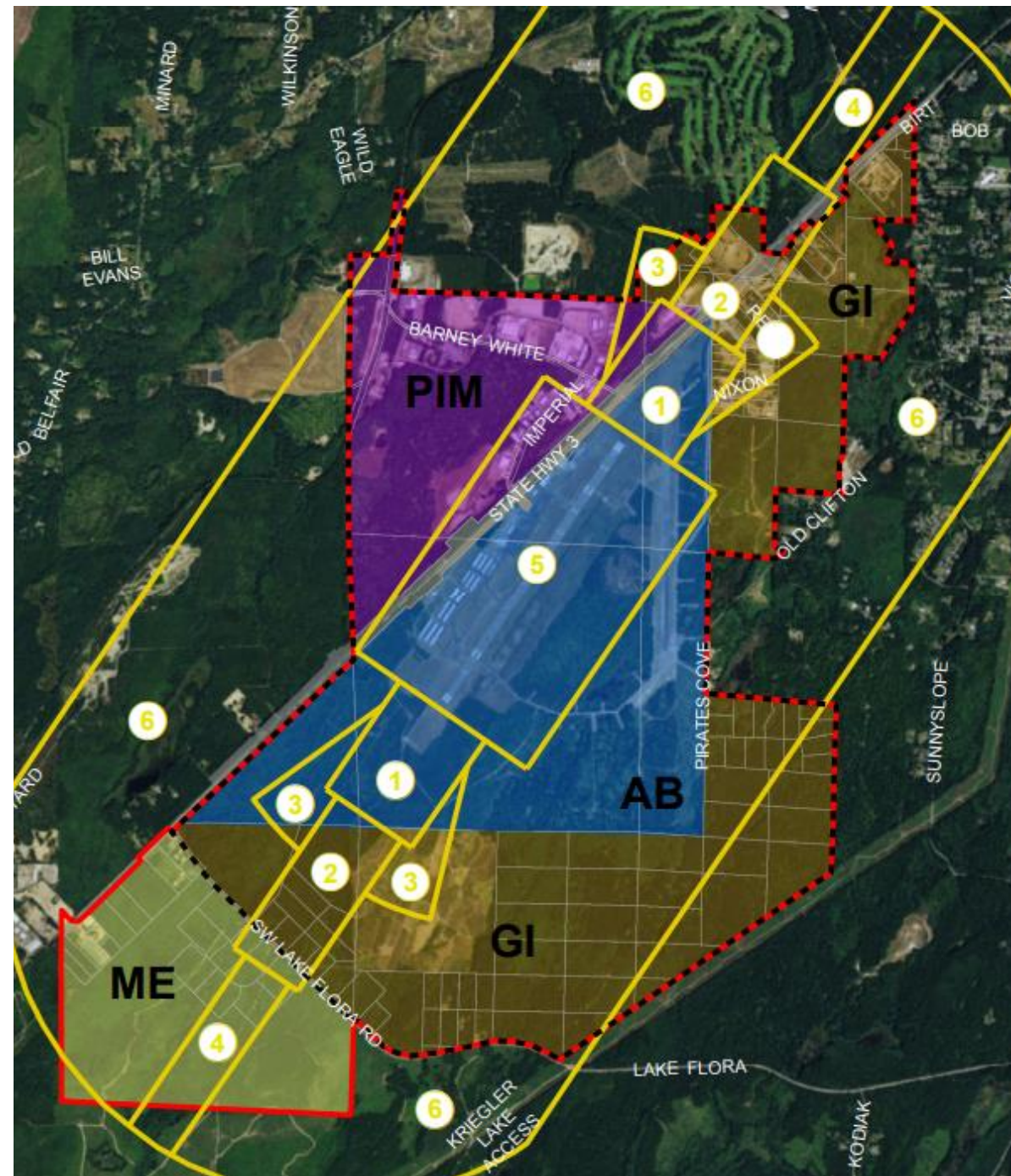
PTAC METRICS - FY 2022-2023 Final

PTAC - Annual Goal set Dashboard 22-23 KEDA

Period: 4/1/2022 to 3/31/2023



Industrial Lands and Buildings - Readiness



KITSAP INDUSTRIAL READINESS SUMMIT

August 2nd | 12:30-3:00pm

Marina Vista Room, Kitsap Conference Center, Bremerton WA



Rep. Derek Kilmer
WA 6th Congressional Dist.



CAPT. John Hale
CO, NAVBASE Kitsap



AGENDA

1:00 pm	Welcome, Goals for the Day <ul style="list-style-type: none"> Erin Leedham, KEDA Board Chair Joe Morrison, KEDA Executive Director
1:05 pm	Rep Derek Kilmer, WA 6th Congressional District <i>Historic Investment of SIOP and Kitsap's Economy</i>
1:15 pm	Captain John Hale, Commanding Officer, Naval Base Kitsap <i>Importance of Naval Base Kitsap</i>
1:25 pm	Dave Sweet, Director of SIOP, PSNS & IMF <ul style="list-style-type: none"> Introduction SIOP PSNS SIOP Project Scope and Expectations
1:40 pm	Captain Brent Paul, NAVFAC Northwest Commanding Officer <i>Overview of Design & Construction Contracting /Subcontracting Opps</i>
2:00 pm	Break
2:10 pm	Business Panel: Best Practices for Contract Procurement Moderators: James Davis & Mary Jo Juarez, KEDA PTAC Program <ul style="list-style-type: none"> Melissa Anderson, COO, Art Anderson Matthew DiCrescentis, Deputy Project Manager, Kiewit-Alberici JV

KEDA SPECIAL ALERT:



kitsapeda.org

[View in browser](#)

Dept of Navy seeking info on leasing properties within 40 miles of Bremerton

[View on SAM.GOV](#)

[Download RFI](#)

Submit no later than November 24, 2023



KEDA Board of Directors



10 Months at KEDA: October 25, 2023

PHASE 1: SURVEY

PORT OF ILLAHEE



WHAT IS ONE KITSAP?

kitsapeda.me/onekitsap



Supporters



Shawn Gilfedder
Chief Executive Officer
Kitsap Credit Union

“Kitsap Credit Union is glad to serve as an anchor investor in the five-year One Kitsap Strategic Plan. We are dedicated to supporting KEDA’s mission of increasing the economic development impact and the prosperity of our communities.”



Rion Ramirez
Chief Executive Officer
Port Madison Enterprises

“We see One Kitsap as positive for our community and in line with our values. Just as the Suquamish have been and remain stewards of our ancestral lands since time immemorial, we make that commitment here going forward. Our investment in One Kitsap is an investment in this special place, its economy, and a shared desire to be part of a successful future.”



Chad Melton
President
St Michael Medical Center

“We whole-heartedly support the One Kitsap Economic Initiative. This plan addresses issues like workforce and economic capacity in a meaningful and clear way. It aligns with community needs and values and is the right plan to ensure Kitsap’s economic vitality.”



Erin Leedham
Sr. General Manager
Kitsap Mall

“One Kitsap leads us forward with a thoughtful and positive approach to Kitsap’s economic development future. The plan prioritizes the things that matter to Kitsap residents and addresses critical improvements to enhance important quality of life issues here in our beautiful county.”

KEDA'S VISION:

Economic Vitality for All—in One Spectacular Place

KEDA'S MISSION:

To facilitate healthy economic growth and investments that support livable, resilient communities, fueled by innovation and the diverse people and businesses of Kitsap.

But Wait, There's More

- Buy Close By Shop Local Campaign
- WAV-C Solution: The BIRD
- Classes: Ethics in Government Contracting, Are You Prepared to Write a Winning Proposal?, Steps Leading to a Federal Contract, Who in the Government Buys What I sell? Longshore and Harborworkers Compensation, Federal Contracting Lexicon.
- 30+ Site Visits to Local Companies
- Keyport and PSNS Industry Days, Alliance Northwest
- Local Connectivity (Example: Connecting a Local Affordable Housing Initiative to Builders and Developers)
- Partnerships on Broadband, Housing, Entrepreneurship and Innovation, Regional Economic Development, STEM Education
- Congressional Community Project Funding Assessment
- Port of Bremerton: Regular Recruitment Referrals
- PRIME Connect: Monthly opportunities to meet 2-3 prime contractors who provide presentations of work coming up in the future and potential for partnership by subcontractors