

**KITSAP PUBLIC
UTILITY DISTRICT
BROADBAND UTILITY**

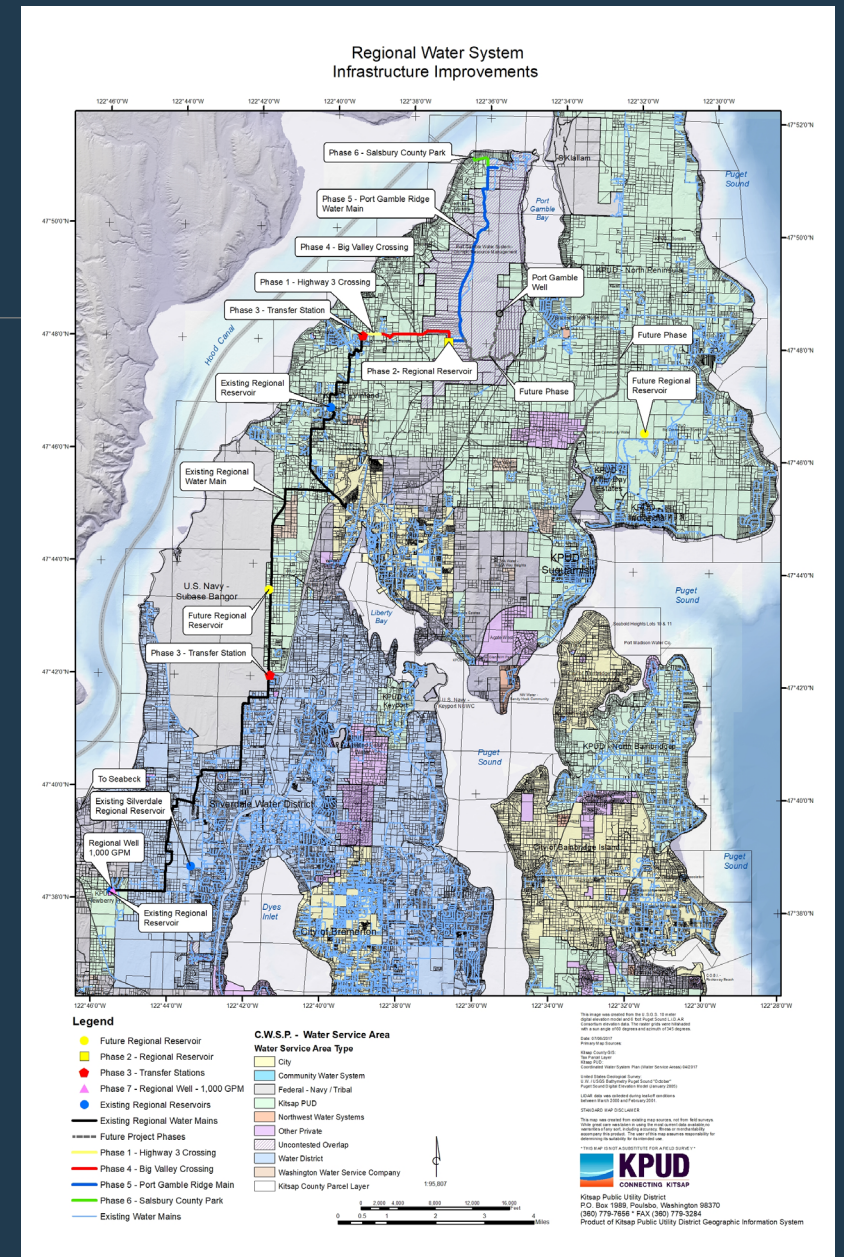
KRCC

MAY 2, 2023

Kitsap Public Utility District

STRENGTHENING KITSAP COMMUNITIES THROUGH RESPONSIVE AND SUSTAINABLE UTILITY SERVICES

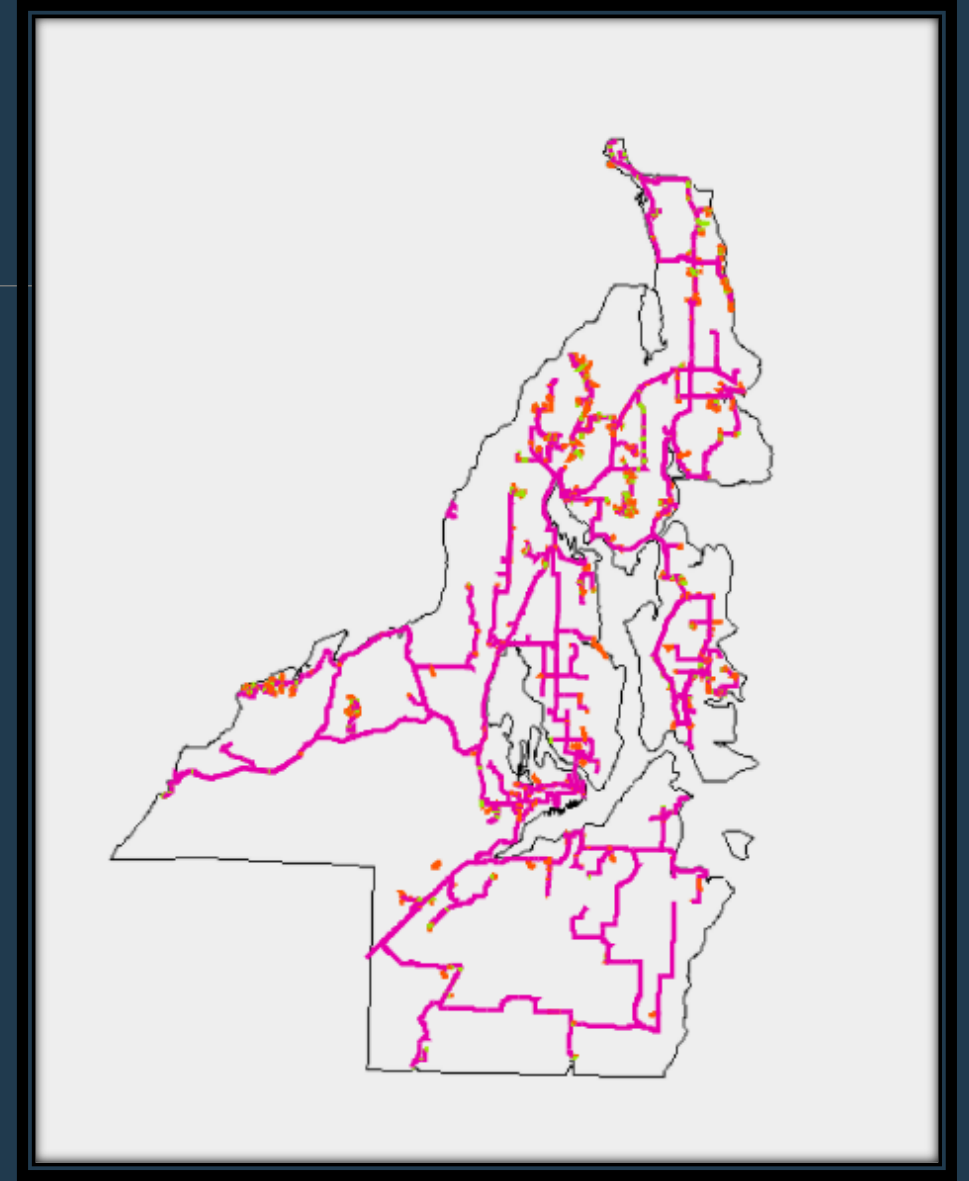
- Water Resource Management
 - All of Kitsap County
- Water Operations
 - Serving ~16,000 locations
- Wastewater Treatment Plant Port Gamble
- Broadband services
 - Business Customers – 365
 - Residential Customers - 1650



Kitsap PUD - Telecom

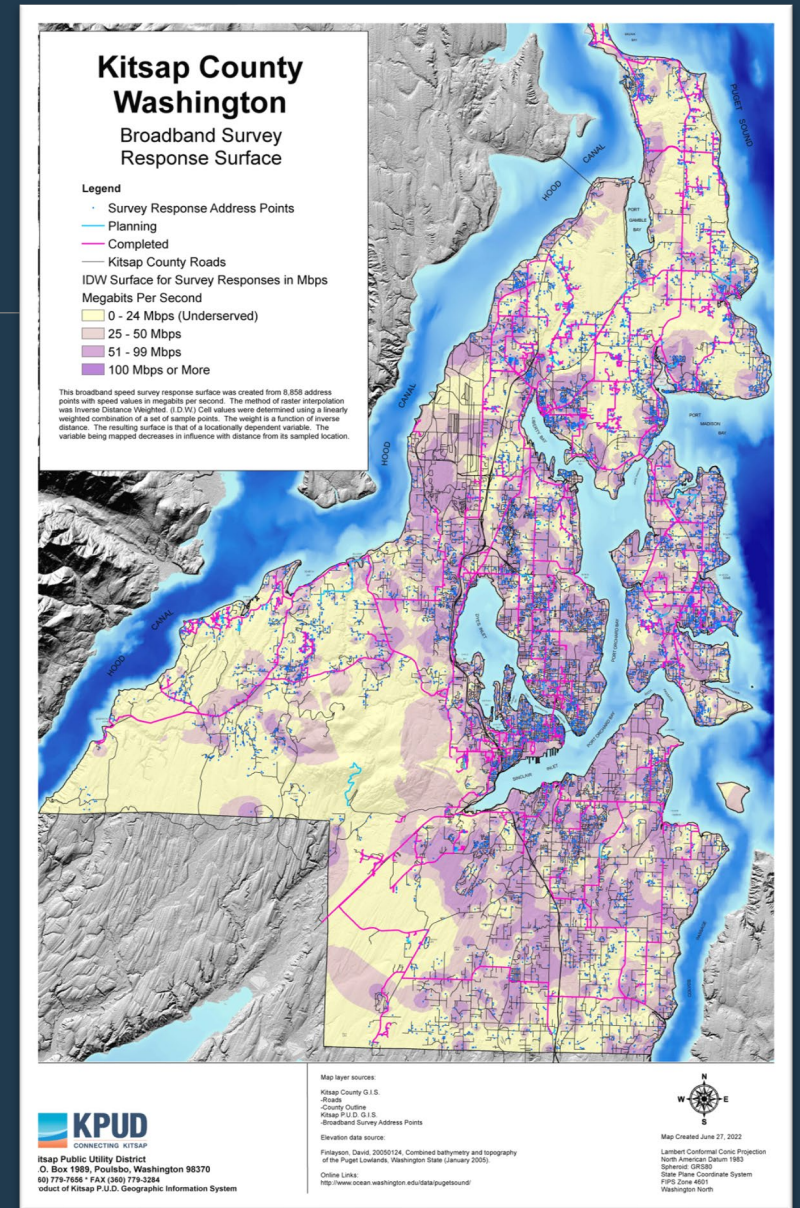
- KPUD telecom utility was created using long term bonds
 - Built a figure 8 backbone infrastructure in Kitsap County
 - Connecting Schools, Libraries and other Anchor institutions
- Carrier transport, Kitsap Naval Bases, Cell Tower backhaul, Small business customers

Committed to maintaining a community owned, high-speed, open-access, Fiber Optic Network



Residential Fiber Expansion

- 2015 Launched the COS Service Zones as a Survey tool for the county.
- 2016 Installed distribution cabinets and established the residential network – separate from the express network
 - Operate an Active Ethernet Solution
- Currently connected to 1650 Residents
- Middle Mile Expansion
 - Reach areas of unserved or underserved residents
 - Yellow areas on Heat Map








Broadband Access for Kitsap County

- High Speed and Quality Network to provide Kitsap County Residents Access to Broadband Services
- All Fiber Network
 - Provide a ‘future proof’ solution for residents in unserved or underserved areas
- KPUD is Wholesale only operating an Open Access Network
 - Multiple service providers and services to choose from
 - Competition drives better pricing and services
- All Residences are installed with equipment to provide a 1 Gbps connection
 - Upload and Download speeds are symmetrical
- Can upgrade in the future (10Gbps or higher) with an exchange of Equipment only
- As a public entity we pass the costs for construction to the end user.

KPUD Open Access Commitment

- Competition
 - Better Services and Prices
- Online marketplace
 - Kpud.broadbandportal.net
- KPUD can provide retail service, but is committed to an open-access model
 - Service Level Agreement
 - Speeds
 - Availability
 - Net Neutrality

	High Capacity 100Mbps Residential Service, Monthly 100Mbps download and upload! Lowest Latency. No data overage fees. Net253 supports net neutrality. Month to Month	Monthly cost \$64.50 Start cost \$100.00 Contract period 0 month/s Cancellation notice period 1 month/s
Read more		Search address for availability
	High Speed Internet - 100/100 No Contract! 100Mbps Up and Down. Fast, Friendly and Reliable Internet Service. High Speed Fiber Optic Connection. No data caps or over charges.	Monthly cost \$64.95 Start cost \$0.00 Contract period 0 month/s Cancellation notice period 1 month/s
Read more		Search address for availability
	Residential 100 Basic High Speed Internet - No Contract.	Monthly cost \$65.00 Start cost \$125.00 Contract period 0 month/s Cancellation notice period 0 month/s
Read more		Search address for availability
	High Speed Internet - 100/100 No Contract! With iFIBER Internet you will be on The fastest Internet in Washington. Shop, Surf and Stream like never before. Save time and money with our 100Mbps connection. No datacaps or overage charges. Pure high-speed fiber.	Monthly cost \$69.95 Start cost \$108.95 Contract period 0 month/s Cancellation notice period 0 month/s
Read more		Search address for availability
	Fiber 100/100 100Mbps residential fiber optic Internet service.	Monthly cost \$69.95 Start cost \$0.00 Contract period 0 month/s Cancellation notice period 0 month/s
Read more		Search address for availability

FCC Broadband Equity, Access and Deployment (BEAD) program

- \$42.45 Billion
 - all 50 states, Washington D.C., Puerto Rico, the U.S. Virgin Islands, Guam, American Samoa, and the Commonwealth of the Northern Mariana Islands.
- All Funding through the Washington State Broadband Office - WSBO
- New Broadband Maps determine eligible Broadband Serviceable Locations
 - Carriers Reported Service locations and available service
 - Government Agencies – Bulk Challenges on Broadband Service Locations
 - Individuals – Challenges on Location and Services
 - Carriers, Government Agencies – Bulk Challenges on Services

Check your Address....

<https://broadbandmap.fcc.gov/>



Broadband

Type Residential
Technology All Wired
Speed 100/20 Mbps or greater
Data As Of Jun 30, 2022 (Last Updated: 11/17/22)

Residential | Business

Availability Challenge

Provider	Technology	Down (Mbps)	Up (Mbps)	Chall.
▶ Comcast Corporation	Cable	1200	35	
▶ Hughes Network Systems, LLC	GSO Satellite	25	3	
▶ Lumen Technologies, Inc.	Copper	0.2	0.2	
▶ Space Exploration Holdings, LLC	NGSO Satellite	100	10	
▶ Viasat, Inc.	GSO Satellite	30	3	

What's next?

- Water
 - Regional Infrastructure
 - Consolidation
- Wastewater
 - Pilot Project – reduce contaminants in surface and ground water from septic systems
- Broadband
 - County Funded Node Project
 - Fiber-To-The-Home Project in Hintzville
 - Support all residents having access to quality and affordable broadband services.

Contacts

ourfiber@kpud.org

Jim Civilla
President Board of Commissioners
South Kitsap
jcivilla@kpud.org

Angela Bennink
General Manager
angela@kpud.org
360-626-7760

Debra Lester
Vice-President Board of Commissioners
North Kitsap
debra@kpud.org

Dave Epperson
Operations Director
depperson@kpud.org
360-516-7274

Heather Pauley
Secretary Board of Commissioners
Central Kitsap
hpauley@kpud.org